

# 2022 Jeep Wrangler Unlimited Sport Altitude 4X4 DUPONT KEVLAR,LIFT,LED'S

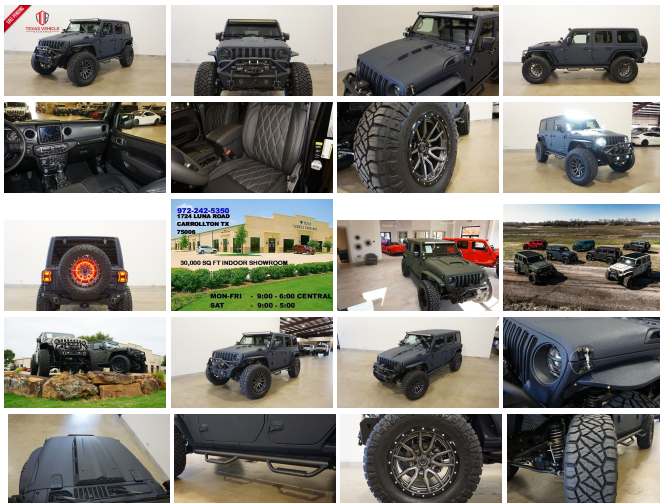
View this car on our website at [tveauto.com/7144934/ebrochure](https://tveauto.com/7144934/ebrochure)



Our Price **\$84,900**

## Specifications:

<b>Year:</b>	2022
<b>VIN:</b>	1C4HJXDG8NW271344
<b>Make:</b>	Jeep
<b>Stock:</b>	271344
<b>Model/Trim:</b>	Wrangler Unlimited Sport Altitude 4X4 DUPONT KEVLAR,LIFT,LED'S
<b>Condition:</b>	Pre-Owned
<b>Body:</b>	SUV
<b>Exterior:</b>	Blue
<b>Engine:</b>	ENGINE: 3.6L V6 24V VVT ETORQUE UPG I
<b>Interior:</b>	Black Leather
<b>Transmission:</b>	TRANSMISSION: 8-SPEED AUTOMATIC (850RE)
<b>Mileage:</b>	54
<b>Drivetrain:</b>	4 Wheel Drive
<b>Economy:</b>	City 17 / Highway 23



NATION WIDE FINANCING

SUBMIT CREDIT APP [WWW.TVEAUTO.COM](http://WWW.TVEAUTO.COM)

OR CALL 972-242-5350

**"FERRARI NART BLUE EDITION"**

CUSTOM BUILT **KEVLAR** 2022 JEEP  
WRANGLER JL UNLIMITED SPORT  
ALTITUDE 4X4 WITH 25L PACKAGE

**UPGRADES INCLUDE:**

- \* FERRARI NART BLUE KEVLAR COATING WITH ANTHRACITE ACCENTS
- \* CUSTOM ALEA BLACK LEATHER WITH SILVER STITCHING
- \* HEATED FRONT SEATS
- \* FACTORY REMOTE START
- \* REMOTE PROXIMITY KEYLESS ENTRY
- \* CONVENIENCE GROUP
- \* SAFETY GROUP
- \* FACTORY 8.4 INCH TOUCH SCREEN NAVIGATION WITH HD AM/FM/SIRIUS STEREO & ALPINE PREMIUM AUDIO SYSTEM
- \* FACTORY BACK-UP CAMERA
- \* U-CONNECT
- \* FAB FOURS STUBBY FRONT BUMPER WITH LED FOGLIGHTS
- \* FRONT D-RINGS & ISOLATORS (ANTHRACITE)
- \* SMITTYBILT NEW GEN II "X20" 10,000 LB WATERPROOF AND WIRELESS CONTROL WINCH WITH SYNTHETIC ROPE
- \* FACTOR 55 PROLINK (BLACK)
- \* FACTORY LED HEADLIGHTS
- \* RUGGED RIDGE BLACK HEADLIGHT GUARDS
- \* CUSTOM JL HEAT EXPULSION HOOD
- \* DRAKE OFF ROAD HOOD LATCHES
- \* DV8 OFF ROAD JL SLIM STEEL FENDER FLARES
- \* DV8 OFF ROAD FRONT & REAR INNER FENDERS
- \* RUBICON EXPRESS 2.5" LIFT KIT WITH TERAFLX FALCON SHOCKS
- \* TERAFLX FALCON STABILIZER KIT

- \* VOSWITCH 6 CHANNEL CUSTOM INTEGRATED SWITCH PANEL
- \* 50" LED LIGHT BAR AND 4 RIGID INDUSTRIES DUALY D2 LED PILLAR LIGHTS
- \* SMITTYBILT BLACK TUBULAR STEPS
- \* MOPAR BLACK FUEL DOOR
- \* EVOLUTION 2 BLACK LED TAIL LIGHTS
- \* RUGGED RIDGE BLACK TAIL LIGHT GUARDS
- \* RUGGED RIDGE SPARTACUS HD HINGE KIT
- \* RUGGED RIDGE LED THIRD BRAKE LIGHT RING
- \* DV8 OFF ROAD REAR BUMPER WITH REAR PARK DISTANCE SENSORS
- \* REAR D-RINGS & ISOLATORS (ANTHRACITE)
- \* ALL WEATHER FLOOR MATS
- \* TAZER JL PROGRAMMER WITH SPEEDOMETER CALIBRATION
- \* 20" FUEL ANTHRACITE "REBEL 5" WHEELS
- \* BRAND NEW NITTO RIDGE GRAPPLER 37X13.50R/20 TIRES

**WE BUILD EVERY JEEP WITH PRIDE! DO NOT HESITATE TO CALL US WITH THIS JEEP BUILD. WE CAN MAKE CHANGES TO THIS JEEP BUILD OR CUSTOM BUILD ANY JEEP TO YOUR PREFERENCE. GIVE US A CALL @ 972-242-5350 OR STOP BY FOR A TEST DRIVE. 1724 LUNA RD IN CARROLLTON - 2 MILES NORTH OF 635.**

## Our Location :



2022 Jeep Wrangler Unlimited Sport Altitude 4X4 DUPONT KEVLAR,LIFT,LED'S  
 Texas Vehicle Exchange - 972-242-5350 - View this car on our website at [veauto.com/7144934/ebrochure](http://veauto.com/7144934/ebrochure)

## Installed Options

### Interior

- 6-Way Driver Seat -inc: Manual Recline, Height Adjustment, Fore/Aft Movement and Manual Lumbar Support
- Cloth Low-Back Bucket Seats
- Front Seats w/Cloth Back Material and Manual Driver Lumbar
- Full Carpet Floor Covering -inc: Carpet Front And Rear Floor Mats
- Gauges -inc: Speedometer, Odometer, Engine Coolant Temp, Tachometer, Engine Hour Meter, Trip Odometer and Trip Computer
- Manual Air Conditioning- Proximity Key For Push Button Start Only - Trip Computer
- 2 12V DC Power Outlets- 2 Seatback Storage Pockets
- 4-Way Passenger Seat -inc: Manual Recline and Fore/Aft Movement
- 60-40 Folding Split-Bench Front Facing Fold Forward Seatback Cloth Rear Seat
- Analog Appearance- Cargo Space Lights- Carpet Floor Trim, Carpet And Rubber Mat
- Compass- Cruise Control w/Steering Wheel Controls- Day-Night Rearview Mirror
- Delayed Accessory Power- Fade-To-Off Interior Lighting- Front And Rear Map Lights
- Front Center Armrest w/Storage
- Full Floor Console w/Locking Storage and 2 12V DC Power Outlets
- HVAC -inc: Console Ducts- Illuminated Front Cupholder- Illuminated Rear Cupholder
- Instrument Panel Bin, Dashboard Storage, Driver / Passenger And Rear Door Bins
- Interior Trim -inc: Metal-Look Console Insert - Locking Cargo Area Concealed Storage
- Locking Glove Box- MOPAR Hardtop Headliner
- Manual Adjustable Front Head Restraints and Foldable Rear Head Restraints
- Manual Tilt/Telescoping Steering Column- Outside Temp Gauge
- Redundant Digital Speedometer- Sentry Key Immobilizer
- SiriusXM Guardian Tracker System- Smart Device Integration- Systems Monitor
- Urethane Gear Shifter Material- Vanity w/Driver And Passenger Auxiliary Mirror

### Exterior

- Black 3-Piece Hard Top -inc: Freedom Panel Storage Bag, Rear Window Defroster, Rear Window Wiper/Washer No Soft Top

## Option Packages

### Factory Installed Packages

#### ENGINE: 3.6L V6 24V VVT ETORQUE UPG I

- inc: 600 Amp Maintenance Free Battery, 48V Belt Starter Generator, GVWR: 5,460 lbs, Delete Alternator

#### TRANSMISSION: 8-SPEED AUTOMATIC (850RE)

- inc: Tip Start, Dana M200 Rear Axle, Selec-Speed Control \$4,000

#### 8.4" RADIO & PREMIUM AUDIO GROUP

- inc: Off-Road Info Pages, SiriusXM Traffic Plus, Alpine Premium Audio System, 220 Amp Alternator, SiriusXM Satellite Radio, SiriusXM Radio Service, HD Radio, Radio: Uconnect 4C Nav w/8.4" Display, Rear View Auto Dim Mirror, Air Conditioning w/Auto Temp Control, 1-Year SiriusXM Guardian Trial, 5-Year SiriusXM Travel Link Service, GPS Navigation, 5-Year SiriusXM Traffic Service, SiriusXM Travel Link, 4G LTE Wi-Fi Hot Spot, Emergency/Assistance Call, 8.4" Touchscreen Display, Air Filtering \$2,195

#### CONVENIENCE GROUP

- inc: Universal Garage Door Opener \$795

#### SAFETY GROUP

- inc: ParkSense Rear Park Assist System, Blind Spot & Cross Path Detection, LED Taillamps, Injection Molded Black Rear Bumper \$1,145

Window Wiper/Washer, No Soft Top

- Black Front Bumper w/2 Tow Hooks- Black Rear Bumper w/1 Tow Hook
- Front Fog Lamps- 110 MPH Vehicle Max Speed Calibration
- Aero-Composite Halogen Headlamps w/Delay-Off- Black Door Handles
- Black Fender Flares- Black Side Windows Trim- Clearcoat Paint
- Conventional Rear Cargo Access- Convertible w/Fixed Roll-Over Protection
- Deep Tint Sunscreen Windows- Full-Size Spare Tire Mounted Outside Rear
- Galvanized Steel/Aluminum/Magnesium Panels- Non-Lock Fuel Cap w/o Discriminator
- Tires: 255/70R18 All Season- Variable Intermittent Wipers
- Wheels: 18" x 7.5" Gloss Black Aluminum

## Safety

- 6-Way Driver Seat -inc: Manual Recline, Height Adjustment, Fore/Aft Movement and Manual Lumbar Support
- Cloth Low-Back Bucket Seats
- Front Seats w/Cloth Back Material and Manual Driver Lumbar
- Full Carpet Floor Covering -inc: Carpet Front And Rear Floor Mats
- Gauges -inc: Speedometer, Odometer, Engine Coolant Temp, Tachometer, Engine Hour Meter, Trip Odometer and Trip Computer
- Manual Air Conditioning- Proximity Key For Push Button Start Only - Trip Computer
- 2 12V DC Power Outlets- 2 Seatback Storage Pockets
- 4-Way Passenger Seat -inc: Manual Recline and Fore/Aft Movement
- 60-40 Folding Split-Bench Front Facing Fold Forward Seatback Cloth Rear Seat
- Analog Appearance- Cargo Space Lights- Carpet Floor Trim, Carpet And Rubber Mat
- Compass- Cruise Control w/Steering Wheel Controls- Day-Night Rearview Mirror
- Delayed Accessory Power- Fade-To-Off Interior Lighting- Front And Rear Map Lights
- Front Center Armrest w/Storage
- Full Floor Console w/Locking Storage and 2 12V DC Power Outlets
- HVAC -inc: Console Ducts- Illuminated Front Cupholder- Illuminated Rear Cupholder
- Instrument Panel Bin, Dashboard Storage, Driver / Passenger And Rear Door Bins
- Interior Trim -inc: Metal-Look Console Insert - Locking Cargo Area Concealed Storage
- Locking Glove Box- MOPAR Hardtop Headliner
- Manual Adjustable Front Head Restraints and Foldable Rear Head Restraints
- Manual Tilt/Telescoping Steering Column- Outside Temp Gauge
- Redundant Digital Speedometer- Sentry Key Immobilizer
- SiriusXM Guardian Tracker System- Smart Device Integration- Systems Monitor
- Urethane Gear Shifter Material- Vanity w/Driver And Passenger Auxiliary Mirror

## Mechanical

- 4-Wheel Disc Brakes w/4-Wheel ABS, Front Vented Discs, Brake Assist and Hill Hold Control
- Engine: 3.6L V6 24V VVT UPG I w/ESS - Transmission: 6-Speed Manual
- 1233# Maximum Payload- 180 Amp Alternator- 21.5 Gal. Fuel Tank- 3 Skid Plates
- 3.45 Rear Axle Ratio- 50 State Emissions
- 650CCA Maintenance-Free Battery w/Run Down Protection- Auto Locking Hubs
- Aux Battery- Brake Actuated Limited Slip Differential
- Electro-Hydraulic Power Assist Steering- Engine Oil Cooler
- Front And Rear Anti-Roll Bars- GVWR: 5,400 lbs- Heavy Duty Suspension w/Gas Shocks
- Leading Link Front Suspension w/Coil Springs- Manual Transfer Case
- Part-Time Four-Wheel Drive- Single Stainless Steel Exhaust
- Solid Axle Rear Suspension w/Coil Springs- Stop-Start Dual Battery System
- Towing Equipment -inc: Trailer Sway Control

## TECHNOLOGY GROUP

-inc: Air Conditioning w/Auto Temp Control, 2-Door Passive Entry, Front Door Locks, Cluster 7.0" TFT Color Display, SiriusXM Satellite Radio, SiriusXM Radio Service, Air Filtering

\$1,095

## QUICK ORDER PACKAGE 25L ALTITUDE

-inc: Engine: 3.6L V6 24V VVT eTorque UPG I, Transmission: 8-Speed Automatic (850RE), Speed Sensitive Power Locks, Freedom Panel Storage Bag, Rear Window Defroster, Rear Window Wiper/Washer, No Soft Top, Automatic Headlamps, Leather Wrapped Steering Wheel, Altitude Package, Black Trail Rated Badge, Front 1-Touch Down Power Windows, Body Color Grille w/Gloss Black Rings, Power Heated Mirrors, Black Interior Accents, Wizard Black Instrument Panel Bezels, Matte Black Jeep Badge, Security Alarm, Bridgestone Brand Tires, Remote Keyless Entry, Sun Visors w/Illuminated Vanity Mirrors

\$5,195

## Option Packages Total

\$14,425

Texas Vehicle Exchange

[tveauto.com](http://tveauto.com)

972-242-5350

1724 Luna Road

Carrollton, TX 75006

© 2024 AutoRevo - All rights reserved. - Powered by AutoRevo