

2015 Chevrolet Silverado 2500HD Utility Box 4x4 Work Truck

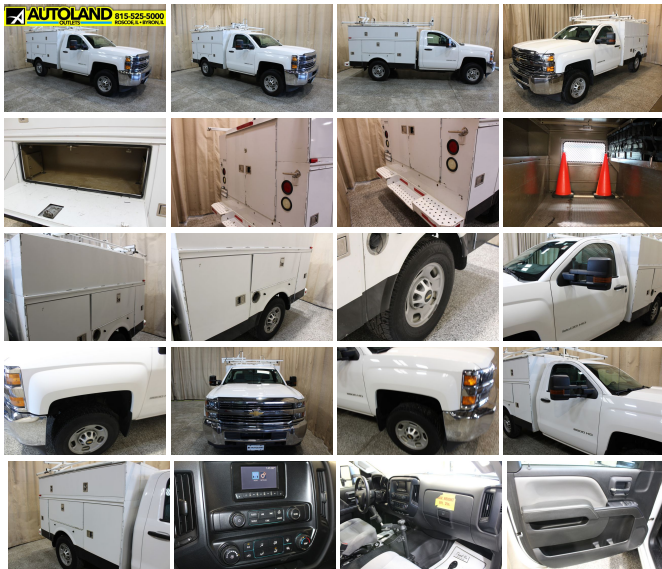
View this car on our website at autolandoutlets.com/7143167/ebrochure



Our Price **\$37,946**

Specifications:

Year:	2015
VIN:	1GB0KUEG6FZ522096
Make:	Chevrolet
Stock:	11332
Model/Trim:	Silverado 2500HD Utility Box 4x4 Work Truck
Condition:	Pre-Owned
Body:	Pickup Truck
Exterior:	Summit White
Engine:	ENGINE, VORTEC 6.0L VARIABLE VALVE TIMING V8 SFI E85-COMPATIBLE, FLEXFUEL
Interior:	Gray Cloth
Transmission:	TRANSMISSION, 6-SPEED AUTOMATIC, HEAVY-DUTY, ELECTRONICALLY CONTROLLED
Mileage:	60,098
Drivetrain:	4 Wheel Drive



Just arrived!! Vehicle has been detailed and inspected runs and drives great!! Autoland Outlets is proud to offer this 2015 Chevrolet Silverado Utility Truck 4x4. Options include 3.73 Rear Ratio, Remote Keyless entry, Camper Mirrors. Exhaust Brake the

list goes on and on call Autoland Outland at 1- 815-525-5000

Many of our trucks are Rust Free Southern Units!!! We Buy-Sell-Trade call us for Availability and Pricing 815-525-5000. Dealer Shall in no way be held liable for any errors or omissions to be found on these webpages. All prices are plus any applicable state taxes and service fees. We will do our best to keep all the information current and accurate, however the dealership should be contacted for final pricing and availability. Autoland Outlets is the midwest Premier Truck Store. Over 250 Trucks in Stock!! Over 150 are Diesels! 3/4 Tons, 1 Tons, Regular, Extended and Crew Cabs. Plus: Dump Trucks, Utility Trucks, and much more! Many New Trucks Arriving Daily!!! Thousands of Satisfied Customers! Over 25 Years in Business. Updated Daily 888-240-8674 ILLINOIS WARRANTY MAY APPLY CALL DEALERSHIP FOR DETAILS

2015 Chevrolet Silverado 2500HD Utility Box 4x4 Work Truck

Autoland Outlets - 877-319-6060 - View this car on our website at autolandoutlets.com/7143167/ebrochure

Our Location :



2015 Chevrolet Silverado 2500HD Utility Box 4x4 Work Truck

Autoland Outlets - 877-319-6060 - View this car on our website at autolandoutlets.com/7143167/ebrochure

Installed Options

Interior

- Air conditioning, single-zone- Assist handle, front passenger and driver on A-pillars

- Cruise control, steering wheel-mounted- Door locks, power
- Driver Information Center, 3.5-inch diagonal monochromatic display provides warning messages and basic vehicle information
- Floor covering, Graphite-colored rubberized-vinyl
- Instrumentation, 6-gauge cluster featuring speedometer, fuel level, engine temperature, tachometer, voltage and oil pressure
- Seat trim, Cloth
- Seats, front 40/20/40 split-bench, 3-passenger, driver and front passenger recline with outboard head restraints and center fold-down armrest with storage. Vinyl has fixed lumbar and cloth has manually adjustable driver lumbar. (Upgradeable to (AZ3) front 40/20/40 split-bench seat.)
- Steering column, manual Tilt-Wheel- Steering wheel

Exterior

- Bumper, front chrome
- Bumper, rear chrome with bumper CornerSteps (Requires (E63) pickup box.)
- CornerStep, rear bumper (Requires (E63) pickup box.)- Door handles, Black
- Glass, solar absorbing, tinted- Grille surround, chrome- Headlamps, halogen projector
- Lamps, cargo area, cab mounted with switch on center switch bank
- Mirrors, outside manual, Black- Tailgate and bed rail protection caps, top
- Tailgate, locking, utilizes same key as ignition and door (Deleted with (ZW9) pickup box delete.)
- Tire carrier lock keyed cylinder lock that utilizes same key as ignition and door (Not included when (ZW9) pickup box delete or (9J4) rear bumper delete is ordered.)
- Tires, LT245/75R17E all-season, blackwall
- Wheels, 17" (43.2 cm) steel includes 17" x 7.5" (43.2 cm x 19.1 cm) steel spare wheel. Spare not included with (ZW9) pickup box delete unless a spare tire is ordered.

Safety

- Air conditioning, single-zone- Assist handle, front passenger and driver on A-pillars
- Cruise control, steering wheel-mounted- Door locks, power
- Driver Information Center, 3.5-inch diagonal monochromatic display provides warning messages and basic vehicle information
- Floor covering, Graphite-colored rubberized-vinyl
- Instrumentation, 6-gauge cluster featuring speedometer, fuel level, engine temperature, tachometer, voltage and oil pressure
- Seat trim, Cloth
- Seats, front 40/20/40 split-bench, 3-passenger, driver and front passenger recline with outboard head restraints and center fold-down armrest with storage. Vinyl has fixed lumbar and cloth has manually adjustable driver lumbar. (Upgradeable to (AZ3) front 40/20/40 split-bench seat.)
- Steering column, manual Tilt-Wheel- Steering wheel

Mechanical

- Air cleaner, high-capacity- Alternator, 150 amps
- Battery, heavy-duty 720 cold-cranking amps/80 Amp-hr, maintenance-free with rundown protection and retained accessory power
- Brakes, 4-wheel antilock, 4-wheel disc with DuraLife brake rotors
- Cooling, auxiliary external transmission oil cooler- Cooling, external engine oil cooler
- Differential, heavy-duty locking rear
- Engine, Vortec 6.0L Variable Valve Timing V8 SFI E85-compatible, FlexFuel capable of running on unleaded or up to 85% ethanol (360 hp [268.4 kW] @ 5400 rpm, 380 lb-ft of torque [515.0 N-m] @ 4200 rpm) with (E63) fleetside pickup box; (322 hp [240.1 kW] @ 4400 rpm, 380 lb-ft of torque [515.0 N-m] @ 4200 rpm) with (ZW9) pickup box delete (Does not include E85 capability with (ZW9) pickup box delete.)
- Exhaust, aluminized stainless-steel muffler and tailpipe- Four wheel drive
- Frame, fully-boxed, hydroformed front section
- GVWR, 9500 lbs. (4309 kg) (Requires (L96) Vortec 6.0L V8 SFI engine or (LC8) 6.0L V8 SFI Gaseous engine and 4WD model.)
- Pickup box, Wideside
- Rear axle, 4.10 ratio (Requires (L96) Vortec 6.0L V8 SFI engine or (LC8) 6.0L V8 SFI Gaseous CNG (Compressed Natural Gas) engine.)
- Recovery hooks, front, frame-mounted, black- Steering, Recirculating Ball
- Suspension Package, Standard includes 51mm twin tube shock absorbers and 33mm front stabilizer bar
- Transfer case, with floor-mounted shifter (Included with 4WD models only.)
- Transmission, 6-speed automatic, heavy-duty, electronically controlled with overdrive and tow/haul mode. Includes Cruise Grade Braking and Powertrain Grade Braking (Requires (L96) Vortec 6.0L V8 SFI engine or (LC8) 6.0L V8 SFI Gaseous engine.)

Option Packages

Factory Installed Packages

Packages

ENGINE, VORTEC 6.0L VARIABLE VALVE TIMING V8 SFI E85-COMPATIBLE, FLEXFUEL

capable of running on unleaded or up to 85% ethanol (360 hp [268.4 kW] @ 5400 rpm, 380 lb-ft of torque [515.0 N-m] @ 4200 rpm) with (E63) fleetside pickup box; (322 hp [240.1 kW] @ 4400 rpm, 380 lb-ft of torque [515.0 N-m] @ 4200 rpm) with (ZW9) pickup box delete

TRANSMISSION, 6-SPEED AUTOMATIC, HEAVY-DUTY, ELECTRONICALLY CONTROLLED

with overdrive and tow/haul mode. Includes Cruise Grade Braking and Powertrain Grade Braking

ENGINE BLOCK HEATER
\$90

EXHAUST BRAKE

MIRROR, INSIDE REARVIEW AUTO-DIMMING

MIRRORS, OUTSIDE HEATED POWER-ADJUSTABLE VERTICAL CAMPER UPPER GLASS, MANUAL-FOLDING AND EXTENDING, BLACK.

\$350

REMOTE KEYLESS ENTRY

UNDERBODY SHIELD, FRAME-MOUNTED SHIELDS

includes front underbody shield starting behind front bumper and running to first cross-member, protecting front underbody, oil pan, differential case and transfer case

\$150

WT FLEET CONVENIENCE PACKAGE

includes (DL8) outside heated power-adjustable mirrors and (AQQ) Remote Keyless Entry

\$610

REAR AXLE, 3.73 RATIO

\$100

PICKUP BOX, DELETE

includes (9J4) rear bumper delete, spare tire delete and spare tire carrier delete.

-\$675

GVWR, 9500 LBS. (4309 KG)

SUMMIT WHITE PAINT, SOLID

WORK TRUCK PREFERRED EQUIPMENT GROUP

includes standard equipment

-
AUDIO SYSTEM, 4.2" DIAGONAL COLOR
DISPLAY, AM/FM STEREO WITH USB
PORTS

auxiliary jack and SD card slot

-
DARK ASH WITH JET BLACK INTERIOR
ACCENTS, CLOTH SEAT TRIM

-
SEATS, FRONT 40/20/40 SPLIT-BENCH,
3-PASSENGER, DRIVER AND FRONT
PASSENGER RECLINE

with outboard head restraints and
center fold-down armrest with
storage. Vinyl has fixed lumbar
and cloth has manually
adjustable driver lumbar.

-
TIRE, SPARE LT265/70R17E ALL-
TERRAIN, BLACKWALL

\$380

-
SUSPENSION PACKAGE, STANDARD

includes 51mm twin tube shock
absorbers and 33mm front
stabilizer bar

-
TIRES, LT265/70R17E ALL-TERRAIN,
BLACKWALL

\$200

-
Option Packages Total

\$1,205

Autoland Outlets

autolandoutlets.com

877-319-6060

13156 Love Rd

Roscoe, IL 61073

© 2023 AutoRevo - All rights reserved. - Powered by AutoRevo