

2022 Ford Super Duty F-250 Pickup XL

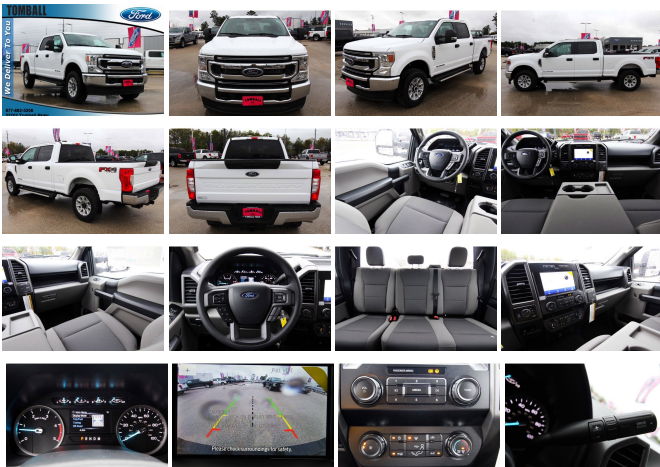
View this car on our website at askjorgelopez.com/7141003/ebrochure



Our Price **\$65,965**

Specifications:

Year:	2022
VIN:	1FT7W2BT4NEG32445
Make:	Ford
Stock:	EG32445
Model/Trim:	Super Duty F-250 Pickup XL
Condition:	New
Body:	Pickup Truck
Exterior:	OXFORD WHITE
Engine:	ENGINE: 6.7L 4V OHV POWER STROKE V8 TURBO DIESEL B20
Interior:	Gray
Mileage:	4
Drivetrain:	4 Wheel Drive

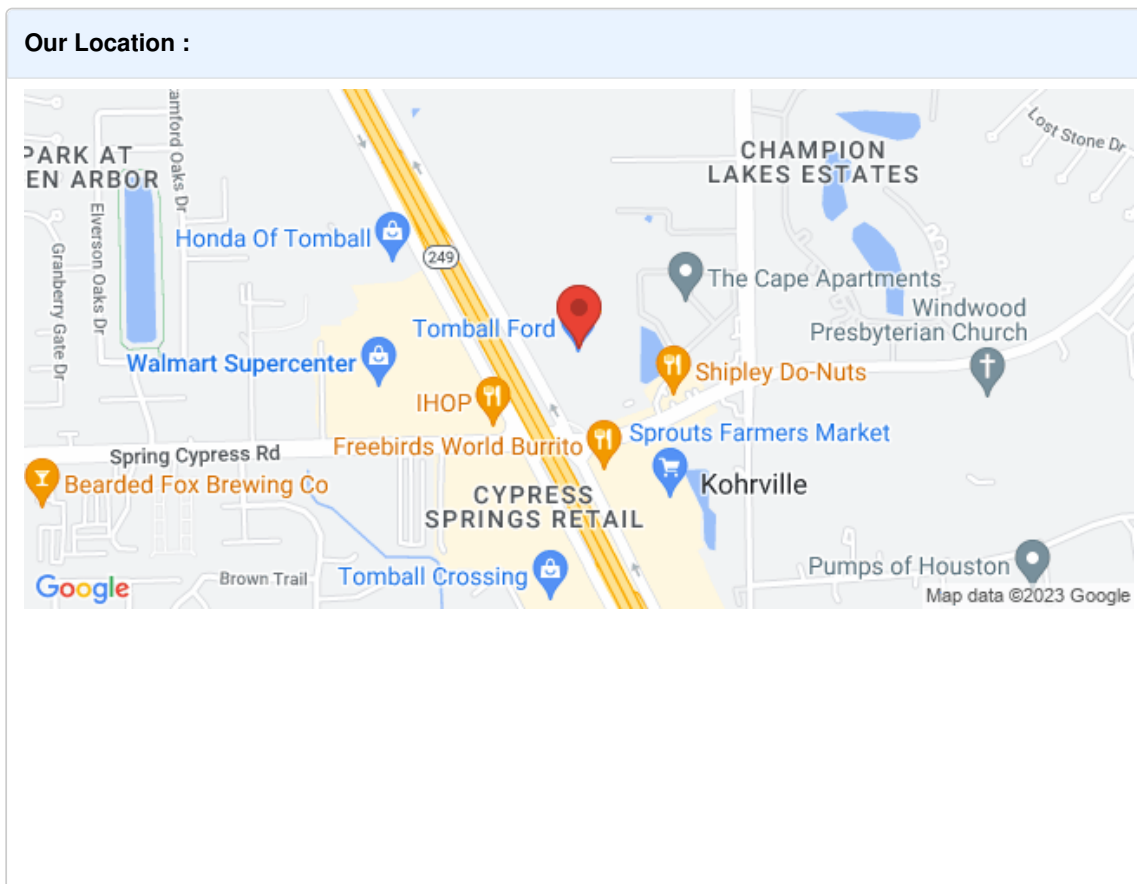


"This vehicle exudes quality! You can't go wrong with this reliable 2022 Ford Super Duty F-250 SRW. Tire Specific Low Tire Pressure Warning, Side Impact Beams, Safety Canopy System Curtain 1st And 2nd Row Airbags, Outboard Front Lap And Shoulder Safety Belts -inc: Rear Center 3 Point and Height Adjusters, Mykey System -inc: Top Speed Limiter, Audio Volume Limiter, Early Low Fuel Warning, Programmable Sound Chimes and Beltminder w/Audio Mute.*Fully-Loaded with Additional Options*STX APPEARANCE PACKAGE -inc: STX fender vent badge, Bright Chrome Hub Covers & Center Ornaments, Chrome Front Bumper, Chrome Rear Step Bumper, Steering Wheel-Mounted Cruise Control, Tires: LT275/65Rx18E BSW A/S, Spare may not be the same as road tire, Wheels: 18" Sparkle Silver Painted Cast Aluminum, bright hub covers/center ornaments, Bright Chrome Grille, SIRIUSXM RADIO -inc: a 3-month prepaid subscription and 1 I/P mounted center speaker, Service is not available in Alaska and Hawaii, SiriusXM audio and data services each require a subscription sold separately, or as a package, by SiriusXM Radio Inc, If you decide to continue service after your trial, the subscription plan you choose will automatically renew thereafter and you will be charged according to your chosen payment method at then-current rates, Fees and taxes apply, To cancel you must call SiriusXM at 1-866-635-2349, See SiriusXM Customer Agreement for complete terms at www.siriusxm.com, All fees and programming subject to change, SiriusXM and all related marks and logos are trademarks of SiriusXM Radio Inc, FX4 OFF-ROAD PACKAGE -inc: Hill Descent Control, Off-Road Specifically Tuned Shock Absorbers, front/rear, Transfer Case & Fuel Tank Skid Plates, Unique FX4 Off-Road Box Decal, TIRES: LT275/70RX18E BSW A/T (4) -inc: Spare may not be the same as road tire, SYNC 3 COMMUNICATIONS & ENTERTAINMENT SYSTEM -inc: enhanced voice recognition, 8" LCD capacitive touch screen in center stack w/swipe capability, pinch-to-zoom capability included w/available voice-activated touchscreen navigation system, 4.2" productivity screen in IP cluster, AppLink, 911

Assist, Apple CarPlay and Android Auto capability and 2 smart charging USB-C ports, 110V/400W Outlet, 1 in-dash mounted outlet, STX APPEARANCE PACKAGE -inc: STX fender vent badge, Bright Chrome Hub Covers & Center Ornaments, Chrome Front Bumper, Chrome Rear Step Bumper, Steering Wheel-Mounted Cruise Control, Tires: LT275/65Rx18E BSW A/S, Spare may not be the same as road tire, Wheels: 18" Sparkle Silver Painted Cast Aluminum, bright hub covers/center ornaments, Bright Chrome Grille, SPARE TIRE, WHEEL, CARRIER & JACK, SIRIUSXM RADIO -inc: a 3-month prepaid subscription and 1 I/P mounted center speaker, Service is not available in Alaska and Hawaii, SiriusXM audio and data services each require a subscription sold separately, or as a package, by SiriusXM Radio Inc, If you decide to continue service after your trial, the subscription plan you choose will automatically renew thereafter and you will be charged according to your chosen payment method at then-current rates, Fees and taxes apply, To cancel you must call SiriusXM at 1-866-635-2349, See SiriusXM Customer Agreement for complete terms at www.siriusxm.com, All fees and programming subject to change, SiriusXM and all related marks and logos are trademarks of SiriusXM Radio Inc, PRIVACY GLASS, POWER EQUIPMENT GROUP -inc: Deletes passenger-side lock cylinder, upgraded door trim panel, Accessory Delay, Advanced Security Pack, SecuriLock Passive Anti-Theft System (PATS) and inclination/intrusion sensors, Power Locks, Remote Keyless Entry, Trailer Tow Mirrors w/Power Heated Glass, manual folding, manually telescoping, heated convex spotter mirror and integrated clearance lamps and turn signals, Power Front & Rear Seat Windows, 1-touch up/down driver/passenger window, Power Tailgate Lock.* Stop By Today *A short visit to Tomball Ford located at 22702 Tomball Parkway, Tomball, TX 77375 can get you a reliable Super Duty F-250 SRW today!"

2022 Ford Super Duty F-250 Pickup XL

Ask Jorge Lopez - (866) 773-1396 - View this car on our website at askjorgelopez.com/7141003/ebrochure



2022 Ford Super Duty F-250 Pickup XL

Ask Jorge Lopez - (866) 773-1396 - View this car on our website at askjorgelopez.com/7141003/ebrochure

Installed Options

Interior

- 4-Way Driver Seat -inc: Manual Recline and Fore/Aft Movement
- 4-Way Passenger Seat -inc: Manual Recline and Fore/Aft Movement
- 60-40 Folding Split-Bench Front Facing Fold-Up Cushion Rear Seat
- Manual Tilt/Telescoping Steering Column
- Gauges -inc: Speedometer, Odometer, Oil Pressure, Engine Coolant Temp, Tachometer, Transmission Fluid Temp, Engine Hour Meter, Trip Odometer and Trip Computer
- Manual Rear Windows- FordPass Connect 4G Mobile Hotspot Internet Access
- Rear Cupholder- Manual Air Conditioning- HVAC -inc: Underseat Ducts
- Illuminated Locking Glove Box- Interior Trim -inc: Chrome Interior Accents
- Full Cloth Headliner- Urethane Gear Shifter Material
- HD Vinyl 40/20/40 Split Bench Seat -inc: center armrest, cupholder, storage and driver's side manual lumbar
- Day-Night Rearview Mirror- Passenger Visor Vanity Mirror- 2 12V DC Power Outlets
- Full Overhead Console w/Storage and 2 12V DC Power Outlets
- Fade-To-Off Interior Lighting- Front And Rear Map Lights
- Full Vinyl/Rubber Floor Covering- Pickup Cargo Box Lights
- Smart Device Remote Engine Start
- Instrument Panel Covered Bin and Dashboard Storage- Manual 1st Row Windows
- Systems Monitor- Trip Computer- Outside Temp Gauge- Analog Appearance
- Seats w/Vinyl Back Material
- Manual Adjustable Front Head Restraints and Manual Adjustable Rear Head Restraints
- Securilock Anti-Theft Ignition (pats) Immobilizer- Air Filtration

Exterior

- Wheels: 17" Argent Painted Steel -inc: painted hub covers/center ornaments
- Tires: LT245/75R17E BSW A/S (4) -inc: Spare may not be the same as road tire
- Regular Box Style- Steel Spare Wheel- Spare Tire Stored Underbody w/Crankdown
- Clearcoat Paint- Black Front Bumper w/Black Rub Strip/Fascia Accent and 2 Tow Hooks
- Black Rear Step Bumper- Black Side Windows Trim and Black Front Windshield Trim
- Black Door Handles- Black Manual Side Mirrors w/Manual Folding
- Manual Extendable Trailer Style Mirrors- Fixed Rear Window- Light Tinted Glass
- Variable Intermittent Wipers- Aluminum Panels- Black Grille
- Tailgate Rear Cargo Access- Manual Tailgate/Rear Door Lock
- Autolamp Auto On/Off Aero-Composite Halogen Daytime Running Lights Preference Setting Headlamps w/Delay-Off
- Cargo Lamp w/High Mount Stop Light

Safety

- 4-Way Driver Seat -inc: Manual Recline and Fore/Aft Movement
- 4-Way Passenger Seat -inc: Manual Recline and Fore/Aft Movement
- 60-40 Folding Split-Bench Front Facing Fold-Up Cushion Rear Seat
- Manual Tilt/Telescoping Steering Column
- Gauges -inc: Speedometer, Odometer, Oil Pressure, Engine Coolant Temp, Tachometer, Transmission Fluid Temp, Engine Hour Meter, Trip Odometer and Trip Computer
- Manual Rear Windows- FordPass Connect 4G Mobile Hotspot Internet Access
- Rear Cupholder- Manual Air Conditioning- HVAC -inc: Underseat Ducts
- Illuminated Locking Glove Box- Interior Trim -inc: Chrome Interior Accents
- Full Cloth Headliner- Urethane Gear Shifter Material
- HD Vinyl 40/20/40 Split Bench Seat -inc: center armrest, cupholder, storage and driver's side manual lumbar
- Day-Night Rearview Mirror- Passenger Visor Vanity Mirror- 2 12V DC Power Outlets
- Full Overhead Console w/Storage and 2 12V DC Power Outlets
- Fade-To-Off Interior Lighting- Front And Rear Map Lights
- Full Vinyl/Rubber Floor Covering- Pickup Cargo Box Lights
- Smart Device Remote Engine Start
- Instrument Panel Covered Bin and Dashboard Storage- Manual 1st Row Windows
- Systems Monitor- Trip Computer- Outside Temp Gauge- Analog Appearance
- Seats w/Vinyl Back Material
- Manual Adjustable Front Head Restraints and Manual Adjustable Rear Head Restraints
- Securilock Anti-Theft Ignition (pats) Immobilizer- Air Filtration

Mechanical

- Engine: 6.2L 2-Valve SOHC EFI NA V8 Flex-Fuel
- Transmission: TorqShift-G 6-Spd Auto w/SelectShift- 3.73 Axle Ratio
- GVWR: 10,000 lb Payload Package- 50-State Emissions System

- Transmission w/Oil Cooler- Electronic Transfer Case- Part-Time Four-Wheel Drive
- 72-Amp/Hr 650CCA Maintenance-Free Battery w/Run Down Protection
- 157 Amp Alternator- Class V Towing Equipment -inc: Hitch and Trailer Sway Control
- Trailer Wiring Harness- 3470# Maximum Payload- HD Shock Absorbers
- Front Anti-Roll Bar- Firm Suspension- Hydraulic Power-Assist Steering
- 34 Gal. Fuel Tank- Single Stainless Steel Exhaust- Auto Locking Hubs
- Front Suspension w/Coil Springs- Solid Axle Rear Suspension w/Leaf Springs
- 4-Wheel Disc Brakes w/4-Wheel ABS, Front And Rear Vented Discs, Brake Assist and Hill Hold Control

Option Packages

Factory Installed Packages

ENGINE: 6.7L 4V OHV POWER STROKE

V8 TURBO DIESEL B20

-inc: manual push-button engine-exhaust braking and intelligent oil-life monitor, 175 Amp Heavy Duty Alternator, 34 Gallon Fuel Tank, 3.31 Axle Ratio, Dual 78-AH 750 CCA Batteries

\$10,495

Option Packages Total

\$10,495

Ask Jorge Lopez

askjorgelopez.com

(866) 773-1396

22702 Tomball Parkway

Tomball, TX 77375

© 2023 AutoRevo - All rights reserved. - Powered by AutoRevo