

**paniaguaautos.com**  
**(706)529-1919**



## 2016 Chevrolet Cruze LS

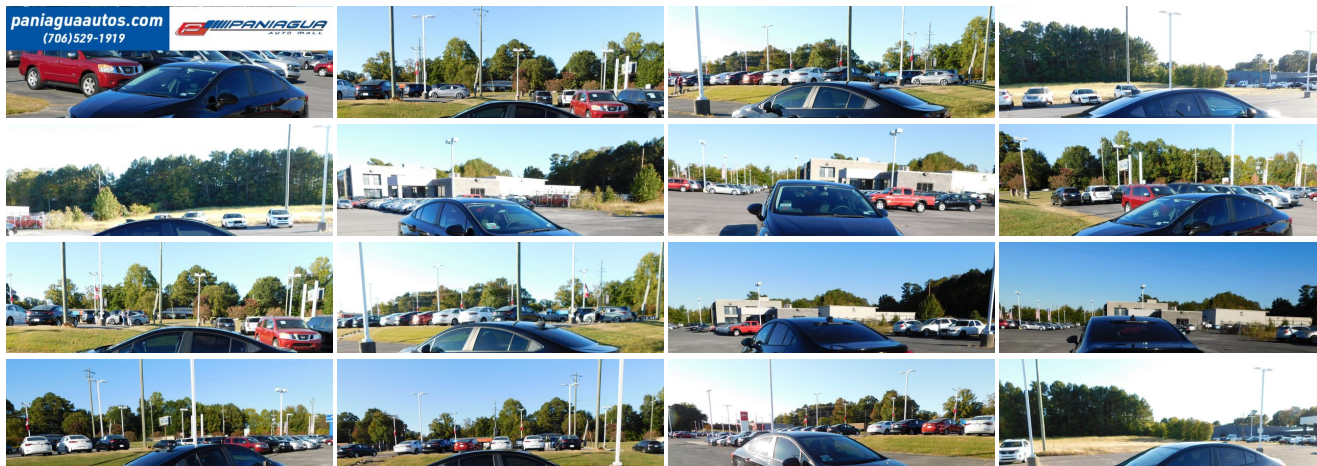
**Our Price \$6,995**

View this vehicle on our website at [paniaguaautos.com](http://paniaguaautos.com)



706-529-1919 & 423-472-4045  
1776 E. Walnut Ave, Dalton, GA 30721

Photos  
Details  
Contact





## Specifications:

<b>Year:</b>	2016
<b>VIN:</b>	<a href="#">1G1BC5SM0G7265962</a>
<b>Make:</b>	Chevrolet
<b>Stock:</b>	9161
<b>Model/Trim:</b>	Cruze LS
<b>Condition:</b>	Pre-Owned
<b>Body:</b>	Sedan
<b>Exterior:</b>	Black
<b>Engine:</b>	ENGINE, 1.4L TURBO DOHC 4-CYLINDER DI
<b>Interior:</b>	Black Cloth
<b>Transmission:</b>	AUTOMATIC
<b>Mileage:</b>	237,953
<b>Drivetrain:</b>	Front Wheel Drive
<b>Economy:</b>	City 30 / Highway 42

## Vehicle Description

2016 CHEVROLET CRUZE LS 1.4L 4 CYLINDER AUTOMATIC CLOTH INTERIOR ALL POWER HURRY IN TODAY AND CHECK OUT OUR MOST RECENT INVENTORY

## Installed Options

### Interior

- Door locks, power- Floor mats, carpeted front and rear- Remote Keyless Entry
- Remote panic alarm- Seat trim, cloth
- Seats, front bucket with reclining seatbacks and adjustable head restraints
- Theft-deterrent system, unauthorized entry- Tire Pressure Display
- Air conditioning, single-zone electronic includes air filter- Console, floor, with armrest
- Defogger, rear-window, electric- Driver Information Center, monochromatic display
- Engine immobilizer, theft-deterrent system- Head restraints, 2-way adjustable, front
- Instrumentation, analog with mph speedometer
- Key, primary foldable, additional foldable- Lighting, interior, overhead courtesy lamp
- Lighting, interior, roof, rear courtesy- Lighting, interior, trunk compartment
- Mirror, inside rearview manual day/night- Oil life monitoring system
- Rear air ducts, floor mounted- Seat adjuster, driver 6-way manual
- Seat adjuster, front passenger 2-way manual- Seat, rear, folding
- Sensor, cabin humidity- Steering column, manual tilt and telescopic
- Steering wheel, 3-spoke, deluxe- Trunk release, power, remote
- Visors, driver and front passenger vanity mirrors
- Warning tones, driver and front passenger safety belts
- Windows, power with driver and front passenger Express-Down

### Exterior

- Wheels, 15" (38.1 cm) steel with full bolt-on wheel covers- Door handles, body-color
- Glass, solar absorbing- Headlamps, halogen with automatic on/off and delay
- Mirrors, outside power-adjustable, manual-folding- Moldings, Black beltline
- Tire sealant and inflator kit- Tire, spare, none- Tires, 195/65R15 all-season, blackwall
- Wheel, spare, none- Windshield, solar absorbing- Wipers, front intermittent, variable

### Safety

- Door locks, power- Floor mats, carpeted front and rear- Remote Keyless Entry
- Remote panic alarm- Seat trim, cloth
- Seats, front bucket with reclining seatbacks and adjustable head restraints
- Theft-deterrent system, unauthorized entry- Tire Pressure Display
- Air conditioning, single-zone electronic includes air filter- Console, floor, with armrest
- Defogger, rear-window, electric- Driver Information Center, monochromatic display
- Engine immobilizer, theft-deterrent system- Head restraints, 2-way adjustable, front
- Instrumentation, analog with mph speedometer
- Key, primary foldable, additional foldable- Lighting, interior, overhead courtesy lamp
- Lighting, interior, roof, rear courtesy- Lighting, interior, trunk compartment
- Mirror, inside rearview manual day/night- Oil life monitoring system
- Rear air ducts, floor mounted- Seat adjuster, driver 6-way manual
- Seat adjuster, front passenger 2-way manual- Seat, rear, folding
- Sensor, cabin humidity- Steering column, manual tilt and telescopic
- Steering wheel, 3-spoke, deluxe- Trunk release, power, remote
- Visors, driver and front passenger vanity mirrors
- Warning tones, driver and front passenger safety belts
- Windows, power with driver and front passenger Express-Down

### Mechanical

- Transmission, 6-speed automatic- Alternator, 130 amps- Axle, 3.14 ratio
- Battery, 80AH- Brake lining, high-performance, noise and dust performance
- Brake, parking, foot apply
- Brakes, 4-wheel disc, 4-wheel antilock with Duralife brake rotors
- Coolant protection, engine- Engine control, stop-start system
- Engine, 1.4L turbo DOHC 4-cylinder DI with Continuous Variable Valve Timing (CVVT)  
(153 hp [114.08 kW] @ 5600 rpm, 177 lb-ft of torque [239 N-m] @ 2000-4000 rpm)
- Front wheel drive- Steering, power, electric rack-mounted
- Suspension, front MacPherson strut- Suspension, rear, compound crank

## Option Packages

### Factory Installed Packages

---

ENGINE, 1.4L TURBO DOHC 4-CYLINDER DI  
with Continuous Variable Valve Timing (CVVT)  
(153 hp [114.08 kW] @ 5600 rpm, 177 lb-ft of  
torque [239 N-m] @ 2000-4000 rpm)

We sale used vehicles as is no warranty. We sale extended warranties ask one of our sales rep. for details.

Paniagua Auto Mall

Paniagua Auto Mall

View this car on our website at [paniaguaautos.com/7139655](http://paniaguaautos.com/7139655)

Website: [paniaguaautos.com](http://paniaguaautos.com)

Phone: 706-529-1919& 423-472-4045

Map: 1776 E. Walnut Ave , Dalton, GA 30721

