

paniaguaautos.com
(706)529-1919



2004 Volkswagen Passat GLX

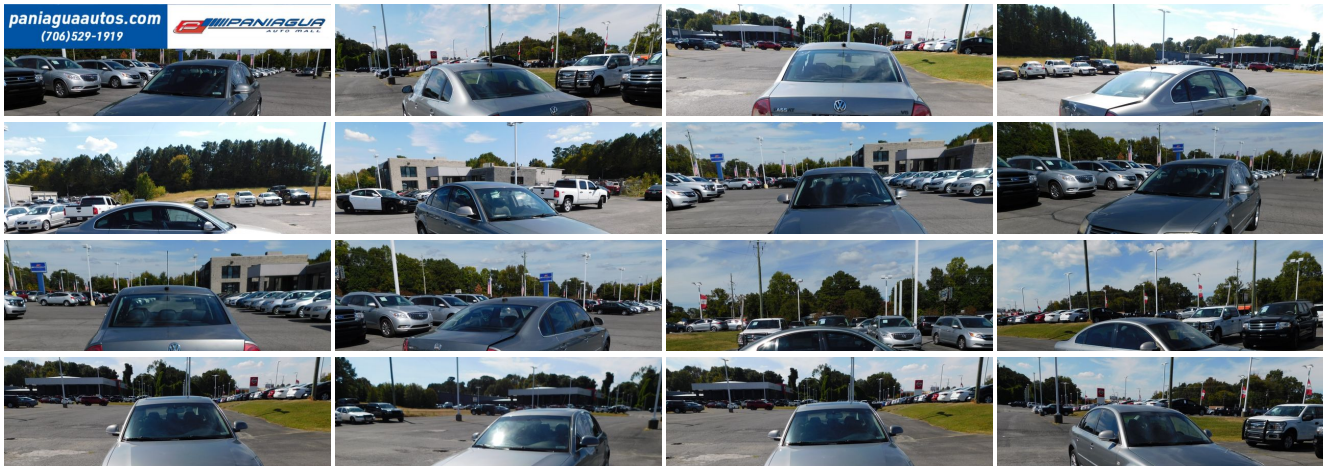
Our Price \$1,995

View this vehicle on our website at paniaguaautos.com



706-529-1919 & 423-472-4045
1776 E. Walnut Ave, Dalton, GA 30721

Photos
Details
Contact





Specifications:

Year:	2004
VIN:	WVWRH63B34P095215
Make:	Volkswagen
Stock:	9218
Model/Trim:	Passat GLX
Condition:	Pre-Owned
Body:	Sedan
Exterior:	Gray
Engine:	2.8L DOHC SMPI 30-valve V6 engine
Interior:	Black Leather
Transmission:	AUTOMATIC
Mileage:	161,237
Drivetrain:	Front Wheel Drive
Economy:	City 19 / Highway 27

Vehicle Description

2004 VOLKSWAGEN PASSAT 2.8L V6 AUTOMATIC LEATHER INTERIOR ALL POWER SOME COSMETIC ISSUES IT WILL NEED SOME WORK (MECHANIC SPECIAL)

Installed Options

Interior

- Central pwr locking system-inc: automatic door locks, key-operated window open/close, selective unlocking at driver door, key-operated closing for pwr sunroof
- Cruise control
- Fully reclining 8-way pwr leather heated front bucket seats w/driver-side 3-position memory, adjustable headrests, lumbar support
- Leather-wrapped 4-spoke tilt padded steering wheel w/height-adjustable/ telescopic steering column, cruise/audio controls
- Premium V AM/FM stereo w/cassette/CD player-inc: (8) speakers, Monsoon sound system
- Pwr windows-inc: driver-side 1-touch up/down & lockout features, pinch protection
- (2) front/(2) rear reading lights
- (3) pwr outlets-inc: (1) in front center console, (1) in rear center console, (1) in cargo area
- (4) trunk tie-down hooks
- 6-disc CD changer preparation-inc: wiring harness, mounting shelf in trunk
- 60/40 split folding rear seat-inc: adjustable headrests, fold-flat feature, folding center armrest w/storage compartment, cup holders
- Audible/visible anti-theft vehicle alarm system-inc: doors, hood, trunk, radio, starter
- Center console-inc: (2) cup holders - Chrome loading edge protection
- Dual illuminated visor vanity mirrors w/covers
- Electronic climate control air conditioning w/pollen/dust filters
- Front center dome light w/time delay- Front door storage pockets w/rubber liners
- Front seatback storage pockets- Front/rear floor mats
- Front/rear passenger assist handles- Fully carpet-lined luggage compartment w/light
- Genuine walnut wood interior trim- Headlights-on warning tone- Homelink
- Illuminated lockable glove box w/adjustable cooling feature
- Immobilizer III theft-deterrent system
- Instrumentation-inc: speedometer, odometer, trip odometer, tachometer, fuel/ temp gauges, gear indicator, warning lights, digital clock
- Integrated armrests in door panels- Interior ambient lights- Leather hand brake grip
- Manual rear side sunshade- Mirror control pad w/joystick control
- Molded door trim in leatherette
- Multi-function trip computer-inc: trip time/length, average speed/fuel consumption, outside temp

- OnStar Telematics Pwr remote trunk/fuel door releases located on drivers door
- Rear heating/air conditioning ducts- Rear window defroster
- Seat belt reminder & fuel cap seal warning- Self-dimming rearview mirror w/switch
- Slidable folding front center armrest w/storage compartment- Sun visor extension
- Valet key- Wood shift knob

Exterior

- Daytime running lights- Black grille w/center logo- Body-color body-side moldings
- Body-color bumpers w/black lower section- Body-color door handles
- Body-color pwr folding heated side mirrors w/memory, auto tilt-down in reversing, integrated turn signals
- Bumper-integrated front fog lamps- Gray-tinted upper windshield stripe
- Heated front windshield washer nozzles
- Pwr tilt/slide sunroof-inc: tinted glass, sunshade, pinch protection, driver door pwr convenient closing
- Rain sensing/speed-sensitive 2-speed aero windshield wipers w/4-speed adjustable intermittent wipe feature
- Tinted green glass

Safety

- Central pwr locking system-inc: automatic door locks, key-operated window open/close, selective unlocking at driver door, key-operated closing for pwr sunroof
- Cruise control
- Fully reclining 8-way pwr leather heated front bucket seats w/driver-side 3-position memory, adjustable headrests, lumbar support
- Leather-wrapped 4-spoke tilt padded steering wheel w/height-adjustable/ telescopic steering column, cruise/audio controls
- Premium V AM/FM stereo w/cassette/CD player-inc: (8) speakers, Monsoon sound system
- Pwr windows-inc: driver-side 1-touch up/down & lockout features, pinch protection
- (2) front/(2) rear reading lights
- (3) pwr outlets-inc: (1) in front center console, (1) in rear center console, (1) in cargo area
- (4) trunk tie-down hooks
- 6-disc CD changer preparation-inc: wiring harness, mounting shelf in trunk
- 60/40 split folding rear seat-inc: adjustable headrests, fold-flat feature, folding center armrest w/storage compartment, cup holders
- Audible/visible anti-theft vehicle alarm system-inc: doors, hood, trunk, radio, starter
- Center console-inc: (2) cup holders- Chrome loading edge protection
- Dual illuminated visor vanity mirrors w/covers
- Electronic climate control air conditioning w/pollen/dust filters
- Front center dome light w/time delay- Front door storage pockets w/rubber liners
- Front seatback storage pockets- Front/rear floor mats
- Front/rear passenger assist handles- Fully carpet-lined luggage compartment w/light
- Genuine walnut wood interior trim- Headlights-on warning tone- Homelink
- Illuminated lockable glove box w/adjustable cooling feature
- Immobilizer III theft-deterrent system
- Instrumentation-inc: speedometer, odometer, trip odometer, tachometer, fuel/ temp gauges, gear indicator, warning lights, digital clock
- Integrated armrests in door panels- Interior ambient lights- Leather hand brake grip
- Manual rear side sunshade- Mirror control pad w/joystick control
- Molded door trim in leatherette
- Multi-function trip computer-inc: trip time/length, average speed/fuel consumption, outside temp
- OnStar Telematics Pwr remote trunk/fuel door releases located on drivers door
- Rear heating/air conditioning ducts- Rear window defroster
- Seat belt reminder & fuel cap seal warning- Self-dimming rearview mirror w/switch
- Slidable folding front center armrest w/storage compartment- Sun visor extension
- Valet key- Wood shift knob

Mechanical

- 4-wheel anti-lock braking system (ABS)- Anti-Slip Regulation (ASR)
- Electronic Differential Lock (EDL)
- Traction control-inc: Electronic Stabilization Program (ESP), brake assist
- 16" x 7" alloy wheels w/anti-theft wheel locks- 16.4 gallon fuel tank
- 2.8L DOHC SMPI 30-valve V6 engine
- 5-speed automatic transmission w/Tiptronic & OD- 82 amp/hr battery
- 90-amp alternator- Front four-link suspension- Front wheel drive
- Front/rear coil springs/stabilizer bars- Front/rear gas shock absorbers
- Full-size spare tire- Full-size spare wheel
- Independent torsion beam axle rear suspension- P205/55HR16 all-season tires
- Pwr 4-wheel disc brakes w/vented front- Pwr rack & pinion steering

- Steel exhaust pipes

We sale used vehicles as is no warranty. We sale extended warranties ask one of our sales rep. for details.

Paniagua Auto Mall

Paniagua Auto Mall

View this car on our website at paniaguaautos.com/7139003

Website: paniaguaautos.com

Phone: 706-529-1919& 423-472-4045

Map: [1776 E. Walnut Ave , Dalton, GA 30721](https://www.google.com/maps/place/1776+E+Walnut+Ave,+Dalton,+GA+30721)

