

## 2015 Jeep Cherokee Trailhawk 4x4 SUV w/Nav, Backup Cam, Heated Seats, Premium Audio & Tow Package

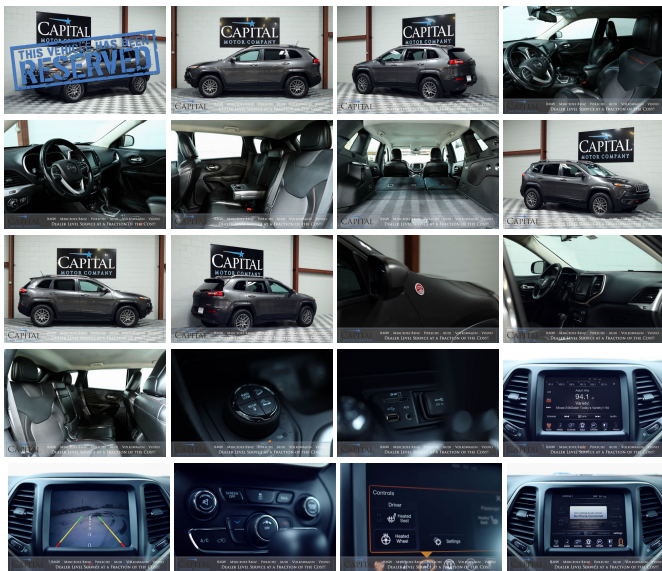
View this car on our website at [capitalmotorcompany.com/7137977/ebrochure](http://capitalmotorcompany.com/7137977/ebrochure)



Your Price **\$12,950**

### Specifications:

<b>Year:</b>	2015
<b>VIN:</b>	1C4PJMB50FW690839
<b>Make:</b>	Jeep
<b>Stock:</b>	5728
<b>Model/Trim:</b>	Cherokee Trailhawk 4x4 SUV w/Nav, Backup Cam, Heated Seats, Premium Audio & Tow Package
<b>Condition:</b>	Pre-Owned
<b>Body:</b>	SUV
<b>Exterior:</b>	Granite Crystal Metallic Clearcoat
<b>Engine:</b>	3.2-Liter V6
<b>Interior:</b>	Black
<b>Transmission:</b>	9-Speed Automatic
<b>Mileage:</b>	148,532
<b>Drivetrain:</b>	4 Wheel Drive
<b>Economy:</b>	City 19 / Highway 26



We have for sale a gorgeous 2015 Jeep Cherokee Trailhawk 4x4 Sport-Utility Crossover SUV that looks and drives amazing! It has gorgeous Granite Crystal paint, 17-Inch Gunmetal Gray Wheels with upgraded beefy All-Terrain Tires and aggressive Trailhawk styling that gives this Jeep an incredible stance! We know that if you like how it looks in the pictures you will fall in love when you get to drive it!

- Active Drive II Full-Time 4-Wheel Drive is Jeep's upgraded optional 4x4 system that provides exceptional traction in all weather conditions!
  - Low-Range 4x4 Gearing and Locking Rear Differential for really difficult terrain!
- Selec-Terrain Traction Control Dial allows the driver to tailor the Jeep's 4x4 system to multiple terrain options
  - Auto, Snow, Sport, Sand/Mud and Rock Mode
- 3.2-Liter V6 Engine and 9-Speed Automatic Transmission are the top-of-the-line drivetrain option that provides the most power without sacrificing fuel mileage either (*only 2 MPG less than 4-cylinder Front Wheel Drive Models!*)
- Trailhawk Package Upgrades
  - Off-Road Capable Suspension Tuning
  - Underbody Skid Plate Protection

- Red Accented Tow Hooks
- Unique Exterior Trim Style
- Upgraded Interior Surfaces
- Touchscreen Navigation System with turn-by-turn directions
- Rear-View Camera System that activates automatically when you shift to reverse
- Cold Weather Group
  - Heated Steering Wheel
  - Heated Seats
  - Factory Remote Start
- UConnect 8.4 Touchscreen INFOTainment System
  - Bluetooth Streaming Audio Connection
  - SiriusXM Satellite Radio Ready
  - Aux/USB Audio Inputs
  - AM/FM Audio
- Trailer Tow Group
  - Heavy Duty Engine Cooling Upgrade
  - Class III Receiver Hitch
  - 7 and 4 Pin Wiring Hook Ups
- Split-Folding Rear Seats
- Rear Cargo Area

As you can see from the pictures this Jeep has been very well cared for and has a lot to offer. The *AutoCheck History Report shows the title as "Not Actual Miles" from 2020*, however, based on titling records and other data available, the mileage appears to be accurate. While we typically do not sell vehicles with any sort of title concern, after a thorough inspection, we felt this Jeep was simply too nice to send to auction and given the current market, it is very difficult to find clean, reliable vehicles in this price range so we wanted to offer it for sale.

To make sure this Jeep Trailhawk 4x4 runs and drives perfect, we had it fully inspected and certified to be sold. This inspection process is thorough so there are absolutely no surprises when you come to drive it. If you have any questions or want to discuss a possible trade, call us anytime at (715) 833-2020.

## Our Location :



2015 Jeep Cherokee Trailhawk 4x4 SUV w/Nav, Backup Cam, Heated Seats, Premium Audio & Tow Package  
Capital Motor Company - (715) 833-2020 - View this car on our website at [capitalmotorcompany.com/7137977/ebrochure](http://capitalmotorcompany.com/7137977/ebrochure)

## Installed Options

### Interior

- 1 Seatback Storage Pocket- 3 12V DC Power Outlets
- 3 12V DC Power Outlets and 1 120V AC Power Outlet
- 6-Way Driver Seat -inc: Manual Recline, Height Adjustment and Fore/Aft Movement
- 6-Way Passenger Seat -inc: Manual Recline, Height Adjustment, Fore/Aft Movement and Fold Flat
- 60-40 Folding Split-Bench Front Facing Manual Reclining Fold Forward Seatback Rear Seat w/Manual Fore/Aft
- 8.4" Touch Screen Display- Air Filtration- Cargo Area Concealed Storage- Cargo Net
- Cargo Space Lights- Carpet Floor Trim- Cloth/Leather/Vinyl Bucket Seats- Compass
- Covered Dashboard Storage, Driver And Passenger Door Bins and 1st Row Underseat Storage
- Cruise Control w/Steering Wheel Controls- Day-Night Rearview Mirror
- Delayed Accessory Power- Digital/Analog Appearance
- Driver And Passenger Visor Vanity Mirrors w/Driver And Passenger Illumination
- Driver Foot Rest- Fade-To-Off Interior Lighting- Front And Rear Map Lights
- Front Center Armrest and Rear Center Armrest- Front Cupholder
- Full Carpet Floor Covering -inc: Vinyl/Rubber Front And Rear Floor Mats
- Full Cloth Headliner
- Full Floor Console w/Covered Storage, Mini Overhead Console w/Storage, 3 12V DC Power Outlets and 1 120V AC Power Outlet
- Gauges -inc: Speedometer, Odometer, Voltmeter, Engine Coolant Temp, Tachometer, Oil Temperature, Transmission Fluid Temp, Trip Odometer and Trip Computer
- HVAC -inc: Underseat Ducts and Console Ducts - Illuminated Locking Glove Box
- Interior Trim -inc: Metal-Look Instrument Panel Insert, Simulated Wood Door Panel Insert, Metal-Look Console Insert and Chrome/Metal-Look Interior Accents
- Leather Gear Shifter Material- Leather/Metal-Look Steering Wheel
- Manual Air Conditioning
- Manual Anti-Whiplash Adjustable Front Head Restraints and Manual Adjustable Rear Head Restraints
- Manual Tilt/Telescoping Steering Column- Outside Temp Gauge

- Power 1st Row Windows w/Driver And Passenger 1-Touch Up/Down
- Power Door Locks w/Autolock Feature
- Power Rear Windows and Fixed 3rd Row Windows- Rear Cupholder
- Redundant Digital Speedometer
- Remote Keyless Entry w/Integrated Key Transmitter, Illuminated Entry and Panic Button
- Remote Releases -Inc: Power Fuel- Sentry Key Immobilizer- Systems Monitor
- Trip Computer- Valet Function- Vinyl Door Trim Insert

---

## Exterior

- Accent Color Exterior Mirrors
- Auto On/Off Projector Beam Halogen Daytime Running Headlamps w/Delay-Off
- Black Bodyside Cladding and Black Fender Flares
- Black Front Bumper w/Colored Bumper Insert and 2 Tow Hooks
- Black Grille w/Metal-Look Surround
- Black Rear Bumper w/Metal-Look Rub Strip/Fascia Accent and 1 Tow Hook
- Black Side Windows Trim- Body-Colored Door Handles
- Composite/Galvanized Steel Panels- Deep Tinted Glass
- Fixed Rear Window w/Fixed Interval Wiper and Defroster- Front Fog Lamps
- Front License Plate Bracket- Full-Size Spare Tire Mounted Inside Under Cargo
- LED Brakelights- Liftgate Rear Cargo Access- Lip Spoiler- Perimeter/Approach Lights
- Power Side Mirrors w/Manual Folding- Roof Rack Rails Only- Steel Spare Wheel
- Tailgate/Rear Door Lock Included w/Power Door Locks- Tires: P245/65R17 OWL AT
- Variable Intermittent Wipers- Wheels: 17" x 7.5" Aluminum

---

## Safety

- 1 Seatback Storage Pocket- 3 12V DC Power Outlets
- 3 12V DC Power Outlets and 1 120V AC Power Outlet
- 6-Way Driver Seat -inc: Manual Recline, Height Adjustment and Fore/Aft Movement
- 6-Way Passenger Seat -inc: Manual Recline, Height Adjustment, Fore/Aft Movement and Fold Flat
- 60-40 Folding Split-Bench Front Facing Manual Reclining Fold Forward Seatback Rear Seat w/Manual Fore/Aft
- 8.4" Touch Screen Display- Air Filtration- Cargo Area Concealed Storage- Cargo Net
- Cargo Space Lights- Carpet Floor Trim- Cloth/Leather/Vinyl Bucket Seats- Compass
- Covered Dashboard Storage, Driver And Passenger Door Bins and 1st Row Underseat Storage
- Cruise Control w/Steering Wheel Controls- Day-Night Rearview Mirror
- Delayed Accessory Power- Digital/Analog Appearance
- Driver And Passenger Visor Vanity Mirrors w/Driver And Passenger Illumination
- Driver Foot Rest- Fade-To-Off Interior Lighting- Front And Rear Map Lights
- Front Center Armrest and Rear Center Armrest- Front Cupholder
- Full Carpet Floor Covering -inc: Vinyl/Rubber Front And Rear Floor Mats
- Full Cloth Headliner
- Full Floor Console w/Covered Storage, Mini Overhead Console w/Storage, 3 12V DC Power Outlets and 1 120V AC Power Outlet
- Gauges -inc: Speedometer, Odometer, Voltmeter, Engine Coolant Temp, Tachometer, Oil Temperature, Transmission Fluid Temp, Trip Odometer and Trip Computer
- HVAC -inc: Underseat Ducts and Console Ducts - Illuminated Locking Glove Box
- Interior Trim -inc: Metal-Look Instrument Panel Insert, Simulated Wood Door Panel Insert, Metal-Look Console Insert and Chrome/Metal-Look Interior Accents
- Leather Gear Shifter Material- Leather/Metal-Look Steering Wheel
- Manual Air Conditioning
- Manual Anti-Whiplash Adjustable Front Head Restraints and Manual Adjustable Rear Head Restraints
- Manual Tilt/Telescoping Steering Column- Outside Temp Gauge
- Power 1st Row Windows w/Driver And Passenger 1-Touch Up/Down
- Power Door Locks w/Autolock Feature
- Power Rear Windows and Fixed 3rd Row Windows- Rear Cupholder
- Redundant Digital Speedometer
- Remote Keyless Entry w/Integrated Key Transmitter, Illuminated Entry and Panic Button
- Remote Releases -Inc: Power Fuel- Sentry Key Immobilizer- Systems Monitor
- Trip Computer- Valet Function- Vinyl Door Trim Insert

---

## Mechanical

- 1000# Maximum Payload- 15.8 Gal. Fuel Tank- 160 Amp Alternator- 4 Skid Plates
- 4-Wheel Disc Brakes w/4-Wheel ABS, Front Vented Discs, Brake Assist, Hill Descent Control, Hill Hold Control and Electric Parking Brake
- 4.08 Axle Ratio- 730CCA Maintenance-Free Battery w/Run Down Protection
- Automatic Full-Time Four-Wheel Drive- Auxiliary Transmission Oil Cooler
- Driver Selectable Rear Locking Differential- Electric Power-Assist Speed-Sensing Steering
- Electronic Transfer Case- Engine Oil Cooler- Engine: 2.4L I4 MultiAir -inc: Tigershark

- Federal Emissions- Front And Rear Anti-Roll Bars- GVWR: 5,500 lbs
- Gas-Pressurized Shock Absorbers- Multi-Link Rear Suspension w/Coil Springs
- Off Road Suspension- Permanent Locking Hubs
- Single Stainless Steel Exhaust w/Chrome Tailpipe Finisher
- Strut Front Suspension w/Coil Springs- Towing Equipment -inc: Trailer Sway Control
- Transmission w/Driver Selectable Mode and Sequential Shift Control
- Transmission: 9-Speed 948TE Automatic 2 Speed PTU

## Option Packages

### Factory Installed Packages

-	
ENGINE: 3.2L V6 24V VVT -inc: Pentastar, 50 State Emissions, 3 Additional Gallons Of Gas, Dual Bright Exhaust Tips, Stop-Start Multiple VSM System, 3.25 Axle Ratio	\$1,745
-	
TRANSMISSION: 9-SPEED 948TE AUTOMATIC 2 SPEED PTU	
-	
9 AMPLIFIED SPEAKERS W/SUBWOOFER	\$395
-	
BLACK HOOD DECAL	\$199
-	
COLD WEATHER GROUP -inc: Engine Block Heater, Exterior Mirrors w/Heating Element, Windshield Wiper De-Icer, Power Heated Mirrors, Heated Front Seats, Heated Steering Wheel, Jeep Rack Off Road Accessory Kit	\$795
-	
COMFORT/CONVENIENCE GROUP -inc: Passive Entry/Keyless Go, Remote Start System, SIRIUSXM Satellite Radio, No Satellite Coverage w/AK/HL, Air Conditioning ATC w/Dual Zone Control, Power 8-Way Driver Seat, Power 4-Way Driver Lumbar Adjust, Rear View Auto Dim Mirror w/Microphone, Remote Proximity Keyless Entry, Universal Garage Door Opener, Humidity Sensor, Power Liftgate, Security Alarm, Premium Air Filter	\$1,645
-	
RADIO: UCONNECT 8.4AN AM/FM/SXM/HD/BT/NAV -inc: SIRIUSXM Satellite Radio, No Satellite Coverage w/AK/HL, HD Radio, 1 Year Trial (Registration Required), 5-Year SiriusXM Travel Link Service, GPS Navigation, 5-Year SiriusXM Traffic Service, SiriusXM Travel Link, SIRIUSXM Traffic	\$845
-	
TRAILER TOW GROUP -inc: Jeep Rack Off Road Accessory Kit, 7 & 4 Pin Wiring Harness, Class III Receiver Hitch, Trailer Tow Wiring Harness	\$495
-	
QUICK ORDER PACKAGE 27E -inc: Engine: 3.2L V6 24V VVT, Transmission: 9-Speed 948TE Automatic 2 Speed PTU	
-	
GRANITE CRYSTAL METALLIC	

CLEARCOAT

-  
BLACK, CLOTH/LEATHER/VINYL  
BUCKET SEATS

-  
WHEELS: 17" X 7.5" ALUMINUM (WFK)  
\$495

-  
Option Packages Total  
\$6,614

Tax, title, license and dealer fees extra. Prices are subject to change without notice. All incentives include special APR and are subject to change without notice and are available to qualified credit according to management or lending institution guidelines. It is the customer's responsibility to verify options, features and details in description for accuracy.



[capitalmotorcompany.com](http://capitalmotorcompany.com)

(715) 833-2020

2833 Alpine Rd

Eau Claire, WI 54703

© 2023 AutoRevo - All rights reserved. - Powered by AutoRevo