

2018 Ford F-150 XL

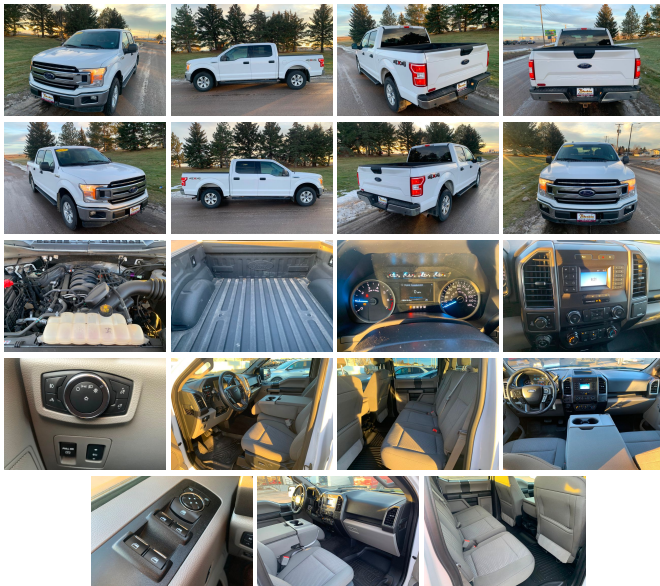
View this car on our website at bleskinmotors.com/7135943/ebrochure



Our Price **\$29,995**

Specifications:

Year:	2018
VIN:	1FTEW1E59JKC74401
Make:	Ford
Stock:	22050
Model/Trim:	F-150 XL
Condition:	Pre-Owned
Body:	Pickup Truck
Exterior:	White
Engine:	ENGINE: 5.0L V8
Interior:	-
Mileage:	80,264
Drivetrain:	4 Wheel Drive
Economy:	City 16 / Highway 22



Prepare to command the roads with the embodiment of strength and reliability in our 2018 Ford F-150 XL, a truck that merges brawn with beauty, utility with comfort, and endurance with elegance. With 80,264 miles on the odometer, this pristine white warrior is poised to deliver on promises of performance and power that only a Ford can offer.

Under the hood, the robust heartbeat of the ENGINE: 5.0L V8 roars to life, a testament to the legendary American engineering that Ford is renowned for. This powerhouse grants you the capability to tackle the toughest of tasks, whether you're hauling heavy loads or cruising down the highway. The V8 engine is not just a component; it's a statement of unrelenting power and durability that stands the test of time.

The exterior of this F-150 XL, dressed in a classic white, exudes a sense of purity and sophistication. Its color reflects more than just a choice; it's a canvas that highlights the truck's muscular contours and bold lines. The white finish brings an air of professionalism and versatility, making it the perfect companion for both the worksite and weekend adventures.

Step inside, and you'll find an interior designed with the driver in mind. Every detail, from the positioning of the controls to the comfort of the seating, is crafted to enhance your driving experience. The cabin is your command center, a place from which you can confidently navigate both urban jungles and rural expanses with equal ease.

The Ford F-150 XL is not just a vehicle; it's a mobile fortress equipped with an array of manufacturer options and packages that cater to your every need. While specific details of these packages have not been provided, rest assured that Ford's commitment to quality and customer satisfaction ensures that these additions only serve to elevate the truck's appeal and functionality.

Imagine the possibilities that await with this 2018 Ford F-150 XL. Envision the envy in the eyes of your neighbors as you pull into your driveway. Feel the surge of pride as you effortlessly tow your boat to the lake for a weekend escape. Relish the comfort and control you experience as you navigate through inclement weather, the V8's power at your fingertips.

This Ford F-150 XL isn't just a purchase; it's an investment in your lifestyle, your work, and your passions. It's a commitment to owning a vehicle that's as dependable as it is desirable, as efficient as it is exhilarating. With a history of satisfied owners and a future of untold adventures, this truck is ready to write the next chapter with you behind the wheel.


So why wait? Seize the opportunity to own not just a truck, but a legend. Come in today and experience firsthand the unmatched power and prestige of the 2018 Ford F-150 XL. Your journey towards excellence starts here.


2018 Ford F-150 XL


Bleskin Motor Company - 406-771-4691 - View this car on our website at bleskinmotors.com/7135943/ebrochure


CARFAX
 Snapshot


2018 FORD F-150 XLT



 No accidents or damage reported to CARFAX



 9 Service history records


 3 Previous owners


 Types of owners: Lease, Personal


 Last owned in Arkansas


80,377 Last reported odometer reading




FREE CARFAX Report

See the full CARFAX Report for additional information

*carfax Snapshot is a reflection of available information on the date the report was pulled. carfax is constantly being updated with new information and is subject to change at any time.

Our Location :



2018 Ford F-150 XL

Bleskin Motor Company - 406-771-4691 - View this car on our website at bleskinmotors.com/7135943/ebrochure

Installed Options

Interior

- Cloth 40/20/40 Front Seat -inc: 2-way manual driver/passenger adjustment and armrest
- 3 12V DC Power Outlets
- 4-Way Driver Seat -inc: Manual Recline and Fore/Aft Movement
- 4-Way Passenger Seat -inc: Manual Recline and Fore/Aft Movement
- 60-40 Folding Split-Bench Front Facing Fold-Up Cushion Rear Seat - Air Filtration
- Analog Appearance- Compass- Day-Night Rearview Mirror- Fade-To-Off Interior Lighting
- Front Center Armrest- Front Cupholder- Full Cloth Headliner
- Full Vinyl/Rubber Floor Covering
- Gauges -inc: Speedometer, Odometer, Voltmeter, Oil Pressure, Engine Coolant Temp, Tachometer, Transmission Fluid Temp and Trip Odometer
- Glove Box- HVAC -inc: Underseat Ducts
- Instrument Panel Bin, Dashboard Storage, Driver / Passenger And Rear Door Bins
- Interior Trim -inc: Cabback Insulator and Chrome Interior Accents
- Manual 1st Row Windows
- Manual Adjustable Front Head Restraints and Manual Adjustable Rear Head Restraints
- Manual Air Conditioning- Manual Rear Windows
- Manual Tilt/Telescoping Steering Column- Outside Temp Gauge
- Passenger Visor Vanity Mirror- Pickup Cargo Box Lights- Rear Cupholder
- Securilock Anti-Theft Ignition (pats) Immobilizer- Urethane Gear Shifter Material

Exterior

- Auto On/Off Aero-Composite Halogen Daytime Running Lights Preference Setting Headlamps w/Delay-Off
- Full-Size Spare Tire Stored Underbody w/Crankdown- Tires: P265/70R17 OWL A/T
- Wheels: 17" Silver Steel- Aluminum Panels- Black Door Handles
- Black Front Bumper w/Black Rub Strip/Fascia Accent and 2 Tow Hooks - Black Grille
- Black Manual Side Mirrors w/Convex Spotter and Manual Folding
- Black Rear Step Bumper- Black Side Windows Trim
- Cargo Lamp w/High Mount Stop Light- Clearcoat Paint- Fixed Rear Window
- Light Tinted Glass- Manual Tailgate/Rear Door Lock- Regular Box Style
- Steel Spare Wheel- Tailgate Rear Cargo Access- Variable Intermittent Wipers

Safety

- Cloth 40/20/40 Front Seat -inc: 2-way manual driver/passenger adjustment and armrest
- 3 12V DC Power Outlets
- 4-Way Driver Seat -inc: Manual Recline and Fore/Aft Movement
- 4-Way Passenger Seat -inc: Manual Recline and Fore/Aft Movement
- 60-40 Folding Split-Bench Front Facing Fold-Up Cushion Rear Seat - Air Filtration
- Analog Appearance- Compass- Day-Night Rearview Mirror- Fade-To-Off Interior Lighting
- Front Center Armrest- Front Cupholder- Full Cloth Headliner
- Full Vinyl/Rubber Floor Covering
- Gauges -inc: Speedometer, Odometer, Voltmeter, Oil Pressure, Engine Coolant Temp, Tachometer, Transmission Fluid Temp and Trip Odometer
- Glove Box- HVAC -inc: Underseat Ducts
- Instrument Panel Bin, Dashboard Storage, Driver / Passenger And Rear Door Bins
- Interior Trim -inc: Cabback Insulator and Chrome Interior Accents
- Manual 1st Row Windows
- Manual Adjustable Front Head Restraints and Manual Adjustable Rear Head Restraints
- Manual Air Conditioning- Manual Rear Windows
- Manual Tilt/Telescoping Steering Column- Outside Temp Gauge
- Passenger Visor Vanity Mirror- Pickup Cargo Box Lights- Rear Cupholder
- Securilock Anti-Theft Ignition (pats) Immobilizer- Urethane Gear Shifter Material

Mechanical

- Engine: 3.3L V6 PFDI -inc: auto start-stop technology and flex-fuel capability
- Transmission w/SelectShift Sequential Shift Control
- Transmission: Electronic 6-Speed Automatic -inc: selectable drive modes: normal/tow-haul/sport
- 1680# Maximum Payload- 200 Amp Alternator- 26 Gal. Fuel Tank- 3.73 Axle Ratio
- 4-Wheel Disc Brakes w/4-Wheel ABS, Front And Rear Vented Discs, Brake Assist, Hill Hold Control and Electric Parking Brake
- 70-Amp/Hr 610CCA Maintenance-Free Battery w/Run Down Protection
- Auto Locking Hubs- Double Wishbone Front Suspension w/Coil Springs
- Electric Power-Assist Speed-Sensing Steering- Electronic Transfer Case
- Front Anti-Roll Bar- GVWR: 6,500 lbs Payload Package- HD Shock Absorbers

Option Packages

Factory Installed Packages

ENGINE: 5.0L V8

-inc: auto start-stop technology and flex-fuel capability, 3.31 Axle Ratio, GVWR: 7,000 lbs Payload Package **\$1,995**

Option Packages Total

\$1,995

- Part-Time Four-Wheel Drive- Single Stainless Steel Exhaust
 - Solid Axle Rear Suspension w/Leaf Springs- Towing Equipment -inc: Trailer Sway Control
 - Trailer Wiring Harness
-

Bleskin Motor Company

bleskinmotors.com

406-771-4691

4901 10th Avenue South

Great Falls, Montana 59405

© 2024 AutoRevo - All rights reserved. - Powered by [AutoRevo](#)