

2022 Ram 1500 TRX 4X4 DUPONT KEVLAR,LIFTED,BUMPERS,LED'S,20'S

View this car on our website at tveauto.com/7135628/ebrochure



Our Price **\$129,900**

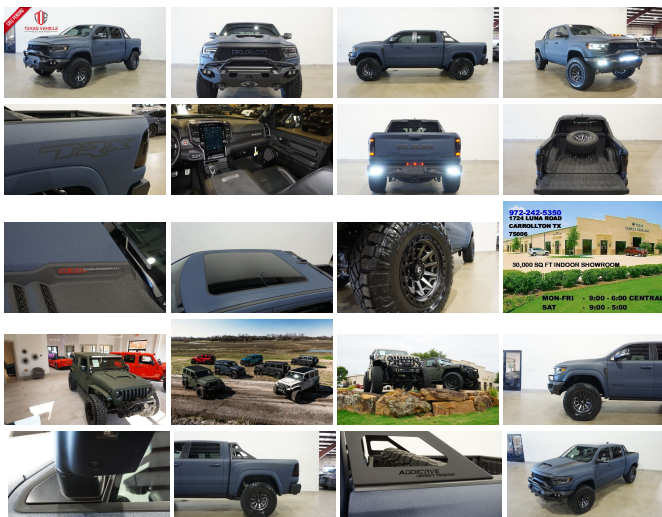
Specifications:

Year:	2022
VIN:	1C6SRFU91NN301923
Make:	Ram
Stock:	301923
Model/Trim:	1500 TRX 4X4 DUPONT KEVLAR,LIFTED,BUMPERS,LED'S,20'S
Condition:	Pre-Owned
Body:	Pickup Truck
Exterior:	Blue
Engine:	ENGINE: 6.2L SUPERCHARGED HEMI V8 SRT
Interior:	Black Leather
Transmission:	TRANSMISSION: 8-SPEED AUTOMATIC (8HP95)
Mileage:	1,553
Drivetrain:	4 Wheel Drive
Economy:	City 10 / Highway 14

NATION WIDE FINANCING

SUBMIT CREDIT APP [WWW.TVEAUTO.COM](https://www.tveauto.com)

OR CALL 972-242-5350



2022 RAM 1500 TRX CREW CAB 4X4, 6.2L SUPERCHARGED HEMI V8 SRT ENGINE, 8 SPEED AUTOMATIC TRANSMISSION, ONLY 1K, FERRARI NART BLUE KEVLAR COATING W/BLACK LEATHER INTERIOR, CARFAX REPORTS 1 OWNER NO ACCIDENTS, NON-SMOKER, TRX LEVEL 2 EQUIPMENT GROUP, REMOTE START, CUSTOM 2" LEVEL KIT, FAB FOURS MATRIX FRONT BUMPER WITH 30" LED LIGHT BAR & 4 RIGID INDUSTRIES DUAL LED LIGHTS

TRID INDUSTRIES DORET D2 LED LIGHTS,
SMITTYBILT NEW GEN II "X20" 10,000 LB
WATERPROOF AND WIRELESS CONTROL
WINCH WITH SYNTHETIC ROPE,
FACTOR 55 PROLINK (BLACK), FRONT D-
RINGS & ISOLATORS (ANTHRACITE),
FRONT & REAR PARK DISTANCE SENSORS,
HEAD-UP DISPLAY, DUAL-PANE
PANORAMIC SUNROOF, 12.0" TOUCH
SCREEN NAVIGATION, BACK-UP CAMERA,
360 VIEW CAMERAS, POWER
RETRACTABLE RUNNING BOARDS, POWER
WINDOWS, POWER DOOR LOCKS, POWER
FOLDING HEATED MIRRORS WITH TURN
SIGNALS, BLIND SPOT CONTROL, HEATED
TILT/TELESCOPE STEERING WHEEL WITH
AUDIO & CRUISE CONTROLS, PADDLE
SHIFTERS, DUAL POWER HEATED &
COOLED FRONT SEATS WITH DRIVER 2
MEMORY POSITION, POWER ADJUSTABLE
PEDALS, TRACTION CONTROL, HILL
DESCENT CONTROL, TRX MODE, LAUNCH
MODE, TRAILER BRAKE CONTROLLER,
AUXILIARY SWITCHES, ICE COLD A/C, DUAL
CLIMATE CONTROL, HARMAN/KARDON HD
AM/FM/SIRIUS STEREO, U-CONNECT, SELF
DIMMING REAR VIEW MIRROR, HOMELINK
GARAGE CONTROLS, DUAL LIGHTED
VANITY MIRRORS, REAR HEATED &
COOLED SEATS, REAR A/C VENTS, POWER
SLIDING REAR WINDOW, ADDICTIVE
DESERT DESIGNS STEALTH FIGHTER
CHASE RACK, MOPAR BED MOUNTED TIRE
CARRIER, SPRAY IN BEDLINER, TINTED
TAIL LIGHTS, FAB FOURS VENGEANCE
REAR BUMPER WITH 2 6" LED LIGHT BARS,
TOW PACKAGE WITH RECEIVER HITCH,
RUBBER FLOOR MATS, OWNER'S MANUAL,
2 KEYS/2 REMOTES. 20" FUEL MATTE
ANTHRACITE W/BLACK RING "COVERT"
WHEELS, FRONT TIRES ARE BRAND NEW
NITTO RIDGE GRAPPLER 37X13.50R/20,
REAR TIRES ARE BRAND NEW NITTO
RIDGE GRAPPLER 37X13.50R/20. RUNS
AND DRIVES GREAT. GIVE US A CALL @
972-242-5350 OR STOP BY FOR A TEST
DRIVE. 1724 LUNA RD IN CARROLLTON - 2
MII FS NORTH OF 635. CLICK ON CARFAX

THREE MONTHS OF 300. CLICK ON CAR WITH
ICON TO VIEW A FULL REPORT AT NO
COST TO YOU.

2022 Ram 1500 TRX 4X4 DUPONT KEVLAR,LIFTED,BUMPERS,LED'S,20'S

Texas Vehicle Exchange - 972-242-5350 - View this car on our website at veauto.com/7135628/ebrochure

Our Location :



2022 Ram 1500 TRX 4X4 DUPONT KEVLAR,LIFTED,BUMPERS,LED'S,20'S

Texas Vehicle Exchange - 972-242-5350 - View this car on our website at veauto.com/7135628/ebrochure

Installed Options

Interior

- 8-Way Power Driver Seat -inc: Power Recline, Height Adjustment, Fore/Aft Movement and Cushion Tilt
- Cloth/Vinyl Bucket Seats- Day-Night Auto-Dimming Rearview Mirror
- FOB Controls -inc: Remote Engine Start
- Gauges -inc: Speedometer, Odometer, Voltmeter, Oil Pressure, Engine Coolant Temp, Tachometer, Inclinator, Altimeter, Oil Temperature, Transmission Fluid Temp, Engine Hour Meter, Trip Odometer and Trip Computer
- Passenger Visor Vanity Mirror w/Passenger Illumination
- Power 1st Row Windows w/Driver And Passenger 1-Touch Up/Down
- Power Door Locks w/Autolock Feature- Power Rear Windows
- Proximity Key For Push Button Start Only - Rear 60/40 Folding Seat
- Remote Keyless Entry w/Integrated Key Transmitter, Illuminated Entry and Panic Button
- Seats w/Cloth Back Material- Smart Device Remote Engine Start
- Sport Leather Steering Wheel- Trip Computer- 2 12V DC Power Outlets
- 2 12V DC Power Outlets and 2 120V AC Power Outlets - 4 Way Front Headrests
- 4-Way Passenger Seat -inc: Manual Recline and Fore/Aft Movement
- 4G LTE Wi-Fi Hot Spot Mobile Hotspot Internet Access- Air Filtration
- Analog Appearance- Bucket Seats- Compass- Cruise Control w/Steering Wheel Controls
- Delayed Accessory Power- Dual Zone Front Automatic Air Conditioning w/Front Infrared
- Fade-To-Off Interior Lighting- Front Center Armrest w/Storage and Rear Center Armrest

Option Packages

Factory Installed Packages

ENGINE: 6.2L SUPERCHARGED HEMI V8 SRT

TRANSMISSION: 8-SPEED AUTOMATIC (8HP95)

DUAL-PANE PANORAMIC SUNROOF

-inc: Dome Dual LED Reading Lamp **\$1,495**

TRX LEVEL 2 EQUIPMENT GROUP

-inc: Full Length Premium Upgraded Floor Console, Rear Window Defroster, Surround View Camera System, Blind Spot & Cross Path Detection, Rain Sensitive Windshield Wipers, LED CHMSL Lamp, ParkSense Front/Rear Park Assist w/Stop, Power Adjustable Pedals w/Memory, Pick-Up Box Lighting, Body Color Door Handles, MOPAR Bright Pedal Kit, IP LED Ambient Light Pipe, Rear Underseat Compartment Storage, Trailer Brake Control, Head Up Display, Heated Second Row Seats, Heated Steering Wheel, Leather/Suede Flat-

\$10,295

- Front Facing Cloth/Vinyl Rear Seat- Front Map Lights- Front Seat Back Map Pockets
- Full Carpet Floor Covering MOPAR -inc: Vinyl/Rubber Front And Rear Floor Mats
- Full Cloth Headliner
- Full Floor Console w/Covered Storage, Mini Overhead Console w/Storage, 2 12V DC Power Outlets and 2 120V AC Power Outlets
- HVAC -inc: Underseat Ducts and Console Ducts - Illuminated Front Cupholder
- Illuminated Locking Glove Box
- Instrument Panel Bin, Dashboard Storage, Interior Concealed Storage, Driver / Passenger And Rear Door Bins
- Interior Trim -inc: Deluxe Sound Insulation, Metal-Look/Piano Black Instrument Panel Insert, Piano Black Door Panel Insert, Metal-Look Console Insert and Aluminum/Metal-Look Interior Accents
- Leather/Metal-Look Gear Shifter Material- Manual Adjustable Rear Head Restraints
- Manual Tilt/Telescoping Steering Column- Outside Temp Gauge- Perimeter Alarm
- Pickup Cargo Box Lights- Power 4-Way Driver Lumbar Adjust- Rear Cupholder
- Redundant Digital Speedometer- Sentry Key Immobilizer- Smart Device Integration
- Systems Monitor- Valet Function- Vinyl Door Trim Insert

Exterior

- Black Front Bumper w/Metal-Look Rub Strip/Fascia Accent and 2 Tow Hooks
- Black Rear Step Bumper w/1 Tow Hook - Exterior Mirrors w/Heating Element
- Exterior Mirrors w/Supplemental Signals
- Power Side Mirrors w/Driver Auto Dimming and Convex Spotter - Power-Folding Mirrors
- Tailgate/Rear Door Lock Included w/Power Door Locks- Variable Intermittent Wipers
- Wheels: 18" x 9" Black Paint/Polish Aluminum - Aluminum Spare Wheel
- Auto On/Off Aero-Composite Led Low/High Beam Daytime Running Auto High-Beam Headlamps w/Delay-Off
- Black Door Handles- Black Exterior Mirrors- Black Fender Flares- Black Grille
- Black Side Windows Trim- Cab Clearance Lights- Cargo Lamp w/High Mount Stop Light
- Clearcoat Paint w/Decal- Deep Tinted Glass- Exterior Mirrors Courtesy Lamps
- Front Fog Lamps- Full-Size Spare Tire Stored Underbody w/Crankdown
- Galvanized Steel/Aluminum Panels- Headlights-Automatic Highbeams- LED Brakelights
- Laminated Glass- Power Rear Window- Regular Box Style- Tailgate Rear Cargo Access
- Tires: LT325/65R18D All Terrain

Safety

- 8-Way Power Driver Seat -inc: Power Recline, Height Adjustment, Fore/Aft Movement and Cushion Tilt
- Cloth/Vinyl Bucket Seats- Day-Night Auto-Dimming Rearview Mirror
- FOB Controls -inc: Remote Engine Start
- Gauges -inc: Speedometer, Odometer, Voltmeter, Oil Pressure, Engine Coolant Temp, Tachometer, Inclinator, Altimeter, Oil Temperature, Transmission Fluid Temp, Engine Hour Meter, Trip Odometer and Trip Computer
- Passenger Visor Vanity Mirror w/Passenger Illumination
- Power 1st Row Windows w/Driver And Passenger 1-Touch Up/Down
- Power Door Locks w/Autolock Feature- Power Rear Windows
- Proximity Key For Push Button Start Only - Rear 60/40 Folding Seat
- Remote Keyless Entry w/Integrated Key Transmitter, Illuminated Entry and Panic Button
- Seats w/Cloth Back Material- Smart Device Remote Engine Start
- Sport Leather Steering Wheel- Trip Computer- 2 12V DC Power Outlets
- 2 12V DC Power Outlets and 2 120V AC Power Outlets - 4 Way Front Headrests
- 4-Way Passenger Seat -inc: Manual Recline and Fore/Aft Movement
- 4G LTE Wi-Fi Hot Spot Mobile Hotspot Internet Access- Air Filtration
- Analog Appearance- Bucket Seats- Compass- Cruise Control w/Steering Wheel Controls
- Delayed Accessory Power- Dual Zone Front Automatic Air Conditioning w/Front Infrared
- Fade-To-Off Interior Lighting- Front Center Armrest w/Storage and Rear Center Armrest
- Front Facing Cloth/Vinyl Rear Seat- Front Map Lights- Front Seat Back Map Pockets
- Full Carpet Floor Covering MOPAR -inc: Vinyl/Rubber Front And Rear Floor Mats
- Full Cloth Headliner
- Full Floor Console w/Covered Storage, Mini Overhead Console w/Storage, 2 12V DC Power Outlets and 2 120V AC Power Outlets
- HVAC -inc: Underseat Ducts and Console Ducts - Illuminated Front Cupholder
- Illuminated Locking Glove Box
- Instrument Panel Bin, Dashboard Storage, Interior Concealed Storage, Driver / Passenger And Rear Door Bins
- Interior Trim -inc: Deluxe Sound Insulation, Metal-Look/Piano Black Instrument Panel Insert, Piano Black Door Panel Insert, Metal-Look Console Insert and Aluminum/Metal-Look Interior Accents
- Leather/Metal-Look Gear Shifter Material- Manual Adjustable Rear Head Restraints
- Manual Tilt/Telescoping Steering Column- Outside Temp Gauge- Perimeter Alarm
- Pickup Cargo Box Lights- Power 4-Way Driver Lumbar Adjust- Rear Cupholder
- Redundant Digital Speedometer- Sentry Key Immobilizer- Smart Device Integration
- Systems Monitor- Valet Function- Vinyl Door Trim Insert

Bottom Steering Wheel, Wireless Charging Pad, Driver/Passenger Wrapped Assist Handles, Ventilated Rear Seats, Rear 60/40 Folding Split Recline Seat, Ventilated Front Seats, Remote Tailgate Release, harman/kardon 19 Speaker Premium Sound, Premium Wrapped IP Bezel, 2-Door Passive Entry, Front Door Locks, Universal Garage Door Opener, Exterior Mirrors w/Memory, Luxury Front Door Trim Panel, Driver Seat Memory, Front Door Accent Lighting, Power 8-Way Driver & Passenger Seats,

QUICK ORDER PACKAGE 29Y

-inc: Engine: 6.2L Supercharged HEMI V8 SRT, Transmission: 8-Speed Automatic (8HP95)

Option Packages Total

\$11,790

Mechanical

- 1310# Maximum Payload- 250 Amp Alternator- 3.55 Rear Axle Ratio- 33 Gal. Fuel Tank
- 4-Wheel Disc Brakes w/4-Wheel ABS, Front And Rear Vented Discs, Brake Assist, Hill Descent Control, Hill Hold Control and Electric Parking Brake
- 5 Skid Plates- 800CCA Maintenance-Free Battery- Auto Locking Hubs
- Automatic Full-Time Four-Wheel Drive
- Automatic w/Driver Control Ride Control Off-Road Adaptive Suspension
- Bilstein Brand Name Shock Absorbers
- Class IV Towing Equipment -inc: Hitch and Trailer Sway Control
- Driver Selectable Rear Locking Differential
- Dual Stainless Steel Exhaust w/Black Tailpipe Finisher- Electric Power-Assist Steering
- Electronic Transfer Case- Engine Oil Cooler- Engine: 6.2L Supercharged HEMI V8 SRT
- Federal Emissions- Front Anti-Roll Bar- GVWR: 7,800 lbs
- Short And Long Arm Front Suspension w/Coil Springs
- Solid Axle Rear Suspension w/Coil Springs- Trailer Wiring Harness
- Transmission w/Driver Selectable Mode and Sequential Shift Control w/Steering Wheel Controls
- Transmission: 8-Speed Automatic (8HP95)

Texas Vehicle Exchange

tveauto.com

972-242-5350

1724 Luna Road

Carrollton, TX 75006

© 2024 AutoRevo - All rights reserved. - Powered by [AutoRevo](#)