

2023 Ford F-150 LARIAT

View this car on our website at askjorgelopez.com/7134970/ebrochure

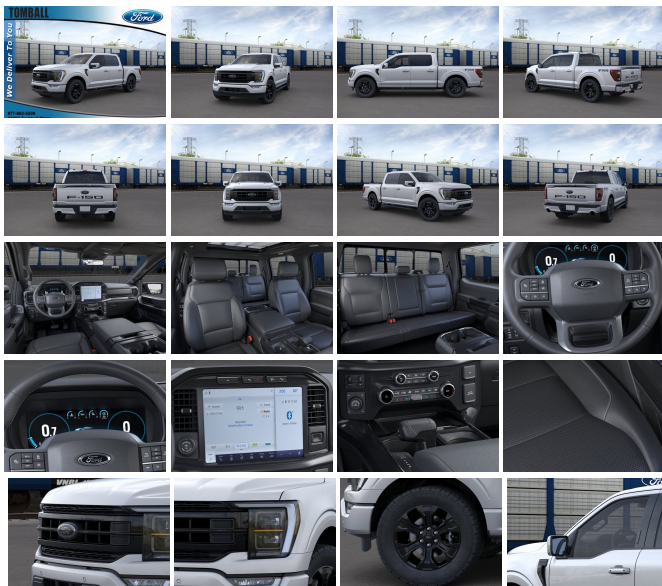


Our Price **\$76,220**

Retail Value **\$77,720**

Specifications:

Year: 2023
VIN: 1FTFW1E81PFA17698
Make: Ford
Stock: FA17698
Model/Trim: F-150 LARIAT
Condition: New
Body: Pickup Truck
Exterior: ICONIC SILVER METALLIC
Engine: ENGINE: 3.5L V6 ECOBOOST
Interior: LARIAT BLACK PACK SEAT BLACK Leather
Mileage: 6
Drivetrain: 4 Wheel Drive
Economy: City 17 / Highway 23



"You'll have no regrets driving this impeccable 2023 Ford F-150. Tire Specific Low Tire Pressure Warning, Side Impact Beams, Safety Canopy System Curtain 1st And 2nd Row Airbags, Reverse Sensing System Rear Parking Sensors, Rear Child Safety Locks.*Fully-Loaded with Additional Options*MAX TRAILER TOW PACKAGE -inc: max towing capability up to TBD lbs, and upgraded rear bumper, Integrated Trailer Brake Controller, Extended Range 36 Gallon Fuel Tank, Pro Trailer Backup Assist, LARIAT SPORT APPEARANCE PACKAGE -inc: unique interior finish, Box Side Decals, Chrome Single-Tip Exhaust, Accent-Color Angular Step Bars, Dark 2-Bar & 1 Minor Bar Style Grille, black surround and black mesh, Body-Color Front & Rear Bumpers, LARIAT BLACK APPEARANCE PACKAGE -inc: Black 6" Angular Step Bars, Black Exterior Badging, Wheels: 20" Gloss Black Painted Aluminum, Tires: 275/60R20 BSW AT, Unique Hood & Grille w/Black Accent, Black Taillamp Bezels, Dark Interior Appliques, Matte Black Tailgate F-150 Decal, FX4 OFF-ROAD PACKAGE -inc: Off-Road Tuned Front Shock Absorbers, Skid Plates, fuel tank, transfer case and front differential, Monotube Rear Shocks, Rock Crawl Mode, 4x4 FX4 Off-Road Bodyside Decal, Hill Descent Control, ENGINE: 3.5L V6 ECOBOOST -inc: GVWR: 7,050 lbs Payload Package, 3.31 Axle Ratio, ENGINE: 3.5L V6 ECOBOOST -inc: auto start-stop technology, GVWR: 7,050 lbs Payload Package, 3.31 Axle Ratio, LARIAT SPORT APPEARANCE PACKAGE -inc: unique interior finish, Box Side Decals, Chrome Single-Tip Exhaust, Accent-Color Angular Step Bars, Dark 2-Bar & 1 Minor Bar Style Grille, black surround and black mesh, Body-Color Front & Rear Bumpers, LARIAT BLACK APPEARANCE PACKAGE -inc: Black 6" Angular Step Bars, Black Exterior Badging, Wheels: 20" Gloss Black Painted Aluminum, Tires: 275/60R20 BSW AT, Unique Hood & Grille w/Black Accent, Black Taillamp Bezels, Dark Interior Appliques, Matte Black Tailgate F-150 Decal, INTERIOR WORK SURFACE, ICONIC SILVER METALLIC.* Stop By Today *Come in for a quick visit at Tomball Ford, 22702 Tomball Parkway, Tomball, TX 77375 to claim your Ford F-150!"

2023 Ford F-150 LARIAT

Ask Jorge Lopez - (866) 773-1396 - View this car on our website at askjorgelopez.com/7134970/ebrochure

Our Location :



2023 Ford F-150 LARIAT

Ask Jorge Lopez - (866) 773-1396 - View this car on our website at askjorgelopez.com/7134970/ebrochure

Installed Options

Interior

- Driver Seat- Passenger Seat
- 60-40 Folding Split-Bench Front Facing Fold-Up Cushion Rear Seat
- Manual Tilt/Telescoping Steering Column
- Gauges -inc: Speedometer, Odometer, Voltmeter, Oil Pressure, Engine Coolant Temp, Tachometer, Transmission Fluid Temp, Trip Odometer and Trip Computer
- Power Rear Windows- FordPass Connect 4G Mobile Hotspot Internet Access
- Heated Leather/Metal-Look Steering Wheel- Illuminated Front Cupholder
- Rear Cupholder- Compass
- Remote Keyless Entry w/Integrated Key Transmitter, Illuminated Entry and Panic Button
- Keypad- Proximity Key For Doors And Push Button Start
- Remote Releases -Inc: Keyfob Cargo Access- Garage Door Transmitter
- Cruise Control w/Steering Wheel Controls- Dual Zone Front Automatic Air Conditioning
- HVAC -inc: Underseat Ducts and Console Ducts - Locking Glove Box
- Full Cloth Headliner
- Interior Trim -inc: Metal-Look Instrument Panel Insert, Cabback Insulator, Metal-Look Door Panel Insert, Metal-Look Console Insert and Chrome/Metal-Look Interior Accents
- Leather/Chrome Gear Shifter Material
- Leather-Trimmed Bucket Seats -inc: heated and ventilated 10-way power driver seat and multi-adjustable power front passenger, power lumbar driver/passenger, memory driver's seat, flow through console w/floor shift and two (2) USB charge only ports
- Day-Night Auto-Dimming Rearview Mirror
- Driver And Passenger Visor Vanity Mirrors w/Driver And Passenger Illumination
- Mini Overhead Console w/Storage, 1 12V DC Power Outlet and 3 120V AC Power Outlets
- Fade-To-Off Interior Lighting- Front And Rear Map Lights
- Full Carpet Floor Covering -inc: Carpet Front And Rear Floor Mats
- Pickup Cargo Box Lights- Smart Device Remote Engine Start
- Memory Settings -inc: Door Mirrors and Pedals
- FOB Controls -inc: Cargo Access and Remote Engine Start
- SYNC 4 Connected Navigation Integrated Navigation System w/Voice Activation

- SYNC 4 w/Enhanced Voice Recognition -inc: 12" LCD capacitive touchscreen w/swipe capability, information on demand panel, wireless phone connection, cloud connected, AppLink w/App catalog, 911 Assist, Apple CarPlay and Android Auto compatibility, digital owners manual, conversational voice command recognition and connected navigation, Note: Navigation services require SYNC@4 and FordPass Connect (optional on select vehicles), complimentary connect service and the FordPass app (see FordPass Terms for details), Customer receives a complimentary 90-day trial of navigation services when an eligible vehicle is added to a member's FordPass account, Trial period begins on the new vehicle warranty start date, At the end of the complimentary period, navigation service will terminate, Connected service and features depend on compatible AT&T network availability, Evolving technology/cellular networks/vehicle capability may limit functionality and prevent operation of connected features, FordPass App, compatible w/select smartphone platforms, is available via a download, Message and data rates may apply
- Instrument Panel Bin, Dashboard Storage, Interior Concealed Storage, Driver / Passenger And Rear Door Bins and 2nd Row Underseat Storage
- Power 1st Row Windows w/Driver And Passenger 1-Touch Up/Down
- Delayed Accessory Power- Power Door Locks w/Autolock Feature
- Power Adjustable Pedals- Trip Computer- Outside Temp Gauge
- Redundant Digital Speedometer- Digital/Analog Appearance
- 2 Seatback Storage Pockets
- Manual Adjustable Front Head Restraints and Manual Adjustable Rear Head Restraints
- Seats w/Leatherette Back Material- Front Center Armrest and Rear Center Armrest
- Perimeter Alarm- Securilock Anti-Theft Ignition (pats) Immobilizer
- 1 12V DC Power Outlet- Air Filtration
- 1 12V DC Power Outlet and 3 120V AC Power Outlets

Exterior

- Wheels: 18" Chrome-Like PVD- Tires: 275/65R18 BSW A/T- Regular Box Style
- Steel Spare Wheel- Full-Size Spare Tire Stored Underbody w/Crankdown
- Clearcoat Paint- Chrome Rear Step Bumper
- Chrome Front Bumper w/Body-Colored Rub Strip/Fascia Accent and 2 Tow Hooks
- Black Side Windows Trim- Chrome Door Handles
- Chrome Power Heated Side Mirrors w/Driver Auto Dimming, Power Folding and Turn Signal Indicator
- Power Rear Window w/Defroster- Variable Intermittent Wipers- Deep Tinted Glass
- Aluminum Panels- Running Boards- Chrome Grille- Tailgate Rear Cargo Access
- Tailgate/Rear Door Lock Included w/Power Door Locks
- Cargo Lamp w/High Mount Stop Light- Front Fog Lamps- Perimeter/Approach Lights
- Headlights-Automatic Highbeams
- Ford Co-Pilot360 - Autolamp Auto On/Off Aero-Composite Led Low/High Beam Auto High-Beam Daytime Running Lights Preference Setting Headlamps w/Delay-Off
- LED Brakelights

Safety

- Driver Seat- Passenger Seat
- 60-40 Folding Split-Bench Front Facing Fold-Up Cushion Rear Seat
- Manual Tilt/Telescoping Steering Column
- Gauges -inc: Speedometer, Odometer, Voltmeter, Oil Pressure, Engine Coolant Temp, Tachometer, Transmission Fluid Temp, Trip Odometer and Trip Computer
- Power Rear Windows- FordPass Connect 4G Mobile Hotspot Internet Access
- Heated Leather/Metal-Look Steering Wheel- Illuminated Front Cupholder
- Rear Cupholder- Compass
- Remote Keyless Entry w/Integrated Key Transmitter, Illuminated Entry and Panic Button
- Keypad- Proximity Key For Doors And Push Button Start
- Remote Releases -Inc: Keyfob Cargo Access- Garage Door Transmitter
- Cruise Control w/Steering Wheel Controls- Dual Zone Front Automatic Air Conditioning
- HVAC -inc: Underseat Ducts and Console Ducts - Locking Glove Box
- Full Cloth Headliner
- Interior Trim -inc: Metal-Look Instrument Panel Insert, Cabback Insulator, Metal-Look Door Panel Insert, Metal-Look Console Insert and Chrome/Metal-Look Interior Accents
- Leather/Chrome Gear Shifter Material
- Leather-Trimmed Bucket Seats -inc: heated and ventilated 10-way power driver seat and multi-adjustable power front passenger, power lumbar driver/passenger, memory driver's seat, flow through console w/floor shift and two (2) USB charge only ports
- Day-Night Auto-Dimming Rearview Mirror
- Driver And Passenger Visor Vanity Mirrors w/Driver And Passenger Illumination
- Mini Overhead Console w/Storage, 1 12V DC Power Outlet and 3 120V AC Power Outlets
- Fade-To-Off Interior Lighting- Front And Rear Map Lights
- Full Carpet Floor Covering -inc: Carpet Front And Rear Floor Mats
- Pickup Cargo Box Lights- Smart Device Remote Engine Start
- Memory Settings -inc: Door Mirrors and Pedals
- FOB Controls -inc: Cargo Access and Remote Engine Start
- SYNC 4 Connected Navigation Integrated Navigation System w/Voice Activation
- SYNC 4 w/Enhanced Voice Recognition -inc: 12" LCD capacitive touchscreen w/swipe capability, information on demand panel, wireless phone connection, cloud connected,

Applink w/App catalog, 911 Assist, Apple CarPlay and Android Auto compatibility, digital owners manual, conversational voice command recognition and connected navigation, Note: Navigation services require SYNC@4 and FordPass Connect (optional on select vehicles), complimentary connect service and the FordPass app (see FordPass Terms for details). Customer receives a complimentary 90-day trial of navigation services when an eligible vehicle is added to a member's FordPass account. Trial period begins on the new vehicle warranty start date. At the end of the complimentary period, navigation service will terminate. Connected service and features depend on compatible AT&T network availability. Evolving technology/cellular networks/vehicle capability may limit functionality and prevent operation of connected features. FordPass App, compatible w/select smartphone platforms, is available via a download. Message and data rates may apply

- Instrument Panel Bin, Dashboard Storage, Interior Concealed Storage, Driver / Passenger And Rear Door Bins and 2nd Row Underseat Storage
- Power 1st Row Windows w/Driver And Passenger 1-Touch Up/Down
- Delayed Accessory Power- Power Door Locks w/Autolock Feature
- Power Adjustable Pedals- Trip Computer- Outside Temp Gauge
- Redundant Digital Speedometer- Digital/Analog Appearance
- 2 Seatback Storage Pockets
- Manual Adjustable Front Head Restraints and Manual Adjustable Rear Head Restraints
- Seats w/Leatherette Back Material- Front Center Armrest and Rear Center Armrest
- Perimeter Alarm- Securilock Anti-Theft Ignition (pats) Immobilizer
- 1 12V DC Power Outlet- Air Filtration
- 1 12V DC Power Outlet and 3 120V AC Power Outlets

Mechanical

- Engine: 2.7L V6 EcoBoost
- Transmission: Electronic 10-Speed Automatic -inc: selectable drive modes: normal, ECO, sport, tow/haul, slippery, deep snow/sand and mud/rut
- 3.55 Axle Ratio- GVWR: 6,600 lbs Payload Package- 50 State Emissions
- Electronic Transfer Case- Automatic Full-Time Four-Wheel Drive
- 70-Amp/Hr 610CCA Maintenance-Free Battery w/Run Down Protection
- 200 Amp Alternator- Towing Equipment -inc: Trailer Sway Control
- Class IV Trailer Hitch Receiver -inc: towing capability up to TBD lbs, on 3.3L V6 PFDI engine (99B) and 2.7L EcoBoost engine (99P) or up to TBD lbs, on 3.5L EcoBoost engine (998) and 5.0L V8 engine (995), 7/4-pin connector, class IV trailer hitch receiver, smart trailer tow connector (BLIS w/trailer tow coverage where BLIS is available)
- 1760# Maximum Payload- HD Shock Absorbers- Front Anti-Roll Bar
- Electric Power-Assist Speed-Sensing Steering- 26 Gal. Fuel Tank
- Single Stainless Steel Exhaust w/Chrome Tailpipe Finisher - Auto Locking Hubs
- Double Wishbone Front Suspension w/Coil Springs
- Solid Axle Rear Suspension w/Leaf Springs
- 4-Wheel Disc Brakes w/4-Wheel ABS, Front And Rear Vented Discs, Brake Assist, Hill Hold Control and Electric Parking Brake

Option Packages

Factory Installed Packages

- _____
ENGINE: 3.5L V6 ECOBOOST
\$1,540

- _____
Option Packages Total
\$1,540

Ask Jorge Lopez

askjorgelopez.com

(866) 773-1396

22702 Tomball Parkway

Tomball, TX 77375

© 2023 AutoRevo - All rights reserved. - Powered by AutoRevo