



## 2015 Chevrolet Silverado 2500HD LTZ CrewCab LongBed 6.0L Gas LTZ

**Sale Price \$21,990**

View this vehicle on our website at [dfwtruckco.com](http://dfwtruckco.com)



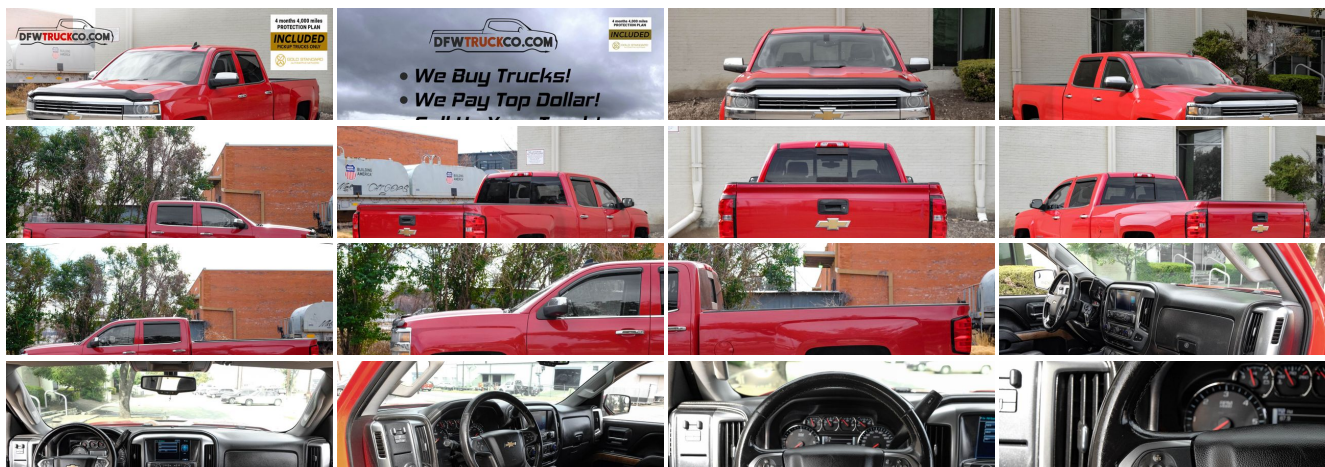
214-298-0620

8811 John W Carpenter Freeway, Dallas, TX 75247

Photos

Details

Contact





## Specifications:

<b>Year:</b>	2015
<b>VIN:</b>	<a href="#">1GC1CWEG9FF541221</a>
<b>Make:</b>	Chevrolet
<b>Stock:</b>	541221
<b>Model/Trim:</b>	Silverado 2500HD LTZ CrewCab LongBed 6.0L Gas LTZ
<b>Condition:</b>	Pre-Owned
<b>Body:</b>	Pickup Truck
<b>Exterior:</b>	RED
<b>Engine:</b>	ENGINE, VORTEC 6.0L VARIABLE VALVE TIMING V8 SFI E85-COMPATIBLE, FLEXFUEL
<b>Interior:</b>	Black Leather
<b>Mileage:</b>	170,104
<b>Drivetrain:</b>	Rear Wheel Drive

## Vehicle Description

Non-smoker owner, Vehicle Runs Well, Smooth ride, Regularly maintained, Lots of storage, Arctic cold a/c, Must test drive, Done all Scheduled Maintenance, Primarily highway miles, Family friendly, Drives great

**FREE 4 MO/4000 MILE POWERTRAIN WARRANTY OR EXTENDED WARRANTY AVAILABLE**

### 2015 CHEVROLET Silverado

Red Exterior  
Black Leather Interior  
170,168 Miles

---

#### **LTZ Pickup Trim Package**

##### **Backup Camera**

##### **Heated Seats**

Steering Wheel Controls  
Bluetooth Technology  
Dual Climate Control  
Satellite Radio  
AM/FM Radio  
CD Player  
Power Memory Seats  
Power Windows/Locks  
Power Mirrors  
Cruise Control  
Traction Control  
External Temperature  
Compass  
Keyless Entry  
Automatic Transmission

V8, Flex Fuel, 6.0 Liter Engine  
Well Maintained  
Professionally Detailed  
**And Much More!!**

## Installed Options

### Interior

- Cruise control, steering wheel-mounted- Defogger, rear-window electric
- Door locks, power
- Floor covering, color-keyed carpeting with rubberized vinyl floor mats (Double Cab and Crew Cabs include second row floor mats)
- Remote Keyless Entry- Seat trim, Leather-appointed front seats
- Seating, heated driver and front passenger
- Seats, front 40/20/40 leather-appointed split-bench, 3-passenger with (KA1) heated seat cushions and seat backs. Includes 10-way power driver and front passenger seat adjusters, including driver/front passenger power recline, driver/front passenger power lumbar, 2- position driver memory and adjustable outboard head restraints. (Upgradeable to (AN3) front full-featured leather-appointed bucket seats.)
- Steering wheel audio controls
- Steering wheel, leather-wrapped with audio and cruise controls
- Universal Home Remote (Removed when (TRW) provisions for roof mounted lamp or (VYU) Snow Plow Prep Package is ordered.)
- Window, power, rear sliding with rear defogger
- Air conditioning, dual-zone automatic climate control
- Assist handle, front passenger and driver on A-pillars
- Driver Information Center, 4.2-inch diagonal color display includes driver personalization, warning messages and vehicle information
- Instrumentation, 6-gauge cluster featuring speedometer, fuel level, engine temperature, tachometer, voltage and oil pressure
- Mirror, inside rearview auto-dimming- Power outlet, 110-volt AC
- Remote vehicle starter system
- Seat, rear 60/40 folding bench (folds up), 3-passenger (includes child seat top tether anchor)
- Steering column, manual Tilt-Wheel and telescoping
- Theft-deterrent system, unauthorized entry
- Visors, driver and front passenger illuminated vanity mirrors
- Windows, power with driver express up and down and express down on all other windows

### Exterior

- Mirrors, outside chrome cap, heated power-adjustable, power-folding and driver-side auto-dimming with integrated turn signal indicators and puddle lamps (includes driver's side spotter mirror)
- Tires, LT265/70R18E all-season, blackwall
- Wheels, 18" (45.7 cm) polished aluminum includes 18" x 8" (45.7 cm x 20.3 cm) steel spare wheel. Spare not included with (ZW9) pickup box delete unless a spare tire is ordered. (Upgradeable to (PYS) 20" (50.8 cm) chrome aluminum wheels or (S9O) 20" (50.8 cm) polished aluminum wheels.)
- Bumper, front chrome
- Bumper, rear chrome with bumper CornerSteps (Requires (E63) pickup box.)
- CornerStep, rear bumper (Requires (E63) pickup box.) - Door handles, chrome
- Fog lamps, front, halogen- Glass, deep-tinted- Grille surround, chrome
- Headlamps, halogen projector
- Lamps, cargo area, cab mounted with switch on center switch bank
- Mirror caps, chrome- Moldings, bodyside, chrome
- Tailgate and bed rail protection caps, top
- Tailgate, EZ-Lift and Lower (Deleted with (ZW9) pickup box delete.)
- Tailgate, locking, utilizes same key as ignition and door (Deleted with (ZW9) pickup box delete.)
- Tire carrier lock keyed cylinder lock that utilizes same key as ignition and door (Not included when (ZW9) pickup box delete or (9J4) rear bumper delete is ordered.)
- Wheel, 18" x 8" (45.7 cm x 20.3 cm) full-size, steel spare Spare not included with (ZW9) pickup box delete unless a spare tire is ordered. (Requires 18" or 20" wheels and tires.)
- Wheelhouse liners, rear (Deleted with (ZW9) pickup box delete.)

### Safety

- Cruise control, steering wheel-mounted- Defogger, rear-window electric
- Door locks, power
- Floor covering, color-keyed carpeting with rubberized vinyl floor mats (Double Cab and Crew Cabs include second row floor mats)

- Remote Keyless Entry- Seat trim, Leather-appointed front seats
- Seating, heated driver and front passenger
- Seats, front 40/20/40 leather-appointed split-bench, 3-passenger with (KA1) heated seat cushions and seat backs. Includes 10-way power driver and front passenger seat adjusters, including driver/front passenger power recline, driver/front passenger power lumbar, 2- position driver memory and adjustable outboard head restraints. (Upgradeable to (AN3) front full-featured leather-appointed bucket seats.)
- Steering wheel audio controls
- Steering wheel, leather-wrapped with audio and cruise controls
- Universal Home Remote (Removed when (TRW) provisions for roof mounted lamp or (VYU) Snow Plow Prep Package is ordered.)
- Window, power, rear sliding with rear defogger
- Air conditioning, dual-zone automatic climate control
- Assist handle, front passenger and driver on A-pillars
- Driver Information Center, 4.2-inch diagonal color display includes driver personalization, warning messages and vehicle information
- Instrumentation, 6-gauge cluster featuring speedometer, fuel level, engine temperature, tachometer, voltage and oil pressure
- Mirror, inside rearview auto-dimming- Power outlet, 110-volt AC
- Remote vehicle starter system
- Seat, rear 60/40 folding bench (folds up), 3-passenger (includes child seat top tether anchor)
- Steering column, manual Tilt-Wheel and telescoping
- Theft-deterrent system, unauthorized entry
- Visors, driver and front passenger illuminated vanity mirrors
- Windows, power with driver express up and down and express down on all other windows

## Mechanical

- Engine, Vortec 6.0L Variable Valve Timing V8 SFI E85-compatible, FlexFuel capable of running on unleaded or up to 85% ethanol (360 hp [268.4 kW] @ 5400 rpm, 380 lb-ft of torque [515.0 N-m] @ 4200 rpm) with (E63) fleetside pickup box; (322 hp [240.1 kW] @ 4400 rpm, 380 lb-ft of torque [515.0 N-m] @ 4200 rpm) with (ZW9) pickup box delete (Does not include E85 capability with (ZW9) pickup box delete.)
- Recovery hooks, front, frame-mounted, black
- Transmission, 6-speed automatic, heavy-duty, electronically controlled with overdrive and tow/haul mode. Includes Cruise Grade Braking and Powertrain Grade Braking (Requires (L96) Vortec 6.0L V8 SFI engine or (LC8) 6.0L V8 SFI Gaseous engine.)
- Air cleaner, high-capacity- Alternator, 150 amps
- Battery, heavy-duty 720 cold-cranking amps/80 Amp-hr, maintenance-free with rundown protection and retained accessory power
- Brakes, 4-wheel antilock, 4-wheel disc with Duralife brake rotors
- Cooling, auxiliary external transmission oil cooler- Cooling, external engine oil cooler
- Differential, heavy-duty locking rear
- Exhaust, aluminized stainless-steel muffler and tailpipe
- Frame, fully-boxed, hydroformed front section
- GVWR, 9500 lbs. (4309 kg) (Requires (L96) Vortec 6.0L V8 SFI engine or (LC8) 6.0L V8 SFI Gaseous engine. Not available with CK25943 model.)
- Pickup box, Wideside
- Rear axle, 4.10 ratio (Requires (L96) Vortec 6.0L V8 SFI engine or (LC8) 6.0L V8 SFI Gaseous CNG (Compressed Natural Gas) engine.)
- Rear wheel drive- Steering, Recirculating Ball
- Suspension Package, Standard includes 51mm twin tube shock absorbers and 33mm front stabilizer bar
- Trailer brake controller, integrated (Standard with (E63) pickup box. Available to order with (ZW9) pickup box delete.)
- Trailering equipment Trailering hitch platform 2.5" with a 2.0" insert for HD, 7-wire harness with independent fused trailering circuits mated to a 7-way sealed connector to hook up parking lamps, backup lamps, right and left turn signals, an electric brake lead, battery and a ground. The trailer connector also includes the 4-way for use on trailers without brakes - park, brake/turn lamps (Will be deleted if (ZW9) pickup box delete or (9J4) rear bumper delete is ordered.) (Not available with (ZW9) pickup box delete or (9J4) rear bumper delete.)

DFWTruckCo.com LLC

DFWTruckCo.com LLC

View this car on our website at [dfwtruckco.com/7133974](http://dfwtruckco.com/7133974)

Website: [dfwtruckco.com](http://dfwtruckco.com)

Phone: 214-298-0620

Map: 8811 John W Carpenter Freeway, Dallas, TX 75247

