

nexgenmotorsutah.com  
801-874-3747  
986 N State St.  
Orem, UT 84057

Nexgen Motors

## 2017 Toyota Tacoma TRD Pro

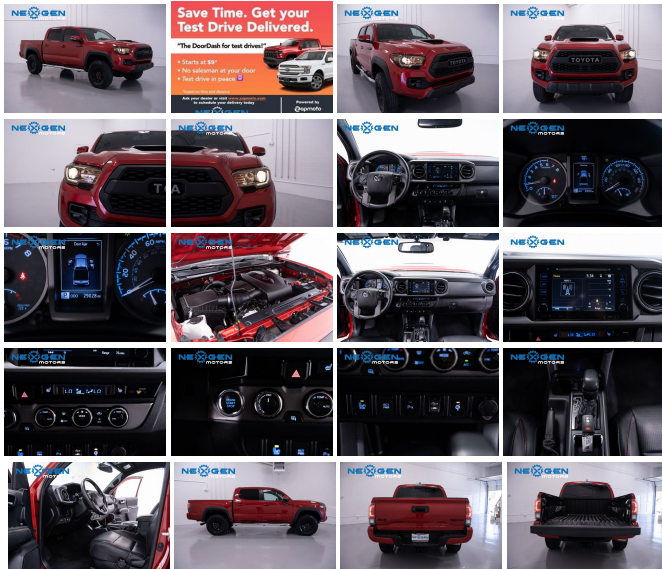
View this car on our website at [nexgenmotorsutah.com/7133573/ebrochure](http://nexgenmotorsutah.com/7133573/ebrochure)



Our Price **\$35,000**

**Specifications:**

**Year:** 2017  
**VIN:** 5TFCZ5AN1HX067073  
**Make:** Toyota  
**Stock:** 067073  
**Model/Trim:** Tacoma TRD Pro  
**Condition:** Pre-Owned  
**Body:** Pickup Truck  
**Exterior:** Barcelona Red Metallic  
**Engine:** Engine: 3.5L Atkinson-Cycle V6 -inc: VVT-iW wider intake and VVT-i exhaust  
**Interior:** Black Leather  
**Mileage:** 29,498  
**Drivetrain:** 4 Wheel Drive  
**Economy:** City 17 / Highway 20



2017 Toyota Tacoma TRD PRO branded title

- \$42,200 RETAIL VALUE
- LEATHER INTERIOR
- CRAWL CONTROL
- HEATED SEATS
- BLIND SPOT
- SAVE THOUSANDS WITH NEXGEN MOTORS!

- CALL 801-874-3747 TO TEST DRIVE TODAY!!

\*\* Too busy? We use a third party service called Zapmoto (think DoorDash but for test drives) to bring the car to you. Starts at \$9 for time and distance (refunded if purchase is made). Call us to arrange your test drive!

\*\* TRADES - We take trades! Whether you're local or on the other side of the country we'll take your trade! Give us a call, text or email with what you have!

\*\* SERVICE CONTRACT (Warranties) - We offer service coverage plans for your peace of mind, at an affordable price on your new car! You can choose to cover as little as just your engine and transmission to just about the entire car! Most of our vehicles are eligible for these service contracts because of our 3rd party inspections and extensive reconditioning we do on all our vehicles! Mileage and age restrictions may apply. Be sure to ask your sales team member for more details!

\*\* FINANCING - We offer some of the best lending options available in the country! We have many different lending partners that will finance both our local and out of state buyers from first time buyers to credits with BK history we can help get just about anyone in a car! Fill out our credit application to see how we can help you!

\*\* ONLINE SHOPPERS - YES, WE CAN HELP YOU TOO! We sell a good majority of our vehicles to customers who buy online then have their new car shipped to them; don't want to ship and want to take a road trip in your new car?? No problem! Fly into the SLC international airport and we'll have a ride waiting to pick you up! Ask your sales team member for more details!

## Our Location :



2017 Toyota Tacoma TRD Pro

Nexgen Motors - 801-874-3747 - View this car on our website at [nexgenmotorsutah.com/7133573/ebrochure](http://nexgenmotorsutah.com/7133573/ebrochure)

## Installed Options

### Interior

- Front Bucket Seats -inc: 4-way adjustable front seats w/driver lumbar support, heated front seats and TRD Pro logo in headrest
- Driver Seat- Passenger Seat
- 60-40 Folding Split-Bench Front Facing Flip Forward Cushion/Seatback Leather Rear Seat
- Manual Tilt/Telescoping Steering Column
- Gauges -inc: Speedometer, Odometer, Engine Coolant Temp, Tachometer, Trip Odometer and Trip Computer
- Power Rear Windows- Entune Selective Service Internet Access
- Leather/Metal-Look Steering Wheel- Front Cupholder- Rear Cupholder
- Remote Keyless Entry System- Smart Key w/Push Button Start- Cruise Control
- Dual Zone Automatic Climate Control- HVAC -inc: Underseat Ducts- Locking Glove Box
- Driver Foot Rest
- Interior Trim -inc: Cloth Instrument Panel Insert, Metal-Look Door Panel Insert, Metal-Look Console Insert and Chrome/Metal-Look Interior Accents
- Full Cloth Headliner- Leather/Metal-Look Gear Shifter Material
- Leatherette Door Trim Insert- TRD Pro Leather Trim- Day-Night Rearview Mirror
- Auto-Dimming Inside Rearview Mirror w/Compass -inc: HomeLink
- Full Floor Console w/Covered Storage, Mini Overhead Console w/Storage and 2 12V DC Power Outlets
- Front Map Lights- Fade-To-Off Interior Lighting- Full Carpet Floor Covering
- Blind Spot Monitor w/Rear Cross Traffic Alert- Rear Parking Assist Sonar
- Instrument Panel Bin, Interior Concealed Storage, Driver / Passenger And Rear Door Bins and 2nd Row Underseat Storage
- Power 1st Row Windows w/Driver 1-Touch Down- Delayed Accessory Power
- Power Door Locks- 120V/400W Deck Mounted AC Power- Trip Computer
- Outside Temp Gauge- Analog Appearance- Front Center Armrest
- Seats w/Leatherette Back Material
- Manual Anti-Whiplash Adjustable Front Head Restraints and Manual Adjustable Rear Head Restraints
- Perimeter Alarm- Engine Immobilizer- 2 12V DC Power Outlets- Air Filtration

---

## Exterior

- Wheels: 16" x 7" TRD Black Alloy -inc: aggressive wheel offset, widens the track +1.0" for front and rear
- Tires: P265/70R16 Goodyear Wrangler All-Terrain -inc: Kevlar reinforcement
- Regular Composite Box Style- Steel Spare Wheel
- Full-Size Spare Tire Stored Underbody w/Crankdown- Clearcoat Paint w/Badging
- Body-Colored Rear Step Bumper w/Black Rub Strip/Fascia Accent
- Body-Colored Front Bumper w/Black Rub Strip/Fascia Accent and 1 Tow Hook
- Black Side Windows Trim, Black Front Windshield Trim and Black Rear Window Trim
- Body-Colored Door Handles- ORP Black Overfenders
- Body-Colored Power Side Mirrors w/Manual Folding and Turn Signal Indicator
- Power Sliding Rear Window w/Privacy Glass- Variable Intermittent Wipers
- Fully Galvanized Steel Panels- Black Grille w/Body-Color Surround
- Tailgate Rear Cargo Access- Manual Tailgate/Rear Door Lock- Integrated Storage
- Halogen Headlamps- Rigid Industries LED fog lights -inc: instant on/off and driving lamps
- Projector-Beam Headlights -inc: black bezels, LED daytime running lights and auto on/off feature

---

## Safety

- Front Bucket Seats -inc: 4-way adjustable front seats w/driver lumbar support, heated front seats and TRD Pro logo in headrest
- Driver Seat- Passenger Seat
- 60-40 Folding Split-Bench Front Facing Flip Forward Cushion/Seatback Leather Rear Seat
- Manual Tilt/Telescoping Steering Column
- Gauges -inc: Speedometer, Odometer, Engine Coolant Temp, Tachometer, Trip Odometer and Trip Computer
- Power Rear Windows- Entune Selective Service Internet Access
- Leather/Metal-Look Steering Wheel- Front Cupholder- Rear Cupholder
- Remote Keyless Entry System- Smart Key w/Push Button Start- Cruise Control
- Dual Zone Automatic Climate Control- HVAC -inc: Underseat Ducts- Locking Glove Box
- Driver Foot Rest
- Interior Trim -inc: Cloth Instrument Panel Insert, Metal-Look Door Panel Insert, Metal-Look Console Insert and Chrome/Metal-Look Interior Accents
- Full Cloth Headliner- Leather/Metal-Look Gear Shifter Material
- Leatherette Door Trim Insert- TRD Pro Leather Trim- Day-Night Rearview Mirror
- Auto-Dimming Inside Rearview Mirror w/Compass -inc: HomeLink
- Full Floor Console w/Covered Storage, Mini Overhead Console w/Storage and 2 12V DC Power Outlets
- Front Map Lights- Fade-To-Off Interior Lighting- Full Carpet Floor Covering
- Blind Spot Monitor w/Rear Cross Traffic Alert- Rear Parking Assist Sonar
- Instrument Panel Bin, Interior Concealed Storage, Driver / Passenger And Rear Door Bins and 2nd Row Underseat Storage
- Power 1st Row Windows w/Driver 1-Touch Down - Delayed Accessory Power
- Power Door Locks- 120V/400W Deck Mounted AC Power- Trip Computer
- Outside Temp Gauge- Analog Appearance- Front Center Armrest
- Seats w/Leatherette Back Material
- Manual Anti-Whiplash Adjustable Front Head Restraints and Manual Adjustable Rear Head Restraints
- Perimeter Alarm- Engine Immobilizer- 2 12V DC Power Outlets- Air Filtration

---

## Mechanical

- Engine: 3.5L Atkinson-Cycle V6 -inc: VVT-iW wider intake and VVT-i exhaust
- Transmission: 6-Speed Manual -inc: clutch start-cancel switch- Axle Ratio: TBD
- TRD-Tuned Off-Road Suspension (TR) -inc: front TRD-tuned FOX 2.5 internal bypass coil-overs w/TRD coil springs, rear TRD-tuned FOX 2.5 internal bypass shocks w/TRD off-road leaf springs, 2.5" diameter aluminum bodies, FOX patented internal bypass technology, position-sensitive damping, internal floating pistons, hardened, oversized shock shafts are protected by redundant dust boots, improved suspension droop travel, bottom out resistance, front unique TRD-tuned springs provide 1" lift, rear TRD-tuned suspension w/progressive-rate leaf springs
- GVWR: 5,600 lbs- Transmission w/Oil Cooler- Electronic Transfer Case
- Part-Time Four-Wheel Drive- Driver Selectable Rear Locking Differential
- Engine Oil Cooler- Battery w/Run Down Protection- 130 Amp Alternator
- Class IV Towing Equipment -inc: Hitch and Trailer Sway Control - Trailer Wiring Harness
- Tow Package (TR) -inc: 4- and 7-pin connector w/converter, Class IV Hitch Receiver, Power Steering Cooler, Trailer Sway Control, 130 Amp Alternator, Engine Oil Cooler
- 1 Skid Plate- 1155# Maximum Payload- Front Anti-Roll Bar
- Hydraulic Power-Assist Speed-Sensing Steering- 21.1 Gal. Fuel Tank
- Single Stainless Steel Exhaust- Auto Locking Hubs- Double Wishbone Front Suspension
- Solid Axle Rear Suspension
- Front Disc/Rear Drum Brakes w/4-Wheel ABS, Front Vented Discs, Brake Assist, Hill Descent Control and Hill Hold Control

- Brake Actuated Limited Slip Differential

---

---

Nexgen Motors  
[nexgenmotorsutah.com](http://nexgenmotorsutah.com)  
801-874-3747  
986 N State St.  
Orem, UT 84057

© 2022 AutoRevo - All rights reserved. - Powered by [AutoRevo](#)