

2020 Chevrolet Express Passenger LT

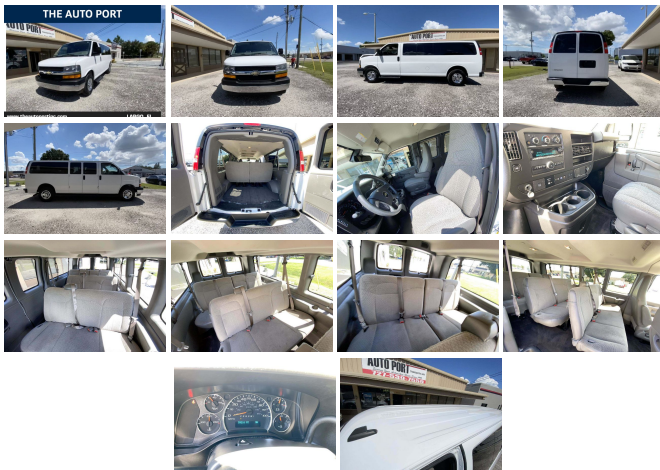
View this car on our website at theautoportinc.com/7133364/ebrochure



Our Wholesale Price **\$37,500**

Specifications:

Year:	2020
VIN:	1GAZGPF8L1167262
Make:	Chevrolet
Model/Trim:	Express Passenger LT
Condition:	Pre-Owned
Body:	Minivan/Van
Exterior:	White
Engine:	ENGINE, VORTEC 6.0L V8 SFI FLEXFUEL
Interior:	Gray Cloth
Mileage:	59,216
Drivetrain:	Rear Wheel Drive



2020 Chevrolet Express Passenger LT

The Auto Port Inc - 727-539-7559 - View this car on our website at theautoportinc.com/7133364/ebrochure

Our Location :



2020 Chevrolet Express Passenger LT

The Auto Port Inc - 727-539-7559 - View this car on our website [attheautoportinc.com/7133364/ebrochure](http://theautoportinc.com/7133364/ebrochure)

Installed Options

Interior

- Air conditioning, rear- Air conditioning, single-zone manual
- Assist handles, driver and right-front passenger
- Chevrolet Connected Access capable (Included and only available with (UE1) OnStar. Subject to terms. See onstar.com or dealer for details.)
- Compass, 8-point digital located in the Driver Information Center
- Console, deluxe with swing-out storage bin - Cruise control
- Cup holders, 3 on the engine console cover - Defogger, front and side windows
- Door locks, power with lock-out protection
- Driver Information Center includes fuel range, average speed, oil life, tire pressure monitoring, fuel used, ice warning, engine hours, average fuel economy, tachometer, and maintenance reminders. Compass and outside temperature available if equipped.
- Floor covering, full-floor color-keyed carpeting with front and rear rubberized vinyl floor mats (Not available with (Y3H) Paratransit Package.)
- Headliner, cloth- Heater, rear auxiliary
- Instrumentation, analog with speedometer, odometer with trip odometer, fuel level, voltmeter, engine temperature and oil pressure
- Lighting, auxiliary with reading and underhood lights
- Lighting, interior with 2 dome lights defeat switch and door handle-activated switches
- Mirror, inside rearview, with Rear Vision Camera display- Oil life monitor
- Power outlet, 120-volt
- Power outlets 2 auxiliary on engine console cover with covers, 12-volt
- Remote Keyless Entry with 2 transmitters and remote panic button
- Seating, 12-passenger, (2-3-3-4 seating configuration) 4-passenger seat is a 50/50 split, 2-piece configuration
- Seats, front bucket with Custom Cloth trim head restraints and inboard armrests (Requires (93G) interior trim. Includes (BA3) console with swing-out storage bin. When ordering a seating arrangement that includes rear seats, includes rear bench seats with Custom Cloth trim. Head restraints are not available on rear bench seats.)
- Steering column, Tilt-Wheel
- Steering wheel steel sleeve column with theft-deterrent locking feature, Black

- Theft Alarm notification requires paid plan, working electrical system, cell reception, GPS signal, armed GM factory-installed theft-deterrent system, contact method on file and enrollment to receive alerts. Message and data rates may apply. See onstar.com for details and limitations (Included and only available with (ATG) Remote Keyless Entry. Requires (UE1) OnStar.)
- Theft-deterrent system, vehicle, PASS-Key III
- Visors, driver and front passenger, padded with cloth trim and dual vanity mirrors, illuminated on passenger-side
- Warning tones, headlamp on and key-in-ignition
- Windows, power (Included with (ZQ2) Power Convenience Package.)

Exterior

- Body, standard
- Bumpers, front and rear chrome with step-pad (Included with (ZR7) Chrome Appearance Package.)
- Chrome Appearance Package- Door, swing-out passenger-side, 60/40 split
- Glass, Solar-Ray deep-tinted (all windows except light-tinted glass on windshield and driver- and front passenger-side glass)
- Glass, enhanced-technology, rearmost side windows. 3-layer special glass is designed to help reduce the risk of ejection during a crash
- Glass, full-body window package (Includes (A18) swing-out rear cargo door window glass and (A19) swing-out side door window glass.)
- Glass, swing-out rear cargo door windows- Glass, swing-out side door windows
- Grille, chrome (Included and only available with (ZR7) Chrome Appearance Package.)
- Headlamps, dual halogen composite- License plate kit, front
- Mirrors, outside manual, Black- Tire, spare LT245/75R16 all-season, blackwall
- Tires, front LT245/75R16E all-season, blackwall
- Tires, rear LT245/75R16E all-season, blackwall- Wheel trim, chrome center cap
- Wheels, 4 - 16" x 6.5" (40.6 cm x 16.5 cm) steel includes Gray center caps and steel spare
- Wipers, front intermittent wet-arm with pulse washers

Safety

- Air conditioning, rear- Air conditioning, single-zone manual
- Assist handles, driver and right-front passenger
- Chevrolet Connected Access capable (Included and only available with (UE1) OnStar. Subject to terms. See onstar.com or dealer for details.)
- Compass, 8-point digital located in the Driver Information Center
- Console, deluxe with swing-out storage bin- Cruise control
- Cup holders, 3 on the engine console cover - Defogger, front and side windows
- Door locks, power with lock-out protection
- Driver Information Center includes fuel range, average speed, oil life, tire pressure monitoring, fuel used, ice warning, engine hours, average fuel economy, tachometer, and maintenance reminders. Compass and outside temperature available if equipped.
- Floor covering, full-floor color-keyed carpeting with front and rear rubberized vinyl floor mats (Not available with (Y3H) Paratransit Package.)
- Headliner, cloth- Heater, rear auxiliary
- Instrumentation, analog with speedometer, odometer with trip odometer, fuel level, voltmeter, engine temperature and oil pressure
- Lighting, auxiliary with reading and underhood lights
- Lighting, interior with 2 dome lights defeat switch and door handle-activated switches
- Mirror, inside rearview, with Rear Vision Camera display- Oil life monitor
- Power outlet, 120-volt
- Power outlets 2 auxiliary on engine console cover with covers, 12-volt
- Remote Keyless Entry with 2 transmitters and remote panic button
- Seating, 12-passenger, (2-3-3-4 seating configuration) 4-passenger seat is a 50/50 split, 2-piece configuration
- Seats, front bucket with Custom Cloth trim head restraints and inboard armrests (Requires (93G) interior trim. Includes (BA3) console with swing-out storage bin. When ordering a seating arrangement that includes rear seats, includes rear bench seats with Custom Cloth trim. Head restraints are not available on rear bench seats.)
- Steering column, Tilt-Wheel
- Steering wheel steel sleeve column with theft-deterrent locking feature, Black
- Theft Alarm Notification requires paid plan, working electrical system, cell reception, GPS signal, armed GM factory-installed theft-deterrent system, contact method on file and enrollment to receive alerts. Message and data rates may apply. See onstar.com for details and limitations (Included and only available with (ATG) Remote Keyless Entry. Requires (UE1) OnStar.)
- Theft-deterrent system, vehicle, PASS-Key III
- Visors, driver and front passenger, padded with cloth trim and dual vanity mirrors, illuminated on passenger-side
- Warning tones, headlamp on and key-in-ignition
- Windows, power (Included with (ZQ2) Power Convenience Package.)

Mechanical

- Alternator, 150 amps

- Battery, 600 cold-cranking amps, maintenance-free with rundown protection and retained accessory power
- Brakes, 4-wheel antilock, 4-wheel disc
- Cooling, External Engine Oil Cooler (Not available with (LWN) 2.8L Duramax Turbo-Diesel engine.)
- Engine, 4.3L V6 with Direct Injection and Variable Valve Timing, includes aluminum block construction (276 hp [206 kW] @ 5200 rpm, 298 lb-ft of torque [404 Nm] @ 3900 rpm) (Reference the Engine/Axle page for availability.)
- Exhaust, aluminized stainless-steel muffler and tailpipe- Frame, ladder-type
- Fuel tank capacity, mid-frame and approximately 31 gallons (117.3L)
- GVWR, 9600 lbs. (4354 kg) (Reference the Engine/Axle page for availability.)
- Rear axle, 3.42 ratio (Reference the Engine/Axle page for availability.) - Rear-wheel drive
- Steering, power- Suspension, front independent with coil springs and stabilizer bar
- Suspension, rear hypoid drive axle with multi-leaf springs
- Tow/haul mode selector, instrument panel-mounted
- Transmission oil cooler, external (Not available with (LWN) 2.8L Duramax Turbo-Diesel engine.)
- Transmission, 8-speed automatic, electronically controlled with overdrive and tow/haul mode. Includes Cruise Grade Braking and Powertrain Grade Braking (Requires (LV1) 4.3L V6 SIDI engine.)

Option Packages

Factory Installed Packages

ENGINE, VORTEC 6.0L V8 SFI
 FLEXFUEL
 (341 hp [254.3 kW] @ 5400 rpm, \$995
 373 lb-ft of torque [503.6 N-m]
 @ 4200 rpm)

Option Packages Total
 \$995

The Auto Port Inc
theautoportinc.com
 727-539-7559
 6537 126th Ave N
 Largo, Florida 33773

© 2022 AutoRevo - All rights reserved. - Powered by AutoRevo