

# 2016 Honda Pilot Elite

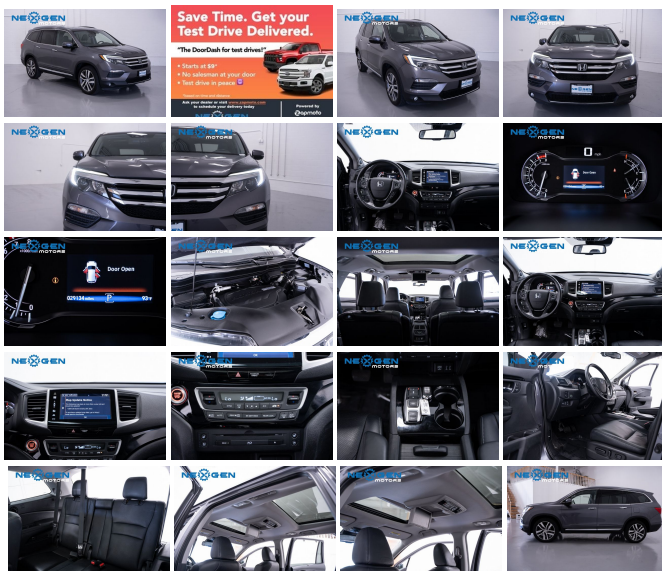
View this car on our website at [nexgenmotorsutah.com/7132100/ebrochure](http://nexgenmotorsutah.com/7132100/ebrochure)



Our Price **\$27,000**

## Specifications:

|                    |                                      |
|--------------------|--------------------------------------|
| <b>Year:</b>       | 2016                                 |
| <b>VIN:</b>        | 5FN9F6H04GB038657                    |
| <b>Make:</b>       | Honda                                |
| <b>Stock:</b>      | 038657                               |
| <b>Model/Trim:</b> | Pilot Elite                          |
| <b>Condition:</b>  | Pre-Owned                            |
| <b>Body:</b>       | SUV                                  |
| <b>Exterior:</b>   | Modern Steel Metallic                |
| <b>Engine:</b>     | Engine: 3.5L V6 24-Valve SOHC i-VTEC |
| <b>Interior:</b>   | Black Leather                        |
| <b>Mileage:</b>    | 29,125                               |
| <b>Drivetrain:</b> | All Wheel Drive                      |
| <b>Economy:</b>    | City 19 / Highway 26                 |



2016 Honda Pilot Elite

Nexgen Motors - 801-874-3747 - View this car on our website at [nexgenmotorsutah.com/7132100/ebrochure](http://nexgenmotorsutah.com/7132100/ebrochure)

## Our Location :



2016 Honda Pilot Elite

Nexgen Motors - 801-874-3747 - View this car on our website at [nexgenmotorsutah.com/7132100/ebrochure](http://nexgenmotorsutah.com/7132100/ebrochure)

## Installed Options

### Interior

- Heated & Ventilated Front Bucket Seats -inc: 10-way power driver's seat adjustment w/power lumbar support w/2-position memory, 4-way power passenger's seat adjustment, 1-touch 2nd-row seats, heated 2nd-row captain's chairs and head restraints at all seating positions
- Driver Seat- Passenger Seat
- Front Facing Manual Reclining Fold Forward Seatback Rear Seat w/Manual Fore/Aft
- Front Center Armrest and Rear Seat Mounted Armrest w/Storage
- Manual Tilt/Telescoping Steering Column
- Gauges -inc: Speedometer, Odometer, Engine Coolant Temp, Tachometer, Trip Odometer and Trip Computer
- Power Rear Windows, Fixed 3rd Row Windows and w/Manual Sun Blinds
- Fixed 60-40 Split-Bench 3rd Row Seat Front and Manual Fold Into Floor
- Heated Leather/Metal-Look Steering Wheel- Front Cupholder- Rear Cupholder
- Compass- Valet Function
- Remote Keyless Entry w/Integrated Key Transmitter, 4 Door Curb/Courtesy, Illuminated Entry and Panic Button
- Proximity Key For Doors And Push Button Start
- Remote Releases -inc: Power Cargo Access and Mechanical Fuel
- HomeLink Garage Door Transmitter- Cruise Control w/Steering Wheel Controls
- Distance Pacing- HVAC -inc: Underseat Ducts, Headliner/Pillar Ducts and Console Ducts
- Rear HVAC w/Separate Controls
- Voice Activated Dual Zone Front Automatic Air Conditioning
- Illuminated Locking Glove Box- Driver Foot Rest
- Interior Trim -inc: Metal-Look Instrument Panel Insert and Chrome/Metal-Look Interior Accents
- Full Cloth Headliner- Leather Door Trim Insert- Leather/Metal-Look Gear Shifter Material
- Perforated Leather-Trimmed Seats
- Driver And Passenger Visor Vanity Mirrors w/Driver And Passenger Illumination
- Day-Night Auto-Dimming Rearview Mirror
- Full Floor Console w/Covered Storage. Mini Overhead Console w/Storage. Conversation

- Mirror, 3 12V DC Power Outlets and 1 120V AC Power Outlet
- Front And Rear Map Lights- Fade-To-Off Interior Lighting
- Full Carpet Floor Covering -inc: Carpet Front And Rear Floor Mats - Carpet Floor Trim
- Cargo Area Concealed Storage- Trunk/Hatch Auto-Latch- Cargo Space Lights
- FOB Controls -inc: Cargo Access, Windows, Sunroof/Convertible Roof and Remote Engine Start
- Memory Settings -inc: Door Mirrors
- Honda Satellite-Linked Navigation System -inc: voice recognition and Honda HD digital traffic
- Instrument Panel Bin, Interior Concealed Storage, Driver / Passenger And Rear Door Bins
- Power 1st Row Windows w/Driver And Passenger 1-Touch Up/Down
- Delayed Accessory Power- Power Door Locks w/Autolock Feature- Systems Monitor
- Trip Computer- Analog Appearance- Outside Temp Gauge- 2 Seatback Storage Pockets
- Perimeter Alarm- Immobilizer- Air Filtration- 3 12V DC Power Outlets
- 3 12V DC Power Outlets and 1 120V AC Power Outlet

## Exterior

- Wheels: 20" Alloy- Tires: P245/50R20 102H AS- Wheels w/Machined Accents
- Steel Spare Wheel- Compact Spare Tire Stored Underbody w/Crankdown
- Clearcoat Paint
- Express Open/Close Sliding And Tilting Glass 1st Row Sunroof w/Sunshade
- Fixed Glass 2nd Row Sunroof w/Power Sunshade
- Body-Colored Front Bumper w/Black Rub Strip/Fascia Accent
- Body-Colored Rear Bumper w/Black Rub Strip/Fascia Accent
- Black Bodyside Cladding and Black Wheel Well Trim
- Chrome Side Windows Trim and Black Front Windshield Trim - Chrome Door Handles
- Body-Colored Power w/Tilt Down Heated Side Mirrors w/Manual Folding and Turn Signal Indicator
- Fixed Rear Window w/Fixed Interval Wiper and Defroster - Deep Tinted Glass
- Front Windshield -inc: Sun Visor Strip
- Speed Sensitive Rain Detecting Variable Intermittent Wipers
- Galvanized Steel/Aluminum Panels- Lip Spoiler- Chrome Grille
- Power Liftgate Rear Cargo Access
- Tailgate/Rear Door Lock Included w/Power Door Locks- Roof Rack Rails Only
- LED Brakelights- Front Fog Lamps- Headlights-Automatic Highbeams
- Auto On/Off Projector Beam Led Low Beam Daytime Running Auto High-Beam Headlamps w/Delay-Off
- Laminated Glass

## Safety

- Heated & Ventilated Front Bucket Seats -inc: 10-way power driver's seat adjustment w/power lumbar support w/2-position memory, 4-way power passenger's seat adjustment, 1-touch 2nd-row seats, heated 2nd-row captain's chairs and head restraints at all seating positions
- Driver Seat- Passenger Seat
- Front Facing Manual Reclining Fold Forward Seatback Rear Seat w/Manual Fore/Aft
- Front Center Armrest and Rear Seat Mounted Armrest w/Storage
- Manual Tilt/Telescoping Steering Column
- Gauges -inc: Speedometer, Odometer, Engine Coolant Temp, Tachometer, Trip Odometer and Trip Computer
- Power Rear Windows, Fixed 3rd Row Windows and w/Manual Sun Blinds
- Fixed 60-40 Split-Bench 3rd Row Seat Front and Manual Fold Into Floor
- Heated Leather/Metal-Look Steering Wheel- Front Cupholder- Rear Cupholder
- Compass- Valet Function
- Remote Keyless Entry w/Integrated Key Transmitter, 4 Door Curb/Courtesy, Illuminated Entry and Panic Button
- Proximity Key For Doors And Push Button Start
- Remote Releases -Inc: Power Cargo Access and Mechanical Fuel
- HomeLink Garage Door Transmitter- Cruise Control w/Steering Wheel Controls
- Distance Pacing- HVAC -inc: Underseat Ducts, Headliner/Pillar Ducts and Console Ducts
- Rear HVAC w/Separate Controls
- Voice Activated Dual Zone Front Automatic Air Conditioning
- Illuminated Locking Glove Box- Driver Foot Rest
- Interior Trim -inc: Metal-Look Instrument Panel Insert and Chrome/Metal-Look Interior Accents
- Full Cloth Headliner- Leather Door Trim Insert- Leather/Metal-Look Gear Shifter Material
- Perforated Leather-Trimmed Seats
- Driver And Passenger Visor Vanity Mirrors w/Driver And Passenger Illumination
- Day-Night Auto-Dimming Rearview Mirror
- Full Floor Console w/Covered Storage, Mini Overhead Console w/Storage, Conversation Mirror, 3 12V DC Power Outlets and 1 120V AC Power Outlet
- Front And Rear Map Lights- Fade-To-Off Interior Lighting

- Full Carpet Floor Covering -inc: Carpet Front And Rear Floor Mats - Carpet Floor Trim
- Cargo Area Concealed Storage- Trunk/Hatch Auto-Latch- Cargo Space Lights
- FOB Controls -inc: Cargo Access, Windows, Sunroof/Convertible Roof and Remote Engine Start
- Memory Settings -inc: Door Mirrors
- Honda Satellite-Linked Navigation System -inc: voice recognition and Honda HD digital traffic
- Instrument Panel Bin, Interior Concealed Storage, Driver / Passenger And Rear Door Bins
- Power 1st Row Windows w/Driver And Passenger 1-Touch Up/Down
- Delayed Accessory Power- Power Door Locks w/Autolock Feature- Systems Monitor
- Trip Computer- Analog Appearance- Outside Temp Gauge- 2 Seatback Storage Pockets
- Perimeter Alarm- Immobilizer- Air Filtration- 3 12V DC Power Outlets
- 3 12V DC Power Outlets and 1 120V AC Power Outlet

---

## Mechanical

- Engine: 3.5L V6 24-Valve SOHC i-VTEC
- Transmission: 9-Speed Automatic -inc: Shift-By-Wire (SBW) and paddle shifters
- 4.334 Axle Ratio- GVWR: 5,842 lbs- Engine Auto Stop-Start Feature
- Transmission w/Driver Selectable Mode- Automatic Full-Time All-Wheel- 1 Skid Plate
- Gas-Pressurized Shock Absorbers- Front And Rear Anti-Roll Bars
- Electric Power-Assist Speed-Sensing Steering- 19.5 Gal. Fuel Tank
- Single Stainless Steel Exhaust w/Chrome Tailpipe Finisher - Permanent Locking Hubs
- Strut Front Suspension w/Coil Springs- Multi-Link Rear Suspension w/Coil Springs
- 4-Wheel Disc Brakes w/4-Wheel ABS, Front Vented Discs, Brake Assist and Hill Hold Control

---

Nexgen Motors

[nexgenmotorsutah.com](http://nexgenmotorsutah.com)

801-874-3747

986 N State St.

Orem, UT 84057

© 2022 AutoRevo - All rights reserved. - Powered by AutoRevo