

# 2012 Ford FORD F550 SUPER CAB BUCKET TRUCK

Call - Joe (847) 257-3221

View this car on our website at [lemongrovetrucks.com/7131834/ebrochure](http://lemongrovetrucks.com/7131834/ebrochure)



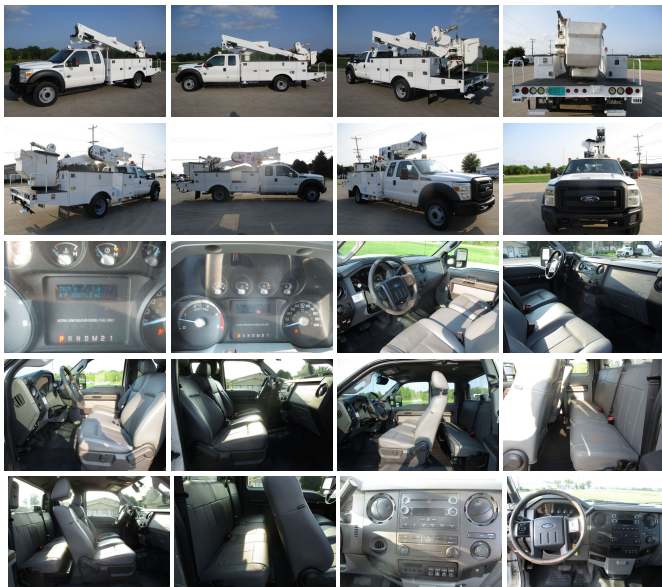
Our Price Only **\$87,500**

## Specifications:

|                    |   |
|--------------------|---|
| <b>Year:</b>       | 2012  |
| <b>VIN:</b>        | 1FD0X5GT2CEC71671                               |
| <b>Make:</b>       | Ford  |
| <b>Model/Trim:</b> | FORD F550 SUPER CAB BUCKET TRUCK                |
| <b>Condition:</b>  | Pre-Owned                                       |
| <b>Exterior:</b>   | White   |
| <b>Engine:</b>     | 6.7L OHV 32-VALVE V8 POWER STROKE DIESEL ENGINE |
| <b>Interior:</b>   | Gray  |
| <b>Mileage:</b>    | 85,071  |
| <b>Drivetrain:</b> | Rear Wheel Drive                                |
| <b>Truck Type:</b> | Bucket, Boom                                    |

2012 FORD F550 BUCKET TRUCK, BRAND NEW FORD ENGINE WITH 2 YEAR FORD FACTORY WARRANTY, MATERIAL HANDLER, 4X2, AUTO, 85,071 MI, GVW 19,500, FT GVW 7,000, RR GVW 14,706, 6.7 DIESEL, PLATFORM LENGTH 11FT, ALTEC AT40-MH 45FT WORKING HEIGHT SERIAL #0912CZ0934, WHEEL BASE 186IN, CAB TO AXLE 84IN, OVERALL HEIGHT 10FT 2IN, TIRE SIZE 225X70X10.5, OVERALL LENGTH 316IN, OVERALL WIDTH 96IN, PW, PL, CRUISE, A/C, CD PLAYER, AM/FM, OUTRIGGERS.

IF THIS TRUCK MEETS YOUR NEEDS TODAY CALL TODAY BECAUSE IT WILL BE GONE!



2012 Ford FORD F550 SUPER CAB BUCKET TRUCK

Lemon Grove Trucks - (847) 257-3221 - View this car on our website at [lemongrovetrucks.com/7131834/ebrochure](http://lemongrovetrucks.com/7131834/ebrochure)

## Our Location :



2012 Ford FORD F550 SUPER CAB BUCKET TRUCK

Lemon Grove Trucks - (847) 257-3221 - View this car on our website at [lemongrovetrucks.com/7131834/ebrochure](http://lemongrovetrucks.com/7131834/ebrochure)

## Installed Options

### Interior

- 11.5" day/night rearview mirror- Auxiliary pwr point- Black vinyl full floor covering
- Black vinyl steering wheel
- Color-coordinated door trim panel -inc: armrest, grab handle, reflector
- Color-coordinated instrument panel -inc: glove box, (4) air registers w/positive shutoff, pwr point & (4) upfitter switches
- Color-coordinated molded cloth headliner- Color-coordinated scuff plates
- Color-coordinated vinyl sun visors -inc: LH pocket, RH insert - Dash-top tray
- Door activated dome lamp w/delay, I/P switch operation
- Dual color-coordinated coat hooks- Dual front grab handles- Dual map lights
- Front passenger roof ride handles
- HD vinyl 40/20/40 split bench seat -inc: center armrest, cup holder, storage
- I/P mounted dual cup holders- Inside hood release
- Instrumentation -inc: multifunction switch message center w/ice blue lighting
- Manual air conditioning- Manual driver lumbar support- Oil minder system
- Secondary glove box- Tilt & telescoping steering wheel/column
- Vinyl rear 60/40 fold-up bench seat

### Exterior

- 19.5" argent painted steel wheels
- 225/70R19.5G BSW tires -inc: (2) front all-season & (4) rear all-season tires
- 3-blink lane change signal- Black door handles- Black painted grille
- Black painted steel front bumper w/grained MIC top cover - Dual beam jewel headlights
- Fixed rear window- Flip-out rear quarter windows- Front fender vents
- Front license plate bracket
- Manual telescoping trailer tow mirrors w/manual glass & 2-way fold- Roof clearance lights
- Solar tinted glass- Underhood service light- Variable intermittent windshield wipers

### Safety

- 11.5" day/night rearview mirror- Auxiliary pwr point- Black vinyl full floor covering
- Black vinyl steering wheel
- Color-coordinated door trim panel -inc: armrest, grab handle, reflector
- Color-coordinated instrument panel -inc: glove box, (4) air registers w/positive shutoff, pwr point & (4) upfitter switches
- Color-coordinated molded cloth headliner- Color-coordinated scuff plates
- Color-coordinated vinyl sun visors -inc: LH pocket, RH insert - Dash-top tray
- Door activated dome lamp w/delay, I/P switch operation
- Dual color-coordinated coat hooks- Dual front grab handles- Dual map lights
- Front passenger roof ride handles
- HD vinyl 40/20/40 split bench seat -inc: center armrest, cup holder, storage
- I/P mounted dual cup holders- Inside hood release
- Instrumentation -inc: multifunction switch message center w/ice blue lighting
- Manual air conditioning- Manual driver lumbar support- Oil minder system
- Secondary glove box- Tilt & telescoping steering wheel/column
- Vinyl rear 60/40 fold-up bench seat

## Mechanical

- (2) front tow hooks- (40) gallon aft-axle fuel tank- 155-amp HD alternator
- 162" wheelbase- 4.88 axle ratio (REQ: 99Y Engine)
- 6.8L SOHC EFI Triton 30-valve V10 engine
- 7-wire trailer tow harness w/relays, blunt cut & labeled- 78 amp/hr 750 CCA battery
- Dual rear wheels- Front/rear stabilizer bars- HD gas shock absorbers
- Mono-beam front axle w/coil spring suspension- Pwr 4-wheel disc brakes w/hydro boost
- Pwr steering w/steering damper- Rear auxiliary springs- Rear wheel drive
- Stationary elevated idle control (SEIC)
- TorqShift 5-speed automatic transmission w/OD -inc: tow/haul mode (REQ: 99Y Engine)

## Option Packages

### Factory Installed Packages

6.7L OHV 32-VALVE V8 POWER STROKE DIESEL ENGINE  
-inc: 200-amp HD alternator, dual 78 amp/hr 750 CCA batteries, Intelligent Oil Life Minder, diesel exhaust fuel tank, split-shaft calibration compatibility

\$7,610

Option Packages Total  
\$7,610

Lemon Grove Trucks  
[lemongrovetrucks.com](http://lemongrovetrucks.com)  
(847) 257-3221

8595 Pyott Rd.  
Lake In The Hills, IL 60156

© 2022 AutoRevo - All rights reserved. - Powered by AutoRevo