



## 2003 Dodge Durango SLT V8 3rd Row

**Our Price \$6,985**

View this vehicle on our website at [importsandmore.net](http://importsandmore.net)

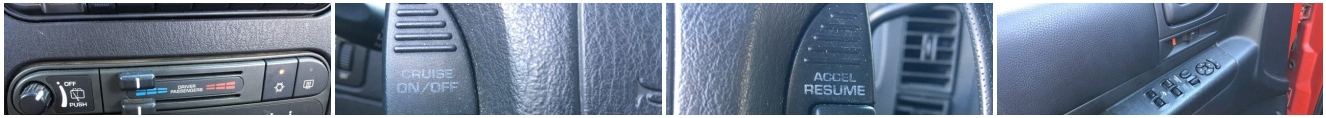


(865) 988-4133

10504 Highway 11 E, Lenoir City, TN 37772

Photos  
Details  
Contact





## Specifications:

<b>Year:</b>	2003
<b>VIN:</b>	1D4HR48Z93F505316
<b>Make:</b>	Dodge
<b>Model/Trim:</b>	Durango SLT V8 3rd Row
<b>Condition:</b>	Pre-Owned
<b>Body:</b>	SUV
<b>Exterior:</b>	Flame Red
<b>Engine:</b>	5.9L (360) MPI V8 "MAGNUM" ENGINE
<b>Interior:</b>	Dark Slate Gray Leather
<b>Transmission:</b>	AUTOMATIC
<b>Mileage:</b>	73,415
<b>Drivetrain:</b>	Rear Wheel Drive
<b>Economy:</b>	City 13 / Highway 18

## Vehicle Description

CASH SPECIAL!!! YES, a 73000-MILE DURANGO SLT with 3rd Row Seat under \$7000 with NO Dealer Doc Fees, Automatic, DUAL AC, all power, factory wheels! cruise, CD/CASSETTE stereo, EXCELLENT FIRESTONE tires and EXCELLENT brakes, Drives great, very fresh car, RED WITH GRAY LEATHER interior, CARFAX/ AUTOCHECK CERTIFIED, ASE inspection and road test, NOTE: PAINT IS FADED OUT, SOLD AS-IS, Come see a great SUV at this price point! Serving you since 1998, A+ member of Better Business Bureau

## Installed Options

### Interior

- Cloth seat trim
- Electronic AM/FM stereo radio w/cassette, compact disc, CD changer control
- Front courtesy/map lamps- Front dual zone climate control
- Front high-back bucket seats- Light group-inc: glove box & map/dome reading lamps
- Remote keyless entry- (4) speakers
- 2nd row 40/20/40 split bench seat w/fold & tumble design
- 3rd row 2-passenger folding bench seat- 6-way pwr driver seat- Cargo tie-down loops
- Cloth door trim panels w/map pocket- Driver & passenger assist handles
- Dual sunvisors w/covered visor vanity mirrors- Floor console- Front floor mats
- Front/rear pwr outlet- Illuminated entry- Liftgate flood lamps- Oil level sensor
- Pwr door locks- Pwr windows w/driver one-touch- Rear air conditioning w/heater
- Rear compartment storage tray- Rear heater- Rear window defroster- Security alarm
- Sentry Key theft deterrent system- Speed control- Tilt steering column
- Warning chimes-inc: key-in-ignition, seat belt, headlamps-on
- Warning lamps-inc: door/liftgate ajar, low washer fluid

### Exterior

- Black 5" x 7" pwr mirrors- Variable intermittent rear window wiper/washer
- Variable intermittent windshield wipers- Body-color body-side moldings
- Body-color front/rear fascia- Bright grille
- Deep tint sunscreen glass on all windows behind B-pillar- Fog lamps
- Halogen headlamps- Light-tinted windshield & front door glass- Rear wheelhouse liners
- Roof rack- Wheel flares

### Safety

- Cloth seat trim
- Electronic AM/FM stereo radio w/cassette, compact disc, CD changer control
- Front courtesy/map lamps- Front dual zone climate control
- Front high-back bucket seats- Light group-inc: glove box & map/dome reading lamps
- Remote keyless entry- (4) speakers
- 2nd row 40/20/40 split bench seat w/fold & tumble design
- 3rd row 2-passenger folding bench seat- 6-way pwr driver seat- Cargo tie-down loops
- Cloth door trim panels w/map pocket- Driver & passenger assist handles
- Dual sunvisors w/covered visor vanity mirrors- Floor console- Front floor mats
- Front/rear pwr outlet- Illuminated entry- Liftgate flood lamps- Oil level sensor
- Pwr door locks- Pwr windows w/driver one-touch- Rear air conditioning w/heater
- Rear compartment storage tray- Rear heater- Rear window defroster- Security alarm
- Sentry Key theft deterrent system- Speed control- Tilt steering column
- Warning chimes-inc: key-in-ignition, seat belt, headlamps-on
- Warning lamps-inc: door/liftgate ajar, low washer fluid

### Mechanical

- 4.7L (287) SOHC SMPI V8 "Magnum" engine- P245/70R16 on-off road SBR OWL tires
- Rear anti-lock brakes- (4) 16" x 8" cast aluminum wheels- 25 gallon fuel tank
- 3.55 axle ratio- 5-speed automatic transmission w/OD-inc: alternate 2nd gear shift ratio
- 6050# GVWR- Brake/transmission shift interlock- Front stabilizer bar
- Full-size spare tire w/steel wheel, winch carrier- HD front/rear shock absorbers
- HD suspension- Pwr 4-wheel disc brakes- Rear stabilizer bar- Rear wheel drive
- Variable-assist pwr rack & pinion steering

## Option Packages

### Factory Installed Packages

5.9L (360) MPI V8 "MAGNUM" ENGINE	\$595
LEATHER HIGH-BACK FRONT BUCKET SEATS	\$795
Option Packages Total	\$1,390

Imports and More Inc

Imports and More Inc

View this car on our website at [importsandmore.net/7131047](http://importsandmore.net/7131047)

Website: [importsandmore.net](http://importsandmore.net)

Phone: (865) 988-4133

Map: [10504 Highway 11 E, Lenoir City, TN 37772](#)

