



2022 Cadillac Escalade Premium Luxury

Website Price \$103,995

View this vehicle on our website at [autoparkdallas.com](https://www.autoparkdallas.com)



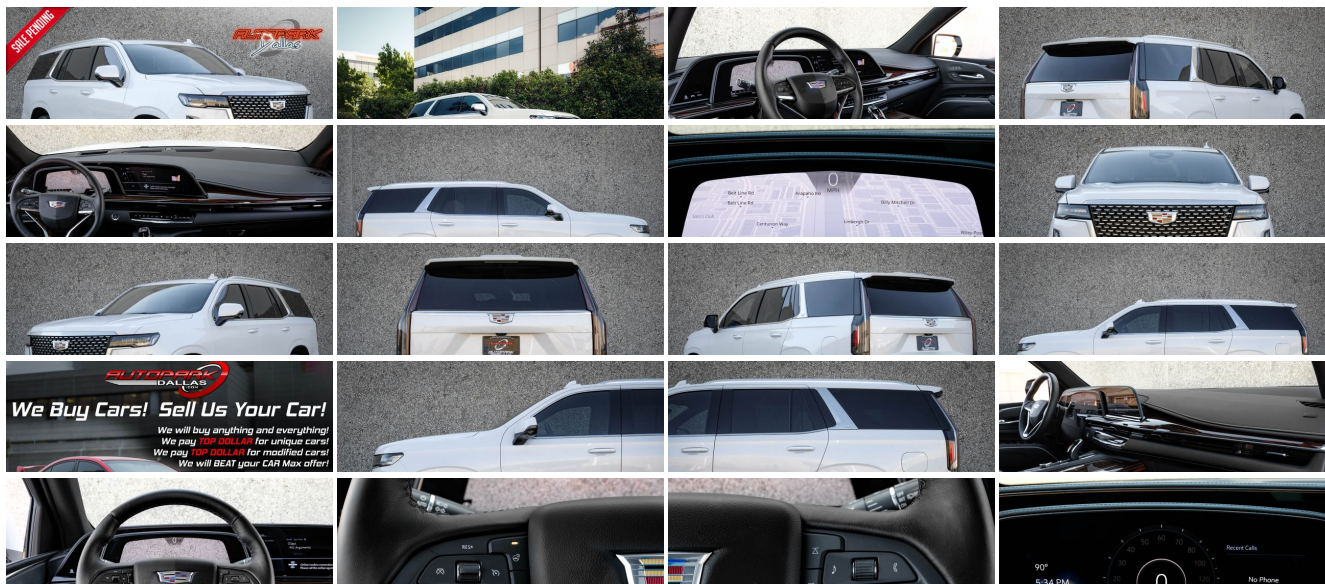
(214) 945-2601

2061 S Stemmons Fwy , Lewisville, TX 75067

Photos

Details

Contact



Specifications:

Year:	2022
VIN:	1GYS3BKL6NR346067
Make:	Cadillac
Model/Trim:	Escalade Premium Luxury
Condition:	Pre-Owned
Body:	SUV
Exterior:	Crystal White Tricoat
Engine:	ENGINE, 6.2L V8 WITH DYNAMIC FUEL MANAGEMENT
Interior:	Black Leather
Mileage:	1,371
Drivetrain:	Rear Wheel Drive
Economy:	City 14 / Highway 19

Vehicle Description

AutoPark Dallas is thrilled to offer you this Sharp Crystal White Metallic 2022 Cadillac Escalade for sale! Skip the 9-month wait you'd have if you ordered new and come snag this beauty, which is practically brand new with only 1300 miles! Nothing is more eye-catching and noticeable than Cadillac's crisp White exterior and with our Escalade here at APD there is plenty to enjoy when sitting behind the wheel! Straight from the factory, it is equipped with all the right options like Adaptive Cruise Control, and Optioned in a beautiful color combo built with the highest quality finishes! DO! NOT! HESITATE!!! If you're looking for a comfortable SUV or the next family vehicle, then come check out this Escalade parked here in our indoor 16,000 Sq Ft Showroom located in Dallas , Texas amongst our inventory of 100+ other Unique / Modified and Luxury Vehicles!

2022 Cadillac Escalade Sport

ONLY 1300 Miles!!

*** 1 Previous Owners !***

*** Clean CarFax !***

*** Driver Assist Tech Package !***

Crystal White Tricoat Exterior

Jet Black Leather Exterior

Hands Free Bluetooth

Navigation w/ Voice Command

Heated & Cooled Front Row Seats

Heated Second Row Seats

Blind Spot Monitoring

Adaptive Cruise Control

Lane Departure Warning

Back-Up Camera w/ Bird-Eye View

Front & Rear Reverse Sensors

Push Button Start
Comfort Access Keyless Entry
Remote Start-Up
Bluetooth Audio Streaming
Steering Wheel Mounted Controls
Heated Steering Wheel
Daytime Running Lights
Power Folding Exterior Mirrors
Powered Running Boards
Driver Seat Memory
Powered Tailgate
6.2L V8 Engine
10-Speed Automatic Transmission
Rear Wheel Drive
Professionally Detailed!
Well Maintained!
* Free CarFax Report !*
AND SO MUCH MORE!!!

MORE DETAILS COMING SOON!!!

Financing is available!

Check out our Payment Calculator to get an estimate on your monthly payments!

OR

Get pre-approved in no time by filling out a credit application on the 'Finance' section of our website!

We also offer MANY different Extended Warranty options!

Check out our Google Reviews by *Clicking* this LINK!

Referrals and Testimonials is what our business is built on!

The team here at AutoPark Dallas, is dedicated to offering a level of customer service not usually found in the automobile industry. Thanks to years of extensive car buying / selling experience, we pursue quality used and new vehicles that are hand-picked from factory sources. Our love for automobiles and dislike of traditional dealership tactics is what motivates us to provide the service we do! The pride we take in continuing this service

long after the vehicle has been delivered is what we strive for! Looking forward to making every effort to see that our customer is completely satisfied and a friend for life!

Pre-purchase inspections are always welcomed!

We also offer airport pick-up, competitive financing options, free CarFax Reports, Car Shipping nationwide, Extended Warranty plans, and so much more!

Trade-In(s) are always accepted or sell us your used car (MODIFIED OR NOT)! Please call or text for more information about Trade-Ins or selling your car to us @ (214) 945-2601!

#(214) 945-2601

Call or Text **Anytime!**

Se habla Español

WE BUY CARS!

WWW.AUTOPARKDALLAS.COM

Installed Options

Interior

- Adaptive Cruise Control- Air conditioning, rear
- Climate control, tri-zone automatic with individual climate settings for driver, right-front passenger and rear passengers (includes rear air vents)
- Door locks, power programmable with lockout protection and delayed locking
- Floor mats, color-keyed carpeted first and second row, removable (Deleted when (VYW) Premium carpeted floor mats, LPO is ordered.)
- Keyless Open includes extended range Remote Keyless Entry
- Memory settings includes two "presets" for driver seat adjuster, outside mirrors and power tilt/telescoping steering column
- Rear Camera Mirror
- Seat adjuster, driver 2-way power lumbar Beginning with production starting on November 1, 2021, vehicles will be forced to include (R6S) Not Equipped with 4-Way Driver and Front Passenger Power Lumbar, which removes 4-way driver and front passenger power lumbar. Vehicles will be equipped with 2-way driver and front passenger power lumbar. See dealer for details.
- Seat adjuster, front passenger 2-way power lumbar Beginning with production starting on November 1, 2021, vehicles will be forced to include (R6S) Not Equipped with 4-Way Driver and Front Passenger Power Lumbar, which removes 4-way driver and front passenger power lumbar. Vehicles will be equipped with 2-way driver and front passenger power lumbar. See dealer for details.
- Seat trim, Leather
- Seats, front bucket (Includes 12-way driver and front passenger adjustments. Beginning with production starting on November 1, 2021, vehicles will be forced to include (R6S) Not Equipped with 4-Way Driver and Front Passenger Power Lumbar, which removes 4-way driver and front passenger power lumbar. Vehicles will be equipped with 2-way driver and front passenger power lumbar. See dealer for details.)
- Seats, heated and ventilated driver and front passenger
- Seats, heated driver and front passenger
- Seats, second row bucket, power release (May substitute (ATT) second row 60/40 split-folding bench seats.)
- Seats, third row 60/40 split-bench, power-folding- Sensor, glass breakage
- Steering column, power tilt and telescoping
- Steering wheel controls, audio, phone, cruise control Conversation Enhancement, gap distance and heated steering wheel
- Steering wheel, heated, automatic
- Theft-deterrent alarm system, content theft alarm, self-powered horn
- Theft-deterrent system, unauthorized entry, engine immobilizer- Adaptive Remote Start
- Air filter, pollutant, odor and fine dust
- Ambient lighting, interior selectable for instrument panel, doors, footwell, map pocket and

Option Packages

Factory Installed Packages

ENGINE, 6.2L V8 WITH DYNAMIC FUEL MANAGEMENT

Direct Injection and Variable Valve Timing,
includes aluminum block construction (420 hp
[313.2 kW] @ 5600 rpm, 460 lb-ft of torque
[623.7 Nm] @ 4100 rpm)

ASSIST STEPS, POWER-RETRACTABLE WITH PERIMETER LIGHTING

\$1,750

AUDIO SYSTEM FEATURE, AKG STUDIO REFERENCE 36-SPEAKER SYSTEM

includes 3D Surround, Navigation Rendering
and Front Passenger Volume Control

\$4,300

Option Packages Total

\$6,050

door pull cups

- Augmented Reality live image of what is in front of the vehicle displayed on the 14.2" diagonal Cluster Display. When a navigational route is active, the system will overlay directional information on the live image being displayed.
- Console, floor with covered storage, large and small storage bins, dual cup holders, electronic climate controls and second row heated seat controls. Also includes auxiliary power outlet, USB A/C ports and 110-volt outlet
- Console, overhead- Defogger, rear-window- Door lock and latch shields
- Floor covering, color-keyed carpeting
- Head-Up Display, full-color, reconfigurable (includes the following views: Speed, Audio/Phone, Navigation and Performance)
- Keyless Start, push-button- Power outlet, 110-volt
- Power outlet, front auxiliary, 12-volt, located in front console (Standard with (D07) Floor console with covered storage only.)
- Rear Seat Reminder- Seat adjuster, driver 8-way power
- Seat adjuster, front passenger 8-way power- Seats, heated second row outboard seats
- Sensor, vehicle inclination- Sensor, vehicle interior movement
- Universal Home Remote includes garage door opener, programmable
- Window control, all windows, Express-Up/Down (auto Express-Up/Down via key fob) (Vehicles built prior to April 25, 2022, include all window control functionality. Certain vehicles built on or after April 25, 2022, will be forced to include (00N) Not Equipped with 2nd Row Express-Up Window Control, which removes only 2nd Row Express-Up Window Control functionality. See dealer for details or the window label for the features on a specific vehicle.)
- Wireless Phone Charging (The system wirelessly charges one compatible mobile device. Some phones have built-in wireless charging technology and others require a special adaptor/back cover. To check for phone or other device compatibility, see my.cadillac.com/learnAbout/wireless-charging or consult your carrier.)

Exterior

- LPO, Wheel locks, includes 4 locks and 1 key (Note that LPO 22" wheels will come with wheel locks without the LPO code (SFE)) (Included with RPO Codes (SGK), (SMD) and (SGG). Deleted when any LPO wheels are ordered.)
- Luggage rack, roof-mounted, Chrome
- Wheels, 22" (55.9 cm) 14-Spoke alloy with Polished finish
- Active Aero Shutters, front (Deleted when (LM2) 3.0L Turbo Diesel engine is ordered.)
- Assist steps, running board (Upgradeable to (B3L) power-retractable assist steps.)
- Door handles, Galvano accents- Door handles, illuminating
- Glass, acoustic, laminated windshield- Glass, deep-tinted
- Hands-Free Liftgate open and close, programmable memory height, with Cadillac branded projection light
- Headlamp control, automatic leveling system- Headlamps, LED
- Headlamps, automatic on/off- IntelliBeam, automatic high beam on/off
- Mirrors, outside heated power-adjustable power-folding, body-color, driver-side auto-dimming, integrated turn signal indicators and puddle lighting
- Moldings, Galvano bodyside- Rear Camera Mirror Washer- Spare tire lock, hoist shaft
- Sunroof, power, panoramic with tilt, slide, express-open/close and sun shade control
- Tail lamps, LED illumination- Tire, spare 265/70R17SL all-season, blackwall
- Tires, 275/50R22SL all-season, blackwall- Windshield, solar absorbing
- Wiper, rear intermittent- Wipers, front intermittent, Rainsense

Safety

- Adaptive Cruise Control- Air conditioning, rear
- Climate control, tri-zone automatic with individual climate settings for driver, right-front passenger and rear passengers (includes rear air vents)
- Door locks, power programmable with lockout protection and delayed locking
- Floor mats, color-keyed carpeted first and second row, removable (Deleted when (VYW) Premium carpeted floor mats, LPO is ordered.)
- Keyless Open includes extended range Remote Keyless Entry
- Memory settings includes two "presets" for driver seat adjuster, outside mirrors and power tilt/telescoping steering column
- Rear Camera Mirror
- Seat adjuster, driver 2-way power lumbar Beginning with production starting on November 1, 2021, vehicles will be forced to include (R6S) Not Equipped with 4-Way Driver and Front Passenger Power Lumbar, which removes 4-way driver and front passenger power lumbar. Vehicles will be equipped with 2-way driver and front passenger power lumbar. See dealer for details.
- Seat adjuster, front passenger 2-way power lumbar Beginning with production starting on November 1, 2021, vehicles will be forced to include (R6S) Not Equipped with 4-Way Driver and Front Passenger Power Lumbar, which removes 4-way driver and front passenger power lumbar. Vehicles will be equipped with 2-way driver and front passenger power lumbar. See dealer for details.
- Seat trim, Leather
- Seats, front bucket (Includes 12-way driver and front passenger adjustments. Beginning with production starting on November 1, 2021, vehicles will be forced to include (R6S) Not Equipped with 4-Way Driver and Front Passenger Power Lumbar, which removes 4-way driver and front passenger power lumbar. Vehicles will be equipped with 2-way driver and front passenger power lumbar. See dealer for details.)

- Seats, heated and ventilated driver and front passenger
- Seats, heated driver and front passenger
- Seats, second row bucket, power release (May substitute (ATT) second row 60/40 split-folding bench seats.)
- Seats, third row 60/40 split-bench, power-folding- Sensor, glass breakage
- Steering column, power tilt and telescoping
- Steering wheel controls, audio, phone, cruise control Conversation Enhancement, gap distance and heated steering wheel
- Steering wheel, heated, automatic
- Theft-deterrent alarm system, content theft alarm, self-powered horn
- Theft-deterrent system, unauthorized entry, engine immobilizer- Adaptive Remote Start
- Air filter, pollutant, odor and fine dust
- Ambient lighting, interior selectable for instrument panel, doors, footwell, map pocket and door pull cups
- Augmented Reality live image of what is in front of the vehicle displayed on the 14.2" diagonal Cluster Display. When a navigational route is active, the system will overlay directional information on the live image being displayed.
- Console, floor with covered storage, large and small storage bins, dual cup holders, electronic climate controls and second row heated seat controls. Also includes auxiliary power outlet, USB A/C ports and 110-volt outlet
- Console, overhead- Defogger, rear-window- Door lock and latch shields
- Floor covering, color-keyed carpeting
- Head-Up Display, full-color, reconfigurable (includes the following views: Speed, Audio/Phone, Navigation and Performance)
- Keyless Start, push-button- Power outlet, 110-volt
- Power outlet, front auxiliary, 12-volt, located in front console (Standard with (D07) Floor console with covered storage only.)
- Rear Seat Reminder- Seat adjuster, driver 8-way power
- Seat adjuster, front passenger 8-way power- Seats, heated second row outboard seats
- Sensor, vehicle inclination- Sensor, vehicle interior movement
- Universal Home Remote includes garage door opener, programmable
- Window control, all windows, Express-Up/Down (auto Express-Up/Down via key fob) (Vehicles built prior to April 25, 2022, include all window control functionality. Certain vehicles built on or after April 25, 2022, will be forced to include (00N) Not Equipped with 2nd Row Express-Up Window Control, which removes only 2nd Row Express-Up Window Control functionality. See dealer for details or the window label for the features on a specific vehicle.)
- Wireless Phone Charging (The system wirelessly charges one compatible mobile device. Some phones have built-in wireless charging technology and others require a special adaptor/back cover. To check for phone or other device compatibility, see my.cadillac.com/learnAbout/wireless-charging or consult your carrier.)

Mechanical

- Brakes, 4-wheel antilock, 4-wheel disc
- Differential, mechanical limited-slip (Upgradeable to (G96) electronic limited-slip differential when (Z66) Performance Package is ordered.)
- Tow/Haul mode selector
- Transmission, 10-speed automatic electronically controlled with overdrive, tow/haul mode and tap up/tap down shifting (Standard with (L87) 6.2L V8 engine only.)
- Air cleaner, high-capacity
- Automatic Stop/Start (Vehicles built between October, 2021 and December 12, 2021 with a V8 engine, will be forced to have (NSS) Not Equipped with Automatic Stop/Start, which removes Automatic Stop/Start, Engine control stop/start disable button and its content. Beginning with production starting December 13, 2021, (KL9) Automatic Stop/Start will be forced on as standard content. See dealer for details.)
- Brake lining wear indicator- Brake rotors, Duralife- Brake, automatic vehicle hold
- Brakes, Hill Start-Assist/Hill hold- Capless Fuel Fill
- Cooling, external engine oil cooler (Deleted when (LM2) 3.0L Turbo Diesel engine is ordered.)
- Cooling, external transmission oil cooler, heavy-duty air-to-oil- Electric Parking Brake
- Electronic Precision Shift- Engine air filtration monitor
- Engine control, stop/start system disable button (Vehicles built between October, 2021 and December 12, 2021 with a V8 engine, will be forced to have (NSS) Not Equipped with Automatic Stop/Start, which removes Automatic Stop/Start, Engine control stop/start disable button and its content. Beginning with production starting December 13, 2021, (ENL) Engine control stop/start disable button will be forced on as standard content. See dealer for details.)
- Engine, 6.2L V8 with Dynamic Fuel Management Direct Injection and Variable Valve Timing, includes aluminum block construction (420 hp [313.2 kW] @ 5600 rpm, 460 lb-ft of torque [623.7 Nm] @ 4100 rpm)
- Exhaust, dual with polished outlets
- GVWR, 7400 lbs. (3357 kg) (2WD models with (L87) 6.2L V8 engine.)
- Hitch Guidance dynamic single line to aid in trailer alignment for hitching
- Locking fuel door- Rear axle, 3.23 ratio- Rear wheel drive
- Steering, Electronic Power Steering (EPS)
- Suspension, Premium Smooth Ride (Upgradeable to (Z95) Magnetic Ride Control suspension when (Z66) Performance Package is ordered.)
- Trailering equipment, heavy-duty includes trailering hitch platform, 7-wire harness with independent fused trailering circuits and 7-way sealed connector

AUTOPARK

Dallas

Auto Park Dallas

View this car on our website at autoparkdallas.com/7130962

Website: autoparkdallas.com

Phone: (214) 945-2601

Map: 2061 S Stemmons Fwy, Lewisville, TX 75067

