

2022 Jeep Gladiator Rubicon 4X4 DIESEL,DUPONT KEVLAR,LIFTED,BUMPERS

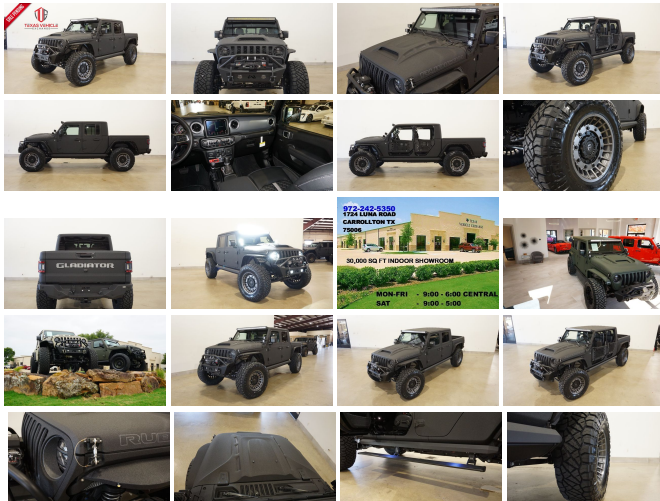
View this car on our website at tveauto.com/7130437/ebrochure



Our Price **\$99,900**

Specifications:

Year:	2022
VIN:	1C6JTBM6NL165776
Make:	Jeep
Stock:	165776
Model/Trim:	Gladiator Rubicon 4X4 DIESEL,DUPONT KEVLAR,LIFTED,BUMPERS
Condition:	Pre-Owned
Body:	Pickup Truck
Exterior:	Black
Engine:	ENGINE: 3.0L V6 TURBO DIESEL W/ESS G3
Interior:	Black Leather
Transmission:	TRANSMISSION: 8-SPEED AUTOMATIC (8HP75)
Mileage:	65
Drivetrain:	4 Wheel Drive
Economy:	City 16 / Highway 22



NATION WIDE FINANCING

SUBMIT CREDIT APP [WWW.TVEAUTO.COM](https://www.tveauto.com)

OR CALL 972-242-5350

"RAPTOR BLACK EDITION"

CUSTOM BUILT **KEVLAR** 2022 JEEP
GLADIATOR RUBICON 4X4 WITH 26R
PACKAGE

UPGRADES INCLUDE:

- * RAPTOR BLACK KEVLAR COATING WITH ANTHRACITE ACCENTS
- * 3.0L V6 TURBO DIESEL ENGINE WITH START STOP
- * CUSTOM ALEA BLACK LEATHER WITH SILVER STITCHING
- * FACTORY REMOTE START
- * REMOTE PROXIMITY KEYLESS ENTRY
- * COLD WEATHER GROUP
- * ACTIVE SAFETY GROUP
- * TRAILER TOW PACKAGE
- * FACTORY 8.4 INCH TOUCH SCREEN NAVIGATION WITH HD AM/FM/SIRIUS STEREO & ALPINE PREMIUM AUDIO SYSTEM
- * FACTORY BACK-UP CAMERA
- * U-CONNECT
- * 4 BODY ARMOR TRAIL DOORS & RECON MIRRORS
- * FAB FOURS STUBBY FRONT BUMPER WITH LED FOGLIGHTS
- * FRONT D-RINGS & ISOLATORS (ANTHRACITE)
- * SMITTYBILT NEW GEN II "X20" 10,000 LB WATERPROOF AND WIRELESS CONTROL WINCH WITH SYNTHETIC ROPE
- * FACTOR 55 PROLINK (BLACK)
- * FACTORY LED HEADLIGHTS
- * RUGGED RIDGE BLACK HEADLIGHT GUARDS
- * NEW JT CUSTOM VENTED HOOD
- * DRAKE OFF ROAD HOOD LATCHES
- * DV8 OFF ROAD JT SLIM STEEL FENDER FLARES

- * DV8 OFF ROAD FRONT & REAR INNER FENDERS
- * RUBICON EXPRESS 3.5" SUSPENSION LIFT KIT WITH TERAFLX FALCON SHOCKS
- * TERAFLX FALCON STABILIZER KIT
- * MOPAR AUXILIARY SWITCH BANK KIT
- * 50" LED LIGHT BAR AND 4 RIGID INDUSTRIES DUALY D2 LED PILLAR LIGHTS
- * AMP RESEARCH POWERSTEP XL RUNNING BOARDS WITH LED LIGHT KIT
- * SPRAY IN BEDLINER
- * ORACLE LED TAIL LIGHTS
- * DV8 OFF ROAD REAR BUMPER WITH REAR PARK DISTANCE SENSORS
- * ALL WEATHER FLOOR MATS
- * TAZER JL PROGRAMMER WITH SPEEDOMETER CALIBRATION
- * 20" FUEL ANTHRACITE & MATTE BLACK "MILITIA" WHEELS
- * BRAND NEW NITTO RIDGE GRAPPLER 38X13.50R/20 TIRES

WE BUILD EVERY JEEP WITH PRIDE! DO NOT HESITATE TO CALL US WITH THIS JEEP BUILD. WE CAN MAKE CHANGES TO THIS JEEP BUILD OR CUSTOM BUILD ANY JEEP TO YOUR PREFERENCE. GIVE US A CALL @ 972-242-5350 OR STOP BY FOR A TEST DRIVE. 1724 LUNA RD IN CARROLLTON - 2 MILES NORTH OF 635.

Vehicle History Report : as Of 03/26/2023



Snapshot

2022 JEEP GLADIATOR RUBICON



No accidents or damage reported to CARFAX



1 Service history record



2 Previous owners



Types of owners: Corporate, Personal



Last owned in Texas



65 Last reported odometer reading



FREE CARFAX Report

See the full CARFAX Report for additional information

*carfax Snapshot is a reflection of available information on the date the report was pulled. carfax is constantly being updated with new information and is subject to change at any time.

Our Location :



2022 Jeep Gladiator Rubicon 4X4 DIESEL,DUPONT KEVLAR,LIFTED,BUMPERS

Texas Vehicle Exchange - 972-242-5350 - View this car on our website at veauto.com/7130437/ebrochure

Installed Options

Interior

- 2 12V DC Power Outlets- 2 12V DC Power Outlets and 1 120V AC Power Outlet
- 2 Seatback Storage Pockets
- 4-Way Passenger Seat -inc: Manual Recline and Fore/Aft Movement
- 6-Way Driver Seat -inc: Manual Recline, Height Adjustment, Fore/Aft Movement and Manual Lumbar Support
- 60-40 Folding Split-Bench Front Facing Fold Forward Seatback Premium Cloth Rear Seat
- 97 MPH Vehicle Max Speed Calibration- Air Filtration- Analog Appearance- Compass
- Cruise Control w/Steering Wheel Controls- Day-Night Auto-Dimming Rearview Mirror
- Delayed Accessory Power
- Driver And Passenger Visor Vanity Mirrors w/Driver And Passenger Illumination
- Fade-To-Off Interior Lighting- Front And Rear Map Lights
- Front Center Armrest w/Storage
- Front Seats w/Cloth Back Material and Manual Driver Lumbar
- Full Carpet Floor Covering -inc: Carpet Front And Rear Floor Mats
- Full Floor Console w/Locking Storage, 2 12V DC Power Outlets and 1 120V AC Power Outlet
- Garage Door Transmitter
- Gauges -inc: Speedometer, Odometer, Voltmeter, Oil Pressure, Engine Coolant Temp, Tachometer, Inclinometer, Altimeter, Oil Temperature, Engine Hour Meter, Trip Odometer

- and Trip Computer
- HVAC -inc: Console Ducts- Illuminated Front Cupholder- Illuminated Rear Cupholder
- Instrument Panel Bin, Dashboard Storage, Driver / Passenger And Rear Door Bins
- Interior Trim -inc: Metal-Look Instrument Panel Insert, Metal-Look Door Panel Insert, Metal-Look Console Insert and Metal-Look Interior Accents
- Leather Steering Wheel- Locking Glove Box
- Manual Adjustable Front Head Restraints and Foldable Rear Head Restraints
- Manual Tilt/Telescoping Steering Column- Outside Temp Gauge- Perimeter Alarm
- Power 1st Row Windows w/Driver And Passenger 1-Touch Down
- Power Door Locks w/Autolock Feature- Power Rear Windows
- Premium Cloth Low-Back Bucket Seats- Proximity Key For Doors And Push Button Start
- Redundant Digital Speedometer
- Remote Keyless Entry w/Integrated Key Transmitter, Illuminated Entry and Panic Button
- Sentry Key Immobilizer- Smart Device Integration- Systems Monitor- Trip Computer
- Urethane Gear Shifter Material
- Voice Activated Dual Zone Front Automatic Air Conditioning

Exterior

- Auto On/Off Aero-Composite Halogen Daytime Running Headlamps w/Delay-Off
- Black Door Handles- Black Front Bumper w/2 Tow Hooks
- Black Power Heated Side Mirrors w/Manual Folding- Black Rear Bumper w/2 Tow Hooks
- Black Side Windows Trim- Black Wheel Well Trim and Black Fender Flares
- Body-Color Grille w/Colored Accents- Clearcoat Paint w/Badging- Deep Tinted Glass
- Front Fog Lamps- Full-Size Spare Tire Stored Underbody w/Crankdown
- Galvanized Steel/Aluminum Panels- Manual Convertible Top w/Fixed Roll-Over Protection
- Regular Box Style- Removable Rear Window- Steel Spare Wheel
- Tailgate Rear Cargo Access- Tailgate/Rear Door Lock Included w/Power Door Locks
- Tires: LT285/70R17C BSW A/T- Variable Intermittent Wipers
- Wheels: 17" x 7.5" Granite Crystal Aluminum

Safety

- 2 12V DC Power Outlets- 2 12V DC Power Outlets and 1 120V AC Power Outlet
- 2 Seatback Storage Pockets
- 4-Way Passenger Seat -inc: Manual Recline and Fore/Aft Movement
- 6-Way Driver Seat -inc: Manual Recline, Height Adjustment, Fore/Aft Movement and Manual Lumbar Support
- 60-40 Folding Split-Bench Front Facing Fold Forward Seatback Premium Cloth Rear Seat
- 97 MPH Vehicle Max Speed Calibration- Air Filtration- Analog Appearance- Compass
- Cruise Control w/Steering Wheel Controls- Day-Night Auto-Dimming Rearview Mirror
- Delayed Accessory Power
- Driver And Passenger Visor Vanity Mirrors w/Driver And Passenger Illumination
- Fade-To-Off Interior Lighting- Front And Rear Map Lights
- Front Center Armrest w/Storage
- Front Seats w/Cloth Back Material and Manual Driver Lumbar
- Full Carpet Floor Covering -inc: Carpet Front And Rear Floor Mats
- Full Floor Console w/Locking Storage, 2 12V DC Power Outlets and 1 120V AC Power Outlet
- Garage Door Transmitter
- Gauges -inc: Speedometer, Odometer, Voltmeter, Oil Pressure, Engine Coolant Temp, Tachometer, Inclinator, Altimeter, Oil Temperature, Engine Hour Meter, Trip Odometer and Trip Computer
- HVAC -inc: Console Ducts- Illuminated Front Cupholder- Illuminated Rear Cupholder
- Instrument Panel Bin, Dashboard Storage, Driver / Passenger And Rear Door Bins
- Interior Trim -inc: Metal-Look Instrument Panel Insert, Metal-Look Door Panel Insert, Metal-Look Console Insert and Metal-Look Interior Accents
- Leather Steering Wheel- Locking Glove Box
- Manual Adjustable Front Head Restraints and Foldable Rear Head Restraints
- Manual Tilt/Telescoping Steering Column- Outside Temp Gauge- Perimeter Alarm
- Power 1st Row Windows w/Driver And Passenger 1-Touch Down
- Power Door Locks w/Autolock Feature- Power Rear Windows
- Premium Cloth Low-Back Bucket Seats- Proximity Key For Doors And Push Button Start
- Redundant Digital Speedometer
- Remote Keyless Entry w/Integrated Key Transmitter, Illuminated Entry and Panic Button
- Sentry Key Immobilizer- Smart Device Integration- Systems Monitor- Trip Computer
- Urethane Gear Shifter Material
- Voice Activated Dual Zone Front Automatic Air Conditioning

Mechanical

- 1200# Maximum Payload- 22 Gal. Fuel Tank- 220 Amp Alternator
- 4-Wheel Disc Brakes w/4-Wheel ABS, Front And Rear Vented Discs, Brake Assist and Hill Hold Control

- 4.10 Rear Axle Ratio- 50 State Emissions
- 650CCA Maintenance-Free Battery w/Run Down Protection- 7 Skid Plates
- Auto Locking Hubs- Brake Actuated Limited Slip Differential
- Class II Towing Equipment -inc: Hitch and Trailer Sway Control
- Driver Selectable Front Locking Differential- Driver Selectable Rear Locking Differential
- Electro-Hydraulic Power Assist Steering- Engine Auto Stop-Start Feature
- Engine Oil Cooler- Engine: 3.6L V6 24V VVT UPG I w/ESS
- Fox Premium Shock Absorbers
- Front Active w/Driver Control Anti-Roll Bar and Rear Anti-Roll Bar- GVWR: 6,250 lbs
- Leading Link Front Suspension w/Coil Springs- Manual Transfer Case
- Part-Time Four-Wheel Drive- Performance Suspension- Single Stainless Steel Exhaust
- Solid Axle Rear Suspension w/Coil Springs- Trailer Wiring Harness
- Transmission: 6-Speed Manual

Option Packages

Factory Installed Packages

ENGINE: 3.0L V6 TURBO DIESEL W/ESS G3

- inc: ABS 4-Wheel HD Disc Brakes w/Front FNC, Auxiliary Battery, Selective Catalytic Reduction (Urea), Non-Lock Fuel Cap w/Discriminator, Gray EcoDiesel Badge, Supplemental Heater, 19 Gallon Fuel Tank, Stop-Start Dual Battery System, 3.73 Rear Axle Ratio
- \$4,010**

TRANSMISSION: 8-SPEED AUTOMATIC (8HP75)

- inc: Transmission Skid Plate, Selec-Speed Control
- \$2,000**

AUXILIARY SWITCH GROUP

- inc: 700 Amp Maintenance Free Battery, 240 Amp Alternator, Auxiliary Switches
- \$395**

BODY COLOR 3-PIECE HARD TOP

- inc: Freedom Panel Storage Bag, Rear Window Defroster, Rear Sliding Window, No Soft Top
- \$2,695**

COLD WEATHER GROUP

- inc: Heated Steering Wheel, Heated Front Seats
- \$1,195**

SAFETY GROUP

- inc: ParkSense Rear Park Assist System, Blind Spot & Cross Path Detection, LED Taillamps
- \$1,145**

TRAILER TOW PACKAGE

- inc: Trailer Hitch Zoom, Class IV Receiver Hitch, Heavy Duty Engine Cooling, 240 Amp Alternator
- \$695**

QUICK ORDER PACKAGE 26R

- inc: Engine: 3.0L V6 Turbo Diesel w/ESS G3, Transmission: 8-Speed Automatic (8HP75)

Option Packages Total
\$12,135

Texas Vehicle Exchange

tveauto.com

972-242-5350

1724 Luna Road

Carrollton, TX 75006

© 2023 AutoRevo - All rights reserved. - Powered by [AutoRevo](#)