

Reynolds Auto Group

972-943-7799



reynoldsautogrouptx.com

2013 Chevrolet Express Cargo Van 2500 Long Wheel Base

Our Price \$18,887

View this vehicle on our website at reynoldsautotx.com

Reynolds
AUTO GROUP

[972-943-7799](tel:972-943-7799)

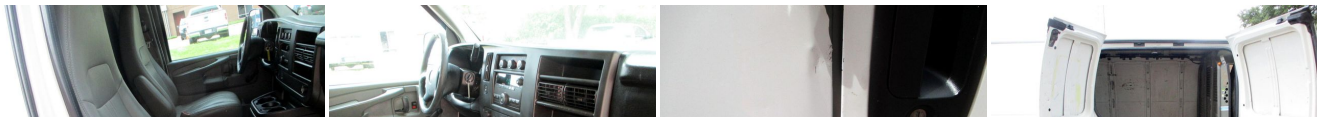
1701 Capital Ave , Plano, Texas 75074

Photos

Details

Contact





Specifications:

Year:	2013
VIN:	1GCWGGCA8D1110054
Make:	Chevrolet
Stock:	110054
Model/Trim:	Express Cargo Van 2500 Long Wheel Base
Condition:	Pre-Owned
Body:	Minivan/Van
Exterior:	White
Engine:	ENGINE, VORTEC 4.8L V8 SFI FLEXFUEL
Interior:	Gray Leatherette
Mileage:	119,474
Drivetrain:	Rear Wheel Drive

Vehicle Description

A very hard to find long wheelbase G2500 Cargo Van. This van runs and drives excellent and has cold blowing A/C. It also has a very good set of tires on it as well. We have had it checked over for as far as mechanical and electrical issues and it came back with a clean bill of health. This van has a few little scrapes and dings on it but nothing you wouldn't expect on a cargo van. It has the 4.8 V8 Vortec engine that purrs like a kitten. Anyone wanting a good work van that will give them years of service and need the extra cargo area should come check this one out. It has a clean Car Fax history with service records, and it is a Texas vehicle. If you should have any interest in this van or any others that we might have just give Rocky Reynolds a call or text to 214-542-7794 and he can answer any questions you may have or set up a good time for you to come in and look it over and drive it. We are a family owned and operated business in Texas since 1959 and sure would appreciate the opportunity to earn your business.

Installed Options

Interior

- Seats, front bucket with vinyl trim and outboard head restraints, includes inboard armrests. (Requires (**W) interior trim.)
- Seating arrangement, driver and front passenger high-back buckets with head restraints and vinyl or cloth trim
- Air conditioning, single-zone manual
- Driver Information Center includes fuel range, average speed, oil life, tire pressure monitoring, fuel used, ice warning, engine hours, average fuel economy, tachometer, and maintenance reminders. Compass and outside temperature available if equipped. (When (FHZ) Dedicated Compressed Natural Gas (CNG) system is ordered, includes average speed, oil life, tire pressure monitoring, ice warning, engine hours, tachometer and maintenance reminders. Compass and outside temperature available if equipped.)
- Tow/haul mode selector, instrument panel-mounted
- Power outlets, 2 auxiliary on engine console cover with covers, 12-volt
- Console, engine cover with open storage bin
- Floor covering, full-length Black rubberized-vinyl (Not available with (YF2) Ambulance Package or (RFM) rear floor covering delete.)
- Steering wheel, steel sleeve column with theft-deterrent locking feature, Black
- Instrumentation, analog with speedometer, odometer with trip odometer, fuel level, voltmeter, engine temperature and oil pressure
- Oil life monitor- Warning tones, headlamp on and key-in-ignition
- Theft-deterrent system, vehicle, PASS-Key III- Defogger, side windows
- Cup holders, 3 on the engine console cover
- Trim panels, hinged rear side doors and hinged rear doors
- Headliner, cloth, over driver and passenger
- Visors, driver and front passenger, cloth, padded- Assist handle, front passenger
- Lighting, interior with 2 dome lights, defeat switch and door handle-activated switches

Exterior

- Wheels, 4 - 16" x 6.5" (40.6 cm x 16.5 cm) steel includes Gray center caps and steel spare (Standard on CG23405, CG23705, CG33405 and CG33705 models.)
- Tires, front LT245/75R16E all-season, blackwall (Standard on the CG23405, CG23705, CG33405 and CG33705 models.)

Option Packages

Factory Installed Packages

ENGINE, VORTEC 4.8L V8 SFI FLEXFUEL
(280 hp [208.8 kW] @ 5200 rpm, 295 lb-ft of
torque [398.3 N-m] @ 4600 rpm)

- Tires, rear LT245/75R16E all-season, blackwall (Standard on the CG23405, CG23705, CG33405 and CG33705 models.)
- Tire, spare LT245/75R16E all-season, blackwall located at rear underbody of vehicle (Standard on the CG23405, CG23705, CG33405 and CG33705 models.)
- Door, swing-out passenger-side, 60/40 split
- Bumpers, front and rear painted Black with step-pad (Deleted when (ZR7) Chrome Appearance Package is ordered.)
- Grille, Black composite with single rectangular halogen headlamps (Not available with (ZR7) Chrome Appearance Package.)
- Headlamps, single halogen (Not available with (ZR7) Chrome Appearance Package.)
- Mirrors, outside manual, Black- Glass, Solar-Ray light-tinted, all windows
- Wipers, front intermittent wet-arm with pulse washers- License plate kit, front

Safety

- Seats, front bucket with vinyl trim and outboard head restraints, includes inboard armrests. (Requires (**W) interior trim.)
- Seating arrangement, driver and front passenger high-back buckets with head restraints and vinyl or cloth trim
- Air conditioning, single-zone manual
- Driver Information Center includes fuel range, average speed, oil life, tire pressure monitoring, fuel used, ice warning, engine hours, average fuel economy, tachometer, and maintenance reminders. Compass and outside temperature available if equipped. (When (FH2) Dedicated Compressed Natural Gas (CNG) system is ordered, includes average speed, oil life, tire pressure monitoring, ice warning, engine hours, tachometer and maintenance reminders. Compass and outside temperature available if equipped.)
- Tow/haul mode selector, instrument panel-mounted
- Power outlets, 2 auxiliary on engine console cover with covers, 12-volt
- Console, engine cover with open storage bin
- Floor covering, full-length Black rubberized-vinyl (Not available with (YF2) Ambulance Package or (RFM) rear floor covering delete.)
- Steering wheel, steel sleeve column with theft-deterrent locking feature, Black
- Instrumentation, analog with speedometer, odometer with trip odometer, fuel level, voltmeter, engine temperature and oil pressure
- Oil life monitor- Warning tones, headlamp on and key-in-ignition
- Theft-deterrent system, vehicle, PASS-Key III- Defogger, side windows
- Cup holders, 3 on the engine console cover
- Trim panels, hinged rear side doors and hinged rear doors
- Headliner, cloth, over driver and passenger
- Visors, driver and front passenger, cloth, padded- Assist handle, front passenger
- Lighting, interior with 2 dome lights, defeat switch and door handle-activated switches

Mechanical

- Transmission, 6-speed automatic, heavy-duty, electronically controlled with overdrive tow/haul mode and internal transmission oil cooler (Standard on CG23405, CG23705, CG33405 and CG33705 models. Requires (L20) Vortec 4.8L V8 SFI FlexFuel engine or (L96) Vortec 6.0L V8 SFI FlexFuel engine or (LC8) Gaseous 6.0L V8 SFI engine. Reference the Engine/Axle page for availability.)
- Engine, Vortec 4.8L V8 SFI FlexFuel (280 hp [208.8 kW] @ 5200 rpm, 295 lb-ft of torque [398.3 N-m] @ 4600 rpm) (Includes external engine oil cooler. Standard on CG23405, CG23705, CG33405 and CG33705 models. Reference the Engine/Axle page for availability.)
- Rear axle, 3.42 ratio (Standard on CG13405, CH13405, CG23405, CG23705, CG33405 and CG33705 models. Required with (LU3) Vortec 4.3L V6 MFI engine, (L20) Vortec 4.8L V8 SFI FlexFuel engine, (L96) Vortec 6.0L V8 SFI FlexFuel or (LC8) Gaseous 6.0L V8 SFI engine. Available with (LMF) Vortec 5.3L V8 SFI FlexFuel engine. Reference the Engine/Axle page for availability.)
- Body, standard
- Transmission oil cooler, external (Included and only available with (L20) Vortec 4.8L V8 SFI FlexFuel engine or (L96) Vortec 6.0L V8 SFI FlexFuel engine.)
- Rear wheel drive
- Battery, 600 cold-cranking amps, maintenance-free with rundown protection and retained accessory power
- Alternator, 105 amps (Not available with CG13405 or CH13405 models.)
- Frame, full-length box ladder-type
- GVWR, 8600 lbs. (3901 kg) (Standard on CG23405 or CG23705 models. Reference the Engine/Axle page for availability.)
- Suspension, front independent with coil springs and stabilizer bar (Requires CG13405, CG23405, CG23705, CG33405 and CG33705 models.)
- Suspension, rear hypoid drive axle with multi-leaf springs- Steering, power
- Brakes, 4-wheel antilock, 4-wheel disc
- Fuel tank capacity, mid-frame and approximately 31 gallons (117.3L)
- Exhaust, aluminized stainless-steel muffler and tailpipe

<h3> All advertised prices exclude government fees and taxes, any dealer document preparation charge, and any emission testing charge. The price for listed vehicles as equipped does not include charges such as: License, Title, Registration Fees, State or Local Taxes, Dealer Prep, Smog Fees, or Delivery Fees. DEALER makes no

representations, expressed or implied, to any actual or prospective purchaser or owner of this vehicle as to the existence, ownership, accuracy, description or condition of the listed vehicle's equipment, accessories, price, specials or any warranties. Any and all differences must be addressed prior to the sale of this vehicle.

Reynolds Auto Group

Reynolds Auto Group

View this car on our website at reynoldsautotx.com/7129862

Website: reynoldsautotx.com

Phone: [972-943-7799](tel:972-943-7799)

Map: [1701 Capital Ave, Plano, Texas 75074](#)

