

2008 Ford Super Duty F-250 SRW XL

View this car on our website at paniaguaautos.com/7126840/ebrochure

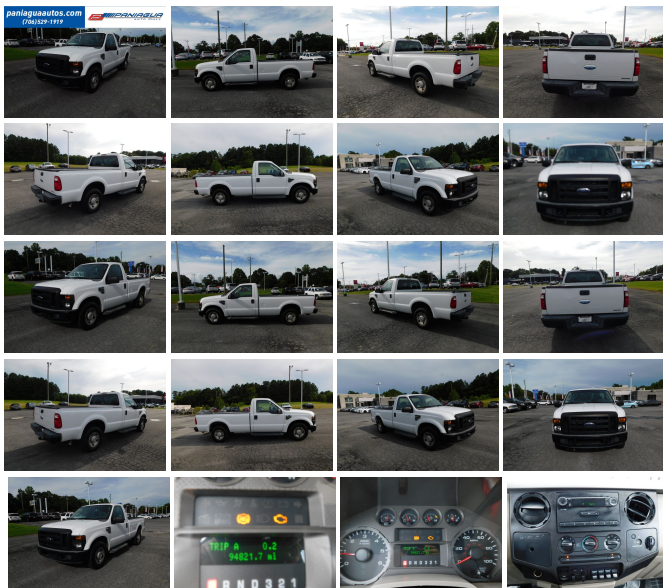


Our Price **\$7,495**

Specifications:

Year: 2008
VIN: 1FTNF20598ED69353
Make: Ford
Stock: 9068
Model/Trim: Super Duty F-250 SRW XL
Condition: Pre-Owned
Body: Pickup Truck
Exterior: White
Engine: 5.4L SOHC 24-VALVE SMFI TRITON V8 ENGINE
Interior: Tan Vinyl
Transmission: AUTOMATIC
Mileage: 94,821
Drivetrain: Rear Wheel Drive

2008 FORD F250 SUPER DUTY XL 5.4L V8 AUTOMATIC VYNIL INTERIOR MANUAL WINDOWS COLD AC TRUCK IS READY TO BE SOLD HURRY IN TODAY AND CHECK OUT ALL OF OUR SPECIAL DEALS



2008 Ford Super Duty F-250 SRW XL

Paniagua Auto Mall - 706-529-1919 & 423-472-4045 - View this car on our website at paniaguaautos.com/7126840/ebrochure

Our Location :



2008 Ford Super Duty F-250 SRW XL

Paniagua Auto Mall - 706-529-1919& 423-472-4045 - View this car on our website at paniaguaautos.com/7126840/ebrochure

Installed Options

Interior

- (4) air registers w/positive shut-off- AM/FM stereo-inc: digital clock, (2) speakers
- Ashtray & cigar lighter- Auxiliary pwr point
- Black instrumentation-inc: tachometer, speedometer, oil pressure, coolant temp, fuel gauge, indicator lights, message center w/odometer, trip odometer, engine hour meter, warning messages, voltmeter, distance-to-empty, average fuel economy
- Black vinyl full-floor covering- Color-keyed cloth headliner
- Color-keyed molded door trim panel-inc: hard armrest, grab handle, reflector
- Color-keyed scuff plates- Dash-top tray
- Door operated dome lamp w/time delay off & IP switch - Driver & passenger grab handles
- Dual color-keyed cloth sunvisors-inc: driver-side map strap, passenger-side mirror insert
- Dual color-keyed coat hooks- Front passenger-side roof ride handle- Glove box
- HD vinyl front bench seat w/recline-inc: armrest, cupholders
- Instrument panel mounted storage bin & trash bag hook - Map lamps
- Tire pressure monitoring system

Exterior

- Black box-rail & tailgate top-edge moldings- Black door handles
- Black fold-away manual mirrors- Black lower air dam- Black painted grille
- Black painted rear bumper
- Black painted steel front bumper w/grained mold-in-color top cover - Front fender vents
- Front license plate bracket *Standard in states where required. Optional in all other states.*
- Interval windshield wipers- Pickup box/cargo lights- Rear license plate bracket
- Removable locking tailgate w/black handle & Tailgate Assist
- Sealed beam halogen headlamps- Solar tinted glass

Safety

- (4) air registers w/positive shut-off- AM/FM stereo-inc: digital clock, (2) speakers
- Ashtray & cigar lighter- Auxiliary pwr point

Factory Equipped - Factory Package

- Black instrumentation-inc: tachometer, speedometer, oil pressure, coolant temp, fuel gauge, indicator lights, message center w/odometer, trip odometer, engine hour meter, warning messages, voltmeter, distance-to-empty, average fuel economy
- Black vinyl full-floor covering- Color-keyed cloth headliner
- Color-keyed molded door trim panel-inc: hard armrest, grab handle, reflector
- Color-keyed scuff plates- Dash-top tray
- Door operated dome lamp w/time delay off & IP switch - Driver & passenger grab handles
- Dual color-keyed cloth sunvisors-inc: driver-side map strap, passenger-side mirror insert
- Dual color-keyed coat hooks- Front passenger-side roof ride handle- Glove box
- HD vinyl front bench seat w/recline-inc: armrest, cupholders
- Instrument panel mounted storage bin & trash bag hook - Map lamps
- Tire pressure monitoring system

Mechanical

- (2) front tow hooks- 115-amp HD alternator
- 17" argent painted steel wheels w/painted center ornaments- 2-ton mechanical jack
- 4-wheel anti-lock braking system (ABS)- 4.10 axle ratio
- 5.4L SOHC 24-valve SMFI Triton V8 engine - 6-speed HD manual transmission w/OD
- 72 amp/hr (650 CCA) battery
- 8' pickup box-inc: (6) tie-down hooks, partitionable & stackable storage
- Class V trailer hitch receiver-inc: 2" hitch
- Engine block heater *Standard in AK, CO, IA, ID, ME, MI, MN, MT, ND, NH, NY, SD, VT, WI & WY. Optional in all other states.*
- Front stabilizer bar- Full-size spare tire w/lock & carrier- HD gas shock absorbers
- LT245/75R17E all-season BSW tires- Pwr 4-wheel disc brakes w/vacuum boost
- Pwr steering- Rear wheel drive- Stationary elevated engine idle control (SEIC)
- Trailer tow pkg-inc: 7-wire harness w/relays, 7/4 pin combination connector, trailer brake wiring kit w/o controller
- Twin I-beam front axle w/coil spring suspension

Option Packages

Factory Installed Packages

-
5.4L SOHC 24-VALVE SMFI TRITON V8 ENGINE

We sale used vehicles as is no warranty. We sale extended warranties ask one of our sales rep. for details.

Paniagua Auto Mall

paniaguaautos.com

706-529-1919 & 423-472-4045

1776 E. Walnut Ave

Dalton, Georgia 30721

© 2023 AutoRevo - All rights reserved. - Powered by AutoRevo