

2011 BMW 335 X-DRIVE EXCELLENT RUNNER, CLEAN & SERVICED,

Steve Sherman (952) 303-1411

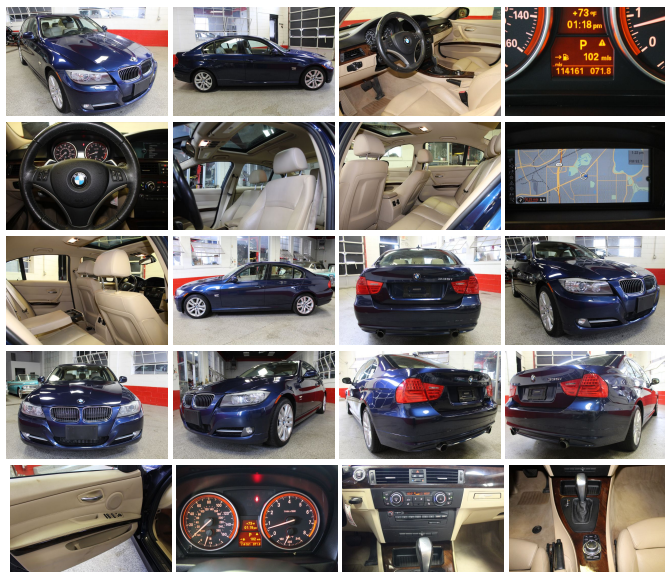
View this car on our website at automotion.autorevo.com/7126106/ebrochure



Our Price **\$12,497**

Specifications:

Year:	2011
VIN:	WBAPL5G56BNN22042
Make:	BMW 335 X-DRIVE
Stock:	AM232042
Model/Trim:	EXCELLENT RUNNER, CLEAN & SERVICED,
Condition:	Pre-Owned
Body:	Sedan
Exterior:	Le Mans Blue Metallic
Engine:	3.0-liter, 300-horsepower, dual overhead cam (DOHC), inline 24-valve 6-cylinder engine with aluminum engine block, TwinPower Turbo technology, Valvetronic, piezo direct injection, and Double-VANOS steplessly variable valve timing
Interior:	Tan
Mileage:	114,063
Drivetrain:	All Wheel Drive
Economy:	City 18 / Highway 26



2011 BMW 335 X-DRIVE EXCELLENT RUNNER, CLEAN & SERVICED,

Auto Motion - (952) 303-1411 - View this car on our website at automotion.autorevo.com/7126106/ebrochure

Our Location :



2011 BMW 335 X-DRIVE EXCELLENT RUNNER, CLEAN & SERVICED,
Auto Motion - (952) 303-1411 - View this car on our website at automotion.autorevo.com/7126106/ebrochure

Installed Options

Interior

- 3-spoke leather-wrapped multi-function steering wheel with audio and Bluetooth phone controls (if so equipped)
- 8-way power front bucket seats with 2-way manual headrests with Active Head Restraints feature, and driver memory with 2 presets for exterior mirror and seat positions
- Advanced Vehicle Key Memory includes climate-control temperature and air-distribution settings, exterior mirror and power seat settings, audio tone settings and radio presets with optional Navigation system, central-locking preferences, and lighting preferences
- Central locking system with center console switch (leaves gas filler door unlocked), double-lock feature and 2-step unlocking
- Coded Driveway Protection
- Courtesy lights include fade in/fade out, actuation from remote, automatic switch-on when engine is turned off, separately controlled left/right front and rear reading lights, front footwell lighting, and illuminated vanity mirrors
- Dark burl walnut wood trim - Driver and passenger visor vanity mirrors
- Dynamic Cruise Control- Electric interior trunk release- Leatherette upholstery
- On-board computer with Check Control provides feedback on the vehicle's operating status: oil level indicator and distance to next service appointment/oil change, as well as other detailed information, such as spark plug and micro-filter status. It also provides travel information travel range on remaining fuel, external temperature and more
- Remote keyless entry with remote trunk release
- Automatic climate control includes micro-filter, automatic air recirculation, left/right temperature control, temperature- and volume-controlled rear outlets, windshield misting sensor, MAX A/C function, heat at rest, and recall of individual user settings
- Auxiliary power outlet- BMW Ambiance lighting
- Check Control vehicle monitor system with pictogram display, oil status display, and Condition Based Service indicator
- Floor Mats- Front passenger cupholders (dashboard-integrated)
- Front seatback storage nets- Front-seat center armrest- Locking glovebox
- Power front and rear windows with "one-touch" up/down operation - Rear window defroster
- Rear-seat center armrest with cupholders
- Service Interval Indicator with miles-to-service readout

- Tilt/telescopic steering wheel column

Exterior

- 17" x 8.0" radial-spoke alloy wheels (style 284) -inc: P225/45R17 run-flat performance tires
- Heated dual power mirrors and heated windshield washer jets
- 2-way power glass moonroof with "one-touch" operation and sliding interior sunshade
- Adaptive Brake Lights- Ground lighting located in bottom of exterior door handles
- Halogen free-form front foglights
- Rain-sensing windshield wipers and Automatic headlight control
- Retractable, high-intensity headlight washers
- Xenon Adaptive Headlights w/dynamic auto-leveling and Corona headlight-rings

Safety

- 3-spoke leather-wrapped multi-function steering wheel with audio and Bluetooth phone controls (if so equipped)
- 8-way power front bucket seats with 2-way manual headrests with Active Head Restraints feature, and driver memory with 2 presets for exterior mirror and seat positions
- Advanced Vehicle Key Memory includes climate-control temperature and air-distribution settings, exterior mirror and power seat settings, audio tone settings and radio presets with optional Navigation system, central-locking preferences, and lighting preferences
- Central locking system with center console switch (leaves gas filler door unlocked), double-lock feature and 2-step unlocking
- Coded Driveaway Protection
- Courtesy lights include fade in/fade out, actuation from remote, automatic switch-on when engine is turned off, separately controlled left/right front and rear reading lights, front footwell lighting, and illuminated vanity mirrors
- Dark burl walnut wood trim- Driver and passenger visor vanity mirrors
- Dynamic Cruise Control- Electric interior trunk release- Leatherette upholstery
- On-board computer with Check Control provides feedback on the vehicle's operating status: oil level indicator and distance to next service appointment/oil change, as well as other detailed information, such as spark plug and micro-filter status. It also provides travel information travel range on remaining fuel, external temperature and more
- Remote keyless entry with remote trunk release
- Automatic climate control includes micro-filter, automatic air recirculation, left/right temperature control, temperature- and volume-controlled rear outlets, windshield misting sensor, MAX A/C function, heat at rest, and recall of individual user settings
- Auxiliary power outlet- BMW Ambiance lighting
- Check Control vehicle monitor system with pictogram display, oil status display, and Condition Based Service indicator
- Floor Mats- Front passenger cupholders (dashboard-integrated)
- Front seatback storage nets- Front-seat center armrest- Locking glovebox
- Power front and rear windows with "one-touch" up/down operation - Rear window defroster
- Rear-seat center armrest with cupholders
- Service Interval Indicator with miles-to-service readout
- Tilt/telescopic steering wheel column

Mechanical

- 4-wheel ventilated anti-lock disc brakes with Dynamic Brake Control (DBC)
- 6-speed manual transmission
- 3.0-liter, 300-horsepower, dual overhead cam (DOHC), inline 24-valve 6-cylinder engine with aluminum engine block, TwinPower Turbo technology, Valvetronic, piezo direct injection, and Double-VANOS steplessly variable valve timing
- 5-link rear suspension with cast-aluminum upper transverse arms
- Chrome-plated exhaust tips
- Double-pivot type front suspension with dual forged-aluminum lower arms (328i xDrive and 335i xDrive have steel lower arms and a steel subframe, plus an aluminum thrust plate)
- Electronic throttle control- Engine Start/Stop button
- Engine-speed-sensitive, variable-assist power steering
- Front and rear anti-roll (stabilizer) bars- Twin-tube gas-pressure shock absorbers
- xDrive all-wheel-drive system

Auto Motion

automotion.autorevo.com

(952) 303-1411

4419 Excelsior Blvd

Saint Louis Park, MN 55416

© 2024 AutoRevo - All rights reserved. - Powered by AutoRevo