



2014 Jeep Wrangler Unlimited Sport

Our Price \$25,633

Retail Value \$27,920

View this vehicle on our website at alttx.com

Auto Locators of Texas

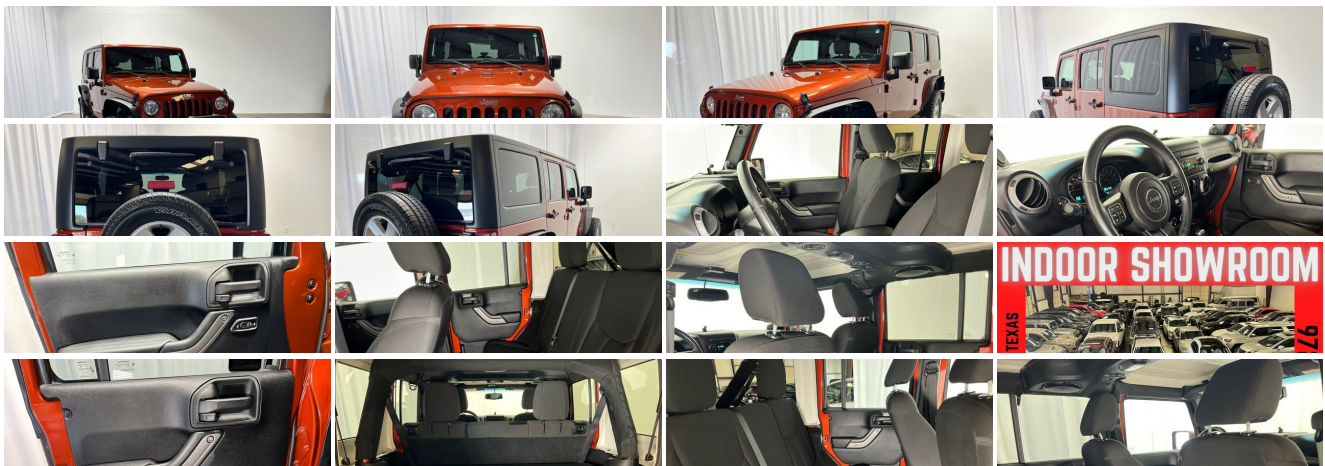
(972) 612-3100

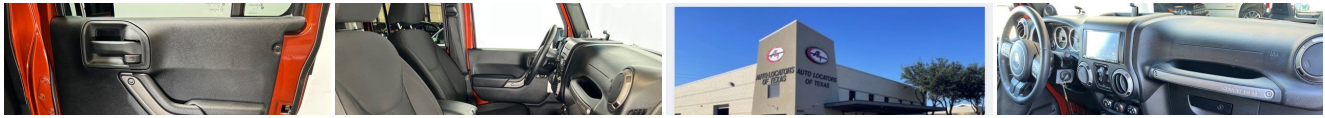
4460 Tradition Trail , Plano, TX 75093

Photos

Details

Contact





Specifications:

Year:	2014
VIN:	1C4BJWDG5EL269701
Make:	Jeep
Stock:	4028
Model/Trim:	Wrangler Unlimited Sport
Condition:	Pre-Owned
Body:	SUV
Exterior:	Copperhead Pearlcoat
Engine:	["ENGINE: 3.6L V6 24V VVT"]
Interior:	Black Cloth
Transmission:	["TRANSMISSION: 5-SPEED AUTOMATIC (W5A580)", "-inc: Tip Start, Hill Descent Control"]
Mileage:	89,792
Economy:	City 16 / Highway 20

Vehicle Description

Just listed 2014 Jeep Wrangler UNLIMITED 4X4 AUTOMATIC with CUSTOM FRONT BUMPER with LED LIGHTS, SIDE PREDATOR STEP BARS, METAL FLARES, OVERSIZED TIRES and HARD TOP. Buy this loaded 1 OWNER Jeep Wrangler 4X4 with confidence since it is a CARFAX CERTIFIED vehicle. Sporty copperhead metallic exterior with black interior. Remove the HARD TOP for the summer and enjoy the great nights. Loaded with upgraded stereo, power windows, power locks, OVERSIZED TIRES, window tint FRONT OFF OAD BUMPER, SIDE PREDATOR STEP BARS and freezing cold AC. This super clean 4x4 Jeep Wrangler will not last! Just serviced with new fluids and ready to go! Do you want your next car buying experience to be an enjoyable and a memorable one? After 23 years in business, we've streamlined the buying process to be completely hassle and stress free. Why wait? We can have you in and out in as little as 45 minutes from the time you step into the dealership to the time you drive away in your new vehicle. Our customers great reviews have a common theme, great prices, quality vehicles and an efficient no hassle environment. Just look on Yelp and Google to read what our 10,000 plus happy customers are saying about Auto Locators of Texas! Auto Locators of Texas has been in business for over 23 years, and we pride ourselves on our friendly, no-pressure approach to selling vehicles. We offer a wide selection of the highest quality used cars, trucks, and SUV's. Our finance department works hard to find every customer the best deal. Trade-ins are always welcome so we can answer your question of "what is my trade worth". We offer a wide variety of services from detailing, ding repair, body shop, service, and extended service plans. Call us today or check out more of our awesome selection at our website: <http://www.alttx.com>. WE HOPE TO SEE YOU SOON! HARD TOP and AUTOMATIC!! HARDTOP AUTOMATIC 4X4

Installed Options

Interior

- Cloth Bucket Seats -inc: adjustable head restraints
- Full Carpet Floor Covering -inc: Carpet Front And Rear Floor Mats
- Gauges -inc: Speedometer, Odometer, Engine Coolant Temp, Tachometer, Trip Odometer and Trip Computer
- Trip Computer- 2 12V DC Power Outlets- 2 Seatback Storage Pockets
- 4-Way Passenger Seat -inc: Manual Recline and Fore/Aft Movement
- 6-Way Driver Seat -inc: Manual Recline, Height Adjustment and Fore/Aft Movement
- 60-40 Folding Split-Bench Front Facing Fold Forward Seatback Rear Seat
- Analog Appearance- Carpet Floor Trim, Carpet And Rubber Mat- Compass
- Cruise Control w/Steering Wheel Controls- Day-Night Rearview Mirror
- Delayed Accessory Power- Driver And Passenger Visor Vanity Mirrors
- Fade-To-Off Interior Lighting- Front Center Armrest w/Storage- Front Cupholder
- Full Floor Console w/Locking Storage and 2 12V DC Power Outlets
- Instrument Panel Bin, Dashboard Storage, Driver And Passenger Door Bins
- Interior Trim -inc: Metal-Look Instrument Panel Insert, Metal-Look Door Panel Insert and Metal-Look Interior Accents
- Locking Cargo Area Concealed Storage- Locking Glove Box- Manual 1st Row Windows
- Manual Adjustable Front Head Restraints and Fixed Rear Head Restraints
- Manual Air Conditioning- Manual Rear Windows and Removable 3rd Row Windows
- Manual Tilt Steering Column- Outside Temp Gauge- Rear Cupholder

Option Packages

Factory Installed Packages

["ENGINE: 3.6L V6 24V VVT"]

["TRANSMISSION: 5-SPEED AUTOMATIC (W5A580)", "-inc: Tip Start, Hill Descent Control"]

\$1,300

["MAX TOW PACKAGE", "-inc: Class II Receiver Hitch, 3.73 Rear Axle Ratio, Trailer Tow w/4-Pin Connector Wiring"]

\$745

["QUICK ORDER PACKAGE 24S", "-inc: Engine: 3.6L V6 24V VVT, Transmission: 5-Speed Automatic (W5A580), Auto Dim Mirror w/Reading Lamp, Tires: P255/75R17 OWL On/Off Road, Wheels: 17" x 7.5" Aluminum, Leather Wrapped Steering Wheel, Chrome/Leather Wrapped Shift Knob, Power Convenience Group, Front 1-Touch Down Power Windows, Security Alarm, Power Heated Mirrors, Power Locks, Remote Keyless Entry, Deep Tint Sunscreen Windows"]

- Sentry Key Immobilizer- Urethane Gear Shifter Material

Exterior

- Black Front Bumper w/2 Tow Hooks- Black Rear Bumper w/1 Tow Hook
- Sunrider Soft Top- Tires: P225/75R16 BSW On/Off Road
- Wheels: 16" x 7.0" Luxury Styled Steel- Aero-Composite Halogen Headlamps
- Black Door Handles- Black Fender Flares- Black Manual Side Mirrors w/Manual Folding
- Black Side Windows Trim- Body-Colored Grille- Clearcoat Paint
- Conventional Rear Cargo Access- Convertible w/Fixed Roll-Over Protection
- Front Fog Lamps- Full-Size Spare Tire Mounted Outside Rear
- Fully Galvanized Steel Panels- Light Tinted Glass- Manual Tailgate/Rear Door Lock
- Removable Rear Window- Steel Spare Wheel- Variable Intermittent Wipers

Safety

- Cloth Bucket Seats -inc: adjustable head restraints
- Full Carpet Floor Covering -inc: Carpet Front And Rear Floor Mats
- Gauges -inc: Speedometer, Odometer, Engine Coolant Temp, Tachometer, Trip Odometer and Trip Computer
- Trip Computer- 2 12V DC Power Outlets- 2 Seatback Storage Pockets
- 4-Way Passenger Seat -inc: Manual Recline and Fore/Aft Movement
- 6-Way Driver Seat -inc: Manual Recline, Height Adjustment and Fore/Aft Movement
- 60-40 Folding Split-Bench Front Facing Fold Forward Seatback Rear Seat
- Analog Appearance- Carpet Floor Trim, Carpet And Rubber Mat- Compass
- Cruise Control w/Steering Wheel Controls- Day-Night Rearview Mirror
- Delayed Accessory Power- Driver And Passenger Visor Vanity Mirrors
- Fade-To-Off Interior Lighting- Front Center Armrest w/Storage- Front Cupholder
- Full Floor Console w/Locking Storage and 2 12V DC Power Outlets
- Instrument Panel Bin, Dashboard Storage, Driver And Passenger Door Bins
- Interior Trim -inc: Metal-Look Instrument Panel Insert, Metal-Look Door Panel Insert and Metal-Look Interior Accents
- Locking Cargo Area Concealed Storage- Locking Glove Box- Manual 1st Row Windows
- Manual Adjustable Front Head Restraints and Fixed Rear Head Restraints
- Manual Air Conditioning- Manual Rear Windows and Removable 3rd Row Windows
- Manual Tilt Steering Column- Outside Temp Gauge- Rear Cupholder
- Sentry Key Immobilizer- Urethane Gear Shifter Material

Mechanical

- Transmission: 6-Speed Manual (NSG370)- 1000# Maximum Payload
- 160 Amp Alternator- 2 Skid Plates- 22.5 Gal. Fuel Tank- 3.21 Rear Axle Ratio
- 4-Wheel Disc Brakes w/4-Wheel ABS, Front And Rear Vented Discs, Brake Assist and Hill Hold Control
- 600CCA Maintenance-Free Battery- Auto Locking Hubs
- Brake Actuated Limited Slip Differential- Engine Oil Cooler- Engine: 3.6L V6 24V VVT
- Front And Rear Anti-Roll Bars- GVWR: 5,400 lbs- Gas-Pressurized Shock Absorbers
- Hydraulic Power-Assist Steering- Leading Link Front Suspension w/Coil Springs
- Manual Transfer Case- Normal Duty Suspension- Part-Time Four-Wheel Drive
- Single Stainless Steel Exhaust- Solid Axle Rear Suspension w/Coil Springs
- Towing Equipment -inc: Trailer Sway Control

CONVERSION FINISHES]

\$3,000

["COPPERHEAD PEARLCOAT"]

["BLACK, CLOTH BUCKET SEATS", "-inc: adjustable head restraints"]

Option Packages Total

\$5,045

Auto Locators of Texas

Auto Locators of Texas

View this car on our website at alttx.com/7125323

Website: alttx.com

Phone: (972) 612-3100

Map: [4460 Tradition Trail, Plano, TX 75093](#)

