



2018 Cadillac Escalade ESV Premium Luxury

Our Price \$47,883

Retail Value \$51,320

View this vehicle on our website at altx.com

Auto Locators of Texas

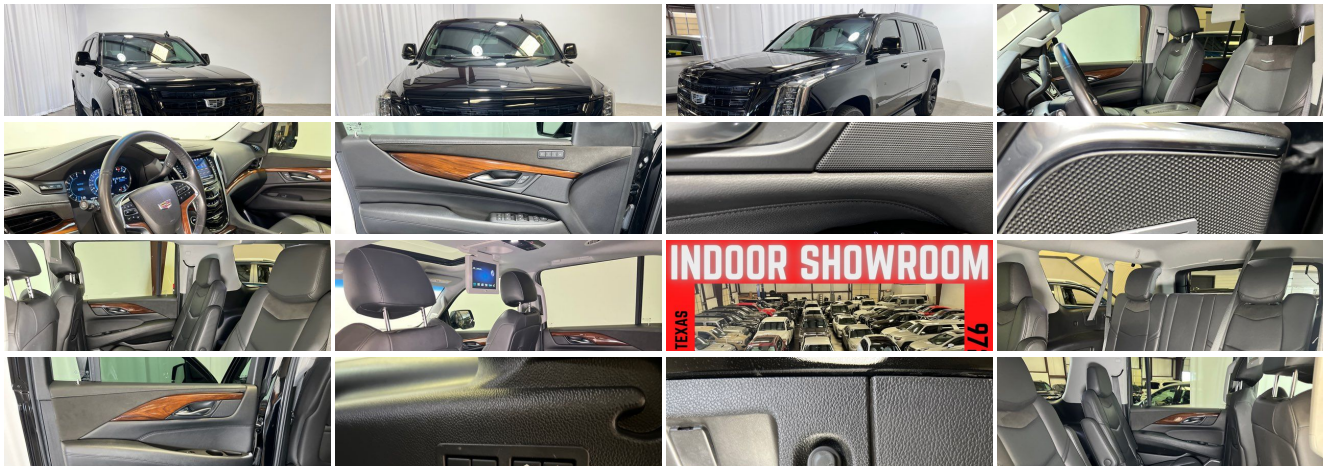
(972) 612-3100

4460 Tradition Trail , Plano, TX 75093

Photos

Details

Contact





Specifications:

Year:	2018
VIN:	1GYS3JKJ6JR208502
Make:	Cadillac
Stock:	4037
Model/Trim:	Escalade ESV Premium Luxury
Condition:	Pre-Owned
Body:	SUV
Exterior:	Black Raven
Engine:	["ENGINE, 6.2L V8 WITH ACTIVE FUEL MANAGEMENT", "Spark Ignition Direct Injection (SIDI) and Variable Valve Timing (VVT), includes aluminum block construction (420 hp [313.2 kW] @ 5600 rpm, 460 lb-ft of torque [621 N-m] @ 4100 rpm)"]
Interior:	Jet Black Leather
Transmission:	["TRANSMISSION, 10-SPEED AUTOMATIC", "electronically controlled with overdrive, tow/haul mode and tap up/tap down shifting"]
Mileage:	87,558
Drivetrain:	Rear Wheel Drive
Economy:	City 14 / Highway 23

Vehicle Description

****MIDNIGHT BLACK OUT PACKAGE**** Just listed 2018 Cadillac Escalade PREMIUM ESV with 22 INCH RIMS, NAVIGATION, DVD'S, QUAD CAPTAIN CHAIRS, HEATED and AC COOLED SEATS! Buy this loaded NON SMOKER with confidence since it is a CARFAX CERTIFIED vehicle. Sporty black exterior with black LEATHER interior. Plug in your iPhone and use the Apple Car Play feature to see text messages and your favorite apps. DUAL DVD PLAYERS to keep the kids quiet on those long road trips. HEATED SEATS for those cold winter mornings and AC COOLED seats for those hot summer days. Factory navigation so you never get lost. POWER SUNROOF for those perfect summer nights. Loaded with 22 INCH RIMS, SECOND ROW CAPTAIN CHAIRS, POWER RUNNING BOARDS, upgraded BOSE stereo, side blind spot monitors, push button start, third row power folding seats, tow package, keyless entry with alarm and freezing cold AC. Third row seating so you can haul all your friends and family. Rear power lift gate and remote engine start for you convenience. Rear back up camera and Bluetooth for your safety. To many options to list. A REAL HEAD TURNER! This non smoker is in great condition inside and out. Just serviced with new fluids, BAND NEW FRONT and REAR SHOCKS and SITTING ON BRAND NEW 22 INCH TIRES! Ready to go. Drive in luxury and style with all the bells and whistles. This loaded Escalade ESV is wholesale priced below book so do not wait. It will not last! Do you want your next car buying experience to be an enjoyable and a memorable one? After 23 years in business, we've streamlined the buying process to be completely hassle and stress free. Why wait? We can have you in and out in as little as 45 minutes from the time you step into the dealership to the time you drive away in your new vehicle. Our customers great reviews have a common theme, great prices, quality vehicles and an efficient no hassle environment. Just look on Yelp and Google to read what our 10,000 plus happy customers are saying about Auto Locators of Texas! Auto Locators of Texas has been in business for over 23 years, and we pride ourselves on our friendly, no-pressure approach to selling vehicles. We offer a wide selection of the highest quality used cars, trucks, and SUV's. Our finance department works hard to find every customer the best deal. Trade-ins are always welcome so we can answer your question of "what is my trade worth". We offer a wide variety of services from detailing, ding repair, body shop, service, and extended service contracts. Please take a look at our website at www.alttx.com. WE HOPE TO SEE YOU SOON!

Installed Options

Interior

- Climate control, tri-zone automatic with individual climate settings for driver, front passenger and rear passengers
- Door locks, power programmable includes lockout protection and delayed locking
- Driver Information Center with programmable personalization features such as door locking and unlocking, a trip computer with trip odometer and individual tire pressure read outs, fuel information such as range, average mpg, gallons used and oil life, and a message center that displays dozens of warning messages such as low fuel and door ajar
- Floor mats, color-keyed carpeted first and second row- Lock control, side door, electric
- Memory settings includes two "presets" for driver seat adjuster, outside rearview mirrors, power tilt/telescoping steering column and power-adjustable pedals
- Pedals, power-adjustable for accelerator and brake
- Seats, second row bucket, power configurable /May be substituted for (ATT) second row

Option Packages

Factory Installed Packages

["ENGINE, 6.2L V8 WITH ACTIVE FUEL MANAGEMENT", "Spark Ignition Direct Injection (SIDI) and Variable Valve Timing (VVT), includes aluminum block construction (420 hp [313.2 kW] @ 5600 rpm, 460 lb-ft of torque [621 N-m] @ 4100 rpm)"]

["TRANSMISSION, 10-SPEED AUTOMATIC", "electronically controlled with overdrive, tow/haul mode and tap up/tap down shifting"]

["SEATS, SECOND ROW BUCKET, POWER CONFIGURABLE"]

- Seats, second row bucket, power configurable (may be substituted for (A1) second row 60/40 split-folding bench seats.)
- Seats, third row 60/40 split-bench, power, fold flat
- Steering column, power tilt and telescoping
- Steering wheel, power-tilt, color-keyed with wood and leather-wrapped rim, locking
- Tow/haul mode selector, button located at end of shift lever
- Windows, power all doors, comfort open (auto express down via key fob)
- Windows, power, with driver and front passenger Express-Up/Down and rear passengers Express-Down
- Accents, interior, piano black and chrome finish - Adaptive Remote Start
- Cargo net, rear
- Console, floor with covered storage, large and small storage bins, dual cup holders, electronic climate controls and second row heated seat controls (inside console: auxiliary power outlet, two USB ports and auxiliary audio port), 110-volt outlet and auxiliary power outlet on the backside of console
- Console, overhead
- Cruise control, adaptive, full-speed range, switchable to regular cruise control
- Defogger, rear-window electric- Floor covering, color-keyed carpeting
- Gauge cluster, 12" color, reconfigurable with Driver Information Center
- Head-Up Display, 4-color, reconfigurable
- Lighting, interior, door handle release, door storage, console and footwell
- Lighting, interior, with theater dimming- Power outlet, 110-volt- Rear Camera Washer
- Remote Keyless Entry, passive entry, extended range
- Seat adjuster, front passenger 12-way power
- Seats, front bucket with leather seating surfaces, driver and front passenger, 12-way power seat adjusters including 4-way power lumbar control, independently heated driver and front passenger seat cushions and seatbacks (three settings) and 2-position driver memory
- Seats, heated and cooled driver and front passenger - Seats, heated second row
- Sensor, inclination
- Sensor, vehicle interior movement will detect movement within the cabin of the vehicle
- Steering wheel controls, mounted audio and Driver Information Center controls
- Steering wheel, heated
- Theft-deterrent alarm system, content theft alarm, self-powered horn
- Theft-deterrent system, unauthorized entry, engine immobilizer
- Universal Home Remote includes garage door opener, 3-channel programmable
- Wireless Charging located on the top of the center console (The system wirelessly charges one PMA- or Qi-compatible mobile device. To check for phone or other device compatibility, see my.cadillac.com/learn.)

Exterior

- Assist steps, running side board
- Sunroof, power, tilt-sliding with express-open/-close and wind deflector (Not included when (A4K) sunroof delete is ordered.)
- Tire, spare P265/70R17 all-season, blackwall
- Wheel, full-size spare, 17" (43.2 cm) steel (2WD models only.)
- Wheels, 22" x 9" (55.9 cm x 22.9 cm) 7-spoke aluminum with premium paint and chrome inserts (Upgradeable to (RPT) 22" x 9" 6-spoke chrome multi-featured design wheels, (RVA) 22" x 9" dual 7-spoke Ultra Bright finish aluminum wheels with premium paint, (SHO) 22" x 9" 12-spoke polished aluminum wheels or (SMI) 22" x 9" 6-spoke chrome wheels.)
- Door handles, illuminated- Glass, acoustic, laminated, windshield and front door glass
- Glass, deep-tinted (all windows, except light-tinted glass on windshield and driver- and front passenger-side glass)
- Hands-Free Liftgate, open and close, programmable memory height
- Headlamps, LED high beam/low beam, light pipe- Headlamps, automatic on/off
- IntelliBeam, automatic high beam on/off- Lamps, front cornering
- Luggage rack, roof-mounted, chrome
- Mirrors, outside heated power-adjustable, power-folding and driver-side auto-dimming, color-keyed with integrated turn signal indicators, ground illumination and programmable to provide curb view when in reverse
- Moldings, bodyside, chrome- Shutters, front active aero- Spare tire lock, hoist shaft
- Tail lamps, LED illumination- Tires, P285/45R22 all-season, blackwall
- Windshield, solar absorbing- Wiper, rear intermittent with washer
- Wipers, front intermittent, Rainsense

Safety

- Climate control, tri-zone automatic with individual climate settings for driver, front passenger and rear passengers
- Door locks, power programmable includes lockout protection and delayed locking
- Driver Information Center with programmable personalization features such as door locking and unlocking, a trip computer with trip odometer and individual tire pressure read outs, fuel information such as range, average mpg, gallons used and oil life, and a message center that displays dozens of warning messages such as low fuel and door ajar
- Floor mats, color-keyed carpeted first and second row- Lock control, side door, electric

[SEATS, SECOND ROW BUCKET, POWER CONFIGURABLE]

["ASSIST STEPS, POWER-RETRACTABLE, RUNNING SIDE BOARD", "with LED lighting"]

\$1,750

["GM COMMERCIAL LINK - 1 YEAR OF SERVICE", "includes 12 months of GM Commercial Link service. Provides access and reporting for key vehicle information such as speed, location and maintenance through website and mobile application. Eligible customers must sign up for an account at www.gmcommerciallink.com in order take advantage of this 12 month offer. The Commercial Link service is included in the price of the vehicle. Total service duration is 12 months. Non-Transferrable. Non-Refundable."]

\$120

["LPO, 22" (55.9 CM) 5-SPOKE HIGH-GLOSS BLACK WHEELS WITH ULTRA BRIGHT MACHINED FINISH"]

\$1,995

["ONSTAR 18 MONTHS OF ONSTAR PROTECTION SERVICE.", "Provides 18 months of Protection service in addition to the 6 months of standard Guidance plan trial service (12 months for Cadillac) that is included in the price of the vehicle (trial excludes Hands-Free Calling minutes). Total service duration is 24 months (30 months for Cadillac)."]

["BLACK RAVEN"]

["PREMIUM LUXURY PREFERRED EQUIPMENT GROUP", "Includes Standard Equipment"]

["CADILLAC USER EXPERIENCE WITH EMBEDDED NAVIGATION", "AM/FM stereo with 8" diagonal color information display featuring touch response, haptic feedback, gesture recognition, Natural Voice Recognition, Phone Integration for Apple CarPlay and Android Auto capability for compatible phone, Collection and Teen Driver. Five USB ports, including one in the articulating storage door/bin and auxiliary audio port"]

["JET BLACK, LEATHER SEATING SURFACES", "with mini perforated inserts"]

["SEATS, FRONT BUCKET", "with leather seating surfaces, driver and front passenger, 12-way power seat adjusters including 4-way power lumbar control, independently heated driver and front passenger seat cushions and seatbacks (three settings) and 2-position driver memory"]

Option Packages Total

\$3,865

- Memory settings includes two "presets" for driver seat adjuster, outside rearview mirrors, power tilt/telescoping steering column and power-adjustable pedals
- Pedals, power-adjustable for accelerator and brake
- Seats, second row bucket, power configurable (May be substituted for (ATT) second row 60/40 split-folding bench seats.)
- Seats, third row 60/40 split-bench, power, fold flat
- Steering column, power tilt and telescoping
- Steering wheel, power-tilt, color-keyed with wood and leather-wrapped rim, locking
- Tow/haul mode selector, button located at end of shift lever
- Windows, power all doors, comfort open (auto express down via key fob)
- Windows, power, with driver and front passenger Express-Up/Down and rear passengers Express-Down
- Accents, interior, piano black and chrome finish - Adaptive Remote Start
- Cargo net, rear
- Console, floor with covered storage, large and small storage bins, dual cup holders, electronic climate controls and second row heated seat controls (inside console: auxiliary power outlet, two USB ports and auxiliary audio port), 110-volt outlet and auxiliary power outlet on the backside of console
- Console, overhead
- Cruise control, adaptive, full-speed range, switchable to regular cruise control
- Defogger, rear-window electric- Floor covering, color-keyed carpeting
- Gauge cluster, 12" color, reconfigurable with Driver Information Center
- Head-Up Display, 4-color, reconfigurable
- Lighting, interior, door handle release, door storage, console and footwell
- Lighting, interior, with theater dimming- Power outlet, 110-volt- Rear Camera Washer
- Remote Keyless Entry, passive entry, extended range
- Seat adjuster, front passenger 12-way power
- Seats, front bucket with leather seating surfaces, driver and front passenger, 12-way power seat adjusters including 4-way power lumbar control, independently heated driver and front passenger seat cushions and seatbacks (three settings) and 2-position driver memory
- Seats, heated and cooled driver and front passenger - Seats, heated second row
- Sensor, inclination
- Sensor, vehicle interior movement will detect movement within the cabin of the vehicle
- Steering wheel controls, mounted audio and Driver Information Center controls
- Steering wheel, heated
- Theft-deterrent alarm system, content theft alarm, self-powered horn
- Theft-deterrent system, unauthorized entry, engine immobilizer
- Universal Home Remote includes garage door opener, 3-channel programmable
- Wireless Charging located on the top of the center console (The system wirelessly charges one PMA- or Qi-compatible mobile device. To check for phone or other device compatibility, see my.cadillac.com/learn.)

Mechanical

- Brakes, VAC power, 17" disc, with Adaptive Cruise Control - Keyless start, push button
- Transmission, 10-speed automatic electronically controlled with overdrive, tow/haul mode and tap up/tap down shifting
- Air cleaner, high-capacity- Alternator, 170 amps- Automatic load leveling, rear
- Brake, parking, electronic powered- Brakes, 4-wheel antilock, 4-wheel disc
- Brakes, DuraLife rotors- Cooling, external engine oil cooler, heavy-duty
- Cooling, external transmission oil cooler, heavy-duty air-to-oil
- Differential, heavy-duty locking rear
- Engine, 6.2L V8 with Active Fuel Management Spark Ignition Direct Injection (SIDI) and Variable Valve Timing (VVT), includes aluminum block construction (420 hp [313.2 kW] @ 5600 rpm, 460 lb-ft of torque [621 N-m] @ 4100 rpm)
- Fueling system, capless- GVWR, 7300 lbs. (3311 kg) (2WD models only.)
- Rear axle, 3.23 ratio- Rear wheel drive- Steering, Electronic Power Steering (EPS)
- Suspension, Magnetic Ride Control with selectable sport mode
- Trailing equipment, heavy-duty includes trailing hitch platform, 7-wire harness with independent fused trailing circuits and 7-way sealed connector

Auto Locators of Texas

Auto Locators of Texas

View this car on our website at alttx.com/7125207

Website: alttx.com

Phone: (972) 612-3100

Map: [4460 Tradition Trail, Plano, TX 75093](#)

