

# 2003 Chevrolet Tahoe LT

View this car on our website at [paniaguaautos.com/7125102/ebrochure](http://paniaguaautos.com/7125102/ebrochure)

paniaguaautos.com  
(706)529-1919



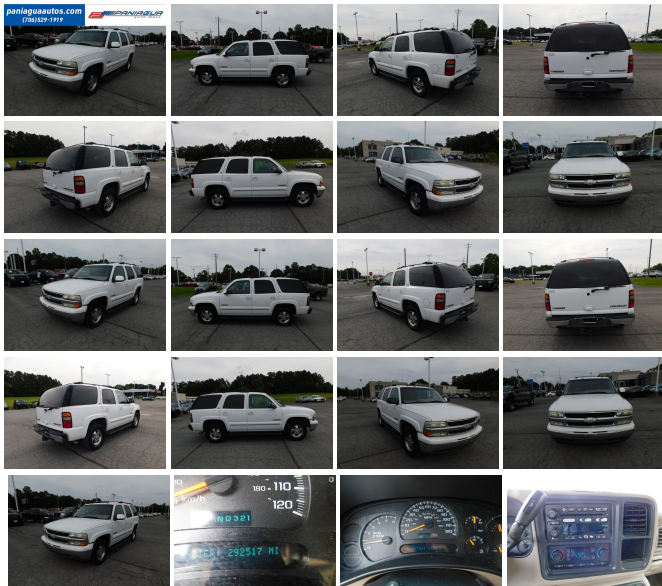
Our Price **\$4,995**



## Specifications:

**Year:** 2003  
**VIN:** 1GNEC13Z23J245045  
**Make:** Chevrolet  
**Stock:** 9027  
**Model/Trim:** Tahoe LT  
**Condition:** Pre-Owned  
**Body:** SUV  
**Exterior:** White  
**Engine:** ENGINE, VORTEC 5300 V8 SFI BI-FUEL  
**Interior:** Tan Leather  
**Transmission:** AUTOMATIC  
**Mileage:** 292,517  
**Drivetrain:** Rear Wheel Drive  
**Economy:** City 14 / Highway 19

2003 CHEVROLET TAHOE 5.3L V8 AUTOMATIC LEATHER  
INTERIOR ALL POWER STOP BYU TODAY AND CHECK OUT OUR  
MOST RECENT INVENTORY



2003 Chevrolet Tahoe LT

Paniagua Auto Mall - 706-529-1919 & 423-472-4045 - View this car on our website at [paniaguaautos.com/7125102/ebrochure](http://paniaguaautos.com/7125102/ebrochure)

## Our Location :



2003 Chevrolet Tahoe LT

Paniagua Auto Mall - 706-529-1919& 423-472-4045 - View this car on our website at [paniaguaautos.com/7125102/ebrochure](http://paniaguaautos.com/7125102/ebrochure)

## Installed Options

### Interior

- Air conditioning, tri-zone, automatic, individual climate settings for driver, right front passenger & rear passengers-inc: front & rear HVAC systems
- Assist handles, front passenger & outboard 2nd row seats
- Console, floor-inc: storage area, map pocket, coin holder, cupholders & integrated 2nd row audio controls
- Console, overhead mini-inc: map lights & rear seat HVAC controls
- Cruise control, electronic w/set & resume speed-inc: telltale in instrument panel cluster
- Defogger, rear-window, electric- Door locks, power programmable-inc: lockout protection
- Driver Message Center, monitors vehicle systems-inc: low fuel, transmission temperature, engine coolant, security, oil level, oil pressure & oil change
- Floor covering, color-keyed carpeting
- Floor mats, color-keyed, carpeted front & 2nd row, removable
- Headliner, Shale-colored cloth
- Heater & defogger-inc: front & side window defoggers, rear passenger heating ducts & heater, rear auxiliary
- Instrumentation, analog-inc: speedometer, odometer w/trip odometer, fuel level, voltmeter, engine temperature, oil pressure & tachometer
- Key, single, 2-sided
- Keyless entry, remote-inc: 2 transmitters, panic button & content theft alarm
- Lighting, dome lamp, driver & passenger side door switch w/delayed entry feature, cargo lamps, door handle or keyless remote activated illuminated entry, map lights in front & 2nd seat positions
- Mirror, inside rearview, electrochromic (light-sensitive auto-dimming), 8-point compass, outside temperature indicator & right front passenger air bag status
- OnStar, 1-year Safe & Sound Service-inc: Emergency Assistance Services, Air Bag Deployment Notification, Accident Assist, Roadside Assistance, Stolen Vehicle Tracking, Remote Diagnostics, Remote Door Lock & Unlock, Remote Vehicle Alert: horn & lights activation, online concierge services, Virtual Advisor & Personal Calling access
- Power outlets, auxiliary, 2 on instrument panel, 1 in cargo area, 12-volt
- Seats, front leather seating surfaces power reclining full-feature buckets -inc: adjustable head restraints, floor console, power lumbar, driver & passenger 8-way power adjustable, interior temperature control driver & passenger side windows & seats, etc.

- inboard armrests, heated driver & passenger seat cushion & seatbacks, power bolsters, 2-position driver-side memory & storage pockets, Pedals, power adjustable
- Seats, middle leather seating surfaces 60/40 split-folding bench, 3-passenger w/center armrest
- Smoker's Package-inc: ashtray & lighter
- Sound system feature, Bose Premium speaker system, 9 speakers-inc: subwoofer in center console
- Sound system feature, rear audio controls-inc: dual headphone jacks (headphones not included), power outlet & controls for volume, station selection & media
- Sound system, ETR AM/FM stereo w/in-dash 6-disc CD changer-inc: seek-&-scan, digital clock, auto-tone control, speed-compensated volume, TheftLock & Radio Data System (RDS)
- Steering column, Tilt-Wheel, adjustable-inc: brake/transmission shift interlock
- Steering wheel, leather-wrapped rim, Black
- Steering wheel, mounted controls-inc: audio & driver information center controls
- Theft-deterrent system, PASSLock II
- Visors, padded, Shale-colored, driver & passenger side w/cloth trim, extenders, illuminated vanity mirrors & corner storage pockets on back of visors
- Warning tones, headlamp on, key-in-ignition, driver safety belt unfasten, turn signal on
- Windows, power-inc: driver express-down & lockout features

---

## Exterior

- Air dam, Gray
- Assist steps, Black, mounted between front & rear wheels at bottom of rocker panel
- Body, rear cargo panel doors
- Bumper, front, chrome w/top pad (Please refer to Color Chart for Matte Black vs. color-keyed top pad)
- Bumper, rear, chrome step-inc: pad
- Daytime running lamps-inc: automatic exterior lamp control - Door handles, color-keyed
- Fog lamps, front, rectangular, halogen
- Glass, Solar-Ray deep tinted (all windows except light tinted glass on windshield, driver and front passenger)
- Grille, chrome surround
- Headlamps, dual halogen composite-inc: flash-to-pass feature & automatic lamp control
- Luggage rack, roof-mounted, Black, side rails only
- Mirrors, outside rearview, power folding, power adjustable, heated, color-keyed, driver side electrochromic (light-sensitive auto dimming), turn signal in glass, w/ground illumination & curb-tilt
- Moldings, bodyside (Please refer to Color Chart for Matte Black vs. color keyed moldings)
- Wipers, intermittent, front wet-arm w/pulse washers

---

## Safety

- Air conditioning, tri-zone, automatic, individual climate settings for driver, right front passenger & rear passengers-inc: front & rear HVAC systems
- Assist handles, front passenger & outboard 2nd row seats
- Console, floor-inc: storage area, map pocket, coin holder, cupholders & integrated 2nd row audio controls
- Console, overhead mini-inc: map lights & rear seat HVAC controls
- Cruise control, electronic w/set & resume speed-inc: telltale in instrument panel cluster
- Defogger, rear-window, electric - Door locks, power programmable-inc: lockout protection
- Driver Message Center, monitors vehicle systems-inc: low fuel, transmission temperature, engine coolant, security, oil level, oil pressure & oil change
- Floor covering, color-keyed carpeting
- Floor mats, color-keyed, carpeted front & 2nd row, removable
- Headliner, Shale-colored cloth
- Heater & defogger-inc: front & side window defoggers, rear passenger heating ducts & heater, rear auxiliary
- Instrumentation, analog-inc: speedometer, odometer w/trip odometer, fuel level, voltmeter, engine temperature, oil pressure & tachometer
- Key, single, 2-sided
- Keyless entry, remote-inc: 2 transmitters, panic button & content theft alarm
- Lighting, dome lamp, driver & passenger side door switch w/delayed entry feature, cargo lamps, door handle or keyless remote activated illuminated entry, map lights in front & 2nd seat positions
- Mirror, inside rearview, electrochromic (light-sensitive auto-dimming), 8-point compass, outside temperature indicator & right front passenger air bag status
- OnStar, 1-year Safe & Sound Service-inc: Emergency Assistance Services, Air Bag Deployment Notification, Accident Assist, Roadside Assistance, Stolen Vehicle Tracking, Remote Diagnostics, Remote Door Lock & Unlock, Remote Vehicle Alert: horn & lights activation, online concierge services, Virtual Advisor & Personal Calling access
- Power outlets, auxiliary, 2 on instrument panel, 1 in cargo area, 12-volt
- Seats, front leather seating surfaces power reclining full-feature buckets -inc: adjustable head restraints, floor console, power lumbar, driver & passenger 8-way power adjustable, inboard armrests, heated driver & passenger seat cushion & seatbacks, power bolsters, 2-position driver-side memory & storage pockets, Pedals, power adjustable
- Seats, middle leather seating surfaces 60/40 split-folding bench, 3-passenger w/center armrest

- Smoker's Package-inc: ashtray & lighter
- Sound system feature, Bose Premium speaker system, 9 speakers-inc: subwoofer in center console
- Sound system feature, rear audio controls-inc: dual headphone jacks (headphones not included), power outlet & controls for volume, station selection & media
- Sound system, ETR AM/FM stereo w/in-dash 6-disc CD changer-inc: seek-&-scan, digital clock, auto-tone control, speed-compensated volume, TheftLock & Radio Data System (RDS)
- Steering column, Tilt-Wheel, adjustable-inc: brake/transmission shift interlock
- Steering wheel, leather-wrapped rim, Black
- Steering wheel, mounted controls-inc: audio & driver information center controls
- Theft-deterrent system, PASSLock II
- Visors, padded, Shale-colored, driver & passenger side w/cloth trim, extenders, illuminated vanity mirrors & corner storage pockets on back of visors
- Warning tones, headlamp on, key-in-ignition, driver safety belt unfasten, turn signal on
- Windows, power-inc: driver express-down & lockout features

## Mechanical

- 26.0 gallon fuel tank- Alternator, 145 amps
- Battery, heavy-duty, 600 cold-cranking amps-inc: rundown protection & retained accessory power
- Brakes, 4-wheel antilock, 4-wheel disc
- Engine, Vortec 5300 V8 SFI (285 HP [212.6 kW] @ 5200 rpm, 325 lb.-ft. [441 N-m] @ 4000 rpm)
- GVWR, 6500 lbs. (2948 kg)- Rear axle, 3.42 ratio- Rear wheel drive- Steering, power
- Suspension Package, Premium Smooth Ride
- Suspension, front, independent torsion bar, & stabilizer bar
- Suspension, rear, multi-link w/coil springs- Tire carrier, outside spare, lockable
- Tire carrier, outside spare, winch-type mounted under frame at rear, w/tire
- Tires, P265/70R16, all-season touring, blackwall- Trailering wiring harness, 7-wire
- Transmission, 4-speed automatic, electronically controlled w/overdrive & tow/haul mode
- Wheels, 4 - 16" x 7" (40.6 cm x 17.8 cm) 6-lug bright machined aluminum-inc: steel spare

## Option Packages

### Factory Installed Packages

-  
ENGINE, VORTEC 5300 V8 SFI BI-FUEL  
 , capable of running on unleaded  
 or up to 85% ethanol (285 HP  
 [212.6 kW] @ 5200 rpm, 325  
 lb.-ft. [441 N-m] @ 4000 rpm)

We sale used vehicles as is no warranty. We sale extended warranties ask one of our sales rep. for details.

Paniagua Auto Mall

[paniaguaautos.com](http://paniaguaautos.com)

706-529-1919& 423-472-4045

1776 E. Walnut Ave

Dalton, Georgia 30721

© 2023 AutoRevo - All rights reserved. - Powered by AutoRevo