



## 2021 Chevrolet Silverado 2500HD LT

**Our Price \$66,995**

View this vehicle on our website at [billyraytaylorautosales.com](http://billyraytaylorautosales.com)

**Billy Ray Taylor**  
**Auto Sales**

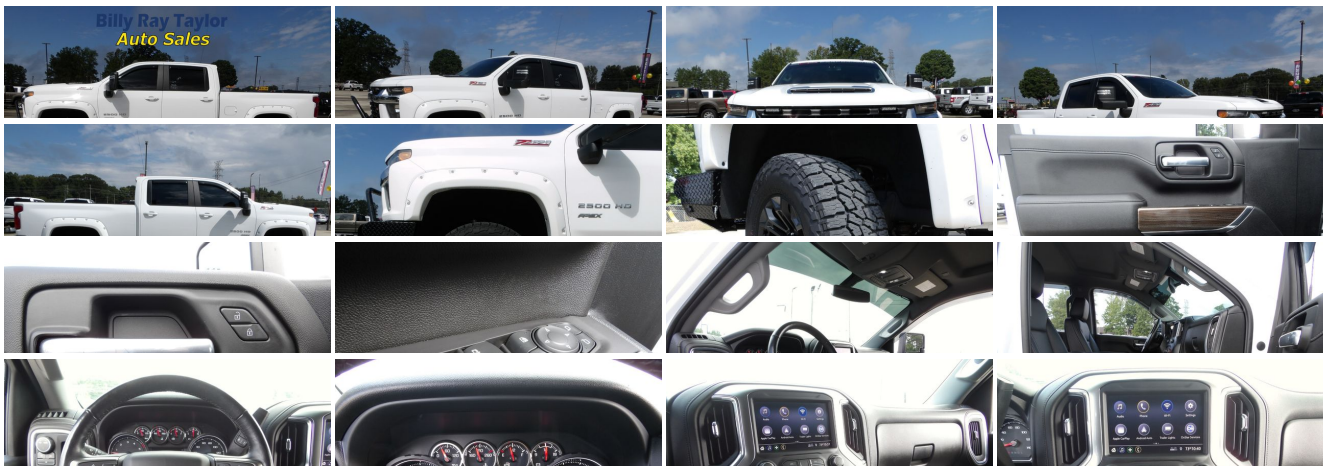
(855) 978-7392

5355 AL Highway 157 , Cullman, AL 35058

Photos

Details

Contact





## Specifications:

<b>Year:</b>	2021
<b>VIN:</b>	1GC4YNEY6MF139221
<b>Make:</b>	Chevrolet
<b>Stock:</b>	ST22104
<b>Model/Trim:</b>	Silverado 2500HD LT
<b>Condition:</b>	Pre-Owned
<b>Body:</b>	Pickup Truck
<b>Exterior:</b>	Summit White
<b>Engine:</b>	ENGINE, DURAMAX 6.6L TURBO-DIESEL V8
<b>Interior:</b>	Jet Black Leather
<b>Mileage:</b>	45,115
<b>Drivetrain:</b>	4 Wheel Drive

## Vehicle Description

### Installed Options

#### Interior

- Air conditioning, single-zone- Cloth seat trim- Door locks, power
- Floor mats, rubberized vinyl, front (Deleted when LPO floor liners are ordered. Not available with (BKF) Floor liners.)
- Floor mats, rubberized-vinyl rear (Not available with Regular Cab models. Deleted when LPO floor liners are ordered. Not available with (BKE) Floor liners.)
- Power outlet, front auxiliary, 12-volt- Remote Keyless Entry with 2 transmitters
- Seat, rear 60/40 folding bench (folds up), 3-passenger (includes child seat top tether anchor) (Requires Crew Cab or Double cab model.)
- Seats, front 40/20/40 split-bench with upper covered armrest storage (Not available with (PCL) Convenience Package.)
- Steering column, Tilt-Wheel, manual with wheel locking security feature
- USB ports, 2 (first row) located on instrument panel
- Air vents, rear, heating/cooling (Not available on Regular Cab models.)
- Assist handles front A-pillar mounted for driver and passenger, rear B-pillar mounted
- Chevrolet Connected Access capable (Subject to terms. See onstar.com or dealer for details.)
- Compass located in instrument cluster
- Cruise control, electronic with set and resume speed, steering wheel-mounted
- Driver Information Center, 4.2" diagonal color display includes driver personalization
- Exterior Temperature Display located in radio display
- Floor covering, color-keyed carpeting
- Instrument cluster 6-gauge cluster featuring speedometer, fuel level, engine temperature, tachometer, voltage and oil pressure
- Mirror, inside rearview, manual tilt
- Rear Seat Reminder (Requires Crew Cab or Double Cab model.)
- Seat adjuster, driver 4-way manual- Seat adjuster, passenger 4-way manual
- Steering wheel, urethane- Window, power front, drivers express up/down
- Window, power front, passenger express down
- Windows, power rear, express down (Not available with Regular Cab models.)

#### Exterior

- Headlamps, halogen reflector with halogen Daytime Running Lamps
- Mirrors, outside power-adjustable vertical trailering with heated upper glass, lower convex mirrors, integrated turn signals, manual folding/extending (extends 3.31" [84.25mm])
- Tire, spare LT245/75R17E all-season, blackwall (Included and only available with (QH) LT245/75R17E all-season, blackwall tires with (E63) Durabed, pickup bed. Available to order when (ZW9) pickup bed delete and (QH) LT245/75R17E all-season, blackwall tires are ordered)
- Tires, LT245/75R17E all-season, blackwall- Wheels, 17" (43.2 cm) machined aluminum

- BedStep, Black integrated on forward portion of bed on driver and passenger side (Deleted when (ZW9) pickup bed delete is ordered.)
- Bumper, front chrome- Bumper, rear chrome
- Cargo tie downs (12), fixed rated at 500 lbs per corner (Deleted with (ZW9) pickup bed delete.)
- CornerStep, rear bumper- Door handles, body-color- Glass, deep-tinted
- Grille (Chrome front grille bar with "CHEVROLET". Includes molded in color Black grille inserts with small Gold bowtie emblem.)
- Lamps, cargo area, cab mounted integrated with center high mount stop lamp, with switch in bank on left side of steering wheel.
- Mirror caps, Black- Moldings, beltline, Black- Tailgate and bed rail protection cap, top
- Tailgate, gate function manual with EZ Lift includes power lock and release (Deleted when (ZW9) pickup bed delete is ordered.)
- Taillamps with incandescent tail, stop and reverse lights
- Tire carrier lock keyed cylinder lock that utilizes same key as ignition and door (Deleted with (ZW9) pickup bed delete.)

## Safety

- Air conditioning, single-zone- Cloth seat trim- Door locks, power
- Floor mats, rubberized vinyl, front (Deleted when LPO floor liners are ordered. Not available with (BKF) Floor liners.)
- Floor mats, rubberized-vinyl rear (Not available with Regular Cab models. Deleted when LPO floor liners are ordered. Not available with (BKE) Floor liners.)
- Power outlet, front auxiliary, 12-volt- Remote Keyless Entry with 2 transmitters
- Seat, rear 60/40 folding bench (folds up), 3-passenger (includes child seat top tether anchor) (Requires Crew Cab or Double cab model.)
- Seats, front 40/20/40 split-bench with upper covered armrest storage (Not available with (PCL) Convenience Package.)
- Steering column, Tilt-Wheel, manual with wheel locking security feature
- USB ports, 2 (first row) located on instrument panel
- Air vents, rear, heating/cooling (Not available on Regular Cab models.)
- Assist handles front A-pillar mounted for driver and passenger, rear B-pillar mounted
- Chevrolet Connected Access capable (Subject to terms. See onstar.com or dealer for details.)
- Compass located in instrument cluster
- Cruise control, electronic with set and resume speed, steering wheel-mounted
- Driver Information Center, 4.2" diagonal color display includes driver personalization
- Exterior Temperature Display located in radio display
- Floor covering, color-keyed carpeting
- Instrument cluster 6-gauge cluster featuring speedometer, fuel level, engine temperature, tachometer, voltage and oil pressure
- Mirror, inside rearview, manual tilt
- Rear Seat Reminder (Requires Crew Cab or Double Cab model.)
- Seat adjuster, driver 4-way manual- Seat adjuster, passenger 4-way manual
- Steering wheel, urethane- Window, power front, drivers express up/down
- Window, power front, passenger express down
- Windows, power rear, express down (Not available with Regular Cab models.)

## Mechanical

- Engine, 6.6L V8 with Direct Injection and Variable Valve Timing, gasoline, (401 hp [299 kW] @ 5200 rpm, 464 lb-ft of torque [629 N-m] @ 4000 rpm)
- Recovery hooks, front, frame-mounted, Black (Not included when (VQY) Chrome recovery hooks, LPO is ordered.)
- Transmission, 6-speed automatic, heavy-duty (Requires (L8T) 6.6L V8 gas engine.)
- Air filter, heavy-duty- Air filtration monitoring
- Alternator, 170 amps (Requires (L8T) 6.6L V8 gas engine.)
- Auto-locking rear differential
- Battery, heavy-duty 720 cold-cranking amps/80 Amp-hr maintenance-free with rundown protection and retained accessory power (Included and only available with (L8T) 6.6L V8 gas engine.)
- Brake lining wear indicator
- Brakes, 4-wheel antilock, 4-wheel disc with DURALIFE rotors
- Capless Fuel Fill (Requires (L8T) 6.6L V8 gas engine. Not available with (ZW9) pickup bed delete.)
- Cooling, auxiliary external transmission oil cooler- Cooling, external engine oil cooler
- Durabed, pickup bed- Four wheel drive
- Frame, fully-boxed, hydroformed front section and a fully-boxed stamped rear section
- GVWR, 10,450 lbs. (4740 kg) (Included and only available with CK20743 model and (L8T) 6.6L V8 gas engine with 17" wheels or CK20903 model and (L8T) 6.6L V8 gas engine with 18" or 20" wheels.)
- Rear axle, 3.73 ratio (Requires (L8T) 6.6L V8 gas engine. Not available with (L5P) Duramax 6.6L Turbo-Diesel V8 engine.)
- Steering, Recirculating Ball with smart flow power steering system
- Suspension Package- Trailer brake controller, integrated

Transfer case, 4-speed electronic shift with push-button controls (Requires 4WD)

- 1 transfer case, two-speed electronic shift with push button controls (Requires 4WD models.)

Options and features are automatically generated from the VIN number. We strive to verify all options, features, and trim levels are correct but errors can be made. Please verify all options are correct prior to purchase of vehicle.

Billy Ray Taylor Auto Sales

Billy Ray Taylor Auto Sales

View this car on our website at [billyraytaylorautosales.com/7123226](https://billyraytaylorautosales.com/7123226)

Website: [billyraytaylorautosales.com](https://billyraytaylorautosales.com)

Phone: [\(855\) 978-7392](tel:(855)978-7392)

Map: [5355 AL Highway 157, Cullman, AL 35058](#)

