

2018 Ford F-150 4x4 XLT

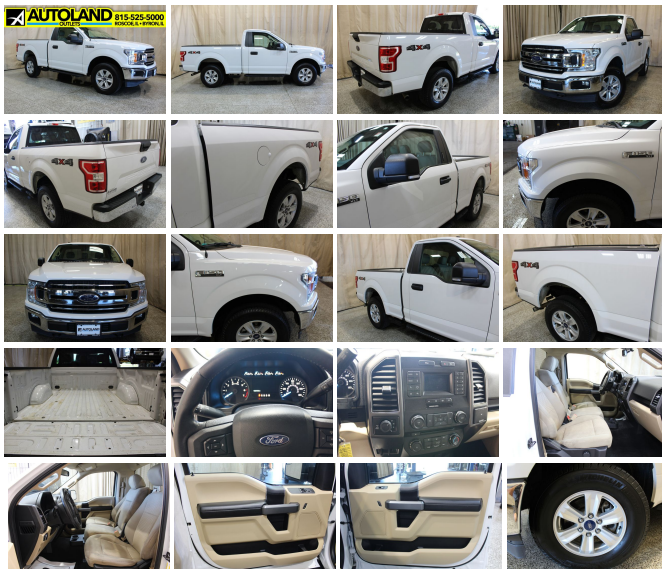
View this car on our website at autolandoutlets.com/7122403/ebrochure



Our Price **\$27,948**

Specifications:

Year:	2018
VIN:	1FTMF1E55JFD17555
Make:	Ford
Stock:	11294
Model/Trim:	F-150 4x4 XLT
Condition:	Pre-Owned
Body:	Pickup Truck
Exterior:	Oxford White
Engine:	ENGINE: 5.0L V8
Interior:	Tan Cloth
Transmission:	TRANSMISSION: ELECTRONIC 10-SPEED AUTOMATIC
Mileage:	102,318
Drivetrain:	4 Wheel Drive
Economy:	City 16 / Highway 22



Just arrived!! Vehicle has been detailed and inspected runs and drives great!! Autoland Outlets is proud to offer this 2018 Ford F-150 4x4 Reg.Cab. Options include 3.31 Rear Ratio, Box Side Steps, Tailgate Steps, Integrated Brake Controller, 5.0 with a 10 speed transmission. Call

speed transmission. Call Autoland Outlets at 1-815- 525-5000

Many of our trucks are Rust Free Southern Units!!! We Buy-Sell-Trade call us for Availability and Pricing 815-525-5000. Dealer Shall in no way be held liable for any errors or omissions to be found on these webpages. All prices are plus any applicable state taxes and service fees. We will do our best to keep all the information current and accurate, however the dealership should be contacted for final pricing and availability. Autoland Outlets is the midwest Premier Truck Store. Over 250 Trucks in Stock!! Over 150 are Diesels! 3/4 Tons, 1 Tons, Regular, Extended and Crew Cabs. Plus: Dump Trucks, Utility Trucks, and much more! Many New Trucks Arriving Daily!!! Thousands of Satisfied Customers! Over 25 Years in Business. Updated Daily 888-240-8674 ILLINOIS WARRANTY MAY APPLY CALL DEALERSHIP FOR DETAILS

2018 Ford F-150 4x4 XLT

Autoland Outlets - 877-319-6060 - View this car on our website at autolandoutlets.com/7122403/ebrochure

Our Location :



2018 Ford F-150 4x4 XLT

Autoland Outlets - 877-319-6060 - View this car on our website at autolandoutlets.com/7122403/ebrochure

Installed Options

Interior

- 2 12V DC Power Outlets- 2 Seatback Storage Pockets
- 4-Way Driver Seat -inc: Manual Recline and Fore/Aft Movement
- 4-Way Passenger Seat -inc: Manual Recline and Fore/Aft Movement - Air Filtration

- Analog Appearance
- Cloth 40/20/40 Front Seat -inc: 4-way adjustable driver/passenger headrests, manual driver/passenger lumbar and armrest w/storage
- Compass- Cruise Control w/Steering Wheel Controls- Day-Night Rearview Mirror
- Delayed Accessory Power- Driver And Passenger Visor Vanity Mirrors
- Fade-To-Off Interior Lighting- Front Cupholder
- Full Carpet Floor Covering -inc: Carpet Front Floor Mats - Full Cloth Headliner
- Gauges -inc: Speedometer, Odometer, Voltmeter, Oil Pressure, Engine Coolant Temp, Tachometer, Transmission Fluid Temp and Trip Odometer
- Glove Box
- Instrument Panel Bin, Dashboard Storage, Driver And Passenger Door Bins and 1st Row Underseat Storage
- Interior Trim -inc: Metal-Look Instrument Panel Insert, Cabback Insulator and Chrome Interior Accents
- Keypad- Manual Air Conditioning- Manual Tilt/Telescoping Steering Column
- Outside Temp Gauge- Perimeter Alarm- Pickup Cargo Box Lights
- Power 1st Row Windows w/Driver And Passenger 1-Touch Up/Down
- Power Door Locks w/Autolock Feature- Rear Map Lights
- Remote Keyless Entry w/Integrated Key Transmitter, Illuminated Entry and Panic Button
- Securilock Anti-Theft Ignition (pats) Immobilizer- Urethane Gear Shifter Material

Exterior

- Aluminum Panels
- Auto On/Off Aero-Composite Halogen Daytime Running Lights Preference Setting Headlamps w/Delay-Off
- Black Door Handles- Black Power Side Mirrors w/Convex Spotter and Manual Folding
- Black Side Windows Trim- Cargo Lamp w/High Mount Stop Light
- Chrome Front Bumper w/Body-Colored Rub Strip/Fascia Accent and 2 Tow Hooks
- Chrome Grille- Chrome Rear Step Bumper- Clearcoat Paint- Deep Tinted Glass
- Fixed Rear Window- Front Fog Lamps
- Full-Size Spare Tire Stored Underbody w/Crankdown- Perimeter/Approach Lights
- Regular Box Style- Steel Spare Wheel- Tailgate Rear Cargo Access
- Tailgate/Rear Door Lock Included w/Power Door Locks- Tires: P265/70R17 OWL A/T
- Variable Intermittent Wipers- Wheels: 17" Silver Painted Aluminum

Safety

- 2 12V DC Power Outlets- 2 Seatback Storage Pockets
- 4-Way Driver Seat -inc: Manual Recline and Fore/Aft Movement
- 4-Way Passenger Seat -inc: Manual Recline and Fore/Aft Movement - Air Filtration
- Analog Appearance
- Cloth 40/20/40 Front Seat -inc: 4-way adjustable driver/passenger headrests, manual driver/passenger lumbar and armrest w/storage
- Compass- Cruise Control w/Steering Wheel Controls- Day-Night Rearview Mirror
- Delayed Accessory Power- Driver And Passenger Visor Vanity Mirrors
- Fade-To-Off Interior Lighting- Front Cupholder
- Full Carpet Floor Covering -inc: Carpet Front Floor Mats - Full Cloth Headliner
- Gauges -inc: Speedometer, Odometer, Voltmeter, Oil Pressure, Engine Coolant Temp, Tachometer, Transmission Fluid Temp and Trip Odometer
- Glove Box
- Instrument Panel Bin, Dashboard Storage, Driver And Passenger Door Bins and 1st Row Underseat Storage
- Interior Trim -inc: Metal-Look Instrument Panel Insert, Cabback Insulator and Chrome Interior Accents
- Keypad- Manual Air Conditioning- Manual Tilt/Telescoping Steering Column
- Outside Temp Gauge- Perimeter Alarm- Pickup Cargo Box Lights
- Power 1st Row Windows w/Driver And Passenger 1-Touch Up/Down
- Power Door Locks w/Autolock Feature- Rear Map Lights
- Remote Keyless Entry w/Integrated Key Transmitter, Illuminated Entry and Panic Button
- Securilock Anti-Theft Ignition (pats) Immobilizer- Urethane Gear Shifter Material

Mechanical

- 1730# Maximum Payload- 200 Amp Alternator- 23 Gal. Fuel Tank- 3.55 Axle Ratio
- 4-Wheel Disc Brakes w/4-Wheel ABS, Front And Rear Vented Discs, Brake Assist, Hill Hold Control and Electric Parking Brake
- 70-Amp/Hr 610CCA Maintenance-Free Battery w/Run Down Protection
- Auto Locking Hubs- Double Wishbone Front Suspension w/Coil Springs
- Electric Power-Assist Speed-Sensing Steering- Electronic Transfer Case
- Engine: 3.3L V6 PFDI -inc: auto start-stop technology and flex-fuel capability
- Front Anti-Roll Bar- GVWR: 6,120 lbs Payload Package- HD Shock Absorbers
- Part-Time Four-Wheel Drive- Single Stainless Steel Exhaust
- Solid Axle Rear Suspension w/Leaf Springs- Towing Equipment -inc: Trailer Sway Control

- Trailer Wiring Harness- Transmission w/SelectShift Sequential Shift Control
- Transmission: Electronic 6-Speed Automatic -inc: selectable drive modes: normal/tow-haul/sport

Option Packages

Factory Installed Packages

ENGINE: 5.0L V8

-inc: auto start-stop technology and flex-fuel capability, 3.31 Axle Ratio, GVWR: 6,400 lbs Payload Package

\$1,995

TRANSMISSION: ELECTRONIC 10-SPEED AUTOMATIC

-inc: selectable drive modes: normal/tow-haul/snow-wet/EcoSelect/sport

BLACK PLATFORM RUNNING BOARDS

\$250

BOX SIDE STEPS

\$325

INTEGRATED TRAILER BRAKE CONTROLLER

\$275

TAILGATE STEP W/TAILGATE LIFT ASSIST

\$375

ELECTRONIC LOCKING W/3.31 AXLE RATIO

\$420

EQUIPMENT GROUP 301A MID

-inc: Radio: Single-CD/SiriusXM w/5 Speakers, a 6-month prepaid subscription. Service is not available in Alaska and Hawaii. Subscriptions to all SiriusXM services are sold by SiriusXM after trial period. If you decide to continue service after your trial, the subscription plan you choose will automatically renew thereafter and you will be charged according to your chosen payment method at then-current rates. Fees and taxes apply. To cancel you must call SiriusXM at 1-866-635-2349. See SiriusXM Customer Agreement for complete terms at www.siriusxm.com. All fees and programming subject to change. Sirius, XM and all related marks and logos are trademarks of Sirius XM Radio Inc. Class IV Trailer Hitch Receiver, towing capability up to 5,000 lbs, on 3.3L V6 PFDI engine (99B) and 2.7L EcoBoost engine (99P) or up to 7,000 lbs, on 3.5L EcoBoost engine (99G) and 5.0L V8 engine (99S), smart trailer tow connector and 4-pin/7-pin wiring harness, Leather-Wrapped Steering Wheel,

\$2,100

MEDIUM LIGHT CAMEL, CLOTH 40/20/40 FRONT SEAT

-inc: 4-way adjustable driver/passenger headrests

Option Packages Total
\$5,740

Autoland Outlets
autolandoutlets.com
877-319-6060
13156 Love Rd
Roscoe, IL 61073

© 2022 AutoRevo - All rights reserved. - Powered by AutoRevo