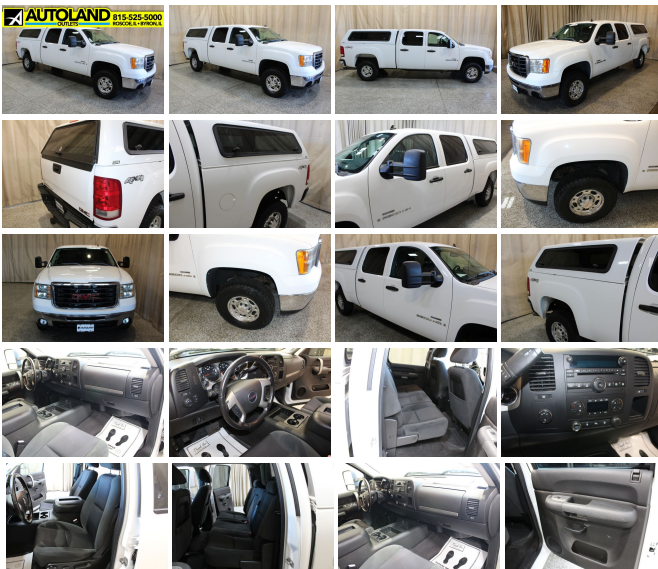


2008 GMC Sierra 2500HD Diesel 4x4 SLE2

View this car on our website at autolandoutlets.com/7122287/ebrochure



Our Price **\$21,746**

Specifications:

Year:	2008
VIN:	1GTHK23658F104940
Make:	GMC
Stock:	10833
Model/Trim:	Sierra 2500HD Diesel 4x4 SLE2
Condition:	Pre-Owned
Body:	Pickup Truck
Exterior:	Summit White
Engine:	ENGINE, DURAMAX 6.6L TURBO DIESEL V8
Interior:	Black Cloth
Transmission:	TRANSMISSION, ALLISON 1000 6-SPEED AUTOMATIC, ELECTRONICALLY CONTROLLED
Mileage:	169,217
Drivetrain:	4 Wheel Drive

Just arrived!! Vehicle has been detailed and inspected runs and drives great!! Autoland Outlets is proud to offer this 2008 Gmc Sierra 2500 Crew Cab Diesel 4x4. Options include Brake Controller, Power Pedals, Remote Start, 3.73 Rear Ratio, ARE Topper ..

the list goes on and on call Autoland Outlets at 1-815- 525-5000

Many of our trucks are Rust Free Southern Units!!! We Buy-Sell-Trade call us for Availability and Pricing 815-525-5000. Dealer Shall in no way be held liable for any errors or omissions to be found on these webpages. All prices are plus any applicable state taxes and service fees. We will do our best to keep all the information current and accurate, however the dealership should be contacted for final pricing and availability. Autoland Outlets is the midwest Premier Truck Store. Over 250 Trucks in Stock!! Over 150 are Diesels! 3/4 Tons, 1 Tons, Regular, Extended and Crew Cabs. Plus: Dump Trucks, Utility Trucks, and much more! Many New Trucks Arriving Daily!!! Thousands of Satisfied Customers! Over 25 Years in Business. Updated Daily 888-240-8674 ILLINOIS WARRANTY MAY APPLY CALL DEALERSHIP FOR DETAILS

2008 GMC Sierra 2500HD Diesel 4x4 SLE2

Autoland Outlets - 877-319-6060 - View this car on our website at autolandoutlets.com/7122287/ebrochure

Our Location :



2008 GMC Sierra 2500HD Diesel 4x4 SLE2

Autoland Outlets - 877-319-6060 - View this car on our website at autolandoutlets.com/7122287/ebrochure

Installed Options

Interior

- Air conditioning, dual-zone automatic climate control with individual climate settings for driver and right-front passenger (Not available with (VYU) Snow Plow Prep Package)
- Assist handle, front passenger (Also includes assist handle in the headliner)

- Assist handle, front passenger (Also includes rear assist handles in the headliner on Extended and Crew Cab models)
- Coat hooks, rear driver and passenger side
- Console, floor with storage compartment, 2 auxiliary power outlets and dual cup holders
- Cruise control, electronic with set and resume speed, located on steering wheel
- Cup holders, front (Also includes rear cupholders on Extended and Crew Cab models)
- Defogger, rear-window electric (Not available with (A48) power sliding rear window)
- Door locks, power
- Driver Information Center with odometer, trip odometer and message center (monitors numerous systems depending on vehicle equipment level including low fuel, turn signal "on", transmission temperature and oil change notification)
- Floor covering, color-keyed carpeting with rubberized vinyl floor mats (Extended and Crew Cab models also include rear floor mats)
- Headliner, Opal Gray-colored cloth with matching retainer moldings
- Instrumentation, analog with speedometer, fuel level, engine temperature, tachometer, voltmeter and oil pressure indicators
- Lighting, interior with dome and reading lights, illuminated entry feature and backlit instrument panel switches
- Mirror, inside rearview auto-dimming with 8-point compass and outside temperature display
- Power outlets, 2 auxiliary instrument panel-mounted with covers, 12-volt
- Remote vehicle starter prep package, includes Remote Keyless Entry (To enable remote start capability, new key fobs and vehicle reprogramming are required. Please see dealer for details. Remote Keyless Entry does not lock/unlock tailgate when (PDF) EZ-Lift Tailgate Package is ordered.)
- Seat adjuster, driver 6-way power- Seat adjuster, front passenger 6-way power
- Seat adjuster, manual lumbar control on the driver-side- Seat trim, Premium Cloth
- Seat, rear 60/40 folding bench (folds up), 3-passenger, folding (includes child seat top tether anchor)
- Seats, front bucket, includes 6-way power driver and front passenger seat adjusters, front passenger manual recline, front passenger manual lumbar, adjustable outboard head restraints and storage pockets
- Steering column, Tilt-Wheel, adjustable with brake/transmission shift interlock
- Steering wheel controls, mounted audio controls
- Steering wheel, leather-wrapped with theft-deterrent locking feature
- Tire Pressure Monitoring System (does not apply to spare tire)
- Visors, driver and front passenger, sliding with clip and illuminated vanity mirror on driver and passenger-side, Opal Gray-colored
- Warning tones, headlamp on, key-in-ignition, driver and passenger buckle up reminder and turn signal on
- Windows, power with driver Express-Down (Includes front passenger Express-down when (DL3) is ordered.)

Exterior

- Air dam, Black- Bumper, front chrome (Includes body-color bumper top caps)
- Bumper, rear chrome, step-style with pad (Requires RPO (E63) wideside pickup box)
- Daytime Running Lamps, with automatic exterior lamp control- Fog lamps, front, halogen
- Glass, Solar-Ray deep-tinted (all windows except light-tinted glass on windshield and driver-and front passenger-side glass) (With Regular Cab models, includes rear window. With Extended Cab models, includes rear and rear quarter windows. With Crew Cab models or (C49) rear-window defogger, includes light-tinted rear window. Included with (PCM) Work Truck Preferred Package.)
- Grille, chrome surround
- Headlamps, dual halogen composite with automatic exterior lamp control and flash-to-pass feature
- Lamps, dual cargo area lamps
- Mirrors, outside heated power-adjustable, Black, manual-folding (Upgradeable to (DL3) outside heated, power-adjustable, power-folding mirrors or (DPN) outside vertical camper mirrors)
- Moldings, bodyside, body-colored
- Spare tire lock, keyed cylinder lock that utilizes same key as ignition and door (Not available with (ZW9) pickup box delete or (VF7) rear bumper delete)
- Tailgate protection, top of tailgate protection cap
- Tire carrier, outside spare, winch-type mounted under frame at rear (Orders with (ZW9) Pickup box delete will not include a Spare Tire Carrier unless a spare tire is ordered.)
- Tires, LT245/75R16E all-season, blackwall (Not available with (PDL) Z71 Off-Road Package. Includes 5 tires with (E63) Wideside pickup box. Includes 4 tires with (ZW9) pickup box delete.)
- Wheels, 4-16" x 6.5" (40.6 cm x 16.5 cm) 8-lug polished forged aluminum, includes chrome center caps and steel spare (spare wheel will not cosmetically match the other 4 wheels) Spare not included with (ZW9) pickup box delete unless a spare tire is ordered (Upgradeable to (N89) 17" x 7.5" (43.2 cm x 19.1 cm) 8-lug bright machined aluminum wheels)
- Wipers, front intermittent wet-arm with pulse washers

Safety

- Air conditioning, dual-zone automatic climate control with individual climate settings for driver and right-front passenger (Not available with (VYU) Snow Plow Prep Package)
- Assist handle, front passenger (Also includes rear assist handles in the headliner on

Extended and Crew Cab models)

- Coat hooks, rear driver and passenger side
- Console, floor with storage compartment, 2 auxiliary power outlets and dual cup holders
- Cruise control, electronic with set and resume speed, located on steering wheel
- Cup holders, front (Also includes rear cupholders on Extended and Crew Cab models)
- Defogger, rear-window electric (Not available with (A48) power sliding rear window)
- Door locks, power
- Driver Information Center with odometer, trip odometer and message center (monitors numerous systems depending on vehicle equipment level including low fuel, turn signal "on", transmission temperature and oil change notification)
- Floor covering, color-keyed carpeting with rubberized vinyl floor mats (Extended and Crew Cab models also include rear floor mats)
- Headliner, Opal Gray-colored cloth with matching retainer moldings
- Instrumentation, analog with speedometer, fuel level, engine temperature, tachometer, voltmeter and oil pressure indicators
- Lighting, interior with dome and reading lights, illuminated entry feature and backlit instrument panel switches
- Mirror, inside rearview auto-dimming with 8-point compass and outside temperature display
- Power outlets, 2 auxiliary instrument panel-mounted with covers, 12-volt
- Remote vehicle starter prep package, includes Remote Keyless Entry (To enable remote start capability, new key fobs and vehicle reprogramming are required. Please see dealer for details. Remote Keyless Entry does not lock/unlock tailgate when (PDF) EZ-Lift Tailgate Package is ordered.)
- Seat adjuster, driver 6-way power- Seat adjuster, front passenger 6-way power
- Seat adjuster, manual lumbar control on the driver-side- Seat trim, Premium Cloth
- Seat, rear 60/40 folding bench (folds up), 3-passenger, folding (includes child seat top tether anchor)
- Seats, front bucket, includes 6-way power driver and front passenger seat adjusters, front passenger manual recline, front passenger manual lumbar, adjustable outboard head restraints and storage pockets
- Steering column, Tilt-Wheel, adjustable with brake/transmission shift interlock
- Steering wheel controls, mounted audio controls
- Steering wheel, leather-wrapped with theft-deterrent locking feature
- Tire Pressure Monitoring System (does not apply to spare tire)
- Visors, driver and front passenger, sliding with clip and illuminated vanity mirror on driver and passenger-side, Opal Gray-colored
- Warning tones, headlamp on, key-in-ignition, driver and passenger buckle up reminder and turn signal on
- Windows, power with driver Express-Down (Includes front passenger Express-down when (DL3) is ordered.)

Mechanical

- Air cleaner, high-capacity- Alternator, 125 amps
- Battery, heavy-duty 600 cold-cranking amps, maintenance-free with rundown protection and retained accessory power
- Cooling, auxiliary external transmission oil cooler, heavy-duty air-to-oil
- Cooling, external engine oil cooler, heavy-duty air-to-oil, integral to driver side of radiator tank
- Engine, Vortec 6.0L Variable Valve Timing V8 SFI (353 hp [262.8 kW] @ 5400 rpm, 373 lb-ft of torque [505.6 N-m] @ 4400 rpm)
- Exhaust, aluminized stainless-steel muffler and tailpipe- Four wheel drive
- Frame, hydroformed- GVWR, 9200 lbs. (4173 kg)- Pickup box, Wideside
- Rear axle, 3.73 ratio- Recovery hooks, front, frame-mounted
- Steering, power, recirculating ball
- Suspension Package, Handling/Trailer, heavy-duty, includes 35mm twin tube shock absorbers and 36mm front stabilizer bar
- Suspension, front independent, torsion bar
- Suspension, rear 2-stage multi-leaf springs, semi-elliptic
- Transfer case, electronic shift with rotary dial controls (Requires 4WD models)
- Transmission, 6-speed automatic, heavy-duty, electronically controlled with overdrive and tow/haul mode (Requires (LY6) Vortec 6.0L V8 SFI engine)

Option Packages

Factory Installed Packages

ENGINE, DURAMAX 6.6L TURBO DIESEL V8
B5-Diesel compatible (365 hp [271.7 kW] @ 3200 rpm, 660 lb-ft of torque [894.6 N-m] @ 1600 rpm) \$7,195

TRANSMISSION Allison 1000 6-

TRANSMISSION, Allison 1000 V
SPEED AUTOMATIC,
ELECTRONICALLY CONTROLLED
with overdrive, electronic engine
grade braking and tow/haul
mode \$1,200

BATTERY, HEAVY-DUTY DUAL 730
COLD-CRANKING AMPS,
MAINTENANCE-FREE
with rundown protection and
retained accessory power

BRAKE CONTROLLER, INTEGRATED
TRAILER \$200

CONVENIENCE PACKAGE \$560
includes (JF4) adjustable power
pedals, (AP3) remote vehicle
starter system and (UD7) Rear
Parking Assist

ENGINE BLOCK HEATER
\$75

MIRRORS, OUTSIDE HEATED POWER-
ADJUSTABLE, POWER-FOLDING AND
DRIVER-SIDE AUTO-DIMMING WITH
INTEGRATED TURN SIGNAL
INDICATORS

PEDALS, POWER-ADJUSTABLE FOR
ACCELERATOR AND BRAKE

REAR PARKING ASSIST, ULTRASONIC
with rearview LED display and
audible warning

REMOTE VEHICLE STARTER SYSTEM
includes Remote Keyless Entry

SKID PLATE PACKAGE, FRAME-
MOUNTED SHIELDS \$150
includes front underbody shield
starting behind front bumper
and running to first cross-
member, protecting front
underbody, oil pan, differential
case and transfer case

TRAILERING WIRING PROVISIONS, FOR
CAMPER, FIFTH WHEEL AND
GOOSENECK TRAILER \$35
includes additional 8-way wiring
harness routed to front of
pickup box

AIR CONDITIONING, SINGLE-ZONE
MANUAL FRONT CLIMATE CONTROL
-\$195

REAR AXLE, 3.73 RATIO

DIFFERENTIAL, HEAVY-DUTY
AUTOMATIC LOCKING REAR \$325
(Included with (PDL) Z71 Off-
Road Package)

SUMMIT WHITEPAINT, SOLID

-
SLE2 PREFERRED EQUIPMENT GROUP
includes standard equipment

-
**AUDIO SYSTEM, AM/FM STEREO WITH
MP3 COMPATIBLE CD PLAYER**

seek-and-scan, digital clock, auto-
tone control, Radio Data
System (RDS), speed-
compensated volume and
TheftLock

-
EBONY, PREMIUM CLOTH SEAT TRIM

-
SEATS, FRONT BUCKET

includes 6-way power driver and
front passenger seat adjusters,
front passenger manual
recline, front passenger
manual lumbar, adjustable
outboard head restraints and
storage pockets **\$800**

-
**SUSPENSION PACKAGE,
HANDLING/TRAILERING, HEAVY-
DUTY**

includes 35mm twin tube shock
absorbers and 36mm front
stabilizer bar

-
**TIRES, LT245/75R16E ALL-SEASON,
BLACKWALL**

Includes 5 tires with (E63)
Wideside pickup box. Includes
4 tires with (ZW9) pickup box
delete.)

-
**WHEELS, 4-16" X 6.5" (40.6 CM X 16.5
CM) 8-LUG POLISHED FORGED
ALUMINUM**

includes chrome center caps and
steel spare

-
Option Packages Total
\$10,345

Autoland Outlets
autolandoutlets.com
877-319-6060
13156 Love Rd
Roscoe, IL 61073

© 2023 AutoRevo - All rights reserved. - Powered by AutoRevo