

## 2018 Jeep All-New Sport

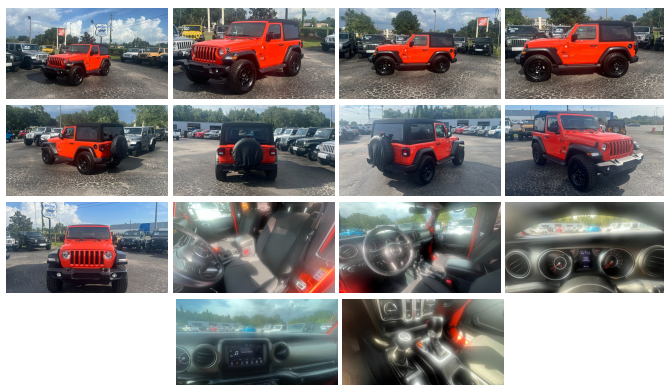
View this car on our website at [thejeepdepot.com/7122216/ebrochure](http://thejeepdepot.com/7122216/ebrochure)



Our Price **\$33,500**

### Specifications:

<b>Year:</b>	2018
<b>VIN:</b>	1C4GJXAG6JW276312
<b>Make:</b>	Jeep
<b>Model/Trim:</b>	All-New Sport
<b>Condition:</b>	Pre-Owned
<b>Body:</b>	SUV
<b>Exterior:</b>	Punkn Metallic Clearcoat
<b>Engine:</b>	ENGINE: 3.6L V6 24V VVT UPG I W/ESS
<b>Interior:</b>	Black
<b>Mileage:</b>	35,212
<b>Economy:</b>	City 17 / Highway 23



2018 Jeep All-New Sport

The Jeep Depot - (813) 399-2521 - View this car on our website at [thejeepdepot.com/7122216/ebrochure](http://thejeepdepot.com/7122216/ebrochure)

## Our Location :



2018 Jeep All-New Sport

The Jeep Depot - (813) 399-2521 - View this car on our website at [thejeepdepot.com/7122216/ebrochure](http://thejeepdepot.com/7122216/ebrochure)

## Installed Options

### Interior

- 2 12V DC Power Outlets- 2 Seatback Storage Pockets
- 4-Way Passenger Seat -inc: Manual Recline, Fore/Aft Movement and Manual Rear Seat Easy Entry
- 6-Way Driver Seat -inc: Manual Recline, Height Adjustment, Fore/Aft Movement, Manual Lumbar Support and Manual Rear Seat Easy Entry
- Air Conditioning- Analog Appearance- Cargo Space Lights
- Carpet Floor Trim, Carpet And Rubber Mat- Cloth Low-Back Bucket Seats- Compass
- Cruise Control w/Steering Wheel Controls- Day-Night Rearview Mirror
- Delayed Accessory Power- Fade-To-Off Interior Lighting- Front And Rear Map Lights
- Front Center Armrest w/Storage
- Front Seats w/Cloth Back Material and Manual Driver Lumbar
- Full Carpet Floor Covering -inc: Carpet Front Floor Mats
- Full Floor Console w/Locking Storage and 2 12V DC Power Outlets
- Gauges -inc: Speedometer, Odometer, Engine Coolant Temp, Tachometer, Engine Hour Meter, Trip Odometer and Trip Computer
- HVAC -inc: Console Ducts- Illuminated Front Cupholder- Illuminated Rear Cupholder
- Instrument Panel Bin, Dashboard Storage, Driver And Passenger Door Bins
- Interior Trim -inc: Metal-Look Instrument Panel Insert and Metal-Look Console Insert
- Locking Cargo Area Concealed Storage- Locking Glove Box
- Manual Adjustable Front Head Restraints and Foldable Rear Head Restraints
- Manual Tilt/Telescoping Steering Column- Outside Temp Gauge
- Proximity Key For Push Button Start Only - Redundant Digital Speedometer
- Removable Full Folding Bench Front Facing Tumble Forward Cloth Rear Seat
- Removable Rear Windows- Sentry Key Immobilizer- Systems Monitor- Trip Computer
- Urethane Gear Shifter Material- Vanity w/Driver And Passenger Auxiliary Mirror

### Exterior

- Aero-Composite Halogen Headlamps w/Delay-Off- Black Door Handles
- Black Front Floor Mats- Black Front Bumper w/2 Tow Hooks

- Black Fender Flares- Black Front Bumper w/2 Tow Hooks
- Black Rear Bumper w/1 Tow Hook- Black Side Windows Trim- Body-Colored Grille
- Clearcoat Paint- Conventional Rear Cargo Access- Deep Tint Sunscreen Windows
- Front Fog Lamps- Full-Size Spare Tire Mounted Outside Rear
- Galvanized Steel/Aluminum/Magnesium Panels
- Manual Convertible Top w/Fixed Roll-Over Protection
- Non-Lock Fuel Cap w/o Discriminator- Removable Rear Window
- Tires: 245/75R17 All Season- Variable Intermittent Wipers
- Wheels: 17" x 7.5" Tech Silver Aluminum

## Safety

- 2 12V DC Power Outlets- 2 Seatback Storage Pockets
- 4-Way Passenger Seat -inc: Manual Recline, Fore/Aft Movement and Manual Rear Seat Easy Entry
- 6-Way Driver Seat -inc: Manual Recline, Height Adjustment, Fore/Aft Movement, Manual Lumbar Support and Manual Rear Seat Easy Entry
- Air Conditioning- Analog Appearance- Cargo Space Lights
- Carpet Floor Trim, Carpet And Rubber Mat- Cloth Low-Back Bucket Seats- Compass
- Cruise Control w/Steering Wheel Controls- Day-Night Rearview Mirror
- Delayed Accessory Power- Fade-To-Off Interior Lighting- Front And Rear Map Lights
- Front Center Armrest w/Storage
- Front Seats w/Cloth Back Material and Manual Driver Lumbar
- Full Carpet Floor Covering -inc: Carpet Front Floor Mats
- Full Floor Console w/Locking Storage and 2 12V DC Power Outlets
- Gauges -inc: Speedometer, Odometer, Engine Coolant Temp, Tachometer, Engine Hour Meter, Trip Odometer and Trip Computer
- HVAC -inc: Console Ducts- Illuminated Front Cupholder- Illuminated Rear Cupholder
- Instrument Panel Bin, Dashboard Storage, Driver And Passenger Door Bins
- Interior Trim -inc: Metal-Look Instrument Panel Insert and Metal-Look Console Insert
- Locking Cargo Area Concealed Storage- Locking Glove Box
- Manual Adjustable Front Head Restraints and Foldable Rear Head Restraints
- Manual Tilt/Telescoping Steering Column- Outside Temp Gauge
- Proximity Key For Push Button Start Only - Redundant Digital Speedometer
- Removable Full Folding Bench Front Facing Tumble Forward Cloth Rear Seat
- Removable Rear Windows- Sentry Key Immobilizer- Systems Monitor- Trip Computer
- Urethane Gear Shifter Material- Vanity w/Driver And Passenger Auxiliary Mirror

## Mechanical

- 17.5 Gal. Fuel Tank- 180 Amp Alternator- 3 Skid Plates- 3.45 Rear Axle Ratio
- 4-Wheel Disc Brakes w/4-Wheel ABS, Front Vented Discs, Brake Assist and Hill Hold Control
- 50 State Emissions- 650CCA Maintenance-Free Battery w/Run Down Protection
- Auto Locking Hubs- Brake Actuated Limited Slip Differential
- Electro-Hydraulic Power Assist Steering- Engine Auto Stop-Start Feature
- Engine Oil Cooler- Engine: 3.6L V6 24V VVT UPG I w/ESS
- Front And Rear Anti-Roll Bars- GVWR: 4,900 lbs- Gas-Pressurized Shock Absorbers
- Leading Link Front Suspension w/Coil Springs- Manual Transfer Case
- Normal Duty Suspension- Part-Time Four-Wheel Drive- Single Stainless Steel Exhaust
- Solid Axle Rear Suspension w/Coil Springs- Towing Equipment -inc: Trailer Sway Control
- Transmission: 6-Speed Manual

## Option Packages

### Factory Installed Packages

-  
ENGINE: 3.6L V6 24V VVT UPG I W/ESS

The APR and default terms may not apply to all vehicles, to all sales or to all customers. The bank and lenders may or may not offer loans and financing based on each customers credit worthiness. This may or may not be out of the dealerships control.

---

The Jeep Depot

[thejeepdepot.com](http://thejeepdepot.com)

(813) 399-2521

6210 U.S. Hwy 301 South

Riverview, FL 33578

© 2022 AutoRevo - All rights reserved. - Powered by [AutoRevo](#)