

2021 GMC Sierra 2500HD SLT

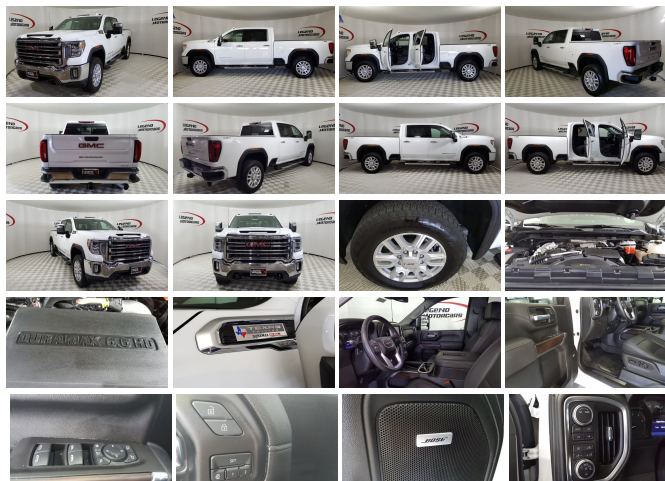
View this car on our website at legendmotorcarscarrollton.com/7122001/ebrochure



Sale Price **\$69,900**

Specifications:

Year:	2021
VIN:	1GT49NEY3MF203664
Make:	GMC
Stock:	C2043
Model/Trim:	Sierra 2500HD SLT
Condition:	Pre-Owned
Body:	Pickup Truck
Exterior:	Summit White
Engine:	DURAMAX 6.6L TURBO-DIESEL V8, B20-DIESEL
Interior:	Jet Black Leather
Transmission:	ALLISON 10-SPEED AUTOMATIC
Mileage:	19,000
Drivetrain:	4 Wheel Drive



2021 GMC Sierra 2500HD SLT

Legend Motorcars of Carrollton - 972-885-3268 - View this car on our website at legendmotorcarscarrollton.com/7122001/ebrochure

Vehicle History Report : as Of 06/10/2023

CARFAX

Snapshot

2021 GMC SIERRA 2500HD SLT



Accident reported



6 Service history records



2 Previous owners



Personal vehicle



Last owned in California



35,892 Last reported odometer reading



FREE CARFAX Report

See the full CARFAX Report for additional information

*carfax Snapshot is a reflection of available information on the date the report was pulled. carfax is constantly being updated with new information and is subject to change at any time.

Our Location :



2021 GMC Sierra 2500HD SLT

Legend Motorcars of Carrollton - 972-885-3268 - View this car on our website at [legendmotorcarscarrollton.com/7122001/ebrochure](https://www.legendmotorcarscarrollton.com/7122001/ebrochure)

Installed Options

Interior

- Air conditioning, dual-zone automatic climate control- Air vents, rear
- Assist handles front A-pillar mounted for driver and passenger, rear B-pillar mounted
- Compass, located in instrument cluster- Cruise control, steering wheel-mounted
- Defogger, rear-window electric- Door locks, power
- Driver Information Center, 4.2" diagonal color display includes driver personalization
- Driver memory recalls driver "presets" for power driver seat and outside mirrors
- Exterior Temperature Display, located in radio display
- Floor covering, color-keyed carpeting
- Floor mats, carpeted front (Deleted when LPO floor liners are ordered or (BKF) Premium Floor Liners are ordered.)
- Floor mats, carpeted rear (Deleted when LPO floor liners are ordered or (BKF) Premium Floor Liners are ordered.)
- GMC Connected Access capable (Subject to terms. See onstar.com or dealer for details)
- Instrument cluster, 6-gauge cluster featuring speedometer, fuel level, engine temperature, tachometer, voltage and oil pressure
- Keyless Open and Start- Mirror, inside rearview auto-dimming
- Power outlet, bed mounted, 120-volt (400 watts shared with (K14) instrument panel mounted power outlet)
- Power outlet, front auxiliary, 12-volt

- Power outlet, instrument panel, 120-volt (400 watts shared with (KC9) bed mounted power outlet)
- Power outlet, rear auxiliary, 12-volt- Rear Seat Reminder- Remote vehicle starter system
- Seat adjuster, driver 10-way power including lumbar
- Seat adjuster, passenger 10-way power including lumbar
- Seat trim, Perforated Leather-appointed front outboard seating positions
- Seat, Up-level Rear with Storage Package, 60/40 folding bench for Crew Cab models, includes full-length bench seat, seatback storage on left and right side, center fold out armrest with 2 cupholders, full cab width under-seat storage, (includes child seat top tether anchor)
- Seating, heated driver and front outboard passenger
- Seats, front 40/20/40 split-bench with covered armrest storage and under-seat storage (lockable) (Not available with (PCY) SLT Convenience Package, (PDB) SLT Premium Package or (PDC) Texas Edition SLT Premium Package.)
- Steering column, lock control, electrical
- Steering column, manual Tilt-Wheel and telescoping- Steering wheel audio controls
- Steering wheel, heated- Steering wheel, leather-wrapped
- Theft-deterrent system, unauthorized entry
- USB Ports (Instrument Panel with bench seat), 2 also includes 1 SD card reader (first row) With bucket seats, the USB ports move to the inside console and also includes auxiliary jack. (Bucket seats require (PCY) SLT Convenience Package.)
- USB ports, dual, charge-only (2nd row)- Window, power front, passenger express up/down
- Windows, power front, drivers express up/down- Windows, power rear, express down

Exterior

- Bed Step, Black integrated on forward portion of bed on driver and passenger side
- Bumper, front chrome lower- Bumper, rear chrome with bumper CornerSteps
- Cargo tie downs (12), fixed rated at 500 lbs per corner - CornerStep, rear bumper
- Door handles, chrome- Fog lamps, LED- Glass, deep-tinted
- Grille (Chrome surround with high gloss Black mesh and Chrome inserts.)
- Headlamps, LED reflector (high intensity) with LED turn signals and LED signature Daytime Running Lamps
- LED Cargo Area Lighting located in cargo bed activated with switch on center switch bank or key fob
- Lamps, cargo area cab mounted integrated with center high mount stop lamp, with switch in bank on left side of steering wheel
- Mirror caps, chrome
- Mirrors, outside power-adjustable vertical trailering with heated and auto-dimming upper glass, (driver and passenger) lower convex mirrors, turn signal indicators, puddle lamps, perimeter lighting, auxiliary lighting, power folding/extending (extends 3.31" [84.25mm])
- Moldings, beltline, stainless steel- Tailgate and bed rail protection caps, top
- Tailgate, GMC MultiPro Tailgate with six functional load/access features
- Tailgate, gate function manual with EZ Lift includes power lock and release, includes hitch area light
- Taillamps, LED signature taillight with LED stop and reverse light
- Tire carrier lock keyed cylinder lock that utilizes same key as ignition and door
- Tire, spare LT275/70R18 all-terrain, blackwall (Included and only available with (QF6) LT275/70R18E all-terrain, blackwall tires or (QF9) LT275/65R20 all-terrain, blackwall tires with (E63) pickup bed models. Available to order when (ZW9) pickup bed delete and (QF6) LT275/70R18E all-terrain, blackwall tires are ordered.)
- Tires, LT275/70R18E all-terrain, blackwall (Included with (RFX) X31 Off-Road and Protection Package.)
- Wheelhouse liners, rear
- Wheels, 18" (45.7 cm) machined aluminum wheel with Dark Grey metallic accents

Safety

- Air conditioning, dual-zone automatic climate control- Air vents, rear
- Assist handles front A-pillar mounted for driver and passenger, rear B-pillar mounted
- Compass, located in instrument cluster- Cruise control, steering wheel-mounted
- Defogger, rear-window electric- Door locks, power
- Driver Information Center, 4.2" diagonal color display includes driver personalization
- Driver memory recalls driver "presets" for power driver seat and outside mirrors
- Exterior Temperature Display, located in radio display
- Floor covering, color-keyed carpeting
- Floor mats, carpeted front (Deleted when LPO floor liners are ordered or (BKF) Premium Floor Liners are ordered.)
- Floor mats, carpeted rear (Deleted when LPO floor liners are ordered or (BKF) Premium Floor Liners are ordered.)
- GMC Connected Access capable (Subject to terms. See onstar.com or dealer for details)
- Instrument cluster, 6-gauge cluster featuring speedometer, fuel level, engine temperature, tachometer, voltage and oil pressure
- Keyless Open and Start- Mirror, inside rearview auto-dimming
- Power outlet, bed mounted, 120-volt (400 watts shared with (KI4) instrument panel mounted power outlet)
- Power outlet, front auxiliary, 12-volt

- Power outlet, instrument panel, 120-volt (400 watts shared with (KC9) bed mounted power outlet)
- Power outlet, rear auxiliary, 12-volt- Rear Seat Reminder- Remote vehicle starter system
- Seat adjuster, driver 10-way power including lumbar
- Seat adjuster, passenger 10-way power including lumbar
- Seat trim, Perforated Leather-appointed front outboard seating positions
- Seat, Up-level Rear with Storage Package, 60/40 folding bench for Crew Cab models, includes full-length bench seat, seatback storage on left and right side, center fold out armrest with 2 cupholders, full cab width under-seat storage, (includes child seat top tether anchor)
- Seating, heated driver and front outboard passenger
- Seats, front 40/20/40 split-bench with covered armrest storage and under-seat storage (lockable) (Not available with (PCY) SLT Convenience Package, (PDB) SLT Premium Package or (PDC) Texas Edition SLT Premium Package.)
- Steering column, lock control, electrical
- Steering column, manual Tilt-Wheel and telescoping- Steering wheel audio controls
- Steering wheel, heated- Steering wheel, leather-wrapped
- Theft-deterrent system, unauthorized entry
- USB Ports (Instrument Panel with bench seat), 2 also includes 1 SD card reader (first row) With bucket seats, the USB ports move to the inside console and also includes auxiliary jack. (Bucket seats require (PCY) SLT Convenience Package.)
- USB ports, dual, charge-only (2nd row)- Window, power front, passenger express up/down
- Windows, power front, drivers express up/down- Windows, power rear, express down

Mechanical

- Air filter, heavy-duty- Air filtration monitoring
- Alternator, 170 amps (Requires (L8T) 6.6L V8 gas engine.) - Auto-locking rear differential
- Battery, heavy-duty 720 cold-cranking amps/80 Amp-hr, maintenance-free with rundown protection and retained accessory power (Included and only available with (L8T) 6.6L V8 gas engine.)
- Brake lining wear indicator- Brakes, 4-wheel antilock, 4-wheel disc with DURALIFE rotors
- Capless Fuel Fill (Requires (L8T) 6.6L gas V8 engine. Not included with (ZW9) pickup bed delete.)
- Cooling, auxiliary external transmission oil cooler- Cooling, external engine oil cooler
- Engine, 6.6L V8 with Direct Injection and Variable Valve Timing, gasoline, (401 hp [299 kW] @ 5200 rpm, 464 lb-ft of torque [629 N-m] @ 4000 rpm)
- Four wheel drive
- Frame, fully-boxed, hydroformed front section and a fully-boxed stamped rear section
- GVWR, 10,650 lbs. (4831 kg) (Included and only available with TK20743 model and (L8T) 6.6L V8 gas engine with 18" or 20" wheels or TK20943 and (L8T) 6.6L V8 gas engine with 17" wheels.)
- In-vehicle Trailing App, System includes checklist, trailer maintenance reminders, trailer security alerts, trailer mileage, tow/haul reminder, trailer electrical diagnostics and Trailer Tire Pressure Monitor System module (Includes trailer tire pressure monitoring alert ONLY when (PTT) trailer tire pressure monitor system is factory ordered and sensors are installed. With (ZW9) pickup bed delete no provision for a trailer tire pressure monitor system will exist but all the other (U1D) features will remain.)
- Pickup bed includes bed assist step
- Rear axle, 3.73 ratio (Requires (L8T) 6.6L V8 gas engine.)
- Recovery hooks, front, frame-mounted, Black
- Steering, Digital Variable Steering Assist This system automatically adjusts steering based on speed, road conditions, and other inputs to reduce driver effort and fatigue
- Suspension Package (Not available with (X31) Off-Road Package.)
- Trailer brake controller, integrated
- Transfer case, two-speed active, electronic Autotrac with push button control (Requires 4WD models.)
- Transmission, 6-speed automatic, heavy-duty

Option Packages

Factory Installed Packages

-
 ENGINE, DURAMAX 6.6L TURBO-DIESEL V8, B20-DIESEL COMPATIBLE
 (445 hp [332 kW] @ 2800 rpm, \$9,890
 910 lb-ft of torque [1220 Nm] @ 1600 rpm)

-
 TRANSMISSION, ALLISON 10-SPEED AUTOMATIC

-
 ALTERNATOR, 220 AMPS
 \$150

DRIVER ALERT PACKAGE II

includes (UEU) Forward Collision Alert, (UFL) Lane Departure Warning, (UHY) Automatic Emergency Braking, (TO5) IntelliBeam and (UE4) Following Distance Indicator

\$645

ENGINE BLOCK HEATER
\$100

GOOSENECK / 5TH WHEEL PACKAGE

includes (Z6A) Gooseneck / 5th Wheel Prep Package.

\$1,340

HIGH IDLE SWITCH
\$200

SLT PREFERRED PACKAGE

includes (UVN) Bed View Camera, (UVS) HD Surround Vision with Two Trailer View Camera Provisions (IOT) 8" diagonal Premium GMC Infotainment with navigation, (UQA) Bose Premium Audio System and (K4C) Wireless Charging

\$1,670

SLT PREMIUM PACKAGE

includes (PCY) SLT Convenience Package, (PDY) SLT Preferred Package, (POB) Driver Alert Package I, (BVQ) 6" rectangular, cab length Chrome assist steps, and (CGN) spray-on bedliner. No substitutions to the above content.

\$5,420

TEXAS SLT PREMIUM PACKAGE

includes (PCY) SLT Convenience Package, (PDY) SLT Preferred Package, (POB) Driver Alert Package I, (BVQ) 6" rectangular, cab length Chrome assist steps, (CGN) spray-on bedliner and Texas Edition badging. No substitutions to the above content.

\$5,420

X31 OFF-ROAD AND PROTECTION PACKAGE

includes (X31) Off-Road suspension with Twin-tube Rancho shocks, (JHD) Hill Descent Control and (NZZ) skid plates (transfer case and oil pan), (CGN) spray-on bedliner, (RIA) All-weather floor liners, LPO and X31 badge

\$1,880

REAR AXLE, 3.42 RATIO

SUMMIT WHITE

SLT PREFERRED EQUIPMENT GROUP

includes standard equipment

AUDIO SYSTEM, PREMIUM GMC INFOTAINMENT SYSTEM WITH 8" DIAGONAL COLOR TOUCH-SCREEN

includes multi-touch display, AM/FM stereo, Bluetooth streaming audio for music and most phones; featuring wireless Android Auto and Apple CarPlay capability for compatible phones, advanced

voice recognition, in-vehicle
apps, personalized profiles for
infotainment and vehicle
settings

- _____
SEATS, FRONT BUCKET
with center console

- _____
WHEELS, 20" (50.8 CM) MACHINED
ALUMINUM WHEEL
with bright Silver accents \$800

- _____
Option Packages Total
\$27,515

Legend Motorcars of Carrollton
legendmotorcarscarrollton.com
972-885-3268

3231 Commander Dr
Carrollton, TX 75006

© 2023 AutoRevo - All rights reserved. - Powered by AutoRevo