

2022 Ford Bronco

Danny Diedrich 602-513-3298

View this car on our website at arizonaclassiccarsales.com/7121339/ebrochure



Our Price **\$99,950**

Retail Value **\$109,950**

Specifications:

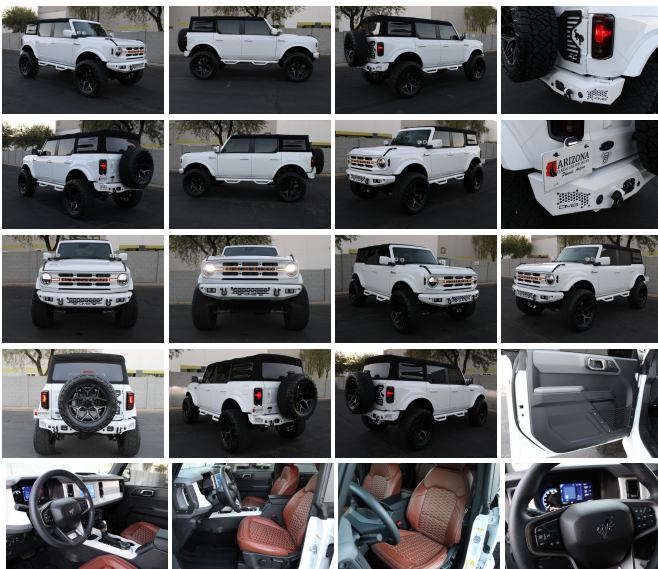
Year:	2022
VIN:	1FMDE5BH3NLB15809
Make:	Ford
Stock:	B15809
Model/Trim:	Bronco
Condition:	Pre-Owned
Body:	SUV
Exterior:	White
Engine:	ENGINE: 2.3L ECOBOOST I-4
Interior:	Brown
Mileage:	4,005
Drivetrain:	4 Wheel Drive
Economy:	City 17 / Highway 18

Take a 360 virtual tour!

****Unleash Your Adventurous Spirit with the Nearly-New 2022 Ford Bronco****

Ladies and Gentlemen, feast your eyes on the epitome of rugged elegance and unbridled power - the 2022 Ford Bronco with a mere 4,005 miles on the odometer. This isn't just a vehicle; it's a passport to a life less ordinary. Clad in a pristine white exterior that gleams under the sun, this Bronco stands as a beacon of adventure, ready to conquer terrains and turn heads.

Step inside, and you'll be enveloped in an interior that exudes sophistication with a



touch of the wild. The brown upholstery, of a material so meticulously crafted it's a secret unto itself, cradles you in comfort that feels both luxurious and adventure-ready. You'll find the perfect blend of durability and style, creating an environment that's as inviting for a night on the town as it is for a journey into the mountains.

Now, let's talk power. Under the hood lies the heart of this beast - the ENGINE: 2.3L EcoBoost I-4. This isn't just any engine; it's a marvel of modern engineering that delivers a surge of power whenever you demand it, while also providing the efficiency you crave. Whether you're navigating city streets or forging new paths off-road, this Bronco responds with a vitality that's nothing short of exhilarating.

But the 2022 Ford Bronco isn't just about raw power; it's about intelligent design and thoughtful features that enhance your driving experience. The manufacturer options and packages have been carefully selected to complement the Bronco's inherent capabilities, ensuring that every drive is as enjoyable as it is reliable. You'll discover that this vehicle isn't just equipped for adventures; it's designed for them.

Imagine yourself behind the wheel, the breeze whispering through the open windows as you chart a course for the unknown. The road ahead is yours to command, and with the 2022 Ford Bronco, you're not just driving; you're embarking on a journey. Each mile traveled is a story waiting to be told, a memory waiting to be made.

This nearly-new Bronco represents not just a purchase but an investment in your lifestyle. It's a commitment to spontaneity,

to exploration, to the belief that the best moments in life are those that take us by surprise. With such low mileage, this vehicle is a blank canvas awaiting your personal touch, ready to be part of the tales you'll tell for years to come.

Don't let this opportunity slip through your fingers. The 2022 Ford Bronco is more than a vehicle; it's a companion for the bold, the daring, the ones who refuse to settle for the mundane. Embrace the freedom, the power, and the style that only this Bronco can offer.

Act now, and take the first step towards a life filled with adventure. Your nearly-new 2022 Ford Bronco awaits, but it won't wait for long. Contact us today to claim your piece of the wild and experience what it means to truly live.

Don't let this one slip away.. Call or text today 602-513-3298

Vehicle History Report : as Of 05/16/2024



Snapshot

2022 FORD BRONCO



No accidents or damage reported to CARFAX



2 Service history records



At least 1 open recall



3 Previous owners



Types of owners: Personal, Commercial



3,896 Last reported odometer reading



FREE CARFAX Report

See the full CARFAX Report for additional information

*carfax Snapshot is a reflection of available information on the date the report was pulled. carfax is constantly being updated with new information and is subject to change at any time.

Our Location :



2022 Ford Bronco

Arizona Classic Car Sales - 602-513-3298 - View this car on our website at arizonaclassiccarsales.com/7121339/ebrochure

Installed Options

Interior

- 2 12V DC Power Outlets- 2 Seatback Storage Pockets- 3 12V DC Power Outlets
- 60-40 Folding Split-Bench Front Facing Manual Reclining Fold Forward Seatback Cloth Rear Seat
- 60-40 Folding Split-Bench Front Facing Manual Reclining Fold Forward Seatback Vinyl Rear Seat
- Carpet Floor Trim
- Cloth Bucket Seats -inc: 6-way manual driver and passenger including fore/aft, up/down and recline
- Connected Navigation -inc: 90-day trial, pinch-to-zoom capability, live traffic, predictive destinations and route guidance and 1 box search, Navigation services require SYNC4 and FordPass Connect, complimentary connect service and the FordPass app (see FordPass terms for details), Customer receives a complimentary 90-day trial of navigation services when an eligible vehicle is added to a member's FordPass account, Trial period begins on the new vehicle warranty start date, At the end of the complimentary period, navigation service will terminate, Connected service and features depend on compatible AT&T network availability, Evolving technology/cellular networks/vehicle capability may limit functionality and prevent operation of connected features, FordPass App, compatible w/select smartphone platforms, is available via a download, Message and data rates may apply
- Day-Night Auto-Dimming Rearview Mirror- Day-Night Rearview Mirror
- Driver And Passenger Viscor Vanity Mirrors w/Driver And Passenger Auxiliary Mirror

Option Packages

Factory Installed Packages

ENGINE: 2.3L ECOBOOST I-4

- Driver And Passenger Visor Vanity Mirrors w/Driver And Passenger Auxiliary Mirror
- Driver And Passenger Visor Vanity Mirrors w/Driver And Passenger Illumination, Driver And Passenger Auxiliary Mirror
- Dual Zone Front Automatic Air Conditioning- FOB Controls -inc: Remote Engine Start
- Full Carpet Floor Covering -inc: Carpet Front And Rear Floor Mats
- Full Carpet Floor Covering -inc: Carpet Front Floor Mats
- Full Floor Console w/Locking Storage, Mini Overhead Console and 2 12V DC Power Outlets
- Full Floor Console w/Locking Storage, Mini Overhead Console w/Storage and 2 12V DC Power Outlets
- Full Floor Console w/Locking Storage, Mini Overhead Console w/Storage and 3 12V DC Power Outlets
- Full Vinyl/Rubber Floor Covering -inc: Carpet Front Floor Mats
- Gauges -inc: Speedometer, Odometer, Engine Coolant Temp, Tachometer, Inclinator, Trip Odometer and Trip Computer
- Gauges -inc: Speedometer, Odometer, Voltmeter, Engine Coolant Temp, Tachometer, Inclinator, Trip Odometer and Trip Computer
- Heated Cloth Bucket Seats -inc: 6-way manual driver and passenger including fore/aft, up/down and recline
- Interior Trim -inc: Metal-Look Door Panel Insert and Metal-Look Interior Accents
- Interior Trim -inc: Metal-Look Instrument Panel Insert, Metal-Look Door Panel Insert and Metal-Look Interior Accents
- Interior Trim -inc: Metal-Look Interior Accents - Leather/Metal-Look Gear Shifter Material
- Leather/Metal-Look Steering Wheel- Manual Air Conditioning
- Marine Grade Vinyl Bucket Seats -inc: 6-way manual driver and passenger including fore/aft, up/down and recline and front driver/passenger seat back MOLLE strap system
- Power 1st Row Windows w/Driver And Passenger 1-Touch Up/Down
- Power Door Locks w/Autolock Feature
- Power Rear Windows and Removable 3rd Row Windows
- Proximity Key For Doors And Push Button Start
- Proximity Key For Push Button Start Only
- Remote Keyless Entry w/Integrated Key Transmitter, Illuminated Entry, Illuminated Ignition Switch and Panic Button
- Seats w/Cloth Back Material- Smart Device Remote Engine Start
- Urethane Gear Shifter Material- Vinyl/Rubber Floor Trim- Air Filtration
- Cargo Space Lights- Compass- Cruise Control w/Steering Wheel Controls
- Dashboard Storage, Driver / Passenger And Rear Door Bins and 2nd Row Underseat Storage
- Delayed Accessory Power- Digital/Analog Appearance- Driver Foot Rest- Driver Seat
- Fade-To-Off Interior Lighting- Front Center Armrest- Front Cupholder- Front Map Lights
- HVAC -inc: Underseat Ducts- Immobilizer- Locking Glove Box
- Manual Adjustable Front Head Restraints and Foldable Rear Head Restraints
- Manual Tilt/Telescoping Steering Column- Outside Temp Gauge- Passenger Seat
- Perimeter Alarm- Rear Cupholder- Redundant Digital Speedometer- Systems Monitor
- Tracker System- Trip Computer

Exterior

- Aluminum Spare Wheel- Black Door Handles- Black Fender Flares
- Black Front Bumper w/2 Tow Hooks- Black Grille
- Black Power Heated Side Mirrors w/Convex Spotter and Manual Folding
- Black Rear Step Bumper w/1 Tow Hook - Body-Colored Door Handles
- Body-Colored Fender Flares
- Body-Colored Power Heated Side Mirrors w/Convex Spotter and Manual Folding
- Ford Co-Pilot360 - Autolamp Auto On/Off Aero-Composite Led Low/High Beam Auto High-Beam Daytime Running Lights Preference Setting Headlamps w/Delay-Off
- Front Fog Lamps- Gray Grille- Headlights-Automatic Highbeams- LED Brakelights
- Manual Convertible Top w/Fixed Roll-Over Protection- Steel Spare Wheel
- Tailgate/Rear Door Lock Included w/Power Door Locks
- Tires: LT265/70R17 A/T -inc: full size spare tire w/TPMS
- Tires: P255/70R16 A/S -inc: full size spare tire w/TPMS
- Tires: P255/70R18 A/T -inc: full size spare tire w/TPMS
- Tires: P255/75R17 A/T -inc: full size spare tire w/TPMS- Wheels w/Hub Covers
- Wheels: 16" Bright Polished Silver-Painted Steel Wheels: 17" Black Gloss-Painted Steel
- Wheels: 17" Carbonized Gray-Painted Aluminum
- Wheels: 18" Bright Machined Aluminum -inc: Black high gloss-painted
- Black Side Windows Trim- Clearcoat Paint- Conventional Rear Cargo Access
- Fully Galvanized Steel Panels- Light Tinted Glass- Removable Rear Window
- Spare Tire Mounted Outside Rear- Variable Intermittent Wipers

Safety

- 2 12V DC Power Outlets- 2 Seatback Storage Pockets- 3 12V DC Power Outlets
- 60-40 Folding Split-Bench Front Facing Manual Reclining Fold Forward Seatback Cloth Rear Seat

60-40 Folding Split-Bench Front Facing Manual Reclining Fold Forward Seatback Cloth

- 60-40 Folding Split-Bench Front Facing Manual Reclining Fold Forward Seatback Vinyl Rear Seat
- Carpet Floor Trim
- Cloth Bucket Seats -inc: 6-way manual driver and passenger including fore/aft, up/down and recline
- Connected Navigation -inc: 90-day trial, pinch-to-zoom capability, live traffic, predictive destinations and route guidance and 1 box search, Navigation services require SYNC4 and FordPass Connect, complimentary connect service and the FordPass app (see FordPass terms for details), Customer receives a complimentary 90-day trial of navigation services when an eligible vehicle is added to a member's FordPass account, Trial period begins on the new vehicle warranty start date, At the end of the complimentary period, navigation service will terminate, Connected service and features depend on compatible AT&T network availability, Evolving technology/cellular networks/vehicle capability may limit functionality and prevent operation of connected features, FordPass App, compatible w/select smartphone platforms, is available via a download, Message and data rates may apply
- Day-Night Auto-Dimming Rearview Mirror- Day-Night Rearview Mirror
- Driver And Passenger Visor Vanity Mirrors w/Driver And Passenger Auxiliary Mirror
- Driver And Passenger Visor Vanity Mirrors w/Driver And Passenger Illumination, Driver And Passenger Auxiliary Mirror
- Dual Zone Front Automatic Air Conditioning- FOB Controls -inc: Remote Engine Start
- Full Carpet Floor Covering -inc: Carpet Front And Rear Floor Mats
- Full Carpet Floor Covering -inc: Carpet Front Floor Mats
- Full Floor Console w/Locking Storage, Mini Overhead Console and 2 12V DC Power Outlets
- Full Floor Console w/Locking Storage, Mini Overhead Console w/Storage and 2 12V DC Power Outlets
- Full Floor Console w/Locking Storage, Mini Overhead Console w/Storage and 3 12V DC Power Outlets
- Full Vinyl/Rubber Floor Covering -inc: Carpet Front Floor Mats
- Gauges -inc: Speedometer, Odometer, Engine Coolant Temp, Tachometer, Inclinator, Trip Odometer and Trip Computer
- Gauges -inc: Speedometer, Odometer, Voltmeter, Engine Coolant Temp, Tachometer, Inclinator, Trip Odometer and Trip Computer
- Heated Cloth Bucket Seats -inc: 6-way manual driver and passenger including fore/aft, up/down and recline
- Interior Trim -inc: Metal-Look Door Panel Insert and Metal-Look Interior Accents
- Interior Trim -inc: Metal-Look Instrument Panel Insert, Metal-Look Door Panel Insert and Metal-Look Interior Accents
- Interior Trim -inc: Metal-Look Interior Accents - Leather/Metal-Look Gear Shifter Material
- Leather/Metal-Look Steering Wheel- Manual Air Conditioning
- Marine Grade Vinyl Bucket Seats -inc: 6-way manual driver and passenger including fore/aft, up/down and recline and front driver/passenger seat back MOLLE strap system
- Power 1st Row Windows w/Driver And Passenger 1-Touch Up/Down
- Power Door Locks w/Autolock Feature
- Power Rear Windows and Removable 3rd Row Windows
- Proximity Key For Doors And Push Button Start
- Proximity Key For Push Button Start Only
- Remote Keyless Entry w/Integrated Key Transmitter, Illuminated Entry, Illuminated Ignition Switch and Panic Button
- Seats w/Cloth Back Material- Smart Device Remote Engine Start
- Urethane Gear Shifter Material- Vinyl/Rubber Floor Trim- Air Filtration
- Cargo Space Lights- Compass- Cruise Control w/Steering Wheel Controls
- Dashboard Storage, Driver / Passenger And Rear Door Bins and 2nd Row Underseat Storage
- Delayed Accessory Power- Digital/Analog Appearance- Driver Foot Rest- Driver Seat
- Fade-To-Off Interior Lighting- Front Center Armrest- Front Cupholder- Front Map Lights
- HVAC -inc: Underseat Ducts- Immobilizer- Locking Glove Box
- Manual Adjustable Front Head Restraints and Foldable Rear Head Restraints
- Manual Tilt/Telescoping Steering Column- Outside Temp Gauge- Passenger Seat
- Perimeter Alarm- Rear Cupholder- Redundant Digital Speedometer- Systems Monitor
- Tracker System- Trip Computer

Mechanical

- 1195# Maximum Payload- 1364# Maximum Payload- 1444# Maximum Payload
- 1452# Maximum Payload- 3 Skid Plates- 3.73 Axle Ratio
- 4-Wheel Disc Brakes w/4-Wheel ABS, Front Vented Discs, Brake Assist, Hill Descent Control, Hill Hold Control and Electric Parking Brake
- 4-Wheel Disc Brakes w/4-Wheel ABS, Front Vented Discs, Brake Assist, Hill Hold Control and Electric Parking Brake
- 4.46 Axle Ratio- Driver Selectable Rear Locking Differential- GVWR: 5,920 lbs
- GVWR: 6,020 lbs- Transmission w/Driver Selectable Mode
- Transmission w/Driver Selectable Mode and Sequential Shift Control
- Transmission: 10-Speed Automatic w/o 99P-inc: trail control and trail turn assist w/99P-inc: trail control, trail turn assist and trail one-pedal driving
- Transmission: 7-Speed Manual -inc: granny gear and crank in gear function and Hill Descent Control

- Upfitter Switches
- 110-Amp/Hr 800CCA Maintenance-Free Battery w/Run Down Protection
- 20.8 Gal. Fuel Tank- 50 State Emissions System- Auto Locking Hubs
- Electric Power-Assist Steering- Electronic Transfer Case- Engine Auto Stop-Start Feature
- Engine: 2.3L EcoBoost I-4- Front Anti-Roll Bar- Gas-Pressurized Shock Absorbers
- Part And Full-Time Four-Wheel Drive
- Short And Long Arm Front Suspension w/Coil Springs- Single Stainless Steel Exhaust
- Solid Axle Rear Suspension w/Coil Springs- Towing Equipment -inc: Trailer Sway Control

Arizona Classic Car Sales

arizonaclassiccarsales.com

602-513-3298

2010 W. Parkside Ln. #118

Phoenix, AZ 85027

© 2024 AutoRevo - All rights reserved. - Powered by AutoRevo