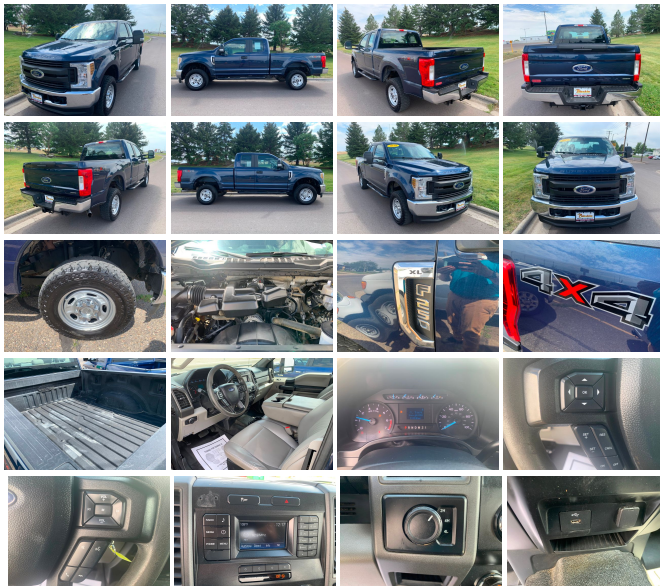


# 2019 Ford Super Duty F-250 Pickup XL

View this car on our website at [bleskinmotors.com/7120526/ebrochure](https://bleskinmotors.com/7120526/ebrochure)



Our Price **\$30,995**

## Specifications:

<b>Year:</b>	2019
<b>VIN:</b>	1FT7X2B68KEC60840
<b>Make:</b>	Ford
<b>Stock:</b>	22161
<b>Model/Trim:</b>	Super Duty F-250 Pickup XL
<b>Condition:</b>	Pre-Owned
<b>Body:</b>	Pickup Truck
<b>Exterior:</b>	Blue
<b>Engine:</b>	ENGINE: 6.2L 2-VALVE SOHC EFI NA V8 FLEX-FUEL
<b>Interior:</b>	-
<b>Mileage:</b>	111,247
<b>Drivetrain:</b>	4 Wheel Drive

Step into the world of robust capability and unyielding strength with the 2019 Ford Super Duty F-250 Pickup XL, a titan of the road that's dressed to impress in a striking blue exterior that captures the essence of both power and style. This isn't just a truck; it's a statement—a testament to Ford's commitment to excellence and a nod to the hardworking individual who demands nothing but the best.

At the heart of this Herculean machine lies the ENGINE: 6.2L 2-VALVE SOHC EFI NA V8 FLEX-FUEL, a marvel of engineering that delivers pulse-pounding performance and relentless torque. Whether you're towing heavy loads or cruising down the highway, this powertrain is designed to exceed expectations, providing both the brawn you need and the efficiency you crave. This isn't just power—it's power refined.

As you approach the Super Duty F-250, its bold blue hue captures the sunlight and exudes a sense of confidence and sophistication. This is a vehicle that looks just as good on a night out in the city as it does on a rugged job site. The muscular stance and authoritative lines of the F-250 speak volumes about its capabilities without uttering a single word.

Slide inside the cabin, and you'll be greeted by an interior that's all about functionality and comfort. The manufacturer options and packages have been meticulously selected to enhance your driving experience, ensuring that every journey is as enjoyable as it is productive. From the moment you grip the steering wheel, you'll feel in command of an unrivaled driving force.

But the F-250 XL isn't just about what's under the hood or its striking appearance—it's about the peace of mind that comes with driving a vehicle built to Ford's rigorous standards. The Super Duty lineup is renowned for its safety, durability, and reliability, and this particular model upholds that legacy with pride. You can drive with confidence,

knowing that you're behind the wheel of a truck that's as tough as it is technologically advanced.

Whether you're a contractor looking for a dependable workhorse or an adventurer seeking a vehicle that can keep up with your lifestyle, the 2019 Ford Super Duty F-250 Pickup XL is the perfect companion. It's a truck that can haul, tow, and traverse any terrain while providing a level of comfort and convenience that makes every trip a pleasure.

Don't miss the opportunity to own a piece of Ford's legendary Super Duty lineage. This 2019 F-250 XL is more than just a truck—it's a partner that's ready to take on the world with you. Be bold, be ambitious, and take the reins of this powerhouse today. Your blue chariot awaits, ready to turn heads and tackle any challenge that comes your way. Come see what it feels like to drive not just a vehicle, but a legacy. This is your chance to experience the pinnacle of performance and utility—don't let it slip away.

2019 Ford Super Duty F-250 Pickup XL

Bleskin Motor Company - 406-771-4691 - View this car on our website at [bleskinmotors.com/7120526/ebrochure](https://bleskinmotors.com/7120526/ebrochure)

#### Vehicle History Report : as Of 04/24/2024

**CARFAX**

Snapshot

#### 2019 FORD F-250 SUPER DUTY XL



No accidents or damage reported to CARFAX



12 Service history records



2 Previous owners



Types of owners: Corporate  
Personal



Last owned in Montana



111,379 Last reported odometer reading



**FREE CARFAX Report**

See the full CARFAX Report for additional information

\*carfax Snapshot is a reflection of available information on the date the report was pulled. carfax is constantly being updated with new information and is subject to change at any time.

#### Our Location :



2019 Ford Super Duty F-250 Pickup XL

Bleskin Motor Company - 406-771-4691 - View this car on our website at [bleskinmotors.com/7120526/ebrochure](https://bleskinmotors.com/7120526/ebrochure)

#### Installed Options

#### Option Packages

Interior

- Gauges -inc: Speedometer, Odometer, Oil Pressure, Engine Coolant Temp, Tachometer, Transmission Fluid Temp, Engine Hour Meter, Trip Odometer and Trip Computer
- HD Vinyl 40/20/40 Split Bench Seat -inc: center armrest, cupholder, storage and driver's side manual lumbar
- Passenger Visor Vanity Mirror- Securilock Anti-Theft Ignition (pats) Immobilizer
- Trip Computer- 2 12V DC Power Outlets
- 4-Way Driver Seat -inc: Manual Recline and Fore/Aft Movement
- 4-Way Passenger Seat -inc: Manual Recline and Fore/Aft Movement
- 60-40 Folding Split-Bench Front Facing Fold-Up Cushion Rear Seat - Air Filtration
- Analog Appearance- Day-Night Rearview Mirror
- Engine Compartment And Pickup Cargo Box Lights - Fade-To-Off Interior Lighting
- Fixed Rear Windows- Front Map Lights- Full Cloth Headliner
- Full Overhead Console w/Storage and 2 12V DC Power Outlets
- Full Vinyl/Rubber Floor Covering- HVAC -inc: Underseat Ducts
- Illuminated Locking Glove Box- Instrument Panel Covered Bin and Dashboard Storage
- Interior Trim -inc: Chrome Interior Accents - Manual 1st Row Windows
- Manual Adjustable Front Head Restraints and Manual Adjustable Rear Head Restraints
- Manual Air Conditioning- Manual Tilt/Telescoping Steering Column
- Outside Temp Gauge- Rear Cupholder- Systems Monitor
- Urethane Gear Shifter Material

Exterior

- Auto On/Off Aero-Composite Halogen Daytime Running Lights Preference Setting Headlamps w/Delay-Off
- Full-Size Spare Tire Stored Underbody w/Crankdown
- Tires: LT245/75Rx17E BSW A/S (4)
- Wheels: 17" Argent Painted Steel -inc: painted hub covers/center ornaments
- Aluminum Panels- Black Door Handles
- Black Front Bumper w/Black Rub Strip/Fascia Accent and 2 Tow Hooks - Black Grille
- Black Manual Side Mirrors w/Manual Folding- Black Rear Step Bumper
- Black Side Windows Trim and Black Front Windshield Trim
- Cargo Lamp w/High Mount Stop Light- Clearcoat Paint- Fixed Rear Window
- Front License Plate Bracket- Light Tinted Glass- Manual Extendable Trailer Style Mirrors
- Manual Tailgate/Rear Door Lock- Regular Box Style- Reverse Opening Rear Doors
- Steel Spare Wheel- Tailgate Rear Cargo Access- Variable Intermittent Wipers

Safety

- Gauges -inc: Speedometer, Odometer, Oil Pressure, Engine Coolant Temp, Tachometer, Transmission Fluid Temp, Engine Hour Meter, Trip Odometer and Trip Computer
- HD Vinyl 40/20/40 Split Bench Seat -inc: center armrest, cupholder, storage and driver's side manual lumbar
- Passenger Visor Vanity Mirror- Securilock Anti-Theft Ignition (pats) Immobilizer
- Trip Computer- 2 12V DC Power Outlets
- 4-Way Driver Seat -inc: Manual Recline and Fore/Aft Movement
- 4-Way Passenger Seat -inc: Manual Recline and Fore/Aft Movement
- 60-40 Folding Split-Bench Front Facing Fold-Up Cushion Rear Seat - Air Filtration
- Analog Appearance- Day-Night Rearview Mirror
- Engine Compartment And Pickup Cargo Box Lights - Fade-To-Off Interior Lighting
- Fixed Rear Windows- Front Map Lights- Full Cloth Headliner
- Full Overhead Console w/Storage and 2 12V DC Power Outlets
- Full Vinyl/Rubber Floor Covering- HVAC -inc: Underseat Ducts
- Illuminated Locking Glove Box- Instrument Panel Covered Bin and Dashboard Storage
- Interior Trim -inc: Chrome Interior Accents - Manual 1st Row Windows
- Manual Adjustable Front Head Restraints and Manual Adjustable Rear Head Restraints
- Manual Air Conditioning- Manual Tilt/Telescoping Steering Column
- Outside Temp Gauge- Rear Cupholder- Systems Monitor
- Urethane Gear Shifter Material

Mechanical

- Class V Towing Equipment -inc: Hitch and Trailer Sway Control
- Transmission: TorqShift-G 6-Spd Auto w/SelectShift- 157 Amp Alternator
- 3.73 Axle Ratio- 34 Gal. Fuel Tank- 3570# Maximum Payload
- 4-Wheel Disc Brakes w/4-Wheel ABS, Front And Rear Vented Discs, Brake Assist and Hill Hold Control
- 50-State Emissions System
- 72-Amp/Hr 650CCA Maintenance-Free Battery w/Run Down Protection
- Auto Locking Hubs- Electronic Transfer Case
- Engine: 6.2L 2-Valve SOHC EFI NA V8 Flex-Fuel -inc: Flex-Fuel badge on fleet orders only

Factory Installed Packages

ENGINE: 6.2L 2-VALVE SOHC EFI NA V8 FLEX-FUEL  
-inc: Flex-Fuel badge on fleet orders only

- Engine: 6.2L 2-Valve SBC EFI NA V8 Flex-Fuel -inc: Flex-Fuel badge on fleet orders only
  - Firm Suspension- Front Anti-Roll Bar- Front Suspension w/Coil Springs
  - GVWR: 10,000 lb Payload Package- HD Shock Absorbers
  - Hydraulic Power-Assist Steering- Part-Time Four-Wheel Drive
  - Single Stainless Steel Exhaust- Solid Axle Rear Suspension w/Leaf Springs
  - Trailer Wiring Harness- Transmission w/Oil Cooler
- 

---

Bleskin Motor Company

[bleskinmotors.com](https://bleskinmotors.com)

406-771-4691

4901 10th Avenue South

Great Falls, Montana 59405

© 2024 AutoRevo - All rights reserved. - Powered by [AutoRevo](#)