



## 2018 Nissan Altima 2.5 SV

View this car on our website at [cullmanautorebuilders.com/7120459/ebrochure](http://cullmanautorebuilders.com/7120459/ebrochure)



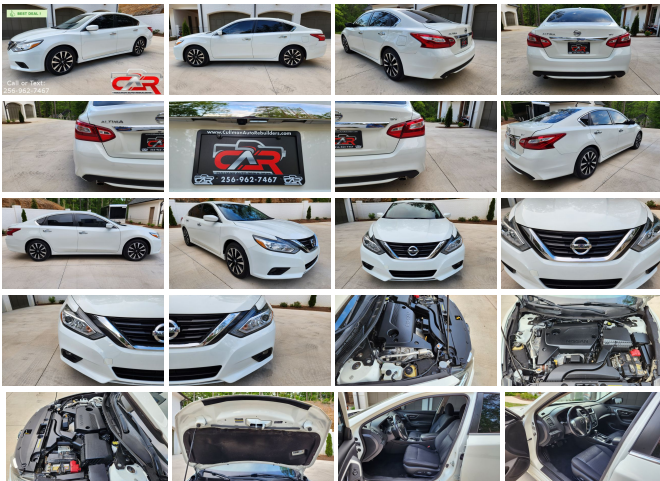
Our Price **\$14,500**

Retail Value **\$18,175**

### Specifications:

|                    |                                       |
|--------------------|---------------------------------------|
| <b>Year:</b>       | 2018                                  |
| <b>VIN:</b>        | 1N4AL3APXJC197712                     |
| <b>Make:</b>       | Nissan                                |
| <b>Model/Trim:</b> | Altima 2.5 SV                         |
| <b>Condition:</b>  | Pre-Owned                             |
| <b>Body:</b>       | Sedan                                 |
| <b>Exterior:</b>   | Glacier White                         |
| <b>Engine:</b>     | Engine: 2.5L DOHC 16-Valve 4-Cylinder |
| <b>Interior:</b>   | Charcoal Cloth                        |
| <b>Mileage:</b>    | 77,957                                |
| <b>Drivetrain:</b> | Front Wheel Drive                     |
| <b>Economy:</b>    | City 27 / Highway 38                  |

► 38 MPG! ► 78k MILES! ► NEW TIRES! ► SAVE ALMOST \$4,000 OFF RETAIL - PLEASE READ ON!



Don't let this one pass you by! Call, text, or message to setup an appointment to check out this 2018 Nissan Altima 2.5 SV! This vehicle has TONS of features that include Exterior Features: The SV trim level adds some exterior enhancements over the base model, including 17-inch alloy wheels, fog lights, chrome door handles, and a chrome grille. Interior Comfort: The Altima SV provides a comfortable cabin with features such as cloth upholstery, an eight-way power-adjustable driver's seat, and a leather-wrapped steering wheel. Infotainment System: It comes with a 5-inch color display infotainment system that includes Bluetooth connectivity, a USB port, and a six-speaker audio system. It also supports Apple CarPlay and Android Auto integration. Advanced Safety Features: The 2018 Altima SV includes several safety features, such as a rearview camera, blind-spot monitoring, rear cross-traffic alert, and forward collision warning with automatic emergency braking. Dual-Zone Climate Control: The SV trim offers dual-zone automatic climate control, allowing the driver and front passenger to set and maintain separate temperature preferences. Push-Button Start: With the keyless entry and push-button start feature, you can start the vehicle's engine without physically inserting the key. Intelligent Key: The Altima SV comes with an intelligent key system that allows for keyless entry and trunk access. It also includes a remote engine start feature.

It's a TON of car for the money compared to others out there! This Altima runs out and drives great with its 2.5L 4 cylinder engine that has plenty of get up and go and the automatic transmission that shifts like it should. The black cloth interior is in superb condition with no signs of wear and the Glacier White exterior of the car is in very good condition as well and appears to have been garage kept. The air blows super cold

and heat is hot! It's passed through our service department where it checked out great. There are NO check engine or warning lights on in the dash. This thing rides like a dream and sips gas! IT HAS A BRAND NEW SET OF TIRES WITH NEW TPMS SENSORS THAT HAVE BEEN CALIBRATED. This would make a great car for anyone – whether you're buying it for a first time driver or using it yourself as a daily commuter to work. We've sold many Altima's over the years and everyone has been extremely happy with them! This is one of the nicest we've had yet! Without a doubt this is the cleanest, best priced 2018 Nissan Altima 2.5 SV on the market for the year and miles! You won't find a nicer, lower mileage one for this price I promise! DON'T MISS IT!! SAVE THOUSANDS OFF RETAIL! See our site for over 60 detailed pics! Buy with confidence: Check out our ALL 5 STAR Google and Facebook reviews and see how happy customers are with the QUALITY and PRICES of our vehicles! We've been doing this since 2001. Like our Facebook page "Cullman Auto Rebuilders" to keep up with the great deals as they're posted! We are HONEST about what we sell! **If you need financing and live in Alabama – apply online with Alabama Credit Union.**

---

REASON FOR ALABAMA REBUILT TITLE (REBUILT MEANS ROAD READY/ROAD WORTHY) CAN BE TITLED / REGISTERED / INSURED WITH EASE IN ALL STATES AND IN CANADA // This 2018 Nissan Altima 2.5 SV will come with a REBUILT state of Alabama title due to a (PREVIOUS) incident from a vehicle lightly tapping it in the rear — even CARFAX shows it as a MINOR INCIDENT — See the BEFORE pics on our site! / IT IS FULLY FIXED NOW AND READY FOR THE ROAD — WE REPLACED THE REAR TRUNK LID, REAR BUMPER & REAR BUMPER SUPPORT, AND LEFT TAIL LIGHT WITH A NEW ONE - AN EASY FIX. Since then it has passed the Alabama inspection process and issued the Rebuilt Title as mentioned above — We've seen similar CLEAR title vehicles (2018 Nissan Altima 2.5 SV) in the marketplace retail for as high as \$18,175 (current Black Book market value) easily similarly equipped with like mileage but you can own this one for THOUSANDS less!

---

2018 Nissan Altima 2.5 SV

Cullman Auto Rebuilders - 256-962-7467 - View this car on our website at [cullmanautorebuilders.com/7120459/ebrochure](http://cullmanautorebuilders.com/7120459/ebrochure)

## Our Location :



2018 Nissan Altima 2.5 SV

Cullman Auto Rebuilders - 256-962-7467 - View this car on our website at [cullmanautorebuilders.com/7120459/ebrochure](http://cullmanautorebuilders.com/7120459/ebrochure)

## Installed Options

### Interior

- 2 12V DC Power Outlets- 2 Seatback Storage Pockets
- 60-40 Folding Bench Front Facing Fold Forward Seatback Rear Seat - Air Filtration
- Analog Appearance- Cargo Area Concealed Storage- Cargo Space Lights
- Carpet Floor Trim and Carpet Trunk Lid/Rear Cargo Door Trim - Cloth Seat Trim
- Cruise Control w/Steering Wheel Controls- Day-Night Rearview Mirror
- Delayed Accessory Power
- Driver / Passenger And Rear Door Bins and Audio Media Storage
- Driver And Passenger Visor Vanity Mirrors- Driver Foot Rest- Driver Seat
- Dual Zone Front Automatic Air Conditioning
- FOB Controls -inc: Cargo Access and Remote Engine Start - Fade-To-Off Interior Lighting
- Front And Rear Map Lights
- Front Bucket Seats -inc: 8-way power driver's seat w/2-way driver power lumbar support and 4-way manual passenger seat
- Front Center Armrest w/Storage and Rear Center Armrest- Front Cupholder
- Full Carpet Floor Covering- Full Cloth Headliner
- Full Floor Console w/Covered Storage, Mini Overhead Console w/Storage and 2 12V DC Power Outlets
- Gauges -inc: Speedometer, Odometer, Engine Coolant Temp, Tachometer, Trip Odometer and Trip Computer
- HVAC -inc: Underseat Ducts- Illuminated Locking Glove Box- Immobilizer
- Interior Trim -inc: Metal-Look/Piano Black Instrument Panel Insert, Metal-Look Door Panel Insert and Chrome/Metal-Look Interior Accents
- Leather Gear Shifter Material- Leather/Metal-Look Steering Wheel
- Manual Adjustable Front Head Restraints and Fixed Rear Head Restraints
- Manual Tilt/Telescoping Steering Column- Outside Temp Gauge- Passenger Seat
- Perimeter Alarm- Power 1st Row Windows w/Driver 1-Touch Up/Down
- Power Door Locks w/Autolock Feature- Power Rear Windows
- Proximity Key For Doors And Push Button Start - Rear Cupholder
- Remote Keyless Entry w/Integrated Key Transmitter, Illuminated Entry, Illuminated Ignition Switch and Push Button

Switch and Panic Button

- Remote Releases -Inc: Power Cargo Access and Mechanical Fuel
- Seats w/Cloth Back Material- Systems Monitor- Trip Computer- Valet Function
- Vinyl Door Trim Insert

---

## Exterior

- Auto On/Off Projector Beam Halogen Daytime Running Headlamps w/Delay-Off
- Black Grille w/Chrome Accents- Body-Colored Front Bumper
- Body-Colored Power Side Mirrors- Body-Colored Rear Bumper- Chrome Door Handles
- Chrome Side Windows Trim and Black Front Windshield Trim - Clearcoat Paint
- Compact Spare Tire Mounted Inside Under Cargo- Fixed Rear Window w/Defroster
- Front Fog Lamps- Front Windshield -inc: Sun Visor Strip
- Galvanized Steel/Aluminum Panels- Light Tinted Glass- Steel Spare Wheel
- Tires: P215/55VR17 AS- Trunk Rear Cargo Access- Variable Intermittent Wipers
- Wheels: 17" x 7.5" Machined Aluminum Alloy

---

## Safety

- 2 12V DC Power Outlets- 2 Seatback Storage Pockets
- 60-40 Folding Bench Front Facing Fold Forward Seatback Rear Seat - Air Filtration
- Analog Appearance- Cargo Area Concealed Storage- Cargo Space Lights
- Carpet Floor Trim and Carpet Trunk Lid/Rear Cargo Door Trim - Cloth Seat Trim
- Cruise Control w/Steering Wheel Controls- Day-Night Rearview Mirror
- Delayed Accessory Power
- Driver / Passenger And Rear Door Bins and Audio Media Storage
- Driver And Passenger Visor Vanity Mirrors- Driver Foot Rest- Driver Seat
- Dual Zone Front Automatic Air Conditioning
- FOB Controls -inc: Cargo Access and Remote Engine Start- Fade-To-Off Interior Lighting
- Front And Rear Map Lights
- Front Bucket Seats -inc: 8-way power driver's seat w/2-way driver power lumbar support and 4-way manual passenger seat
- Front Center Armrest w/Storage and Rear Center Armrest- Front Cupholder
- Full Carpet Floor Covering- Full Cloth Headliner
- Full Floor Console w/Covered Storage, Mini Overhead Console w/Storage and 2 12V DC Power Outlets
- Gauges -inc: Speedometer, Odometer, Engine Coolant Temp, Tachometer, Trip Odometer and Trip Computer
- HVAC -inc: Underseat Ducts- Illuminated Locking Glove Box- Immobilizer
- Interior Trim -inc: Metal-Look/Piano Black Instrument Panel Insert, Metal-Look Door Panel Insert and Chrome/Metal-Look Interior Accents
- Leather Gear Shifter Material- Leather/Metal-Look Steering Wheel
- Manual Adjustable Front Head Restraints and Fixed Rear Head Restraints
- Manual Tilt/Telescoping Steering Column- Outside Temp Gauge- Passenger Seat
- Perimeter Alarm- Power 1st Row Windows w/Driver 1-Touch Up/Down
- Power Door Locks w/Autolock Feature- Power Rear Windows
- Proximity Key For Doors And Push Button Start - Rear Cupholder
- Remote Keyless Entry w/Integrated Key Transmitter, Illuminated Entry, Illuminated Ignition Switch and Panic Button
- Remote Releases -Inc: Power Cargo Access and Mechanical Fuel
- Seats w/Cloth Back Material- Systems Monitor- Trip Computer- Valet Function
- Vinyl Door Trim Insert

---

## Mechanical

- 110 Amp Alternator- 18 Gal. Fuel Tank
- 4-Wheel Disc Brakes w/4-Wheel ABS, Front Vented Discs, Brake Assist and Hill Hold Control
- 4.83 Axle Ratio- 550CCA Maintenance-Free Battery w/Run Down Protection
- Electro-Hydraulic Power Assist Speed-Sensing Steering- Engine Oil Cooler
- Engine: 2.5L DOHC 16-Valve 4-Cylinder- Front And Rear Anti-Roll Bars
- Front-Wheel Drive- Gas-Pressurized Shock Absorbers
- Multi-Link Rear Suspension w/Coil Springs
- Quasi-Dual Stainless Steel Exhaust w/Chrome Tailpipe Finisher
- Strut Front Suspension w/Coil Springs- Transmission w/Driver Selectable Mode
- Transmission: Xtronic CVT (Continuously Variable)

---

## Option Packages

### Factory Installed Packages

- \_\_\_\_\_  
OPTIONAL EQUIPMENT

STANDARD PAINT GLACIER WHITE

CHARCOAL, CLOTH SEAT TRIM

Disclaimer: We pride ourselves on carrying quality used vehicles and recommend that all potential buyers conduct an inspection themselves or through a third party inspector. We strive to describe vehicle condition, featured options, and photos to the best of our abilities. As with any used vehicle, minor signs of wear may be more noticeable upon closer inspection, such as small chips and nicks, light scratches, wheel scuffs, and other signs of normal wear and tear. It is the customer's sole responsibility to verify the existence and condition of any vehicle, featured equipment options, and pricing. All vehicles are sold with Alabama Rebuilt Title unless otherwise stated in listing.



[cullmanautorebuilders.com](http://cullmanautorebuilders.com)

256-962-7467

1712 Tally Ho Street  
Cullman, AL 35055

© 2023 AutoRevo - All rights reserved. - Powered by AutoRevo