



2010 GMC Acadia SLE

Our Price \$5,995

View this vehicle on our website at no1autosales.com



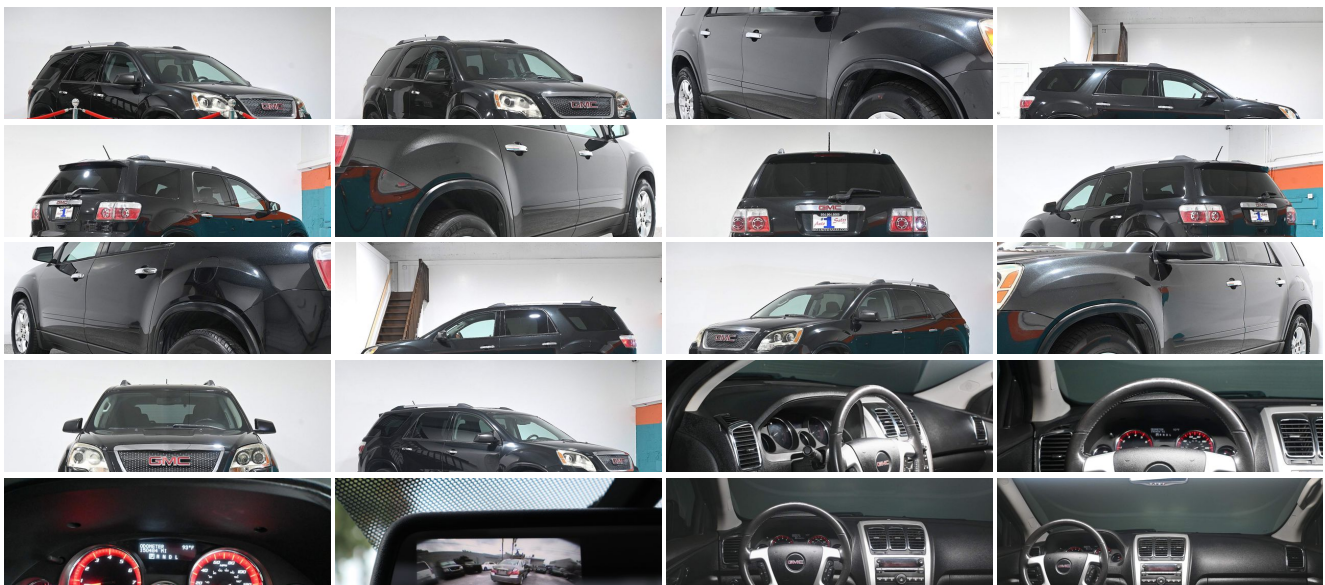
954-964-8669

5819 C Rodman Street , Hollywood, Florida 33023

Photos

Details

Contact



Specifications:

Year:	2010
VIN:	1GKLRLED6AJ248110
Make:	GMC
Model/Trim:	Acadia SLE
Condition:	Pre-Owned
Body:	SUV
Exterior:	Carbon Black Metallic
Engine:	ENGINE, 3.6L SIDI V6
Interior:	Black Cloth
Transmission:	TRANSMISSION, 6-SPEED AUTOMATIC, ELECTRONICALLY CONTROLLED
Mileage:	150,484
Drivetrain:	Front Wheel Drive
Economy:	City 17 / Highway 24

Vehicle Description

*** WARRANTY! CARFAX GUARANTEED! 3RD ROW SEAT! SERVICE RECORDS! COLD AC! TRADES WELCOME! *** The 2010 GMC Acadia SLE delivers excellent performance with style and dependability. This example is extremely clean inside and out and very well maintained by it's previous owner. Equipped with a 3.6L V6 engine, Active Eco, Reverse Camera, Remote Entry, Remote Start, Bluetooth, Power Seat, Factory Sound System, Power Windows/Locks/Mirrors, Cruise Control, Climate Control, Rear AC, Roof Rack, Traction Control and 18 inch Alloys. Only \$5,995 Cash! Financing available. * View more photos at www.no1autosales.com *

We here at #1 Auto Sales strive to make this your most enjoyable automotive purchasing experience with our hand selected inventory consisting of the highest quality, clean title vehicles! The overwhelming majority of our inventory has a vehicle warranty with additional coverages available to customize to your liking. For those who prefer a more personal touch and wish to avoid dealing with banks or third party lenders and their generic approvals, we offer our own custom-tailored "Buy Here-Pay Here" program that is structured around the needs and desires of each individual customer!

As always, comfort and satisfaction with your purchase is our primary focus. We welcome and encourage any inspection of our vehicles prior to purchase and are more than happy to have the vehicle delivered to the local service center of your choice. With our extensive photo library and videos we strive to make our listings the closest alternative to you experiencing the vehicle in person. We are more than happy to provide custom photos and videos as well as conduct live video chats for a personalized walk around or test drive! As these are used vehicles and we do not claim to be refinishing specialists, we ask that any questions about if there has been prior paintwork be directed towards your third-party inspector.

If there is ever anything we can do to enhance your experience please feel free to contact any of our sales representatives, available six days a week, at 954-964-8669 or visit us at www.no1autosales.com to schedule an appointment today! Please note that all options and trim packages are decoded by a third-party provider based on the VIN. We ask that you verify the availability and functionality prior to purchase.

Installed Options

Interior

- Air conditioning, rear manual
- Air conditioning, single-zone manual front climate control (Will be substituted with (CJ2) automatic tri-zone climate control when (U42) rear seat entertainment system is ordered.)
- Console, front center with 2 cup holders and storage
- Console, overhead with map lights
- Cruise control, electronic with set and resume speed
- Cup holders, 2 front on the floor console - Cup holders, 2 in the second row
- Defogger, rear-window electric- Door locks, power programmable with lockout protection
- Floor covering, color-keyed carpeting
- Floor mats, carpeted front, second and third row, removable- Horn, dual-note
- Instrumentation, 5-gauge with outside temperature indicator
- Insulation, acoustical package
- Lighting, interior with theater dimming, cargo compartment, reading lights for front seats, second row reading lamps integrated into dome light, door-and tailgate-activated switches and illuminated entry and exit feature
- Mirror, inside rearview auto-dimming- Rear Parking Assist, Ultrasonic
- Rearview camera system, integrated into rearview mirror- Reclining front buckets
- Remote Keyless Entry, programmable with 2 transmitters, panic button and extended range, no remote start provisions
- Remote vehicle start

Option Packages

Factory Installed Packages

ENGINE, 3.6L SIDI V6

(288 hp [214.7 kW] @ 6300 rpm, 270 lb-ft of torque [364.5 N-m] @ 3400 rpm)

TRANSMISSION, 6-SPEED AUTOMATIC, ELECTRONICALLY CONTROLLED

with overdrive

AIR CONDITIONING, TRI-ZONE AUTOMATIC CLIMATE CONTROL

with individual climate settings for driver and right-front passenger and second/third row controls for second and third row passengers

LICENSE PLATE BRACKET, FRONT

\$15

CARBON BLACK METALLIC

- Seat, 2-way power front passenger with manual recline and lumbar control
- Seat, 8-way power driver with power recline and lumbar control
- Seating, 7-passenger (2-2-3 seating configuration) (Includes 2nd row flat-folding Captains Chair. May be substituted with (ABC) 8-passenger seating.)
- Steering column, tilt and telescopic with brake/transmission shift interlock
- Steering wheel, leather-wrapped with (UK3) steering wheel mounted audio controls
- Storage system, rear cargo area under floor
- Theft-deterrent system, vehicle, PASS-Key III, engine immobilizer
- Trim, interior, chrome metallic instrument panel/console
- Visors, driver and front passenger, padded with cloth trim, color-keyed and illuminated vanity mirrors
- Windows, power with driver Express-Down

Exterior

- Body, power rear liftgate- Door handles, chrome (Black beltline molding.)
- Fog lamps, front round halogen
- Glass, Solar-Ray deep-tinted (all windows except light-tinted glass on windshield and driver and front passenger side glass)
- Headlamp control, automatic on and off - Headlamps, dual halogen projector lamp
- Luggage rack, side rails, roof-mounted
- Mirrors, outside power-adjustable, Black, manual-folding- Moldings, body-color bodyside
- Spoiler, rear- Tires, P255/65R18 all-season, blackwall
- Wheel, 17" (43.2 cm) compact steel spare
- Wheels, 4-18" x 7.5" (45.7 cm x 19.1 cm) painted aluminum
- Wiper, rear intermittent with washer- Wipers, front intermittent with washers

Safety

- Air conditioning, rear manual
- Air conditioning, single-zone manual front climate control (Will be substituted with (CJ2) automatic tri-zone climate control when (U42) rear seat entertainment system is ordered.)
- Console, front center with 2 cup holders and storage
- Console, overhead with map lights
- Cruise control, electronic with set and resume speed
- Cup holders, 2 front on the floor console - Cup holders, 2 in the second row
- Defogger, rear-window electric- Door locks, power programmable with lockout protection
- Floor covering, color-keyed carpeting
- Floor mats, carpeted front, second and third row, removable - Horn, dual-note
- Instrumentation, 5-gauge with outside temperature indicator
- Insulation, acoustical package
- Lighting, interior with theater dimming, cargo compartment, reading lights for front seats, second row reading lamps integrated into dome light, door-and tailgate-activated switches and illuminated entry and exit feature
- Mirror, inside rearview auto-dimming- Rear Parking Assist, Ultrasonic
- Rearview camera system, integrated into rearview mirror- Reclining front buckets
- Remote Keyless Entry, programmable with 2 transmitters, panic button and extended range, no remote start provisions
- Remote vehicle start
- Seat, 2-way power front passenger with manual recline and lumbar control
- Seat, 8-way power driver with power recline and lumbar control
- Seating, 7-passenger (2-2-3 seating configuration) (Includes 2nd row flat-folding Captains Chair. May be substituted with (ABC) 8-passenger seating.)
- Steering column, tilt and telescopic with brake/transmission shift interlock
- Steering wheel, leather-wrapped with (UK3) steering wheel mounted audio controls
- Storage system, rear cargo area under floor
- Theft-deterrent system, vehicle, PASS-Key III, engine immobilizer
- Trim, interior, chrome metallic instrument panel/console
- Visors, driver and front passenger, padded with cloth trim, color-keyed and illuminated vanity mirrors
- Windows, power with driver Express-Down

Mechanical

- Alternator, 170 amps- Axle, 3.16 ratio- Brakes, 4-wheel antilock, 4-wheel disc
- Engine, 3.6L SIDI V6 (288 hp [214.7 kW] @ 6300 rpm, 270 lb-ft of torque [364.5 N-m] @ 3400 rpm)
- Exhaust, double dual with chrome tips - Front wheel drive
- GVWR, 6411 lbs. (2908 kg) (TR14526 FWD models only.)
- Steering, power, constant effort- Suspension, Ride and Handling
- Transmission, 6-speed automatic, electronically controlled with overdrive (Included and only available with TR14526 FWD models.)

\$195

WHEELS, 4-19" X 7.5" (48.3 CM X 19.1 CM) MACHINED ALUMINUM

Includes (QCW) P255/55R20 H-rated tires.)

Option Packages Total

\$210

All advertised prices are for cash purchases and do not include additional costs such as dealer fee, sales tax or any applicable finance charges.

No 1 Auto Sales Inc

No 1 Auto Sales Inc

View this car on our website at no1autosales.com/7120124

Website: no1autosales.com

Phone: [954-964-8669](tel:954-964-8669)

Map: [5819 C Rodman Street, Hollywood, Florida 33023](#)

