

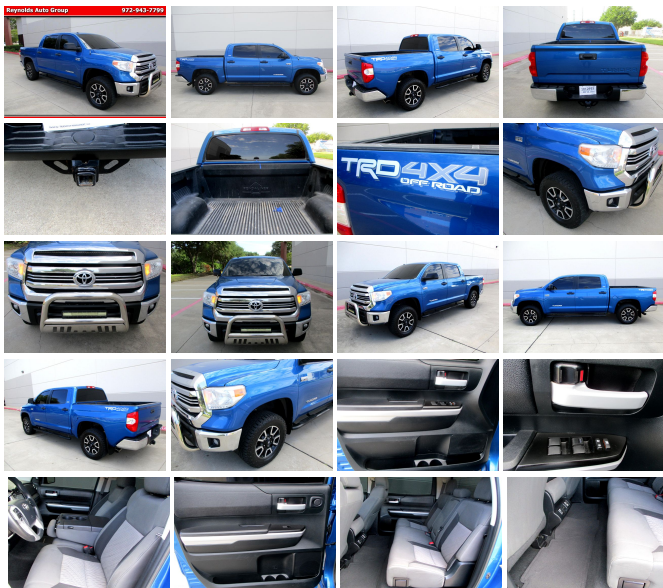
2017 Toyota Tundra TRD Pro

View this car on our website at reynoldsautotx.com/7119883/ebrochure

Reynolds Auto Group 972-943-7799



reynoldsautogrouptx.com



Our Price **\$35,323**

Specifications:

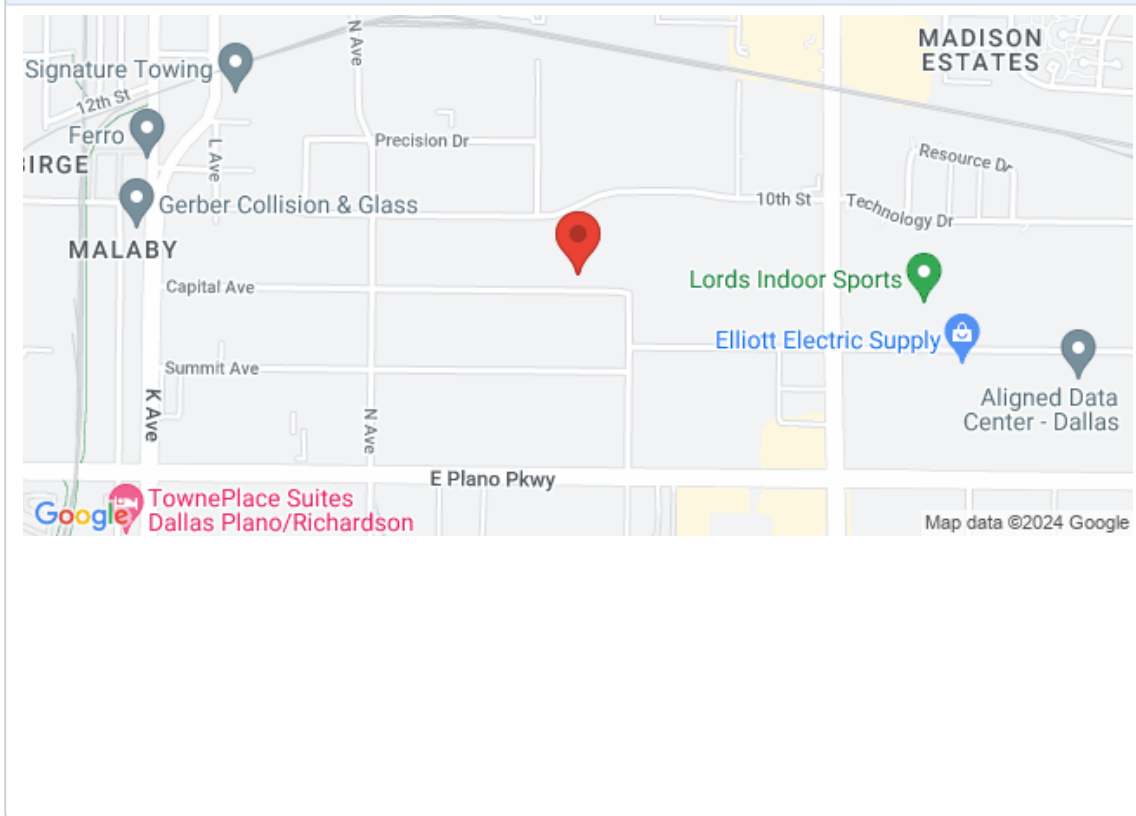
Year:	2017
VIN:	5TFDW5F18HX583854
Make:	Toyota
Stock:	853854
Model/Trim:	Tundra TRD Pro
Condition:	Pre-Owned
Body:	Pickup Truck
Exterior:	Blue
Engine:	Engine: 5.7L V8 DOHC 32V FFV w/i-Force -inc: acoustic control induction System (ACIS), dual independent variable valve timing w/intelligence and 4-2-1 tubular stainless steel exhaust manifold
Interior:	Gray Leather
Mileage:	97,275
Drivetrain:	4 Wheel Drive
Economy:	City 13 / Highway 17

Yes, folks it's a ONE OWNER, NO ACCIDENTS, TEXAS born and raised. We were lucky enough to get this truck from a Ford dealer just after it was traded in. So, it's been through their service department and checked from head to toe just before we bought it. This truck has a lot of eye appeal, and it runs and drives like it looks. You can tell by the appearance that the previous owner took pride in ownership of his truck by the overall condition of it. I will say that the paint shines like a new one and the cloth interior is as clean as they come. Also, along with this truck comes a custom set of seat covers that are simulated leather and they are blue (to match the truck) and black. We removed them so you could see the actual seats themselves. They are pretty bad a-- covers and expensive. Outside you will find a couple of door dings that are very small but outside of that it is pretty much dent and ding free. The cloth interior is in very good condition as you can probably tell from the pictures. Carpeting looks like new as well. Now when you get behind the wheel and drive this truck you will find that it runs smooth just like you would expect it to. The a/c is ice cold and all of the factory installed equipment works like it was designed to. If you didn't notice it has a trailer tow package with encompasses heavy duty radiator, transmission oil cooler and heavy-duty battery. To make a long story short if you like what you see and would want to come in and give it a once over then all that is necessary is give Rocky Reynolds a call or text to 214-542-7794 and he will be happy to set one up for you. We do offer Bank financing, except trades and offer extended warranty's if you're interested. We are a family owned and operated business in Texas since 1959. Come see us and you will see why we have been able to stay in business for so long. Look forward to hearing from you soon.

2017 Toyota Tundra TRD Pro

Reynolds Auto Group - 972-943-7799 - View this car on our website at reynoldsautotx.com/7119883/ebrochure

Our Location :



2017 Toyota Tundra TRD Pro

Reynolds Auto Group - 972-943-7799 - View this car on our website at reynoldsautotx.com/7119883/ebrochure

Installed Options

Interior

- Gauges -inc: Speedometer, Odometer, Voltmeter, Oil Pressure, Engine Coolant Temp, Tachometer, Trip Odometer and Trip Computer
- Power Rear Windows
- Remote Keyless Entry w/4 Door Curb/Courtesy, Illuminated Entry and Panic Button
- Leather Seat Trim (LF)
- Full Carpet Floor Covering -inc: Carpet Front And Rear Floor Mats
- Smart Device Integration- Power 1st Row Windows w/Driver 1-Touch Down
- Power Door Locks w/Autolock Feature- Trip Computer
- Front Bucket Seats -inc: red contrast stitching, TRD Pro logo, 10-way power-adjustable driver's seat and 4-way manual adjustable passenger seat
- Driver Seat- Passenger Seat
- 60-40 Folding Split-Bench Front Facing Fold-Up Cushion Leather Rear Seat w/Manual Fore/Aft
- Manual Tilt/Telescoping Steering Column- Front Cupholder- Rear Cupholder
- Cruise Control w/Steering Wheel Controls- Manual Air Conditioning
- HVAC -inc: Underseat Ducts- Illuminated Locking Glove Box- Driver Foot Rest
- Full Cloth Headliner
- Interior Trim -inc: Metal-Look Instrument Panel Insert, Metal-Look Door Panel Insert and Metal-Look Interior Accents
- Leather/Aluminum Gear Shifter Material- Day-Night Rearview Mirror
- Driver And Passenger Visor Vanity Mirrors- Auto-Dimming Rearview Mirror
- Full Overhead Console w/Storage and 3 12V DC Power Outlets
- Delay Off Interior Lighting- Front And Rear Map Lights- Pickup Cargo Box Lights
- HomeLink Universal Transceiver
- Dashboard Storage, Driver / Passenger And Rear Door Bins and 1st Row Underseat Storage

- Delayed Accessory Power- Systems Monitor- Outside Temp Gauge- Analog Appearance
- Compass- 1 Seatback Storage Pocket- Seats w/Leatherette Back Material
- Manual Adjustable Front Head Restraints and Manual Adjustable Rear Head Restraints
- Rear Center Armrest- Anti-Theft Immobilizer w/Alarm- Air Filtration
- 3 12V DC Power Outlets

Exterior

- Manual Tailgate/Rear Door Lock- Wheels: 18" x 8J Split 5-Spoke TRD Black Alloy
- Tires: P275/65R18 Michelin AT- Regular Box Style- Steel Spare Wheel
- Full-Size Spare Tire Stored Underbody w/Crankdown- Clearcoat Paint
- Black Front Bumper w/Body-Colored Rub Strip/Fascia Accent and 2 Tow Hooks
- Black Rear Step Bumper w/Body-Colored Rub Strip/Fascia Accent
- Black Side Windows Trim, Black Front Windshield Trim and Black Rear Window Trim
- Black Door Handles- Color-Keyed Power Heated Exterior Mirrors
- Power Rear Window w/Defroster- Front Windshield -inc: Sun Visor Strip
- Deep Tinted Glass- Variable Intermittent Wipers w/Heated Wiper Park
- Fully Galvanized Steel Panels- Splash Guards- Black Grille w/Body-Color Surround
- Tailgate Rear Cargo Access
- Manual-Leveling Auto Off Aero-Composite Halogen Daytime Running Headlamps
- Cargo Lamp w/High Mount Stop Light- Front Fog Lamps
- Deck Rail System -inc: 4 adjustable tie-down cleats

Safety

- Gauges -inc: Speedometer, Odometer, Voltmeter, Oil Pressure, Engine Coolant Temp, Tachometer, Trip Odometer and Trip Computer
- Power Rear Windows
- Remote Keyless Entry w/4 Door Curb/Courtesy, Illuminated Entry and Panic Button
- Leather Seat Trim (LF)
- Full Carpet Floor Covering -inc: Carpet Front And Rear Floor Mats
- Smart Device Integration- Power 1st Row Windows w/Driver 1-Touch Down
- Power Door Locks w/Autolock Feature- Trip Computer
- Front Bucket Seats -inc: red contrast stitching, TRD Pro logo, 10-way power-adjustable driver's seat and 4-way manual adjustable passenger seat
- Driver Seat- Passenger Seat
- 60-40 Folding Split-Bench Front Facing Fold-Up Cushion Leather Rear Seat w/Manual Fore/Aft
- Manual Tilt/Telescoping Steering Column- Front Cupholder- Rear Cupholder
- Cruise Control w/Steering Wheel Controls- Manual Air Conditioning
- HVAC -inc: Underseat Ducts- Illuminated Locking Glove Box- Driver Foot Rest
- Full Cloth Headliner
- Interior Trim -inc: Metal-Look Instrument Panel Insert, Metal-Look Door Panel Insert and Metal-Look Interior Accents
- Leather/Aluminum Gear Shifter Material- Day-Night Rearview Mirror
- Driver And Passenger Visor Vanity Mirrors- Auto-Dimming Rearview Mirror
- Full Overhead Console w/Storage and 3 12V DC Power Outlets
- Delay Off Interior Lighting- Front And Rear Map Lights- Pickup Cargo Box Lights
- HomeLink Universal Transceiver
- Dashboard Storage, Driver / Passenger And Rear Door Bins and 1st Row Underseat Storage
- Delayed Accessory Power- Systems Monitor- Outside Temp Gauge- Analog Appearance
- Compass- 1 Seatback Storage Pocket- Seats w/Leatherette Back Material
- Manual Adjustable Front Head Restraints and Manual Adjustable Rear Head Restraints
- Rear Center Armrest- Anti-Theft Immobilizer w/Alarm- Air Filtration
- 3 12V DC Power Outlets

Mechanical

- Transmission: Electronic 6-Speed Automatic w/OD -inc: intelligence (ECT-i), sequential shift mode, uphill/downhill shift logic and TOW/HAUL mode
- Transmission w/Driver Selectable Mode, Sequential Shift Control and Oil Cooler
- Engine: 5.7L V8 DOHC 32V FFV w/i-Force -inc: acoustic control induction System (ACIS), dual independent variable valve timing w/intelligence and 4-2-1 tubular stainless steel exhaust manifold
- 4.30 Axle Ratio- GVWR: 7,200 lbs- Electronic Transfer Case
- Part-Time Four-Wheel Drive- Engine Oil Cooler- 710CCA Maintenance-Free Battery
- 170 Amp Alternator
- Class IV Towing Equipment -inc: Hitch, Brake Controller and Trailer Sway Control
- Trailer Wiring Harness- 2 Skid Plates- 1560# Maximum Payload- Front Anti-Roll Bar
- Bilstein Brand Name Shock Absorbers- Off-Road Suspension
- Hydraulic Power-Assist Speed-Sensing Steering
- Quasi-Dual Stainless Steel Exhaust w/Polished Tailpipe Finisher
- 38 Gallon Fuel Tank Capacity- Auto Locking Hubs

- Double Wishbone Front Suspension w/Coil Springs
- Solid Axle Rear Suspension w/Leaf Springs
- 4-Wheel Disc Brakes w/4-Wheel ABS, Front And Rear Vented Discs and Brake Assist
- Brake Actuated Limited Slip Differential

<h3> All advertised prices exclude government fees and taxes, any dealer document preparation charge, and any emission testing charge. The price for listed vehicles as equipped does not include charges such as: License, Title, Registration Fees, State or Local Taxes, Dealer Prep, Smog Fees, or Delivery Fees. DEALER makes no representations, expressed or implied, to any actual or prospective purchaser or owner of this vehicle as to the existence, ownership, accuracy, description or condition of the listed vehicle's equipment, accessories, price, specials or any warranties. Any and all differences must be addressed prior to the sale of this vehicle.</h3>

Reynolds Auto Group

reynoldsautotx.com

972-943-7799

1701 Capital Ave

Plano, Texas 75074

© 2024 AutoRevo - All rights reserved. - Powered by AutoRevo