

# 2022 Ford F-150 XL

View this car on our website at [askjorgelopez.com/7119064/ebrochure](http://askjorgelopez.com/7119064/ebrochure)

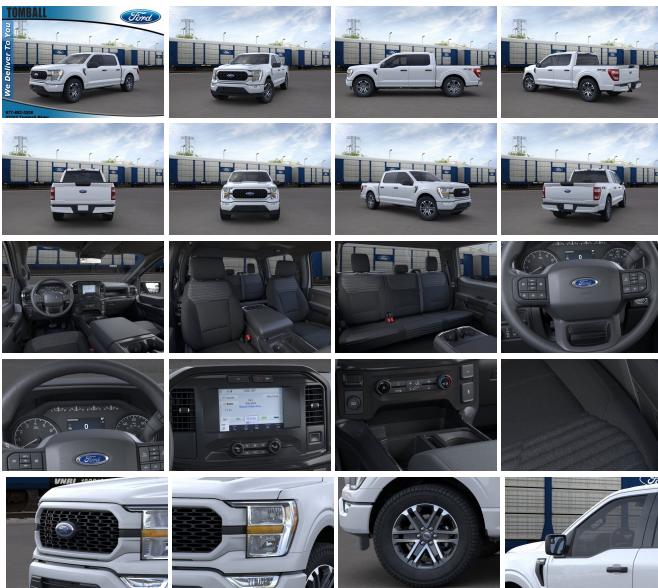


Our Price **\$47,040**

Retail Value ~~\$49,135~~

## Specifications:

<b>Year:</b>	2022
<b>VIN:</b>	1FTEW1C56NKE99965
<b>Make:</b>	Ford
<b>Stock:</b>	TKE99965
<b>Model/Trim:</b>	F-150 XL
<b>Condition:</b>	New
<b>Body:</b>	Pickup Truck
<b>Exterior:</b>	SPACE WHITE METALLIC
<b>Engine:</b>	ENGINE: 5.0L V8
<b>Interior:</b>	STX SPORT CLOTH 40/CON/40 BLACK
<b>Mileage:</b>	0
<b>Drivetrain:</b>	Rear Wheel Drive
<b>Economy:</b>	City 17 / Highway 24



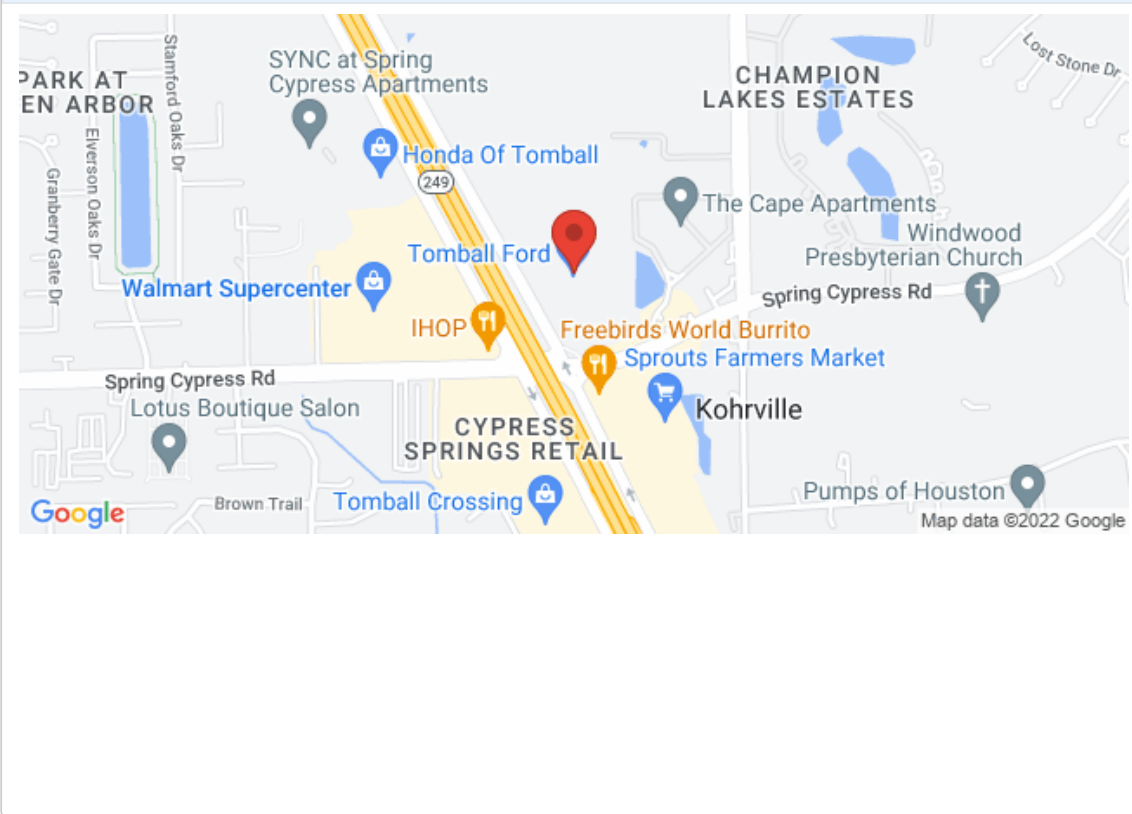
"Feel at ease with this reliable 2022 Ford F-150. Tire Specific Low Tire Pressure Warning, Side Impact Beams, Safety Canopy System Curtain 1st And 2nd Row Airbags, Rear Child Safety Locks, Outboard Front Lap And Shoulder Safety Belts -inc: Rear Center 3 Point, Height Adjusters and Pretensioners.\*Fully-Loaded with Additional Options\*STX APPEARANCE PACKAGE -inc: Box Side Decals, Molded-In Color Black Honeycomb Style Grille, body-color surround, SYNC 4 w/Enhanced Voice Recognition, 8" LCD capacitive touchscreen w/swipe capability, wireless phone connection, cloud connected, AppLink w/App catalog, 911 Assist, Apple CarPlay and Android Auto compatibility, digital owners manual, conversational voice command recognition and connected navigation, Note: Navigation services require SYNC 4 and FordPass Connect (optional on select vehicles), complimentary connect service and the FordPass app (see FordPass Terms for details), Eligible vehicles receive a complimentary 90-day trial of navigation services that begins on the new vehicle warranty start date, Customers must unlock the navigation service trial by activating the eligible vehicle w/a FordPass member account, If not subscribed by the end of the complimentary period, the navigation service will terminate, Connected service and features depend on compatible AT&T network, ENGINE: 5.0L V8 -inc: GVWR: 6,800 lbs Payload Package, 3.15 Axle Ratio, TIRES: 275/60R20 BSW A/S -inc: 245/70R17 all-season spare tire, STX APPEARANCE PACKAGE -inc: Box Side Decals, Molded-In Color Black Honeycomb Style Grille, body-color surround, SYNC 4 w/Enhanced Voice Recognition, 8" LCD capacitive touchscreen w/swipe capability, wireless phone connection, cloud connected, AppLink w/App catalog, 911 Assist, Apple CarPlay and Android Auto compatibility, digital owners manual, conversational voice command recognition and connected navigation, Note: Navigation services require SYNC 4 and FordPass Connect (optional on select

vehicles), complimentary connect service and the FordPass app (see FordPass Terms for details), Eligible vehicles receive a complimentary 90-day trial of navigation services that begins on the new vehicle warranty start date. Customers must unlock the navigation service trial by activating the eligible vehicle w/a FordPass member account, If not subscribed by the end of the complimentary period, the navigation service will terminate, Connected service and features depend on compatible AT&T network, SPACE WHITE METALLIC, FRONT LICENSE PLATE BRACKET -inc: Standard in states requiring 2 license plates, optional to all others, FOG LAMPS, EQUIPMENT GROUP 101A HIGH -inc: Reverse Sensing System, Cruise Control, ENGINE: 5.0L V8 -inc: GVWR: 6,800 lbs Payload Package, 3.15 Axle Ratio, COLOR-COORDINATED CARPET W/CARPETED FLOOR MATS.\* Visit Us Today \*Test drive this must-see, must-drive, must-own beauty today at Tomball Ford, 22702 Tomball Parkway, Tomball, TX 77375."

2022 Ford F-150 XL

Ask Jorge Lopez - (866) 773-1396 - View this car on our website at [askjorgelopez.com/7119064/ebrochure](https://askjorgelopez.com/7119064/ebrochure)

### Our Location :



2022 Ford F-150 XL

Ask Jorge Lopez - (866) 773-1396 - View this car on our website at [askjorgelopez.com/7119064/ebrochure](https://askjorgelopez.com/7119064/ebrochure)

## Installed Options

### Interior

- Cloth 40/20/40 Front Seat -inc: 2-way manual driver/passenger adjustment and armrest
- Driver Seat- Passenger Seat
- 60-40 Folding Split-Bench Front Facing Fold-Up Cushion Rear Seat
- Manual Tilt/Telescoping Steering Column
- Gauges -inc: Speedometer, Odometer, Voltmeter, Oil Pressure, Engine Coolant Temp, Tachometer, Transmission Fluid Temp, Trip Odometer and Trip Computer
- Power Rear Windows- FordPass Connect 4G Mobile Hotspot Internet Access
- Front Cupholder- Rear Cupholder- Compass
- Remote Keyless Entry w/Integrated Key Transmitter, Illuminated Entry and Panic Button

- Manual Air Conditioning- HVAC -inc: Underseat Ducts- Locking Glove Box
- Interior Trim -inc: Cabback Insulator and Metal-Look Interior Accents - Full Cloth Headliner
- Urethane Gear Shifter Material- Day-Night Rearview Mirror
- Passenger Visor Vanity Mirror
- Mini Overhead Console w/Storage and 1 12V DC Power Outlet - Front Map Lights
- Fade-To-Off Interior Lighting- Full Vinyl/Rubber Floor Covering- Pickup Cargo Box Lights
- Smart Device Remote Engine Start
- SYNC 4 -inc: 8" LCD capacitive touchscreen w/swipe capability, wireless phone connection, cloud connected, AppLink w/App catalog, 911 Assist, Apple CarPlay and Android Auto compatibility and digital owners manual
- Instrument Panel Bin, Dashboard Storage, Interior Concealed Storage, Driver / Passenger And Rear Door Bins
- Power 1st Row Windows w/Driver And Passenger 1-Touch Up/Down
- Delayed Accessory Power- Power Door Locks w/Autolock Feature- Trip Computer
- Outside Temp Gauge- Analog Appearance
- Lane-Keeping System -inc: lane-keeping alert, lane-keeping aid and driver alert
- Pre-Collision Assist w/Automatic Emergency Braking -inc: pedestrian detection, forward collision warning and dynamic brake support
- Rear View Camera- Seats w/Cloth Back Material
- Manual Adjustable Front Head Restraints and Manual Adjustable Rear Head Restraints
- Securilock Anti-Theft Ignition (pats) Immobilizer- Perimeter Alarm
- 1 12V DC Power Outlet- Air Filtration

---

## Exterior

- Wheels: 17" Silver Steel- Tires: 245/70R17 BSW A/S- Regular Box Style
- Steel Spare Wheel- Full-Size Spare Tire Stored Underbody w/Crankdown
- Clearcoat Paint- Black Front Bumper w/Body-Colored Rub Strip/Fascia Accent
- Black Rear Step Bumper- Black Side Windows Trim- Black Door Handles
- Black Power Side Mirrors w/Manual Folding- Fixed Rear Window- Light Tinted Glass
- Variable Intermittent Wipers- Aluminum Panels- Black Grille
- Tailgate Rear Cargo Access- Tailgate/Rear Door Lock Included w/Power Door Locks
- Ford Co-Pilot360 - Autolamp Auto On/Off Aero-Composite Halogen Daytime Running Lights Preference Setting Headlamps w/Delay-Off
- Cargo Lamp w/High Mount Stop Light- Perimeter/Approach Lights- Auto High Beam

---

## Safety

- Cloth 40/20/40 Front Seat -inc: 2-way manual driver/passenger adjustment and armrest
- Driver Seat- Passenger Seat
- 60-40 Folding Split-Bench Front Facing Fold-Up Cushion Rear Seat
- Manual Tilt/Telescoping Steering Column
- Gauges -inc: Speedometer, Odometer, Voltmeter, Oil Pressure, Engine Coolant Temp, Tachometer, Transmission Fluid Temp, Trip Odometer and Trip Computer
- Power Rear Windows- FordPass Connect 4G Mobile Hotspot Internet Access
- Front Cupholder- Rear Cupholder- Compass
- Remote Keyless Entry w/Integrated Key Transmitter, Illuminated Entry and Panic Button
- Manual Air Conditioning- HVAC -inc: Underseat Ducts- Locking Glove Box
- Interior Trim -inc: Cabback Insulator and Metal-Look Interior Accents - Full Cloth Headliner
- Urethane Gear Shifter Material- Day-Night Rearview Mirror
- Passenger Visor Vanity Mirror
- Mini Overhead Console w/Storage and 1 12V DC Power Outlet - Front Map Lights
- Fade-To-Off Interior Lighting- Full Vinyl/Rubber Floor Covering- Pickup Cargo Box Lights
- Smart Device Remote Engine Start
- SYNC 4 -inc: 8" LCD capacitive touchscreen w/swipe capability, wireless phone connection, cloud connected, AppLink w/App catalog, 911 Assist, Apple CarPlay and Android Auto compatibility and digital owners manual
- Instrument Panel Bin, Dashboard Storage, Interior Concealed Storage, Driver / Passenger And Rear Door Bins
- Power 1st Row Windows w/Driver And Passenger 1-Touch Up/Down
- Delayed Accessory Power- Power Door Locks w/Autolock Feature- Trip Computer
- Outside Temp Gauge- Analog Appearance
- Lane-Keeping System -inc: lane-keeping alert, lane-keeping aid and driver alert
- Pre-Collision Assist w/Automatic Emergency Braking -inc: pedestrian detection, forward collision warning and dynamic brake support
- Rear View Camera- Seats w/Cloth Back Material
- Manual Adjustable Front Head Restraints and Manual Adjustable Rear Head Restraints
- Securilock Anti-Theft Ignition (pats) Immobilizer- Perimeter Alarm
- 1 12V DC Power Outlet- Air Filtration

---

## Mechanical

- Engine: 3.3L V6 PFDI -inc: auto start-stop technology and flex-fuel capability
- Transmission: Electronic 10-Speed Automatic -inc: selectable drive modes: normal, ECO, sport, tow/haul, slooperv and trail

Standard Equipment

- 3.55 Axle Ratio- GVWR: 6,250 lbs Payload Package- Rear-Wheel Drive
- 70-Amp/Hr 610CCA Maintenance-Free Battery w/Run Down Protection
- 200 Amp Alternator- Towing Equipment -inc: Trailer Sway Control- Trailer Wiring Harness
- 1785# Maximum Payload- HD Shock Absorbers- Front Anti-Roll Bar
- Electric Power-Assist Speed-Sensing Steering- Single Stainless Steel Exhaust
- 26 Gal. Fuel Tank- Double Wishbone Front Suspension w/Coil Springs
- Solid Axle Rear Suspension w/Leaf Springs
- 4-Wheel Disc Brakes w/4-Wheel ABS, Front And Rear Vented Discs, Brake Assist, Hill Hold Control and Electric Parking Brake

## Option Packages

### Factory Installed Packages

-  
ENGINE: 5.0L V8  
-inc: GVWR: 6,800 lbs Payload Package, 3.15 Axle Ratio      \$2,335

-  
Option Packages Total  
\$2,335

Ask Jorge Lopez

[askjorgelopez.com](http://askjorgelopez.com)

(866) 773-1396

22702 Tomball Parkway

Tomball, TX 77375

© 2022 AutoRevo - All rights reserved. - Powered by AutoRevo