



2003 Chevrolet Corvette Z06

Website Price \$24,995

View this vehicle on our website at autoparkdallas.com



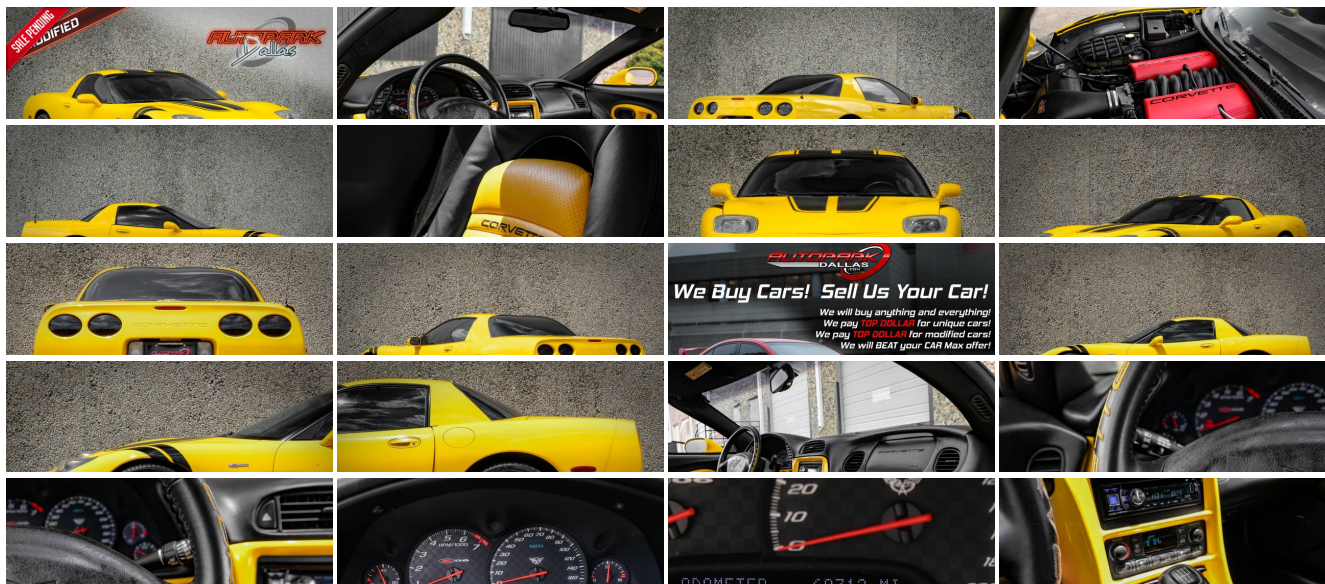
(214) 945-2601

2061 S Stemmons Fwy , Lewisville, TX 75067

Photos

Details

Contact



Specifications:

Year:	2003
VIN:	1G1YY12S335126353
Make:	Chevrolet
Stock:	1114
Model/Trim:	Corvette Z06
Condition:	Pre-Owned
Body:	Coupe
Exterior:	Millenium Yellow
Engine:	Engine, 5.7L LS6 V8 SFI
Interior:	Gold Leather
Mileage:	60,681
Drivetrain:	Rear Wheel Drive
Economy:	City 19 / Highway 28

Vehicle Description

AutoPark Dallas is thrilled to offer you this Beautiful Millenium Yellow Chevrolet Corvette Z06 for sale! The American-made 2-door coupe that strikes a fire in everyone's heart with a passion for speed, the desire to burn some rubber, and a competitive spirit! There is not a soul that does not know the Corvette, being a low-profile sports car with a signature look that is easily recognizable. These bald eagle-screaming beauties are a thrill to experience behind the wheel and always stand out in a crowded car meet or parking lot. Our Z06 here at APD is quite flashy with that beautiful yellow paint and custom yellow interior, which is an immediate eye-catcher for onlookers as your soaring on by! DO! NOT! HESITATE!!! To swing by and check out this Corvette parked in our indoor 16,000 Sq Ft Showroom located in Dallas , Texas amongst our inventory of 100+ other Performance / Modified and Luxury Vehicles!

2005 Chevrolet Corvette Z06

Custom Black Striping

Popup Headlight Delete

Chrome Lexani Wheels

Kicker Sub and Sound System

Alpine Head Unit

Tinted tail Lights

Custom Yellow Interior

STOCK!

* Clean CarFax !*

Millenium Yellow Exterior

Yellow Leather Interior With Custom Yellow Trim!

Dual Climate Controls

Daytime Running Lights

5.7L V8 SFI Engine

6-Speed manual transmission

Rear Wheel Drive
Professionally Detailed!
Well Maintained!
* Free CarFax Report !*
AND SO MUCH MORE!!!

Financing is available!

Check out our Payment Calculator to get an estimate on your monthly payments!

OR

Get pre-approved in no time by filling out a credit application on the 'Finance' section of our website!

We also offer MANY different Extended Warranty options!

Check out our Google Reviews by *Clicking* this LINK!

Referrals and Testimonials is what our business is built on!

The team here at AutoPark Dallas, is dedicated to offering a level of customer service not usually found in the automobile industry. Thanks to years of extensive car buying / selling experience, we pursue quality used and new vehicles that are hand-picked from factory sources. Our love for automobiles and dislike of traditional dealership tactics is what motivates us to provide the service we do! The pride we take in continuing this service long after the vehicle has been delivered is what we strive for! Looking forward to making every effort to see that our customer is completely satisfied and a friend for life!

Pre-purchase inspections are always welcomed!

We also offer airport pick-up, competitive financing options, free CARFAX Reports, Car Shipping nationwide, Extended Warranty plans, and so much more!

Trade-In(s) are always accepted or sell us your used car (MODIFIED OR NOT)! Please call or text for more information about Trade-Ins or selling your car to us @ (214) 945-2601!

#(214) 945-2601

Call or Text *Anytime!*

Se habla Español

WE BUY CARS!

WWW.AUTOPARKDALLAS.COM

Installed Options

Interior

- Seat adjuster, power, driver 6-way

Seats, front leather coating surface bucket, 705 specific inn dual density seatback, back

Option Packages

Factory Installed Packages

Engine - 5.7L HEMI 350

- Seats, front leather seating surfaces bucket, Z06-specific-inc: dual density seatback, back angle adjustment & 6-way power driver seat
- Sound system, ETR AM/FM stereo w/CD player-inc: seek-&-scan, digital clock, auto-tone control, speed-compensated volume & TheftLock
- Air conditioning, dual-zone, automatic-inc: individual climate settings for driver & right front passenger, automatic climate control & outside temperature display
- Antenna, fixed-mast
- Console, floor, lockable-inc: integral cupholder, ashtray, coin holder, auxiliary power outlet & cassette/CD storage
- Cruise control, electronic w/set & resume speed-inc: telltale in instrument panel cluster
- Defogger, rear-window, electric-inc: front & side window outlets, driver & front passenger
- Floor mats, carpeted
- Head-Up Display-inc: digital readouts for vehicle speed, engine rpm, a performance up-shift guide for the 6-speed manual transmission, & readings from key gauges including water temperature, oil pressure & fuel
- Instrumentation, analog, electronic-inc: Driver Information Center
- Keyless entry, remote-inc: panic button & trunk/hatch release
- Lighting, interior, courtesy, cargo console & glovebox
- Mirror, inside rearview, manual day/night-inc: dual reading lights
- Sound system feature, Bose speaker & amplifier system
- Steering column, Tilt-Wheel-inc: (NK4) Steering wheel, leather-wrapped rim
- Storage-inc: lockable glovebox, center console & 3 rear compartments
- Theft-deterrent alarm system- Theft-deterrent system, PASS-Key II
- Tire sealant & inflator kit- Trunk, rear-inc: remote release
- Visors, illuminated vanity mirrors, driver & front passenger
- Windows, power-inc: driver & passenger express-down

Exterior

- Daytime running lamps- Fascia, front grille inserts
- Frame, uniframe-inc: corrosion-resistant coating- Glass, Solar-Ray light tinted
- Headlamps, halogen, power-operated retractable- Induction system, outside air
- Mirrors, outside rearview, power, heated, body-color- Paint, basecoat/clearcoat
- Rocker duct, rear, functional rear brake cooling- Roof, fixed- Wipers, intermittent, front

Safety

- Seat adjuster, power, driver 6-way
- Seats, front leather seating surfaces bucket, Z06-specific-inc: dual density seatback, back angle adjustment & 6-way power driver seat
- Sound system, ETR AM/FM stereo w/CD player-inc: seek-&-scan, digital clock, auto-tone control, speed-compensated volume & TheftLock
- Air conditioning, dual-zone, automatic-inc: individual climate settings for driver & right front passenger, automatic climate control & outside temperature display
- Antenna, fixed-mast
- Console, floor, lockable-inc: integral cupholder, ashtray, coin holder, auxiliary power outlet & cassette/CD storage
- Cruise control, electronic w/set & resume speed-inc: telltale in instrument panel cluster
- Defogger, rear-window, electric-inc: front & side window outlets, driver & front passenger
- Floor mats, carpeted
- Head-Up Display-inc: digital readouts for vehicle speed, engine rpm, a performance up-shift guide for the 6-speed manual transmission, & readings from key gauges including water temperature, oil pressure & fuel
- Instrumentation, analog, electronic-inc: Driver Information Center
- Keyless entry, remote-inc: panic button & trunk/hatch release
- Lighting, interior, courtesy, cargo console & glovebox
- Mirror, inside rearview, manual day/night-inc: dual reading lights
- Sound system feature, Bose speaker & amplifier system
- Steering column, Tilt-Wheel-inc: (NK4) Steering wheel, leather-wrapped rim
- Storage-inc: lockable glovebox, center console & 3 rear compartments
- Theft-deterrent alarm system- Theft-deterrent system, PASS-Key II
- Tire sealant & inflator kit- Trunk, rear-inc: remote release
- Visors, illuminated vanity mirrors, driver & front passenger
- Windows, power-inc: driver & passenger express-down

Mechanical

- Active handling, improves traction & enhances vehicle stability
- Brakes, 4-wheel antilock, 4-wheel disc- Traction control, all-speed
- Transmission, 6-speed manual- 18.0 gallon fuel tank- Axle, 3.42 ratio, limited slip
- Engine access, rear opening hood-inc: underhood lamp
- Engine, 5.7L LS6 V8 SFI (405 HP [302.1 kW] @ 6000 rpm, 400 lb.-ft. [540.0 N-m] @ 4800 rpm)
- Exhaust outlets, chrome-plated tips- Exhaust, titanium- Rear wheel drive
- Steering, cooler
- Suspension, 4-wheel independent-inc: transverse fiberglass leaf springs

Engine, 5.7L LS6 V8 SFI

(405 HP [302.1 kW] @ 6000 rpm, 400 lb.-ft.
[540.0 N-m] @ 4800 rpm)

- Tires, front P265/40ZR17, non-EMT- Tires, rear, P295/35ZR18, non-EMT
- Wheels, 5-spoke, Z06-specific aluminum 17" x 9.5" (43.2 cm x 24.1 cm), front & 18" x 10.5" (45.7 cm x 26.7 cm), rear
- Z06 Performance Handling Package-inc: stiffer springs, larger stabilizer bar & shock valving

AUTOPARK

Dallas

Auto Park Dallas

View this car on our website at autoparkdallas.com/7119032

Website: autoparkdallas.com

Phone: (214) 945-2601

Map: 2061 S Stemmons Fwy, Lewisville, TX 75067

