



2006 Chevrolet Corvette

Website Price \$32,995

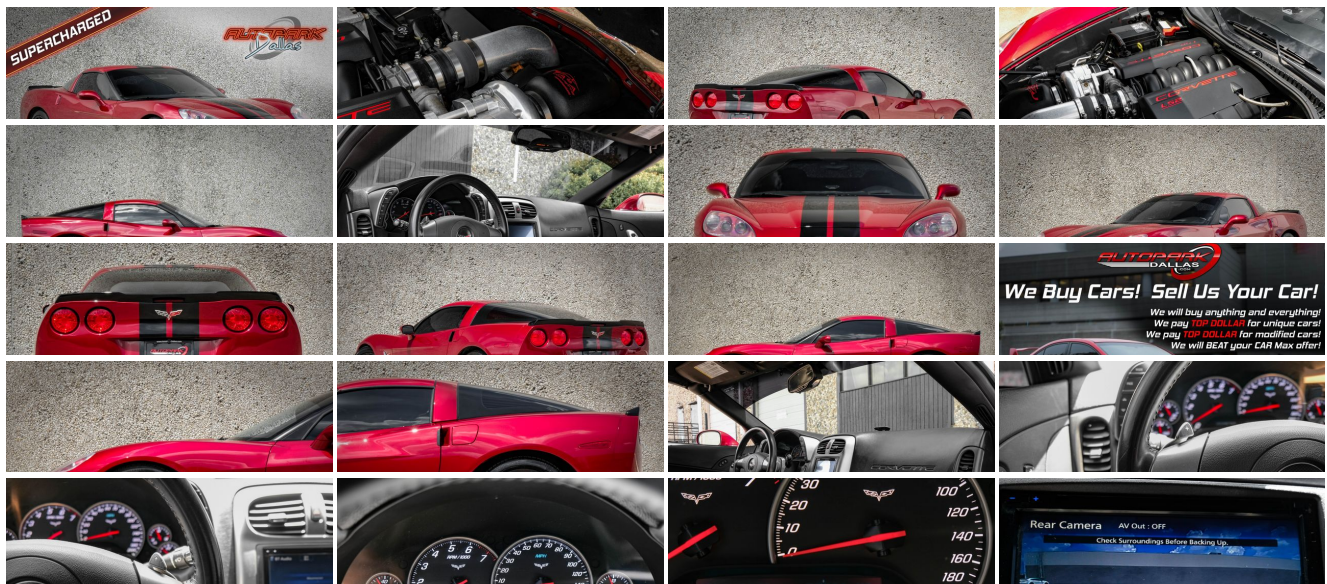
View this vehicle on our website at autoparkdallas.com



(214) 945-2601

2061 S Stemmons Fwy , Lewisville, TX 75067

- Photos
- Details
- Contact



AUTOPARK Dallas
We Buy Cars! Sell Us Your Car!
 We will buy anything and everything!
 We pay **10¢ DOLLAR** for unique cars!
 We pay **TOP DOLLAR** for modified cars!
 We will **BEAT** your CAR Max offer!



Specifications:

Year:	2006
VIN:	1G1YY26UX65103285
Make:	Chevrolet
Stock:	1125
Model/Trim:	Corvette
Condition:	Pre-Owned
Body:	Coupe
Exterior:	Monterey Red Met Tintcoat
Engine:	ENGINE, 6.0L V8 SFI
Interior:	Black Leather
Mileage:	58,202
Drivetrain:	Rear Wheel Drive
Economy:	City 17 / Highway 27

Vehicle Description

AutoPark Dallas is thrilled to offer you this modified Corvette for sale! The American made 2-door coupe that strikes a fire in everyone's heart with a passion for speed, the desire to burn some rubber, and the competitive spirit! There is not a soul that does not know the Corvette, being a low-profile sports car with a signature look that is easily recognizable. Our Corvette we have here at APD is one for the books as it is equipped with a Vortech Procharger capable of over 700 Horsepower!!!! DO! NOT! HESITATE!!! To swing by and check out this gorgeous Corvette parked here in our indoor 16,000 Sq Ft Showroom located in Dallas , Texas amongst our inventory of 100+ other Performance / Modified and Luxury vehicles

2006 Chevrolet Corvette

Modifications!

Vortech V-3 SI Supercharger

Aftermarket Exhaust

JL Subwoofer

JVC Head unit

Aftermarket Chrome Grill

Black Racing Stripes

STOCK!

Monterey Red Metallic Exterior

Black Leather Interior

Targa Top

Dual-zone Air Conditioning

Cruise Control

Steering Wheel Mounted Controls

Moon Roof
Universal Garage Opener
Manual Mode
6.0 Supercharged V8
6 Speed Auto Transmission
Rear Wheel Drive
Professionally Detailed
Well Maintained!
* Free CarFax Report !*
AND SO MUCH MORE!!!

Financing is available!

Check out our Payment Calculator to get an estimate on your monthly payments!

OR

Get pre-approved in no time by filling out a credit application on the 'Finance' section of our website!

Check out our Google Reviews by *Clicking* this [LINK!](#)

Referrals and Testimonials is what our business is built on!

The team here at AutoPark Dallas, is dedicated to offering a level of customer service not usually found in the automobile industry. Thanks to years of extensive car buying / selling experience, we pursue quality used and new vehicles that are hand-picked from factory sources. Our love for automobiles and dislike of traditional dealership tactics is what motivates us to provide the service we do! The pride we take in continuing this service long after the vehicle has been delivered is what we strive for! Looking forward to making every effort to see that our customer is completely satisfied and a friend for life!

Pre-purchase inspections are always welcomed!

We also offer airport pick-up, competitive financing options, free CarFax Reports, Car Shipping nationwide, Extended Warranty plans, and so much more!

Trade-In(s) are always accepted or sell us your used car (MODIFIED OR NOT)! Please call or text for more information about Trade-Ins or selling your car to us @ (214) 945-2601!

#(214) 945-2601

Call or Text *Anytime!*

Se habla Español

WE BUY CARS!

Installed Options

Interior

- Door locks, power, programmable, includes lockout protection
- Keyless Access, with push-button start, includes 2 remote transmitters which enable automatic door unlock and open by touching door switch
- Seats, front bucket with leather seating surfaces, includes back angle adjustment
- Sound system, ETR AM/FM stereo with CD player and MP3 playback, includes Radio Data System, seek-and-scan, digital clock, auto-tone control, automatic volume, Theftlock and (U66) Sound system feature, 7-speaker system
- Steering column, manual, Tilt-Wheel
- Theft-deterrent system, push button start, immobilizer and audible visual alarm
- Air conditioning, dual-zone, automatic, includes individual climate settings for driver and right front passenger, automatic climate control and outside temperature display
- Air filtration, includes pollen filter - Antenna, integral, hidden
- Console, floor, lockable, includes 2 covered cupholders, ashtray with cigar lighter, auxiliary power outlet and CD storage
- Cruise control, electronic with set and resume speed - Defogger, rear-window, electric
- Floor mats, carpeted- Hatch release, push button open (Includes power hatch pulldown.)
- Instrumentation, analog, electronic, includes Driver Information Center with 2 line display
- Lighting, interior, courtesy, cargo and glovebox
- Mirror, inside rearview, manual day/night, includes dual reading lights
- Oil life monitoring system- Seat adjuster, power, driver 6-way
- Steering wheel, leather-wrapped, smaller, 3-spoke
- Storage, includes lockable glovebox, center console and 2 rear compartments with covers
- Tire Pressure Monitor System, air pressure sensors in each tire, pressure display in Driver Information Center
- Visors, illuminated vanity mirrors, driver and front passenger
- Windows, power, includes driver and passenger express-down

Exterior

- Daytime running lamps- Fog lamps, front, integral in fascia- Glass, Solar-Ray light tinted
- Headlamps, dual projector lamps, xenon high-intensity discharge low-beam, tungsten-halogen high-beam, includes automatic exterior lamp control
- Mirrors, outside rearview, power, heated, body-color
- Roof panel, removable, 1-piece, body-color- Wipers, intermittent, front

Safety

- Door locks, power, programmable, includes lockout protection
- Keyless Access, with push-button start, includes 2 remote transmitters which enable automatic door unlock and open by touching door switch
- Seats, front bucket with leather seating surfaces, includes back angle adjustment
- Sound system, ETR AM/FM stereo with CD player and MP3 playback, includes Radio Data System, seek-and-scan, digital clock, auto-tone control, automatic volume, Theftlock and (U66) Sound system feature, 7-speaker system
- Steering column, manual, Tilt-Wheel
- Theft-deterrent system, push button start, immobilizer and audible visual alarm
- Air conditioning, dual-zone, automatic, includes individual climate settings for driver and right front passenger, automatic climate control and outside temperature display
- Air filtration, includes pollen filter - Antenna, integral, hidden
- Console, floor, lockable, includes 2 covered cupholders, ashtray with cigar lighter, auxiliary power outlet and CD storage
- Cruise control, electronic with set and resume speed - Defogger, rear-window, electric
- Floor mats, carpeted- Hatch release, push button open (Includes power hatch pulldown.)
- Instrumentation, analog, electronic, includes Driver Information Center with 2 line display
- Lighting, interior, courtesy, cargo and glovebox
- Mirror, inside rearview, manual day/night, includes dual reading lights
- Oil life monitoring system- Seat adjuster, power, driver 6-way
- Steering wheel, leather-wrapped, smaller, 3-spoke
- Storage, includes lockable glovebox, center console and 2 rear compartments with covers
- Tire Pressure Monitor System, air pressure sensors in each tire, pressure display in Driver Information Center
- Visors, illuminated vanity mirrors, driver and front passenger
- Windows, power, includes driver and passenger express-down

Mechanical

- Active handling, improves traction and enhances vehicle stability

Option Packages

Factory Installed Packages

ENGINE, 6.0L V8 SFI
(400 HP [298.3 kW] @ 6000 rpm, 400 lb.-ft.
[542.8 N-m] @ 4400 rpm)

- Axle, 3.42 ratio, limited slip (Included and only available with (MN6) Transmission, 6-speed manual.)
- Brakes, 4-wheel antilock, 4-wheel disc- Traction control, all-speed
- Transmission, 6-speed manual, short-throw (Includes (GU6) Axle, 3.42 ratio.)
- Wheels, 5-spoke silver painted aluminum, 18" x 8.5" (45.7 cm x 21.6 cm), front and 19" x 10.0" (48.3 cm x 25.4 cm), rear
- Engine access, rear opening hood, includes underhood lamp
- Engine, 6.0L V8 SFI (400 HP [298.3 kW] @ 6000 rpm, 400 lb.-ft. [542.8 N-m] @ 4400 rpm)
- Exhaust, aluminized stainless-steel with polished 3" stainless-steel tips
- Fuel capacity, approximate, 18 gallon (68 liters) - Rear wheel drive
- Steering, power, speed-sensitive, rack and pinion
- Suspension, 4-wheel independent, includes transverse fiberglass leaf springs
- Tires, front P245/40ZR18, extended mobility, Eagle F1
- Tires, rear P285/35ZR19, extended mobility, Eagle F1

AUTOPARK

Dallas

Auto Park Dallas

View this car on our website at autoparkdallas.com/7119027

Website: autoparkdallas.com

Phone: (214) 945-2601

Map: 2061 S Stemmons Fwy, Lewisville, TX 75067

