



2015 Subaru WRX STI Launch Edition

Website Price \$26,995

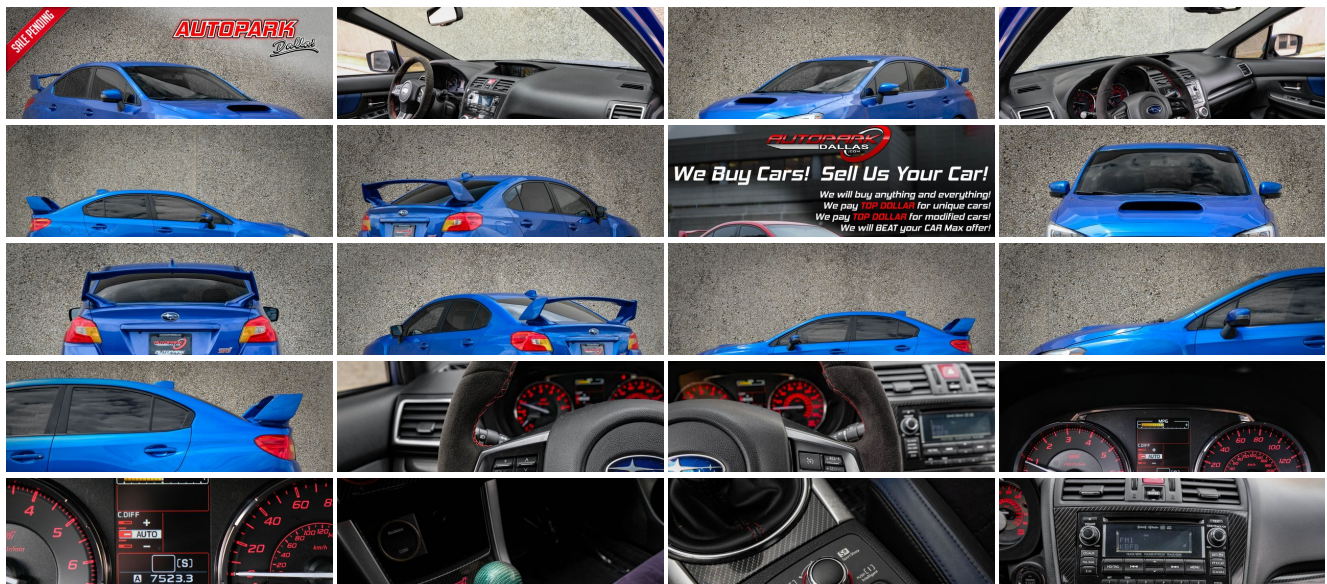
View this vehicle on our website at autoparkdallas.com



(214) 945-2601

2061 S Stemmons Fwy , Lewisville, TX 75067

- Photos
- Details
- Contact



Specifications:

Year:	2015
VIN:	JF1VA2W64F9800627
Make:	Subaru
Stock:	1054
Model/Trim:	WRX STI Launch Edition
Condition:	Pre-Owned
Body:	Sedan
Exterior:	WR Blue Pearl
Engine:	Engine: 2.5L DOHC Intercooled High Boost DAVCS -inc: Turbocharged, variable valve timing, Electronic Throttle Control (ETC), and SI-DRIVE engine performance management
Interior:	Black
Transmission:	6-SPEED MANUAL
Mileage:	76,394
Drivetrain:	All Wheel Drive
Economy:	City 17 / Highway 23

Vehicle Description

AutoPark Dallas is thrilled to offer you this 2015 Subaru WRX STI Launch Edition for sale! The STI model line of Subaru has always held a special place in the world of Japanese car culture and JDM enthusiasts, so when Subaru launched the all-new VA Generation WRX STI in 2015, they knew they had to kick things off with a bang! Enter the 2015 STI Launch Edition - the very first VA-Generation WRX STI to be offered for sale, **limited to only 1,000 produced**, in the exclusive **World Rally Blue Pearl** exterior over an exclusive **Black/Blue Leather and Alcantara** interior, and riding on (once again exclusive) **BBS Forged Alloy Wheels finished in Gold**. Of course, it had to be WR Blue with Gold Wheels, in a not so subtle nod to the dominant heritage of the Subaru brand in World Rally Competition (WRC). These days, finding a Launch Edition STI with that elusive color combination has become harder and harder, and now that the VA Generation has become the LAST of the non-hybrid STI generations to be produced, these models have already been steadily increasing in value. All of that aside, this STI comes with quite a bit of performance upgrades to really take it to that next level of both performance and reliability! The full mod list can be seen below, but some of the highlights include a **Cobb Intake, Cobb Flex Fuel Tune, High Flow Fuel Injectors, Nameless Performance Muffler Delete, Radium Oil Catch Can**, and much more! Between the exclusivity of this Launch Edition trim, and the superb quality of the upgraded performance items, this STI is one not to be missed! DO! NOT! HESITATE!!! To swing by and check out this 2015 STI Launch Edition that we have parked here in our indoor 16,000 Sq Ft Showroom located in Dallas, Texas amongst our inventory of 100+ other Unique / Modified and Luxury Vehicles!

2015 Subaru WRX STI Launch Edition

MODIFICATIONS

COBB BIG SF INTAKE SYSTEM

COBB FLEX FUEL TUNE

COBB LF BPV (LIGHTWEIGHT BYPASS VALVE)

FUEL INJECTOR CLINIC HIGH FLOW FUEL INJECTORS

GRIMSPEED 3-PORT BOOST CONTROL SOLENOID

AMR PERFORMANCE ALUMINUM TURBO INLET

RADIUM OIL CATCH CAN

LIGHTWEIGHT CRANK PULLEY

PERRIN BELT COVER

PERRIN THROTTLE BODY HOSE

NAMELESS PERFORMANCE MUFFLER DELETE

ZEITRONIX ETHANOL CONTENT DIGITAL GAUGE

RALLY ARMOUR MUD FLAPS

OEM TYPE RA STEERING WHEEL

AFTERMARK ET SHIFT KNOB

FOG LIGHTS IN YELLOW

STOCK

LAUNCH EDITION (ONLY 1,000 TOTAL PRODUCED)

OEM BBS WHEELS IN GOLD (LAUNCH EDITION EXCLUSIVE)

WORLD RALLY BLUE EXTERIOR (LAUNCH EDITION EXCLUSIVE)

BLACK/BLUE LEATHER AND ALCANTARA INTERIOR (LAUNCH EDITION EXCLUSIVE)

KEYLESS ACCESS/START

STI SHORT THROW SHIFTER

2.5L TURBOCHARGED FOUR-CYLINDER ENGINE (EJ257)

6-SPEED MANUAL TRANSMISSION

Financing is available!

Check out our Payment Calculator to get an estimate on your monthly payments!

OR

Get pre-approved in no time by filling out a credit application on the 'Finance' section of our website!

We also offer MANY different Extended Warranty options!

Check out our Google Reviews by *Clicking* this LINK!

Referrals and Testimonials is what our business is built on!

The team here at AutoPark Dallas, is dedicated to offering a level of customer service not usually found in the automobile industry. Thanks to years of extensive car buying / selling experience, we pursue quality used and new vehicles that are hand-picked from factory sources. Our love for automobiles and dislike of traditional dealership tactics is what motivates us to provide the service we do! The pride we take in continuing this service long after the vehicle has been delivered is what we strive for! Looking forward to making every effort to see that our customer is completely satisfied and a friend for life!

Pre-purchase inspections are always welcomed!

We also offer airport pick-up, competitive financing options, free CARFAX Reports, Car Shipping nationwide, Extended Warranty plans, and so much more!

Trade-In(s) are always accepted or sell us your used car (MODIFIED OR NOT)! Please call or text for more information about Trade-Ins or selling your car to us @ (214) 945-2601!

#(214) 945-2601

Call or Text **Anytime!**

Se habla Español

WE BUY CARS!

WWW.AUTOPARKDALLAS.COM

Installed Options

Interior

- Alcantara Upholstery w/Bolsters & Highlights- FOB Controls -inc: Cargo Access
- Full Carpet Floor Covering -inc: Carpet Front And Rear Floor Mats
- Gauges -inc: Speedometer, Odometer, Engine Coolant Temp, Tachometer, Turbo/Supercharger Boost, Trip Odometer and Trip Computer
- Perimeter Alarm- Power 1st Row Windows w/Driver 1-Touch Up/Down
- Power Door Locks- Power Rear Windows
- Proximity Key For Doors And Push Button Start
- Remote Keyless Entry w/Integrated Key Transmitter, Illuminated Entry, Illuminated Ignition Switch and Panic Button
- Trip Computer- 2 12V DC Power Outlets
- 4-Way Passenger Seat -inc: Manual Recline and Fore/Aft Movement
- 60-40 Folding Bench Front Facing Fold Forward Seatback Rear Seat - Air Filtration
- Analog Appearance- Cargo Area Concealed Storage- Cargo Space Lights
- Carpet Floor Trim and Carpet Trunk Lid/Rear Cargo Door Trim
- Cruise Control w/Steering Wheel Controls- Day-Night Rearview Mirror
- Driver And Passenger Visor Vanity Mirrors w/Driver And Passenger Illumination
- Driver Foot Rest- Driver Seat- Dual Zone Front Automatic Air Conditioning
- Fade-To-Off Interior Lighting- Front Center Armrest and Rear Center Armrest
- Front Cupholder- Front Map Lights- Full Cloth Headliner
- Full Floor Console w/Covered Storage and 2 12V DC Power Outlets
- HVAC -inc: Underseat Ducts- Illuminated Locking Glove Box- Immobilizer
- Instrument Panel Bin, Driver / Passenger And Rear Door Bins
- Interior Trim -inc: Simulated Carbon Fiber Instrument Panel Insert, Metal-Look Door Panel Insert, Simulated Carbon Fiber/Metal-Look Console Insert and Chrome/Aluminum Interior Accents
- Leather Gear Shifter Material- Leatherette Door Trim Insert
- Manual Adjustable Rear Head Restraints- Manual Tilt/Telescoping Steering Column
- Outside Temp Gauge
- Performance Design Front Heated Bucket Seats -inc: height adjustable driver's seat, height and tilt adjustable head restraints w/embossed STI logo, and front passenger seatback pocket
- Rear Cupholder- Remote Releases -Inc: Power Cargo Access and Mechanical Fuel
- Seats w/Leatherette Back Material- Sport Leather/Metal-Look Steering Wheel
- Systems Monitor- Valet Function

Exterior

- Auto Off Projector Beam Led Low Beam Daytime Running Auto-Leveling Headlamps
- Black Grille- Black Side Windows Trim and Black Front Windshield Trim
- Body-Colored Door Handles- Body-Colored Front Bumper

Option Packages

Factory Installed Packages

LAUNCH EDITION

WR BLUE PEARL

BLACK, ALCANTARA UPHOLSTERY W/BOLSTERS & HIGHLIGHTS

- Body-Colored Door Handles- Body-Colored Front Bumper
- Body-Colored Power Heated Side Mirrors w/Manual Folding and Turn Signal Indicator
- Body-Colored Rear Bumper- Clearcoat Paint
- Compact Spare Tire Mounted Inside Under Cargo- Fixed Rear Window w/Defroster
- Front Fog Lamps- Front License Plate Bracket- Front Windshield -inc: Sun Visor Strip
- Galvanized Steel/Aluminum Panels- LED Brakelights- Light Tinted Glass
- Rocker Panel Extensions- Steel Spare Wheel
- Tires: P245/40R18 97W Summer Performance- Trunk Rear Cargo Access
- Variable Intermittent Wipers w/Heated Wiper Park
- Wheels: 18" x 8.5J BBS Brand w/Gold Finish -inc: Forged aluminum alloy - Wing Spoiler

Safety

- Alcantara Upholstery w/Bolsters & Highlights- FOB Controls -inc: Cargo Access
- Full Carpet Floor Covering -inc: Carpet Front And Rear Floor Mats
- Gauges -inc: Speedometer, Odometer, Engine Coolant Temp, Tachometer, Turbo/Supercharger Boost, Trip Odometer and Trip Computer
- Perimeter Alarm- Power 1st Row Windows w/Driver 1-Touch Up/Down
- Power Door Locks- Power Rear Windows
- Proximity Key For Doors And Push Button Start
- Remote Keyless Entry w/Integrated Key Transmitter, Illuminated Entry, Illuminated Ignition Switch and Panic Button
- Trip Computer- 2 12V DC Power Outlets
- 4-Way Passenger Seat -inc: Manual Recline and Fore/Aft Movement
- 60-40 Folding Bench Front Facing Fold Forward Seatback Rear Seat - Air Filtration
- Analog Appearance- Cargo Area Concealed Storage- Cargo Space Lights
- Carpet Floor Trim and Carpet Trunk Lid/Rear Cargo Door Trim
- Cruise Control w/Steering Wheel Controls- Day-Night Rearview Mirror
- Driver And Passenger Visor Vanity Mirrors w/Driver And Passenger Illumination
- Driver Foot Rest- Driver Seat- Dual Zone Front Automatic Air Conditioning
- Fade-To-Off Interior Lighting- Front Center Armrest and Rear Center Armrest
- Front Cupholder- Front Map Lights- Full Cloth Headliner
- Full Floor Console w/Covered Storage and 2 12V DC Power Outlets
- HVAC -inc: Underseat Ducts- Illuminated Locking Glove Box- Immobilizer
- Instrument Panel Bin, Driver / Passenger And Rear Door Bins
- Interior Trim -inc: Simulated Carbon Fiber Instrument Panel Insert, Metal-Look Door Panel Insert, Simulated Carbon Fiber/Metal-Look Console Insert and Chrome/Aluminum Interior Accents
- Leather Gear Shifter Material- Leatherette Door Trim Insert
- Manual Adjustable Rear Head Restraints- Manual Tilt/Telescoping Steering Column
- Outside Temp Gauge
- Performance Design Front Heated Bucket Seats -inc: height adjustable driver's seat, height and tilt adjustable head restraints w/embossed STI logo, and front passenger seatback pocket
- Rear Cupholder- Remote Releases -Inc: Power Cargo Access and Mechanical Fuel
- Seats w/Leatherette Back Material- Sport Leather/Metal-Look Steering Wheel
- Systems Monitor- Valet Function

Mechanical

- 110 Amp Alternator- 15.9 Gal. Fuel Tank- 3.90 Axle Ratio
- 4-Wheel Disc Brakes w/4-Wheel ABS, Front And Rear Vented Discs, Brake Assist and Hill Hold Control
- 48-Amp/Hr Maintenance-Free Battery
- Double Wishbone Rear Suspension w/Coil Springs- Engine Oil Cooler
- Engine: 2.5L DOHC Intercooled High Boost DAVCS -inc: Turbocharged, variable valve timing, Electronic Throttle Control (ETC), and SI-DRIVE engine performance management
- Front And Rear Anti-Roll Bars- Full-Time All-Wheel- Gas-Pressurized Shock Absorbers
- Hydraulic Power-Assist Speed-Sensing Steering- Mechanical Limited Slip Differential
- Quasi-Dual Stainless Steel Exhaust w/Polished Tailpipe Finisher
- Sport Tuned Suspension- Strut Front Suspension w/Coil Springs
- Transmission: 6-Speed Close-Ratio Manual

AUTOPARK

Dallas

Auto Park Dallas

View this car on our website at autoparkdallas.com/7119022

Website: autoparkdallas.com

Phone: (214) 945-2601

Map: 2061 S Stemmons Fwy, Lewisville, TX 75067

