



2001 Mercedes-Benz E320

Our Price \$3,100

View this vehicle on our website at blokauto.com



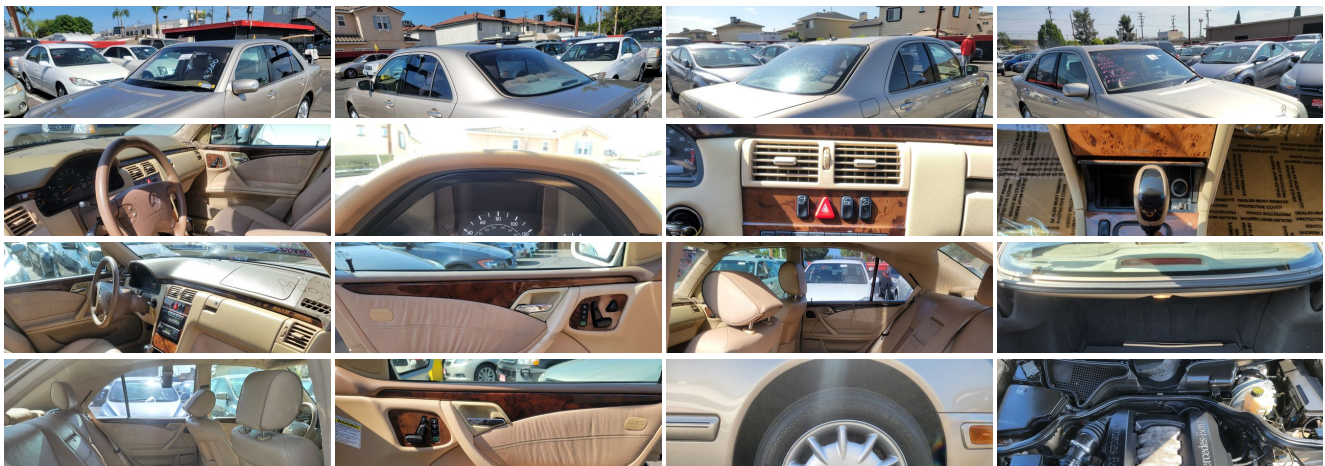
[310-326-3604](tel:310-326-3604)

9624 Artesia Blvd , Bellflower, California 90706

[Photos](#)

[Details](#)

[Contact](#)



Specifications:

| | |
|---------------|--|
| Year: | 2001 |
| VIN: | WDBJF65J21B216329 |
| Make: | Mercedes-Benz |
| Stock: | 77409 |
| Model/Trim: | E320 |
| Condition: | Pre-Owned |
| Body: | Sedan |
| Exterior: | Desert Silver Metallic |
| Engine: | 3.2L SOHC SMPI 18-valve aluminum-alloy V6 engine |
| Interior: | Leather |
| Transmission: | Auto |
| Mileage: | 170,732 |
| Drivetrain: | Rear Wheel Drive |
| Economy: | City 20 / Highway 28 |

Vehicle Description

Please call or e-mail to check availability!!! All of our vehicles are available for purchase Monday through Sunday from 8:00am-5:00pm. Please note we do not offer any financing and/or payment plans of any kind. For more information, please call (310)-326-3604 and press 1 for the sales department. We are currently not having any auctions on Saturdays due to Covid 19.

WHEN CALLING THE SALES DEPARTMENT, PLEASE PROVIDE THE STOCK NUMBER FOR THE VEHICLE YOU ARE INTERESTED IN!!!

WE HAVE 300+ CARS AT OUR LOCATION!!! WE RECEIVE NEW CARS EVERY WEEK AND OUR WEBSITE IS UPDATED ON A DAILY BASIS!!!

VISIT WWW.BLOKAUTO.COM TO SEE OUR FULL INVENTORY!!!

Installed Options

Interior

- 10-way pwr front bucket seats w/head restraints
- 3 position memory for driver/front passenger seats/steering column/mirrors/ headrests
- Dual-mode SmartKey system-inc: remote window opening, trunk opener w/valet lockout, doors/trunk/filler cap unlocking & key copy protection
- Fiber-optic AM/FM/weather band stereo radio w/concealed auto-reverse cassette -inc: seek/scan, multifunction keypad, 4 in 1 control soft keys, CD changer/ phone controls, anti-theft coding, speed compensated volume
- Leather interior-inc: seating surfaces, door trim inserts, head restraints, front seat backs, & map pockets
- Pwr door locks- Pwr windows w/express down/up- 8-speaker sound system
- Active charcoal climate control filter- Antenna for cellular telephone
- Anti-theft alarm system- Auto dimming rearview mirror
- Automatic dual-zone climate control-inc: air/dust filters, sun/smog sensors, engine heat recirculation feature (REST)
- Center console-inc: front armrest w/upper & climate controlled lower storage

- Compact disc/cellular telephone pre-wiring- Cruise control
- Dual front/rear retractable cup holders- Dual illuminated visor vanity mirrors
- Electrically heated rear window- Entrance lamps
- Fold-down second seat armrest w/dual slide-out cup holders
- Front courtesy lights w/delay shutoff- Front passenger reading lamp
- Front/rear door storage pockets- Genuine burl walnut trim
- Instrumentation-inc: speedometer, odometer, trip odometer, tachometer, fuel/ temp gauges, outside temp display, quartz clock
- Leather-covered steering wheel/shift knob
- Manual adjust, remote fold-down rear head restraints
- Parking brake on/headlights on audible alert- Pwr tilt/telescoping steering column
- Pwr-adjustable front headrests- Rear courtesy light- Rear window antenna
- Universal garage door opener- Velour floor carpeting/mats
- Warning lights-inc: seat belt, key-in-ignition, headlamps on, brake, ABS, Brake Assist, parking brake on, airbag, traction control, exterior lamp failure, low fuel/oil/coolant/washer fluid, check engine

Exterior

- Dual heated pwr remote outside rearview mirrors w/RH mirror reverse tilt down
- Front/rear fog lamps- Intermittent single-arm windshield wiper/heated washer system
- 4 free-form halogen headlamps- Auto dimming driver mirror- Wraparound taillamps

Safety

- 10-way pwr front bucket seats w/head restraints
- 3 position memory for driver/front passenger seats/steering column/mirrors/ headrests
- Dual-mode Smartkey system-inc: remote window opening, trunk opener w/valet lockout, doors/trunk/filler cap unlocking & key copy protection
- Fiber-optic AM/FM/weather band stereo radio w/concealed auto-reverse cassette -inc: seek/scan, multifunction keypad, 4 in 1 control soft keys, CD changer/ phone controls, anti-theft coding, speed compensated volume
- Leather interior-inc: seating surfaces, door trim inserts, head restraints, front seat backs, & map pockets
- Pwr door locks- Pwr windows w/express down/up- 8-speaker sound system
- Active charcoal climate control filter- Antenna for cellular telephone
- Anti-theft alarm system- Auto dimming rearview mirror
- Automatic dual-zone climate control-inc: air/dust filters, sun/smog sensors, engine heat recirculation feature (REST)
- Center console-inc: front armrest w/upper & climate controlled lower storage
- Compact disc/cellular telephone pre-wiring- Cruise control
- Dual front/rear retractable cup holders- Dual illuminated visor vanity mirrors
- Electrically heated rear window- Entrance lamps
- Fold-down second seat armrest w/dual slide-out cup holders
- Front courtesy lights w/delay shutoff- Front passenger reading lamp
- Front/rear door storage pockets- Genuine burl walnut trim
- Instrumentation-inc: speedometer, odometer, trip odometer, tachometer, fuel/ temp gauges, outside temp display, quartz clock
- Leather-covered steering wheel/shift knob
- Manual adjust, remote fold-down rear head restraints
- Parking brake on/headlights on audible alert- Pwr tilt/telescoping steering column
- Pwr-adjustable front headrests- Rear courtesy light- Rear window antenna
- Universal garage door opener- Velour floor carpeting/mats
- Warning lights-inc: seat belt, key-in-ignition, headlamps on, brake, ABS, Brake Assist, parking brake on, airbag, traction control, exterior lamp failure, low fuel/oil/coolant/washer fluid, check engine

Mechanical

- 16" X 7.5" 10-spoke aluminum wheels - 215/55HR16 all season SBR tires
 - 4-channel anti-lock brake system (ABS)- Automatic slip control (ASR)
 - Brake assist system (applies full braking pwr automatically when needed)
 - Electronic Stability Program (ESP)
 - 3.2L SOHC SMPI 18-valve aluminum-alloy V6 engine
 - 4-wheel pwr disc brakes (front vented)
 - 5-speed electronically controlled automatic transmission-inc: "winter" mode, adaptive controls, OD
 - Front/rear stabilizer bar, gas-pressurized shock absorbers, coil springs
 - Full-size spare tire
 - Independent double wishbone front suspension w/triangular lower control arms, anti-dive/anti-lift geometry
 - Independent five-link rear suspension-inc: anti-lift/anti-squat geometry, alignment control
 - Rear wheel drive- Variable rate pwr rack & pinion steering
-

BLOK Charity Auto Clearance

BLOK Charity Auto Clearance

View this car on our website at blokauto.com/7118696

Website: blokauto.com

Phone: [310-326-3604](tel:310-326-3604)

Map: [9624 Artesia Blvd, Bellflower, California 90706](#)

