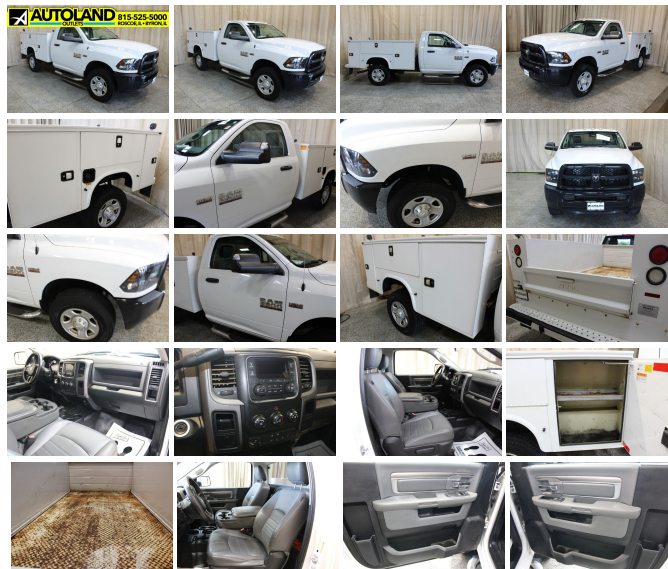


## 2015 Ram 2500 Tradesman Service Box 4x4 Long Box

View this car on our website at [autolandoutlets.com/7117588/ebrochure](http://autolandoutlets.com/7117588/ebrochure)



Our Price **\$39,946**

**Specifications:**

**Year:** 2015  
**VIN:** 3C7WR5AJ8FG543351  
**Make:** Ram  
**Stock:** 11269  
**Model/Trim:** 2500 Tradesman Service Box 4x4 Long Box  
**Condition:** Pre-Owned  
**Body:** Pickup Truck  
**Exterior:** Bright White Clearcoat  
**Engine:** ENGINE: 6.4L V8 MID DUTY HEMI MDS  
**Interior:** Gray Vinyl  
**Transmission:** TRANSMISSION: 6-SPEED AUTOMATIC (66RFE)  
**Mileage:** 63,078  
**Drivetrain:** 4 Wheel Drive

Just arrived!! Vehicle has been detailed and inspected runs and drives great!! Autoland Outlets is proud to offer this 2015 Dodge Ram Reg.Cab Service Body. Options include Heavy Duty Snow Plow Package,Power and Remote Entry Group,Trailer Brake Controller,4.10 Rear Ratio,

## Our Location :



2015 Ram 2500 Tradesman Service Box 4x4 Long Box

Autoland Outlets - 877-319-6060 - View this car on our website at [autolandoutlets.com/7117588/ebrochure](http://autolandoutlets.com/7117588/ebrochure)

## Installed Options

### Interior

- 2 12V DC Power Outlets- Analog Appearance- Cruise Control w/Steering Wheel Controls
- Day-Night Rearview Mirror- Delayed Accessory Power- Driver Seat
- Electronically Controlled Throttle- Fade-To-Off Interior Lighting
- Front Armrest w/Cupholders- Full Cloth Headliner- Full Vinyl/Rubber Floor Covering
- Gauges -inc: Speedometer, Odometer, Voltmeter, Oil Pressure, Engine Coolant Temp, Tachometer, Oil Temperature, Transmission Fluid Temp, Engine Hour Meter and Trip Odometer
- Glove Box- Heavy Duty Vinyl 40/20/40 Split Bench Seat- Immobilizer
- Instrument Panel Bin, Dashboard Storage, Driver And Passenger Door Bins
- Interior Trim -inc: Metal-Look Instrument Panel Insert and Chrome/Metal-Look Interior Accents
- Manual 1st Row Windows- Manual Adjustable Front Head Restraints
- Manual Air Conditioning- Manual Tilt Steering Column
- Partial Floor Console w/Storage and 2 12V DC Power Outlets- Passenger Seat
- Pickup Cargo Box Lights- Systems Monitor- Urethane Gear Shifter Material

### Exterior

- Auto On/Off Aero-Composite Halogen Headlamps w/Delay-Off - Black Door Handles
- Black Front Bumper- Black Grille- Black Manual Side Mirrors w/Manual Folding
- Black Rear Step Bumper- Black Side Windows Trim and Black Front Windshield Trim
- Cargo Lamp w/High Mount Stop Light- Center Hub- Clearcoat Paint
- Firestone Brand Tires- Fixed Rear Window- Front License Plate Bracket
- Full-Size Spare Tire Stored Underbody w/Crankdown- Fully Galvanized Steel Panels
- Light Tinted Glass- Manual Tailgate/Rear Door Lock- Regular Box Style
- Steel Spare Wheel- Tailgate Rear Cargo Access- Tires: LT245/70R17E BSW AS
- Variable Intermittent Wipers- Wheels: 17" x 7.5" Steel Styled

### Safety

- 2 12V DC Power Outlets- Analog Appearance- Cruise Control w/Steering Wheel Controls
- Day-Night Rearview Mirror- Delayed Accessory Power- Driver Seat
- Electronically Controlled Throttle- Fade-To-Off Interior Lighting
- Front Armrest w/Cupholders- Full Cloth Headliner- Full Vinyl/Rubber Floor Covering
- Gauges -inc: Speedometer, Odometer, Voltmeter, Oil Pressure, Engine Coolant Temp, Tachometer, Oil Temperature, Transmission Fluid Temp, Engine Hour Meter and Trip Odometer
- Glove Box- Heavy Duty Vinyl 40/20/40 Split Bench Seat- Immobilizer
- Instrument Panel Bin, Dashboard Storage, Driver And Passenger Door Bins
- Interior Trim -inc: Metal-Look Instrument Panel Insert and Chrome/Metal-Look Interior Accents
- Manual 1st Row Windows- Manual Adjustable Front Head Restraints
- Manual Air Conditioning- Manual Tilt Steering Column
- Partial Floor Console w/Storage and 2 12V DC Power Outlets- Passenger Seat
- Pickup Cargo Box Lights- Systems Monitor- Urethane Gear Shifter Material

## Mechanical

- 160 Amp Alternator- 2670# Maximum Payload- 3.73 Rear Axle Ratio- 32 Gal. Fuel Tank
- 4-Wheel Disc Brakes w/4-Wheel ABS, Front And Rear Vented Discs, Brake Assist and Hill Hold Control
- 50 State Emissions- 730CCA Maintenance-Free Battery w/Run Down Protection
- Auto Locking Hubs- Class V Towing Equipment -inc: Hitch and Trailer Sway Control
- Engine: 5.7L V8 HEMI VVT- Front Anti-Roll Bar- Front Bumper Sight Shields
- GVWR: 9,000 lbs- HD Shock Absorbers- Hydraulic Power-Assist Steering
- Manual Transfer Case- Multi-Link Front Suspension w/Coil Springs
- Part-Time Four-Wheel Drive- Single Stainless Steel Exhaust
- Solid Axle Rear Suspension w/Coil Springs- Tip Start- Trailer Wiring Harness
- Transmission w/Driver Selectable Mode, Sequential Shift Control and Oil Cooler
- Transmission: 6-Speed Automatic (66RFE)

## Option Packages

### Factory Installed Packages

ENGINE: 6.4L V8 MID DUTY HEMI MDS  
-inc: 180 Amp Alternator, GVWR: \$1,395  
10,000 lbs, Next Generation  
Engine Controller, Hemi Badge

TRANSMISSION: 6-SPEED AUTOMATIC  
(66RFE)

ANTI-SPIN DIFFERENTIAL REAR AXLE  
\$325

CLEARANCE LAMPS  
\$80

HEAVY DUTY SNOW PLOW PREP  
GROUP  
\$135

I/P MOUNTED AUXILIARY SWITCHES  
\$130

POWER & REMOTE ENTRY GROUP  
-inc: Remote Keyless Entry, Power  
Accessory Group, Exterior  
Mirrors w/Heating Element,  
Power Windows w/Front 1-  
Touch Down, Fold-Away  
Power Heated Mirrors, Black  
Exterior Mirrors, Premium Vinyl  
Door Trim w/Map Pocket,  
Power Locks  
\$735

POWER BLACK TRAILER TOW	
MIRRORS	
-inc: Exterior Mirrors w/Supplemental Signals, Exterior Mirrors w/Heating Element, Black Exterior Mirrors, Exterior Mirrors Courtesy Lamps, Trailer Tow Mirrors	\$180
-	
TRAILER BRAKE CONTROL	
	\$230
-	
4.10 REAR AXLE RATIO	
	\$125
-	
QUICK ORDER PACKAGE 22A	
TRADESMAN	
-inc: Engine: 6.4L V8 Mid Duty HEMI MDS. Transmission: 6- Speed Automatic (66RFE)	
-	
STANDARD PAINT	
-	
BRIGHT WHITE CLEARCOAT	
-	
DIESEL GRAY/BLACK, HEAVY DUTY VINYL 40/20/40 SPLIT BENCH SEAT	
-	
Option Packages Total	\$3,335

Autoland Outlets  
[autolandoutlets.com](http://autolandoutlets.com)  
877-319-6060

13156 Love Rd  
Roscoe, IL 61073

© 2023 AutoRevo - All rights reserved. - Powered by AutoRevo