

2022 Jeep Wrangler Unlimited Rubicon 392 SKY TOP,DUPONT KEVLAR,BUMPERS

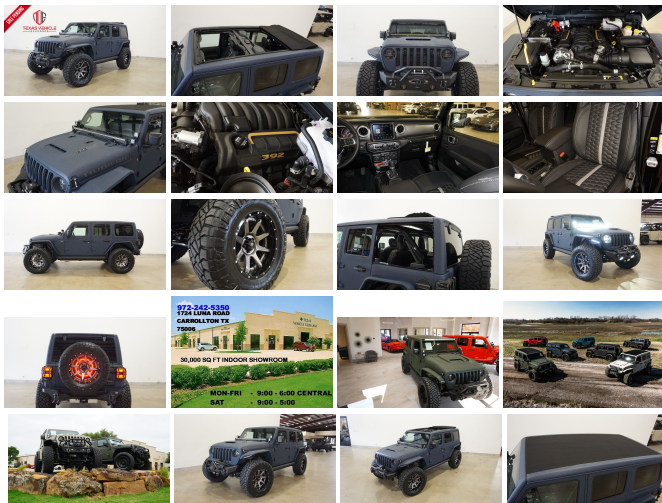
View this car on our website at tveauto.com/7117074/ebrochure



Our Price **\$139,900**

Specifications:

Year:	2022
VIN:	1C4JJXSJ3NW239059
Make:	Jeep
Stock:	239059
Model/Trim:	Wrangler Unlimited Rubicon 392 SKY TOP,DUPONT KEVLAR,BUMPERS
Condition:	Pre-Owned
Body:	SUV
Exterior:	Blue
Engine:	ENGINE: 6.4L V8 SRT HEMI MDS
Interior:	Black Leather
Transmission:	TRANSMISSION: 8-SPEED AUTOMATIC (8HP75)
Mileage:	48
Drivetrain:	4 Wheel Drive
Economy:	City 13 / Highway 17



NATION WIDE FINANCING

SUBMIT CREDIT APP WWW.TVEAUTO.COM

OR CALL 972-242-5350

"FERRARI NART BLUE EDITION"

CUSTOM BUILT **KEVLAR** 2022 JEEP
WRANGLER JL UNLIMITED RUBICON 4X4
WITH 27X PACKAGE

UPGRADES INCLUDE:

- * FERRARI NART BLUE KEVLAR COATING WITH ANTHRACITE ACCENTS
- * 6.4L V8 SRT HEMI ENGINE
- * SKY ONE-TOUCH POWER TOP WITH REMOVABLE REAR QUARTER WINDOWS
- * CUSTOM ALEA BLACK LEATHER WITH SILVER STITCHING
- * FACTORY REMOTE START
- * REMOTE PROXIMITY KEYLESS ENTRY
- * COLD WEATHER GROUP
- * LED LIGHTING GROUP
- * SAFETY GROUP
- * ADVANCED SAFETY GROUP
- * FACTORY 8.4 INCH TOUCH SCREEN NAVIGATION WITH HD AM/FM/SIRIUS STEREO & ALPINE PREMIUM AUDIO SYSTEM
- * FACTORY BACK-UP CAMERA
- * U-CONNECT
- * RUGGED RIDGE HD X STRIKER STUBBY FRONT BUMPER WITH LED FOGLIGHTS
- * FRONT D-RINGS & ISOLATORS (ANTHRACITE)
- * SMITTYBILT NEW GEN II "X20" 10,000 LB WATERPROOF AND WIRELESS CONTROL WINCH WITH SYNTHETIC ROPE
- * FACTOR 55 PROLINK (BLACK)
- * FACTORY LED HEADLIGHTS
- * RUGGED RIDGE BLACK HEADLIGHT GUARDS
- * FACTORY HOOD WITH AIR INTAKE SCOOP
- * DRAKE OFF ROAD HOOD LATCHES
- * ROAD ARMOR STEALTH JL FENDER FLARES

- * DV8 OFF ROAD FRONT & REAR INNER FENDERS
- * TERAFLX FALCON STABILIZER KIT
- * MOPAR AUXILIARY SWITCH BANK KIT
- * 50" LED LIGHT BAR AND 4 RIGID INDUSTRIES DUALY D2 LED PILLAR LIGHTS
- * AMP RESEARCH POWERSTEP XL RUNNING BOARDS WITH LED LIGHT KIT
- * EVOLUTION 2 BLACK LED TAIL LIGHTS
- * RUGGED RIDGE BLACK TAIL LIGHT GUARDS
- * RUGGED RIDGE SPARTACUS HD HINGE KIT
- * RUGGED RIDGE LED THIRD BRAKE LIGHT RING
- * DV8 OFF ROAD REAR BUMPER WITH REAR PARK DISTANCE SENSORS
- * REAR D-RINGS & ISOLATORS (ANTHRACITE)
- * ALL WEATHER FLOOR MATS
- * TAZER JL PROGRAMMER WITH SPEEDOMETER CALIBRATION
- * 20" FUEL "RAMPAGE" 2-PIECE WHEELS
- * BRAND NEW NITTO RIDGE GRAPPLER 37X13.50R/20 TIRES

WE BUILD EVERY JEEP WITH PRIDE! DO NOT HESITATE TO CALL US WITH THIS JEEP BUILD. WE CAN MAKE CHANGES TO THIS JEEP BUILD OR CUSTOM BUILD ANY JEEP TO YOUR PREFERENCE. GIVE US A CALL @ 972-242-5350 OR STOP BY FOR A TEST DRIVE. 1724 LUNA RD IN CARROLLTON - 2 MILES NORTH OF 635.

Vehicle History Report : as Of 09/29/2022



Snapshot

2022 JEEP WRANGLER UNLIMITED RUBICO



No accidents or damage reported to CARFAX



Well maintained vehicle



CARFAX 1-Owner vehicle



Personal vehicle



Last owned in Texas



10 Last reported odometer reading



FREE CARFAX Report

See the full CARFAX Report for additional information

*carfax Snapshot is a reflection of available information on the date the report was pulled. carfax is constantly being updated with new information and is subject to change at any time.

Our Location :



2022 Jeep Wrangler Unlimited Rubicon 392 SKY TOP,DUPONT KEVLAR,BUMPERS

Texas Vehicle Exchange - 972-242-5350 - View this car on our website at veauto.com/7117074/ebrochure

Installed Options

Interior

- 2 12V DC Power Outlets- 2 12V DC Power Outlets and 1 120V AC Power Outlet
- 2 Seatback Storage Pockets
- 4-Way Passenger Seat -inc: Manual Recline and Fore/Aft Movement
- 4G LTE Wi-Fi Hot Spot Mobile Hotspot Internet Access
- 6-Way Driver Seat -inc: Manual Recline, Height Adjustment, Fore/Aft Movement and Manual Lumbar Support
- 60-40 Folding Split-Bench Front Facing Fold Forward Seatback Leather Rear Seat
- Air Filtration- Analog Appearance- Cargo Space Lights
- Carpet Floor Trim, Carpet And Rubber Mat- Compass
- Cruise Control w/Steering Wheel Controls- Day-Night Auto-Dimming Rearview Mirror
- Delayed Accessory Power- Distance Pacing w/Traffic Stop-Go
- Driver And Passenger Heated-Cushion, Driver And Passenger Heated-Seatback
- Driver And Passenger Visor Vanity Mirrors w/Driver And Passenger Illumination
- FOB Controls -inc: Remote Engine Start- Fade-To-Off Interior Lighting
- Front And Rear Map Lights- Front Center Armrest w/Storage and Rear Center Armrest
- Front Seats w/Leatherette Back Material and Manual Driver Lumbar
- Full Carpet Floor Covering -inc: Carpet Front And Rear Floor Mats
- Full Floor Console w/locking Storage, 2 12V DC Power Outlets and 1 120V AC Power

- Full Floor Console w/Locking Storage, 2 12V DC Power Outlets and 1 120V AC Power Outlet
- Garage Door Transmitter
- Gauges -inc: Speedometer, Odometer, Voltmeter, Oil Pressure, Engine Coolant Temp, Tachometer, Inclinator, Altimeter, Oil Temperature, Transmission Fluid Temp, Engine Hour Meter, Trip Odometer and Trip Computer
- HVAC -inc: Console Ducts- Heated Leather Steering Wheel- Illuminated Front Cupholder
- Illuminated Rear Cupholder
- Instrument Panel Bin, Dashboard Storage, Driver / Passenger And Rear Door Bins
- Interior Trim -inc: Metal-Look Instrument Panel Insert, Metal-Look Door Panel Insert, Metal-Look Console Insert and Metal-Look Interior Accents
- Leather Gear Shifter Material- Leather Trimmed Bucket Seats
- Locking Cargo Area Concealed Storage- Locking Glove Box
- Manual Adjustable Front Head Restraints and Foldable Rear Head Restraints
- Manual Tilt/Telescoping Steering Column- Outside Temp Gauge- Perimeter Alarm
- Power 1st Row Windows w/Driver And Passenger 1-Touch Down
- Power Door Locks w/Autolock Feature
- Power Rear Windows and Fixed 3rd Row Windows
- Proximity Key For Doors And Push Button Start - Redundant Digital Speedometer
- Remote Keyless Entry w/Integrated Key Transmitter, Illuminated Entry and Panic Button
- Sentry Key Immobilizer- SiriusXM Guardian Tracker System- Smart Device Integration
- Smart Device Remote Engine Start- Systems Monitor- Trip Computer
- Voice Activated Dual Zone Front Automatic Air Conditioning

Exterior

- Aluminum Spare Wheel
- Auto On/Off Aero-Composite Led Low/High Beam Daytime Running Auto High-Beam Headlamps w/Delay-Off
- Black Door Handles- Black Front Bumper w/2 Tow Hooks
- Black Power Heated Side Mirrors w/Manual Folding- Black Rear Bumper w/1 Tow Hook
- Black Side Windows Trim- Black Wheel Well Trim and Body-Colored Fender Flares
- Body-Color Grille w/Colored Accents- Clearcoat Paint w/Badging
- Conventional Rear Cargo Access- Deep Tinted Glass- Flip-Up Rear Window
- Freedom Panel Storage Bag- Front Fog Lamps
- Full-Size Spare Tire Mounted Outside Rear
- Galvanized Steel/Aluminum/Magnesium Panels- Headlights-Automatic Highbeams
- LED Brakelights
- Manual Convertible Hard Top w/Glass Rear Window and Fixed Roll-Over Protection
- Manual Targa Composite 1st Row Sunroof- Rear Window Defroster
- Rear Window Wiper/Washer- Tailgate/Rear Door Lock Included w/Power Door Locks
- Tires: LT285/70R17C BSW Off-Road- Variable Intermittent Wipers
- Wheels: 17" x 7.5" Beadlock Capable

Safety

- 2 12V DC Power Outlets- 2 12V DC Power Outlets and 1 120V AC Power Outlet
- 2 Seatback Storage Pockets
- 4-Way Passenger Seat -inc: Manual Recline and Fore/Aft Movement
- 4G LTE Wi-Fi Hot Spot Mobile Hotspot Internet Access
- 6-Way Driver Seat -inc: Manual Recline, Height Adjustment, Fore/Aft Movement and Manual Lumbar Support
- 60-40 Folding Split-Bench Front Facing Fold Forward Seatback Leather Rear Seat
- Air Filtration- Analog Appearance- Cargo Space Lights
- Carpet Floor Trim, Carpet And Rubber Mat- Compass
- Cruise Control w/Steering Wheel Controls- Day-Night Auto-Dimming Rearview Mirror
- Delayed Accessory Power- Distance Pacing w/Traffic Stop-Go
- Driver And Passenger Heated-Cushion, Driver And Passenger Heated-Seatback
- Driver And Passenger Visor Vanity Mirrors w/Driver And Passenger Illumination
- FOB Controls -inc: Remote Engine Start- Fade-To-Off Interior Lighting
- Front And Rear Map Lights- Front Center Armrest w/Storage and Rear Center Armrest
- Front Seats w/Leatherette Back Material and Manual Driver Lumbar
- Full Carpet Floor Covering -inc: Carpet Front And Rear Floor Mats
- Full Floor Console w/Locking Storage, 2 12V DC Power Outlets and 1 120V AC Power Outlet
- Garage Door Transmitter
- Gauges -inc: Speedometer, Odometer, Voltmeter, Oil Pressure, Engine Coolant Temp, Tachometer, Inclinator, Altimeter, Oil Temperature, Transmission Fluid Temp, Engine Hour Meter, Trip Odometer and Trip Computer
- HVAC -inc: Console Ducts- Heated Leather Steering Wheel- Illuminated Front Cupholder
- Illuminated Rear Cupholder
- Instrument Panel Bin, Dashboard Storage, Driver / Passenger And Rear Door Bins
- Interior Trim -inc: Metal-Look Instrument Panel Insert, Metal-Look Door Panel Insert, Metal-Look Console Insert and Metal-Look Interior Accents
- Leather Gear Shifter Material- Leather Trimmed Bucket Seats

Leather Gear Shift Knobs - Leather Trimmed Bucket Seats

- Locking Cargo Area Concealed Storage- Locking Glove Box
- Manual Adjustable Front Head Restraints and Foldable Rear Head Restraints
- Manual Tilt/Telescoping Steering Column- Outside Temp Gauge- Perimeter Alarm
- Power 1st Row Windows w/Driver And Passenger 1-Touch Down
- Power Door Locks w/Autolock Feature
- Power Rear Windows and Fixed 3rd Row Windows
- Proximity Key For Doors And Push Button Start - Redundant Digital Speedometer
- Remote Keyless Entry w/Integrated Key Transmitter, Illuminated Entry and Panic Button
- Sentry Key Immobilizer- SiriusXM Guardian Tracker System- Smart Device Integration
- Smart Device Remote Engine Start- Systems Monitor- Trip Computer
- Voice Activated Dual Zone Front Automatic Air Conditioning

Mechanical

- 1351# Maximum Payload- 21.5 Gal. Fuel Tank- 220 Amp Alternator
- 3.73 Rear Axle Ratio
- 4-Wheel Disc Brakes w/4-Wheel ABS, Front And Rear Vented Discs, Brake Assist, Hill Descent Control and Hill Hold Control
- 5 Skid Plates- 700CCA Maintenance-Free Battery w/Run Down Protection
- Auto Locking Hubs- Brake Actuated Limited Slip Differential
- Driver Selectable Front Locking Differential- Driver Selectable Rear Locking Differential
- Dual Stainless Steel Exhaust- Electro-Hydraulic Power Assist Steering- Engine Oil Cooler
- Engine: 6.4L V8 SRT HEMI MDS- Federal Emissions
- Fox Brand Name Shock Absorbers
- Front Active w/Driver Control Anti-Roll Bar and Rear Anti-Roll Bar- GVWR: 6,100 lbs
- Leading Link Front Suspension w/Coil Springs- Manual Transfer Case
- Part And Full-Time Four-Wheel Drive- Rubicon 392 Suspension
- Solid Axle Rear Suspension w/Coil Springs- Towing Equipment -inc: Trailer Sway Control
- Transmission w/Sequential Shift Control w/Steering Wheel Controls
- Transmission: 8-Speed Automatic (8HP75)- Uppfitter Switches

Option Packages

Factory Installed Packages

ENGINE: 6.4L V8 SRT HEMI MDS

TRANSMISSION: 8-SPEED AUTOMATIC (8HP75)

SKY 1-TOUCH POWER TOP

-inc: Removable Rear Quarter Windows, Power Top Quarter Window Storage Bag **\$2,050**

QUICK ORDER PACKAGE 27X

-inc: Engine: 6.4L V8 SRT HEMI MDS, Transmission: 8-Speed Automatic (8HP75)

Option Packages Total **\$2,050**

