

northtexasequipment.com
+1 (682) 402-9972
800 Burlington Rd
Fort Worth, TX 76179

North Texas
Equipment

2010 Ford F-750 75' ALTEC FORESTRY BUCKET TRUCK W/ 11FT BODY

Maria Diaz +1 (682) 402-9972

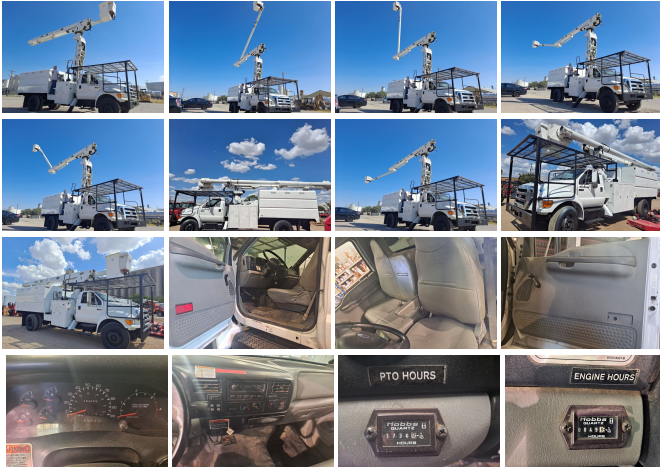
View this car on our website at northtexasequipment.com/7116641/ebrochure



Our Price **\$89,950**

Specifications:

Year: 2010
VIN: 3FRXF7FBXAV253532
Make: Ford
Stock: 253532
Model/Trim: F-750 75' ALTEC FORESTRY BUCKET TRUCK W/ 11FT BODY
Condition: Pre-Owned
Exterior: White
Engine: 6.7L CUMMINS DIESEL ENGINE
Interior: Gray
Mileage: 94,058
Drivetrain: Rear Wheel Drive
Truck Type: Bucket, Boom



2010 FORD F750 75' ALTEC ELEVATOR FORESTRY BUCKET TRUCK

75' ALTEC BOOM

*11FT BODY

2HYD OUTRIGGERS

6.7L CUMMINS DIESEL

AUTOMATIC TRANSMISSION

*3,736 PTO HOURS

94K MILES

#253532

THIS 2010 FORD F750 75' ALTEC ELEVATOR FORESTRY BUCKET TRUCK IS IN VERY GOOD SHAPE INSIDE AND OUT. IT'S ELEVATOR ALTEC BUCKET / BOOM SYSTEM HAS OVER-CENTER CAPABILITY AND IS MOUNTED BEHIND THE CAB FOR, IDEAL FOR TREE TRIMMING APPLICATIONS. THIS TRUCK HAS 2 HYDRAULIC OUTRIGGERS FOR STABILITY AND HAS A 6 YARD DUMP BED FOR DEBRIS AND CHIPPER APPLICATIONS.

FINANCING AVAILABLE!!
 NATION WIDE DELIVERY AVAILABLE!!
 NEED A SHIPPING QUOTE? HAVE ANY QUESTIONS?
 CALL OR TEXT ANYTIME:

MARIA 682-402-9972 (HABLO ESPAÑOL)

TIM 817-819-6319

2010 Ford F-750 75' ALTEC FORESTRY BUCKET TRUCK W/ 11FT BODY

North Texas Equipment - +1 (682) 402-9972 - View this car on our website at northtexasequipment.com/7116641/ebrochure

Our Location :



2010 Ford F-750 75' ALTEC FORESTRY BUCKET TRUCK W/ 11FT BODY

North Texas Equipment - +1 (682) 402-9972 - View this car on our website at northtexasequipment.com/7116641/ebrochure

Installed Options

Interior

- AM/FM stereo-inc: clock, (2) speakers- Aux pwr point
- Black Maslite-type full floor covering- Black two-spoke 17.5" PVC steering wheel
- Cigar lighter & ash tray
- Color-coordinated door trim w/hard arm rest, grab handle & reflector
- Color-coordinated instrument panel- Color-coordinated molded cloth headliner
- Color-coordinated scuff plates- Cruise control- Cup holder- Door activated dome lamp
- Dual cloth covered sunvisors w/passenger mirror
- G-grain vinyl (2) person passenger bench seat w/integral outboard headrest -inc: folding back
- G-grain vinyl 40/70 high-back driver captain chair w/integral headrest-inc: dumping & reclining back, arm rests
- Instrumentation-inc: speedometer, trip meter, volt meter, oil pressure, coolant temp, fuel gauge, tachometer, indicator lights
- Interior A-pillar mounted grab handle
- Manual air conditioning-inc: integral heater & defroster
- Multifunction self canceling turn signal switch- RH & LH color-coordinated coat hooks
- Tilt steering column

Exterior

- (2) tail lights w/integral stop, turn, backup & license plate
- 5-roof marker & clearance lights- Chrome grille-inc: chrome headlight bezels
- Conventional steel Ford cab
- Dual bright head west coast style 7.5" x 16.5" side-view mirrors
- Exterior B-pillar mounted assist handle- Fixed rear window
- Frame mounted tilting hood & front fender assembly w/torsion assist-inc: integral noise, inner splash shields & flash guards
- Full width chrome plated steel front bumper (0.1875" thick)
- Laminated windshield w/solar tint on all windows
- Rectangular halogen sealed beam headlights-inc: front side marker lights w/reflectors

- Two-speed intermittent windshield wipers w/washers

Safety

- AM/FM stereo-inc: clock, (2) speakers- Aux pwr point
- Black Maslite-type full floor covering- Black two-spoke 17.5" PVC steering wheel
- Cigar lighter & ash tray
- Color-coordinated door trim w/hard arm rest, grab handle & reflector
- Color-coordinated instrument panel- Color-coordinated molded cloth headliner
- Color-coordinated scuff plates- Cruise control- Cup holder- Door activated dome lamp
- Dual cloth covered sunvisors w/passenger mirror
- G-grain vinyl (2) person passenger bench seat w/integral outboard headrest -inc: folding back
- G-grain vinyl 40/70 high-back driver captain chair w/integral headrest-inc: dumping & reclining back, arm rests
- Instrumentation-inc: speedometer, trip meter, volt meter, oil pressure, coolant temp, fuel gauge, tachometer, indicator lights
- Interior A-pillar mounted grab handle
- Manual air conditioning-inc: integral heater & defroster
- Multifunction self canceling turn signal switch- RH & LH color-coordinated coat hooks
- Tilt steering column

Mechanical

- 10000lb (I-100SG) I-beam front axle-inc: Ross TAS-66 pwr steering
- 10000lb parabolic taper-leaf front springs-inc: double acting shock absorbers
- 11R22.5H (16PR) AH12 Hankook radial front tires
- 11R22.5H (16PR) DL01 Hankook radial rear tires- 12-volt Delco Remy 29T starting motor
- 12-volt, 130-amp Leece-Neville brush-type pad mounted alternator
- 15.14 sm, 80000 psi straight C channel high strength low alloy steel frame
- 21000lb Spicer 21060S single reduction single-speed rear axle w/190 wheel ends
- 22.5 x 7.5 10-hole hub piloted steel disc front & rear wheels painted white w/(5) hand holes
- 23500lb vari-rate multi-leaf rear springs-inc: 4500lb aux rubber springs
- 6.7L Cummins ISB 200 I6 diesel engine
- 717 sq in cross-flow aluminum radiator w/313 sq in charge air cooler
- Allison 2500RDS wide ratio 5-speed automatic transmission w/OD & 4th generation controls
- Body builder wiring at back of cab at frame
- Borg Warner SA75 viscous screw-on type fan clutch cooler
- DDSA type rear axle mounted 12" x 3" parking brake w/Orscheln control
- Donaldson single element air cleaner-inc: restriction indicator
- Dual 625 CCA 12-volt Motorcraft batteries RH under cab step
- Fleetguard FS19557 fuel & water separator w/electric type heater & primer pump
- Front & rear hydraulic disc brakes w/Quadraulic split system, 4-channel anti-lock brakes
- Front Stemco wheel seals- Gold Eagle cold weather anti-gel diesel fuel additive
- RH frame mounted single horizontal aftertreatment device w/horizontal tail pipe
- Rear Stemco Discover HNBR wheel seals- Rear wheel drive- SAE blade type fuses
- Spicer SPL100 driveshaft

Option Packages

Factory Installed Packages

6.7L CUMMINS ISB 200 I6 DIESEL
ENGINE 220 HP @ 2400 RPM, 520 LB-
FT TORQUE @ 1600 RPM
-inc: 2600 RPM governed speed, \$1,110
220 peak HP (max), Delco-
Remy America Inc. 38MT type
300 starter, Borg Warner SA75
viscous screw fan clutch,
Donaldson air cleaner,
Fleetguard FS19557 fuel &
water separator w/electric
heater & primer pump

Option Packages Total
\$1,110

financing is provided by outside companies. payments rates and down payment is per finance company. With Approved Credit

North Texas Equipment
northtexasequipment.com
+1 (682) 402-9972

800 Burlington Rd
Fort Worth, TX 76179

© 2022 AutoRevo - All rights reserved. - Powered by [AutoRevo](#)