

# 2022 Ford F-150 Tremor

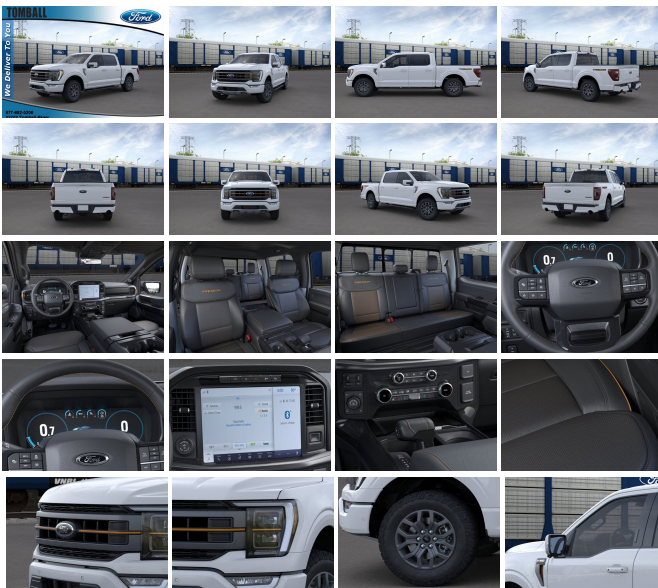
View this car on our website at [askjorgelopez.com/7114749/ebrochure](http://askjorgelopez.com/7114749/ebrochure)



Our Price **\$74,330**

## Specifications:

<b>Year:</b>	2022
<b>VIN:</b>	1FTEW1E87NFC28347
<b>Make:</b>	Ford
<b>Stock:</b>	TFC28347
<b>Model/Trim:</b>	F-150 Tremor
<b>Condition:</b>	New
<b>Body:</b>	Pickup Truck
<b>Exterior:</b>	OXFORD WHITE
<b>Engine:</b>	ENGINE: 3.5L V6 ECOBOOST
<b>Interior:</b>	UNIQUE LEATHER 40/CONSOLE/40 BLACK
<b>Mileage:</b>	0
<b>Drivetrain:</b>	4 Wheel Drive
<b>Economy:</b>	City 16 / Highway 20



Take the worry out of buying with this impeccable 2022 Ford F-150. Tire Specific Low Tire Pressure Warning, Side Impact Beams, Safety Canopy System Curtain 1st And 2nd Row Airbags, Rear Child Safety Locks, Outboard Front Lap And Shoulder Safety Belts -inc: Rear Center 3 Point, Height Adjusters and Pretensioners.\*Fully-Loaded with Additional Options\*TRAILER TOW PACKAGE -inc: Towing capability up to TBD lbs, tailgate LED, Integrated Trailer Brake Controller, BED UTILITY PACKAGE -inc: BoxLink, 4 premium locking cleats, Zone Lighting, LED Box Lighting, Tailgate Step w/Tailgate Work Surface, Power Tailgate, TRAILER TOW PACKAGE -inc: Towing capability up to TBD lbs, tailgate LED, Integrated Trailer Brake Controller, RADIO: B&O UNLEASHED SOUND SYSTEM BY BANG & OLUFSEN -inc: HD Radio and 18 speakers including subwoofer, PARTITIONED LOCKABLE FOLD-FLAT STORAGE, OXFORD WHITE, INTERIOR WORK SURFACE, FRONT-AXLE W/TORSEN DIFFERENTIAL, FRONT LICENSE PLATE BRACKET -inc: Standard in states requiring 2 license plates, optional to all others, FORD CO-PILOT360 ACTIVE 2.0 -inc: forward sensing system, Note: BlueCruise Prep Kit functionality expected 4th quarter 2021CY, Separate payment for feature software required to activate full functionality at that time, BlueCruise, Active Park Assist 2.0.\* Visit Us Today \*A short visit to Tomball Ford located at 22702 Tomball Parkway, Tomball, TX 77375 can get you a dependable F-150 today!

## Our Location :



2022 Ford F-150 Tremor

Ask Jorge Lopez - (866) 773-1396 - View this car on our website at [askjorgelopez.com/7114749/ebrochure](http://askjorgelopez.com/7114749/ebrochure)

## Installed Options

### Interior

- Unique Sport Cloth 40/Console/40 Front Seat -inc: manual driver/passenger lumbar, flow-through console and steering column mounted shift
- 4-Way Driver Seat -inc: Manual Recline and Fore/Aft Movement
- 4-Way Passenger Seat -inc: Manual Recline and Fore/Aft Movement
- 60-40 Folding Split-Bench Front Facing Fold-Up Cushion Rear Seat
- Manual Tilt/Telescoping Steering Column
- Gauges -inc: Speedometer, Odometer, Voltmeter, Oil Pressure, Engine Coolant Temp, Tachometer, Transmission Fluid Temp, Trip Odometer and Trip Computer
- Power Rear Windows- FordPass Connect 4G Mobile Hotspot Internet Access
- Front Cupholder- Rear Cupholder- Compass
- Remote Keyless Entry w/Integrated Key Transmitter, Illuminated Entry and Panic Button
- Cruise Control w/Steering Wheel Controls- Manual Air Conditioning
- HVAC -inc: Underseat Ducts and Console Ducts - Locking Glove Box
- Full Cloth Headliner- Urethane Gear Shifter Material
- Interior Trim -inc: Metal-Look Instrument Panel Insert, Cabback Insulator and Chrome/Metal-Look Interior Accents
- Day-Night Rearview Mirror- Passenger Visor Vanity Mirror
- Mini Overhead Console w/Storage and 1 12V DC Power Outlet
- Fade-To-Off Interior Lighting- Front And Rear Map Lights
- Full Carpet Floor Covering -inc: Carpet Front And Rear Floor Mats
- Pickup Cargo Box Lights- Smart Device Remote Engine Start
- SYNC 4 Connected Navigation Integrated Navigation System w/Voice Activation
- SYNC 4 w/Enhanced Voice Recognition -inc: 12" LCD capacitive touchscreen w/swipe capability, information on demand panel, wireless phone connection, cloud connected, Applink w/App catalog, 911 Assist, Apple CarPlay and Android Auto compatibility, digital owners manual, conversational voice command recognition and connected navigation, Note: Navigation services require SYNC@4 and FordPass Connect (optional on select vehicles), complimentary connect service and the FordPass app (see FordPass Terms for details). Customer receives a complimentary 90-day trial of navigation services when an eligible vehicle is added to a member's FordPass account. Trial period begins on the new vehicle warranty start date. At the end of the complimentary period, navigation service will

terminate, Connected service and features depend on compatible AT&T network availability, Evolving technology/cellular networks/vehicle capability may limit functionality and prevent operation of connected features, FordPass App, compatible w/select smartphone platforms, is available via a download, Message and data rates may apply

- Instrument Panel Bin, Dashboard Storage, Interior Concealed Storage, Driver / Passenger And Rear Door Bins
- Power 1st Row Windows w/Driver And Passenger 1-Touch Up/Down
- Delayed Accessory Power- Power Door Locks w/Autolock Feature- Trip Computer
- Outside Temp Gauge- Analog Appearance
- Lane-Keeping System -inc: lane-keeping alert, lane-keeping aid and driver alert
- Pre-Collision Assist w/Automatic Emergency Braking -inc: pedestrian detection, forward collision warning and dynamic brake support
- Rear View Camera- 2 Seatback Storage Pockets- Seats w/Cloth Back Material
- Manual Adjustable Front Head Restraints and Manual Adjustable Rear Head Restraints
- Front Center Armrest- Securilock Anti-Theft Ignition (pats) Engine Immobilizer
- Perimeter Alarm- 1 12V DC Power Outlet- Air Filtration

---

## Exterior

- Wheels: 18" Alloy w/Dark Matte Finish- Tires: 275/70R18 All-Terrain- Regular Box Style
- Steel Spare Wheel- Full-Size Spare Tire Stored Underbody w/Crankdown
- Clearcoat Paint w/Decal
- Body-Colored Front Bumper w/Body-Colored Rub Strip/Fascia Accent and 2 Tow Hooks
- Body-Colored Rear Step Bumper w/2 Tow Hooks- Black Side Windows Trim
- Black Door Handles- Black Power Heated Side Mirrors w/Manual Folding
- Fixed Rear Window w/Defroster- Variable Intermittent Wipers- Deep Tinted Glass
- Aluminum Panels- Black Grille- Running Boards- Tailgate Rear Cargo Access
- Tailgate/Rear Door Lock Included w/Power Door Locks
- Ford Co-Pilot360 - Autolamp Auto On/Off Aero-Composite Halogen Daytime Running Lights Preference Setting Headlamps w/Delay-Off
- Cargo Lamp w/High Mount Stop Light- Front Fog Lamps- Perimeter/Approach Lights
- Auto High Beam

---

## Safety

- Unique Sport Cloth 40/Console/40 Front Seat -inc: manual driver/passenger lumbar, flow-through console and steering column mounted shift
- 4-Way Driver Seat -inc: Manual Recline and Fore/Aft Movement
- 4-Way Passenger Seat -inc: Manual Recline and Fore/Aft Movement
- 60-40 Folding Split-Bench Front Facing Fold-Up Cushion Rear Seat
- Manual Tilt/Telescoping Steering Column
- Gauges -inc: Speedometer, Odometer, Voltmeter, Oil Pressure, Engine Coolant Temp, Tachometer, Transmission Fluid Temp, Trip Odometer and Trip Computer
- Power Rear Windows- FordPass Connect 4G Mobile Hotspot Internet Access
- Front Cupholder- Rear Cupholder- Compass
- Remote Keyless Entry w/Integrated Key Transmitter, Illuminated Entry and Panic Button
- Cruise Control w/Steering Wheel Controls- Manual Air Conditioning
- HVAC -inc: Underseat Ducts and Console Ducts - Locking Glove Box
- Full Cloth Headliner- Urethane Gear Shifter Material
- Interior Trim -inc: Metal-Look Instrument Panel Insert, Cabback Insulator and Chrome/Metal-Look Interior Accents
- Day-Night Rearview Mirror- Passenger Visor Vanity Mirror
- Mini Overhead Console w/Storage and 1 12V DC Power Outlet
- Fade-To-Off Interior Lighting- Front And Rear Map Lights
- Full Carpet Floor Covering -inc: Carpet Front And Rear Floor Mats
- Pickup Cargo Box Lights- Smart Device Remote Engine Start
- SYNC 4 Connected Navigation Integrated Navigation System w/Voice Activation
- SYNC 4 w/Enhanced Voice Recognition -inc: 12" LCD capacitive touchscreen w/swipe capability, information on demand panel, wireless phone connection, cloud connected, AppLink w/App catalog, 911 Assist, Apple CarPlay and Android Auto compatibility, digital owners manual, conversational voice command recognition and connected navigation, Note: Navigation services require SYNC@4 and FordPass Connect (optional on select vehicles), complimentary connect service and the FordPass app (see FordPass Terms for details), Customer receives a complimentary 90-day trial of navigation services when an eligible vehicle is added to a member's FordPass account, Trial period begins on the new vehicle warranty start date, At the end of the complimentary period, navigation service will terminate, Connected service and features depend on compatible AT&T network availability, Evolving technology/cellular networks/vehicle capability may limit functionality and prevent operation of connected features, FordPass App, compatible w/select smartphone platforms, is available via a download, Message and data rates may apply
- Instrument Panel Bin, Dashboard Storage, Interior Concealed Storage, Driver / Passenger And Rear Door Bins
- Power 1st Row Windows w/Driver And Passenger 1-Touch Up/Down
- Delayed Accessory Power- Power Door Locks w/Autolock Feature- Trip Computer
- Outside Temp Gauge- Analog Appearance
- Lane-Keeping System -inc: lane-keeping alert, lane-keeping aid and driver alert
- Pre-Collision Assist w/Automatic Emergency Braking -inc: pedestrian detection, forward collision warning and dynamic brake support

comfort, warning and dynamic brake support.

- Rear View Camera- 2 Seatback Storage Pockets- Seats w/Cloth Back Material
- Manual Adjustable Front Head Restraints and Manual Adjustable Rear Head Restraints
- Front Center Armrest- Securilock Anti-Theft Ignition (pats) Engine Immobilizer
- Perimeter Alarm- 1 12V DC Power Outlet- Air Filtration

## Mechanical

- Engine: 3.5L V6 EcoBoost -inc: auto start-stop technology
- Transmission: Electronic 10-Speed Automatic -inc: selectable drive modes: normal, ECO, sport, tow/haul, slippery, deep snow/sand and mud/rut
- Electronic Locking w/3.73 Axle Ratio- GVWR: 7,050 lbs Payload Package
- Electronic Transfer Case- Part-Time Four-Wheel Drive
- Driver Selectable Rear Locking Differential
- 70-Amp/Hr 610CCA Maintenance-Free Battery w/Run Down Protection
- 200 Amp Alternator- Towing Equipment -inc: Trailer Sway Control
- Class IV Trailer Hitch Receiver -inc: towing capability up to TBD lbs, on 3.5L EcoBoost engine (998), 7/4-pin connector, class IV trailer hitch receiver, smart trailer tow connector (BLIS w/trailer tow coverage where BLIS is available) Ordering the Trailer Tow Package does not include Integrated Brake Controller (67T). Integrated Brake Controller (67T) is a standalone option and must be ordered separately.
- 3 Skid Plates- 1885# Maximum Payload- HD Shock Absorbers- Front Anti-Roll Bar
- Electric Power-Assist Speed-Sensing Steering- 26 Gal. Fuel Tank
- Dual Stainless Steel Exhaust w/Black Tailpipe Finisher- Auto Locking Hubs
- Double Wishbone Front Suspension w/Coil Springs
- Leaf Rear Suspension w/Leaf Springs
- 4-Wheel Disc Brakes w/4-Wheel ABS, Front And Rear Vented Discs, Brake Assist, Hill Descent Control, Hill Hold Control and Electric Parking Brake

## Option Packages

### Factory Installed Packages

-  
ENGINE: 3.5L V6 ECOBOOST  
-inc: auto start-stop technology

Ask Jorge Lopez

[askjorgelopez.com](http://askjorgelopez.com)

(866) 773-1396

22702 Tomball Parkway

Tomball, TX 77375

© 2022 AutoRevo - All rights reserved. - Powered by AutoRevo