

# 2005 Mercedes-Benz E320 3.2L

View this car on our website at [paniaguaautos.com/7114041/ebrochure](http://paniaguaautos.com/7114041/ebrochure)

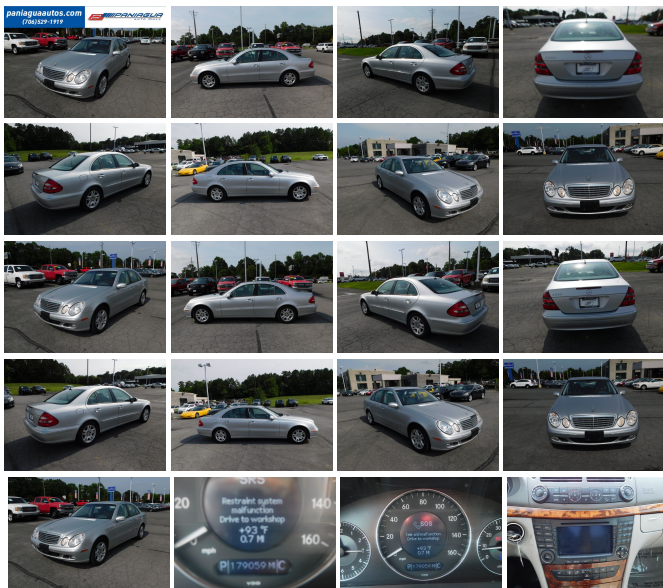


Our Price **\$2,995**

## Specifications:

**Year:** 2005  
**VIN:** **WDBUF65J15A659791**  
**Make:** Mercedes-Benz  
**Stock:** 8838  
**Model/Trim:** E320 3.2L  
**Condition:** Pre-Owned  
**Body:** Sedan  
**Exterior:** Silver  
**Engine:** 3.2L (195) SOHC SMPI 18-valve aluminum-alloy V6 engine  
**Interior:** Gray Leather  
**Transmission:** AUTOMATIC  
**Mileage:** 179,059  
**Drivetrain:** Rear Wheel Drive  
**Economy:** City 20 / Highway 28

2005 MERCEDES-BENZ E320 3.2L V6 AUTOMATIC LEATHER  
INTERIOR ALL POWER COLD AC STOP BY TODAY AND CHECK  
OUT OUR MOST RECENT INVENTORY



2005 Mercedes-Benz E320 3.2L

Paniagua Auto Mall - 706-529-1919 & 423-472-4045 - View this car on our website at [paniaguaautos.com/7114041/ebrochure](http://paniaguaautos.com/7114041/ebrochure)

## Our Location :



2005 Mercedes-Benz E320 3.2L

Paniagua Auto Mall - 706-529-1919& 423-472-4045 - View this car on our website at [paniaguaautos.com/7114041/ebrochure](http://paniaguaautos.com/7114041/ebrochure)

## Installed Options

### Interior

- (4) reading lamps
- AM/FM/weatherband stereo w/CD player-inc: 9-speakers, 4-channel amplifier, automatic speed-sensitive volume adjustment, fiber-optic communication among components
- Auto-dimming rearview mirror- Cruise control- Front/rear courtesy lights w/delay shutoff
- Hand-polished burl walnut wood trim-inc: dash, console, doors
- Leather-trimmed steering wheel w/audio/multifunction display controls
- M-B Tex upholstery w/leather front seating inserts
- Multifunction display in speedometer face-inc: trip computer, exterior temp gauge, oil level check, digital speedometer, radio/CD player status, reminder/malfunction messages, driver-programmable settings, cruise control
- Pwr door locks w/drive away locking
- SmartKey infrared-remote-inc: opening trunk, opening/closing windows, panic alarm, fuel filler door, lock/unlock all doors or drivers
- SmartKey system-inc: remote central locking system, anti-theft engine immobilizer, driver-programmable user-recognition features, drive away automatic locking
- Velour floor carpeting/mats
- 10-way pwr front seats w/3-position memory, drivers adjustable lumbar support
- 4-way pwr tilt/telescoping steering column w/memory, programmable easy-entry/ exit feature
- Anti-theft alarm system w/towaway protection
- Audible reminders & message-inc: open door, exterior lamp failure, headlamps on, parking brake on, low fuel/oil/coolant/washer fluid, remove ignition key
- Automatic dual-zone climate control-inc: dust/pollen filters, humidity/ dewpoint sensor, rear air vents, tunnel mode w/one touch closing of all windows
- Automatic environmental comfort lighting-inc: center console, door handles, all footwells, front/rear seating areas
- COMAND cockpit management/data system-inc: large color-LCD screen, (10) soft key, controls AM/FM/weatherband radio & CD-player
- Carpeted illuminated trunk w/tie-down hooks
- Center console-inc: enclosed storage, dual front cupholders
- Driver & front passenger seatbacks pockets - Dual visors w/illuminated vanity mirrors

- Electrically heated rear window w/auto shut off based on time/exterior temp
- Entrance lamps in all doors- Folding rear armrest w/enclosed storage, dual cup holders
- Front footwell parcel net- Illuminated glovebox
- Instrumentation-inc: fuel/coolant temp electronic bar-graph, digital touch shift/mode selection display, quartz clock
- Leather/burl walnut wood shift knob- Mercedes-Benz Maintenance System Plus display
- Night security illumination- Pockets in all doors- Pop-open drawer in-dash
- Pwr windows w/express down/up- Stainless-steel door sill trim
- Storage pocket w/motorized wood-trimmed door
- Tele Aid GPS stolen vehicle recovery system w/remote door unlock, automatic alarm notification alert
- Universal garage door opener

---

## Exterior

- Auto-dimming driver mirror- Programmable daytime running lamps
- Atlas grey grille w/four chrome ribs, chrome surround
- Dual aero-blade infrared rain-sensing windshield wipers w/heated windshield washer system
- Dual heated pwr mirrors-inc: RH mirror reverse tilt down, memory, integrated turn signals
- Front halogen foglamps- Single red rear foglamp
- Touch turn signals (flashes three times w/one touch)
- Variable-focus halogen headlamps-inc: polycarbonate lenses, light-sensing auto-on headlamps, automatic lamp substitution

---

## Safety

- (4) reading lamps
- AM/FM/weatherband stereo w/CD player-inc: 9-speakers, 4-channel amplifier, automatic speed-sensitive volume adjustment, fiber-optic communication among components
- Auto-dimming rearview mirror- Cruise control- Front/rear courtesy lights w/delay shutoff
- Hand-polished burl walnut wood trim-inc: dash, console, doors
- Leather-trimmed steering wheel w/audio/multifunction display controls
- M-B Tex upholstery w/leather front seating inserts
- Multifunction display in speedometer face-inc: trip computer, exterior temp gauge, oil level check, digital speedometer, radio/CD player status, reminder/malfunction messages, driver-programmable settings, cruise control
- Pwr door locks w/drive away locking
- SmartKey infrared-remote-inc: opening trunk, opening/closing windows, panic alarm, fuel filler door, lock/unlock all doors or drivers
- SmartKey system-inc: remote central locking system, anti-theft engine immobilizer, driver-programmable user-recognition features, drive away automatic locking
- Velour floor carpeting/mats
- 10-way pwr front seats w/3-position memory, drivers adjustable lumbar support
- 4-way pwr tilt/telescoping steering column w/memory, programmable easy-entry/ exit feature
- Anti-theft alarm system w/towaway protection
- Audible reminders & message-inc: open door, exterior lamp failure, headlamps on, parking brake on, low fuel/oil/coolant/washer fluid, remove ignition key
- Automatic dual-zone climate control-inc: dust/pollen filters, humidity/ dewpoint sensor, rear air vents, tunnel mode w/one touch closing of all windows
- Automatic environmental comfort lighting-inc: center console, door handles, all footwells, front/rear seating areas
- COMAND cockpit management/data system-inc: large color-LCD screen, (10) soft key, controls AM/FM/weatherband radio & CD-player
- Carpeted illuminated trunk w/tie-down hooks
- Center console-inc: enclosed storage, dual front cupholders
- Driver & front passenger seatbacks pockets - Dual visors w/illuminated vanity mirrors
- Electrically heated rear window w/auto shut off based on time/exterior temp
- Entrance lamps in all doors- Folding rear armrest w/enclosed storage, dual cup holders
- Front footwell parcel net- Illuminated glovebox
- Instrumentation-inc: fuel/coolant temp electronic bar-graph, digital touch shift/mode selection display, quartz clock
- Leather/burl walnut wood shift knob- Mercedes-Benz Maintenance System Plus display
- Night security illumination- Pockets in all doors- Pop-open drawer in-dash
- Pwr windows w/express down/up- Stainless-steel door sill trim
- Storage pocket w/motorized wood-trimmed door
- Tele Aid GPS stolen vehicle recovery system w/remote door unlock, automatic alarm notification alert
- Universal garage door opener

---

## Mechanical

- 16" x 8" dual-spoke aluminum wheels - 225/55HR16 performance tires
- Anti-lock brake system (ABS)- Brake assist system- Electronic Stability Program (ESP)
- 21.1 gallon fuel tank- 3.2L (195) SOHC SMPI 18-valve aluminum-alloy V6 engine
- 4-wheel pwr disc brakes (front vented)

- 5-speed automatic drive-adaptive transmission-inc: Touch Shift, optimum gear programming, comfort mode
- Dual path resonance intake manifold
- Front/rear stabilizer bar, gas-pressurized shock absorbers, coil springs
- Independent 4-link front suspension w/anti-dive geometry
- Independent 5-arm multilink rear suspension-inc: anti-squat geometry, alignment control
- Rear wheel drive
- Sensotronic brake control-inc: soft stop, automatic brake drying, predictive brake priming
- Speed sensitive pwr rack & pinion steering

We sale used vehicles as is no warranty. We sale extended warranties ask one of our sales rep. for details.

---

Paniagua Auto Mall

[paniaguaautos.com](http://paniaguaautos.com)

706-529-1919 & 423-472-4045

1776 E. Walnut Ave

Dalton, Georgia 30721

© 2024 AutoRevo - All rights reserved. - Powered by [AutoRevo](#)