

2015 Lexus CT 200h Hybrid

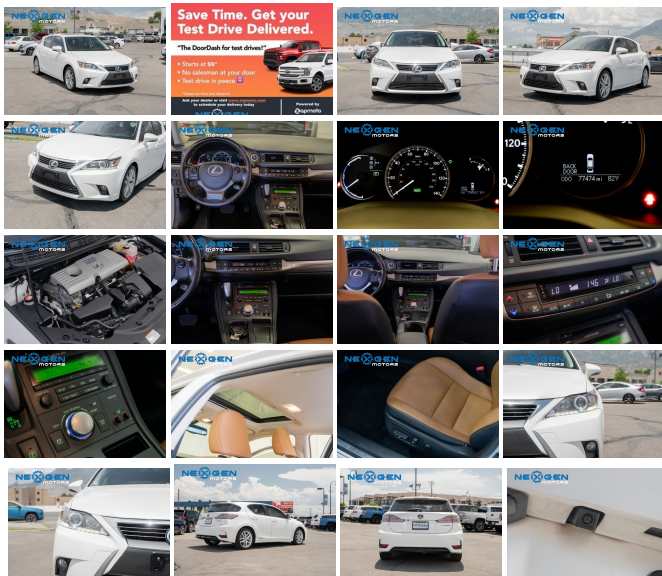
View this car on our website at nexgenmotorsutah.com/7112786/ebrochure



Our Price **\$19,000**

Specifications:

Year:	2015
VIN:	JTHKD5BH5F2244638
Make:	Lexus
Stock:	B4638P
Model/Trim:	CT 200h Hybrid
Condition:	Pre-Owned
Body:	Sedan
Exterior:	White
Engine:	Engine: 1.8L 4-Cylinder DOHC 16V VVT-i
Interior:	Black
Mileage:	78,982
Drivetrain:	Front Wheel Drive
Economy:	City 43 / Highway 40



2015 Lexus CT 200h Hybrid

Nexgen Motors - 801-874-3747 - View this car on our website at nexgenmotorsutah.com/7112786/ebrochure

Our Location :



2015 Lexus CT 200h Hybrid

Nexgen Motors - 801-874-3747 - View this car on our website at nexgenmotorsutah.com/7112786/ebrochure

Installed Options

Interior

- Front Bucket Seats -inc: 10-way power driver's seat (fore-aft slide, fore-aft recline, front vertical height, rear vertical height and power lumbar support), 5 separate, manually adjustable (up/down) headrests and 4-way manual front passenger's seat (fore-aft slide and fore-aft recline)
- Driver Seat- Passenger Seat
- 60-40 Folding Bench Front Facing Fold Forward Seatback Rear Seat
- Manual Tilt/Telescoping Steering Column
- Gauges -inc: Speedometer, Odometer, Tachometer, Traction Battery Level, Power/Regen, Trip Odometer and Trip Computer
- Power Rear Windows- Leather/Metal-Look Steering Wheel- Front Cupholder
- Proximity Key For Doors And Push Button Start - Valet Function
- Remote Keyless Entry w/Integrated Key Transmitter, 2 Door Curb/Courtesy, Illuminated Entry and Panic Button
- Remote Releases -Inc: Power Cargo Access and Power Fuel
- Cruise Control w/Steering Wheel Controls- Dual Zone Front Automatic Air Conditioning
- HVAC -inc: Underseat Ducts- Illuminated Locking Glove Box- Driver Foot Rest
- NuLuxe Seat Material
- Interior Trim -inc: Metal-Look Instrument Panel Insert, Metal-Look Door Panel Insert and Metal-Look Interior Accents
- Full Cloth Headliner- Leatherette Door Trim Insert
- Leather/Metal-Look Gear Shifter Material- Day-Night Rearview Mirror
- Driver And Passenger Visor Vanity Mirrors w/Driver And Passenger Illumination
- Full Floor Console w/Covered Storage, Mini Overhead Console w/Storage and 1 12V DC Power Outlet
- Front Map Lights- Fade-To-Off Interior Lighting
- Full Carpet Floor Covering -inc: Carpet Front And Rear Floor Mats- Carpet Floor Trim
- Cargo Area Concealed Storage- Roll-Up Cargo Cover- Cargo Space Lights
- FOB Controls -inc: Windows- Tracker System
- Instrument Panel Bin, Covered Dashboard Storage, Driver And Passenger Door Bins
- Power 1st Row Windows w/Front And Rear 1-Touch Up/Down - Delayed Accessory Power

- Power Door Locks w/Autolock Feature- Systems Monitor- Trip Computer
- Outside Temp Gauge- Analog Appearance- Seats w/Leatherette Back Material
- Front Center Armrest- 2 Seatback Storage Pockets- Perimeter Alarm
- Engine Immobilizer- 1 12V DC Power Outlet- Air Filtration

Exterior

- Wheels: 17 x 7.0 Split 5-Spoke Aluminum - Tires: P215/45R17 AS V-Rated
- Wheels w/Silver Accents- Steel Spare Wheel
- Compact Spare Tire Mounted Inside Under Cargo- Clearcoat Paint
- Express Open/Close Sliding And Tilting Glass 1st Row Sunroof w/Sunshade
- Body-Colored Front Bumper- Body-Colored Rear Bumper
- Metal-Look Side Windows Trim and Black Front Windshield Trim
- Body-Colored Door Handles
- Body-Colored Power Heated Side Mirrors w/Manual Folding and Turn Signal Indicator
- Fixed Rear Window w/Fixed Interval Wiper and Defroster- Light Tinted Glass
- Variable Intermittent Wipers- Galvanized Steel/Aluminum Panels- Lip Spoiler
- Black Grille w/Metal-Look Surround- Front License Plate Bracket
- Liftgate Rear Cargo Access- Tailgate/Rear Door Lock Included w/Power Door Locks
- Programmable Projector Beam Halogen Daytime Running Headlamps w/Delay-Off
- Front Fog Lamps- Perimeter/Approach Lights- LED Brakelights

Safety

- Front Bucket Seats -inc: 10-way power driver's seat (fore-aft slide, fore-aft recline, front vertical height, rear vertical height and power lumbar support), 5 separate, manually adjustable (up/down) headrests and 4-way manual front passenger's seat (fore-aft slide and fore-aft recline)
- Driver Seat- Passenger Seat
- 60-40 Folding Bench Front Facing Fold Forward Seatback Rear Seat
- Manual Tilt/Telescoping Steering Column
- Gauges -inc: Speedometer, Odometer, Tachometer, Traction Battery Level, Power/Regen, Trip Odometer and Trip Computer
- Power Rear Windows- Leather/Metal-Look Steering Wheel- Front Cupholder
- Proximity Key For Doors And Push Button Start - Valet Function
- Remote Keyless Entry w/Integrated Key Transmitter, 2 Door Curb/Courtesy, Illuminated Entry and Panic Button
- Remote Releases -Inc: Power Cargo Access and Power Fuel
- Cruise Control w/Steering Wheel Controls- Dual Zone Front Automatic Air Conditioning
- HVAC -inc: Underseat Ducts- Illuminated Locking Glove Box- Driver Foot Rest
- NuLuxe Seat Material
- Interior Trim -inc: Metal-Look Instrument Panel Insert, Metal-Look Door Panel Insert and Metal-Look Interior Accents
- Full Cloth Headliner- Leatherette Door Trim Insert
- Leather/Metal-Look Gear Shifter Material- Day-Night Rearview Mirror
- Driver And Passenger Visor Vanity Mirrors w/Driver And Passenger Illumination
- Full Floor Console w/Covered Storage, Mini Overhead Console w/Storage and 1 12V DC Power Outlet
- Front Map Lights- Fade-To-Off Interior Lighting
- Full Carpet Floor Covering -inc: Carpet Front And Rear Floor Mats - Carpet Floor Trim
- Cargo Area Concealed Storage- Roll-Up Cargo Cover- Cargo Space Lights
- FOB Controls -inc: Windows- Tracker System
- Instrument Panel Bin, Covered Dashboard Storage, Driver And Passenger Door Bins
- Power 1st Row Windows w/Front And Rear 1-Touch Up/Down - Delayed Accessory Power
- Power Door Locks w/Autolock Feature- Systems Monitor- Trip Computer
- Outside Temp Gauge- Analog Appearance- Seats w/Leatherette Back Material
- Front Center Armrest- 2 Seatback Storage Pockets- Perimeter Alarm
- Engine Immobilizer- 1 12V DC Power Outlet- Air Filtration

Mechanical

- Engine: 1.8L 4-Cylinder DOHC 16V VVT-i- Transmission: Continuously Variable (ECVT)
- Engine Auto Stop-Start Feature- Transmission w/Driver Selectable Mode
- Front-Wheel Drive- 3.27 Axle Ratio- Battery w/Run Down Protection
- Hybrid Electric Motor- Gas-Pressurized Shock Absorbers- Front And Rear Anti-Roll Bars
- Electric Power-Assist Speed-Sensing Steering- 11.9 Gal. Fuel Tank
- Single Stainless Steel Exhaust- Strut Front Suspension w/Coil Springs
- Double Wishbone Rear Suspension w/Coil Springs
- Regenerative 4-Wheel Disc Brakes w/4-Wheel ABS, Front Vented Discs, Brake Assist and Hill Hold Control
- Nickel Metal Hydride Traction Battery 1.31 kWh Capacity

Nexgen Motors

nexgenmotorsutah.com

801-874-3747

986 N State St.

Orem, UT 84057

© 2022 AutoRevo - All rights reserved. - Powered by [AutoRevo](#)