



## 2016 Mercedes-Benz CLA 250

**Sale Price \$28,995**

**Was ~~\$29,999~~**

View this vehicle on our website at [coxautosalesnw.com](http://coxautosalesnw.com)

Cox Auto Sales NW

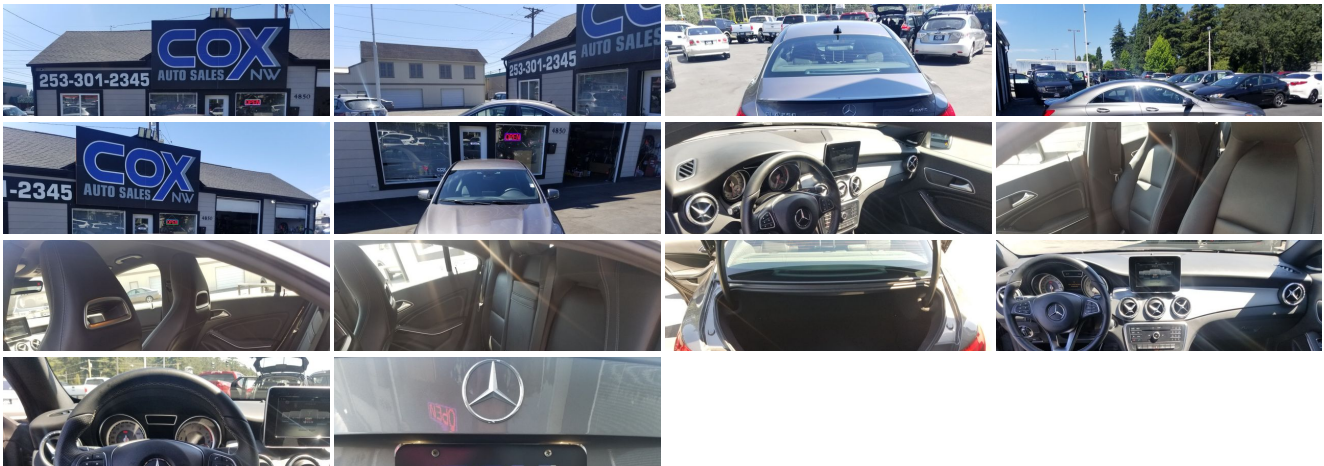
[\(253\) 301-2345](tel:2533012345)

4850 S Tacoma Way , Tacoma, WA 98409

Photos

Details

Contact



## Specifications:

<b>Year:</b>	2016
<b>VIN:</b>	<a href="#">WDDSJ4GB9GN395495</a>
<b>Make:</b>	Mercedes-Benz
<b>Stock:</b>	25944
<b>Model/Trim:</b>	CLA 250
<b>Condition:</b>	Pre-Owned
<b>Body:</b>	Sedan
<b>Exterior:</b>	Gray
<b>Engine:</b>	Engine: 2.0L I-4 Turbo
<b>Interior:</b>	Black
<b>Mileage:</b>	16,364
<b>Drivetrain:</b>	All Wheel Drive
<b>Economy:</b>	City 24 / Highway 33

## Vehicle Description

Cox Auto Sales NW offers only the very best used cars, trucks and SUV's in the Tacoma, WA area. Give us a call at: 253-301-2345 or stop by and visit us at 4850 S Tacoma Way, Tacoma, WA 98409.

### Installed Options

#### Interior

- 14-Way Power Driver Seat -inc: Power Recline, Height Adjustment, Cushion Extension, Fore/Aft Movement, Cushion Tilt and Power 4-Way Lumbar Support
- 60-40 Folding Bench Front Facing Fold Forward Seatback Rear Seat
- FOB Controls -inc: Cargo Access and Windows
- Front Center Armrest and Rear Center Armrest w/Pass-Thru
- Gauges -inc: Speedometer, Odometer, Engine Coolant Temp, Tachometer, Trip Odometer and Trip Computer
- Leather/Metal-Look Steering Wheel- MB-Tex Upholstery
- Memory Settings -inc: Driver Seat and Door Mirrors
- Power 1st Row Windows w/Front And Rear 1-Touch Up/Down
- Power Door Locks w/Autolock Feature- Power Rear Windows
- Proximity Key For Push Button Start Only
- Remote Keyless Entry w/Integrated Key Transmitter, 4 Door Curb/Courtesy, Illuminated Entry and Panic Button
- Selective Service Internet Access- Smart Device Integration
- Sport Bucket Front Seats w/Power 4-Way Driver Lumbar - Trip Computer
- 2 Seatback Storage Pockets- 3 12V DC Power Outlets
- 8-Way Passenger Seat -inc: Manual Recline, Height Adjustment, Fore/Aft Movement and Cushion Tilt
- Air Filtration- Analog Appearance- Cargo Area Concealed Storage
- Cargo Space Lights- Carpet Floor Trim and Carpet Trunk Lid/Rear Cargo Door Trim
- Cruise Control- Day-Night Rearview Mirror- Delayed Accessory Power
- Driver / Passenger And Rear Door Bins and 1st Row Underseat Storage
- Driver And Passenger Visor Vanity Mirrors w/Driver And Passenger Illumination
- Driver Foot Rest- Dual Zone Front Automatic Air Conditioning- Engine Immobilizer
- Fade-To-Off Interior Lighting
- Fixed Front Head Restraints and Fixed Rear Head Restraints
- Front And Rear Map Lights- Front Bucket Seats- Front Cupholder
- Full Carpet Floor Covering -inc: Carpet Front And Rear Floor Mats - Full Cloth Headliner
- Full Floor Console w/Covered Storage, Mini Overhead Console w/Storage and 3 12V DC Power Outlets
- HVAC -inc: Underseat Ducts and Console Ducts - Illuminated Glove Box
- Interior Trim -inc: Metal-Look Interior Accents - Leatherette Door Trim Insert
- Manual Tilt/Telescoping Steering Column- Outside Temp Gauge- Perimeter Alarm
- Power Fuel Flap Locking Type- Rear Cupholder- Redundant Digital Speedometer
- Remote Releases -Inc: Power Cargo Access- Systems Monitor- Tracker System
- Urethane Gear Shifter Material

#### Exterior

- Auto On/Off Aero-Composite Halogen Daytime Running Headlamps w/Delay-Off
- Body-Colored Power Heated Side Mirrors w/Manual Folding and Turn Signal Indicator
- Tires: P225/45HR17- Wheels: 17" 5-Spoke Alloy- Body-Colored Door Handles
- Body-Colored Front Bumper- Body-Colored Rear Bumper
- Chrome Side Windows Trim and Black Front Windshield Trim - Clearcoat Paint
- Fixed Rear Window w/Defroster- Fully Galvanized Steel Panels- Grille w/Chrome Bar
- LED Brakelights- Light Tinted Glass- Perimeter/Approach Lights
- Rain Detecting Variable Intermittent Wipers w/Heated Jets - Rear Fog Lamps
- Trunk Rear Cargo Access

## Safety

- 14-Way Power Driver Seat -inc: Power Recline, Height Adjustment, Cushion Extension, Fore/Aft Movement, Cushion Tilt and Power 4-Way Lumbar Support
- 60-40 Folding Bench Front Facing Fold Forward Seatback Rear Seat
- FOB Controls -inc: Cargo Access and Windows
- Front Center Armrest and Rear Center Armrest w/Pass-Thru
- Gauges -inc: Speedometer, Odometer, Engine Coolant Temp, Tachometer, Trip Odometer and Trip Computer
- Leather/Metal-Look Steering Wheel- MB-Tex Upholstery
- Memory Settings -inc: Driver Seat and Door Mirrors
- Power 1st Row Windows w/Front And Rear 1-Touch Up/Down
- Power Door Locks w/Autolock Feature- Power Rear Windows
- Proximity Key For Push Button Start Only
- Remote Keyless Entry w/Integrated Key Transmitter, 4 Door Curb/Courtesy, Illuminated Entry and Panic Button
- Selective Service Internet Access- Smart Device Integration
- Sport Bucket Front Seats w/Power 4-Way Driver Lumbar - Trip Computer
- 2 Seatback Storage Pockets- 3 12V DC Power Outlets
- 8-Way Passenger Seat -inc: Manual Recline, Height Adjustment, Fore/Aft Movement and Cushion Tilt
- Air Filtration- Analog Appearance- Cargo Area Concealed Storage
- Cargo Space Lights- Carpet Floor Trim and Carpet Trunk Lid/Rear Cargo Door Trim
- Cruise Control- Day-Night Rearview Mirror- Delayed Accessory Power
- Driver / Passenger And Rear Door Bins and 1st Row Underseat Storage
- Driver And Passenger Visor Vanity Mirrors w/Driver And Passenger Illumination
- Driver Foot Rest- Dual Zone Front Automatic Air Conditioning- Engine Immobilizer
- Fade-To-Off Interior Lighting
- Fixed Front Head Restraints and Fixed Rear Head Restraints
- Front And Rear Map Lights- Front Bucket Seats- Front Cupholder
- Full Carpet Floor Covering -inc: Carpet Front And Rear Floor Mats - Full Cloth Headliner
- Full Floor Console w/Covered Storage, Mini Overhead Console w/Storage and 3 12V DC Power Outlets
- HVAC -inc: Underseat Ducts and Console Ducts - Illuminated Glove Box
- Interior Trim -inc: Metal-Look Interior Accents - Leatherette Door Trim Insert
- Manual Tilt/Telescoping Steering Column- Outside Temp Gauge- Perimeter Alarm
- Power Fuel Flap Locking Type- Rear Cupholder- Redundant Digital Speedometer
- Remote Releases -Inc: Power Cargo Access- Systems Monitor- Tracker System
- Urethane Gear Shifter Material

## Mechanical

- 7-Speed Double Clutch Transmission
- Transmission w/Driver Selectable Mode and Sequential Shift Control w/Steering Wheel Controls
- 115 Amp Alternator- 14.8 Gal. Fuel Tank
- 4-Wheel Disc Brakes w/4-Wheel ABS, Front Vented Discs, Brake Assist, Hill Hold Control and Electric Parking Brake
- 4.13 Axle Ratio- 62-Amp/Hr Maintenance-Free Battery
- Electric Power-Assist Speed-Sensing Steering- Engine Auto Stop-Start Feature
- Engine: 2.0L I-4 Turbo- Front And Rear Anti-Roll Bars- Full-Time All-Wheel
- Gas-Pressurized Shock Absorbers- Multi-Link Rear Suspension w/Coil Springs
- Quasi-Dual Stainless Steel Exhaust w/Polished Tailpipe Finisher
- Strut Front Suspension w/Coil Springs

Rate based on OAC. Financing available for all credit tiers.

Cox Auto Sales NW

Cox Auto Sales NW

View this car on our website at [coxautosalesnw.com/7112439](http://coxautosalesnw.com/7112439)

Website: [coxautosalesnw.com](http://coxautosalesnw.com)

Phone: (253) 301-2345

Map: 4850 S Tacoma Way, Tacoma, WA 98409

