

2021 Ford Ranger LARIAT

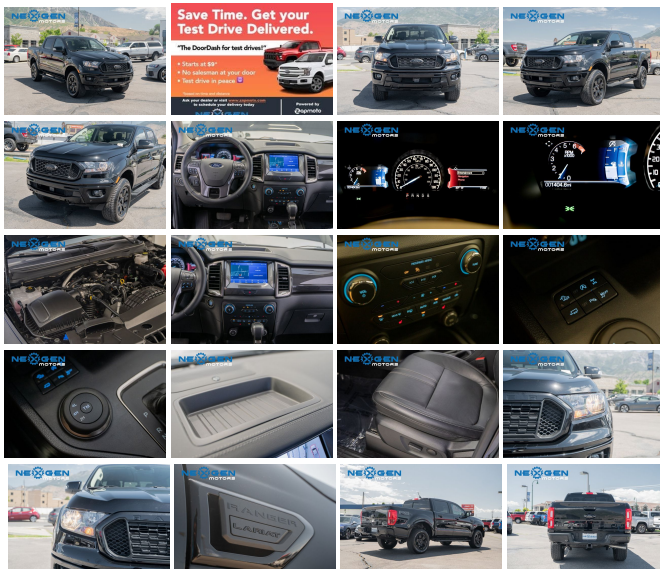
View this car on our website at nexgenmotorsutah.com/7111451/ebrochure



Our Price **\$36,000**

Specifications:

Year:	2021
VIN:	1FTER4FH7MLD92026
Make:	Ford
Stock:	D92026
Model/Trim:	Ranger LARIAT
Condition:	Pre-Owned
Body:	Pickup Truck
Exterior:	Shadow Black
Engine:	ENGINE: 2.3L ECOBOOST
Interior:	Ebony Leather
Mileage:	1,386
Drivetrain:	4 Wheel Drive
Economy:	City 19 / Highway 19



2021 Ford Ranger LARIAT

Nexgen Motors - 801-874-3747 - View this car on our website at nexgenmotorsutah.com/7111451/ebrochure

Our Location :



2021 Ford Ranger LARIAT

Nexgen Motors - 801-874-3747 - View this car on our website at nexgenmotorsutah.com/7111451/ebrochure

Installed Options

Interior

- Driver Seat- Passenger Seat
- Full Folding Bench Front Facing Fold-Up Cushion Rear Seat
- Manual Tilt/Telescoping Steering Column
- Gauges -inc: Speedometer, Odometer, Voltmeter, Oil Pressure, Engine Coolant Temp, Inclinometer, Transmission Fluid Temp, Trip Odometer and Trip Computer
- Power Rear Windows- FordPass Connect 4G Mobile Hotspot Internet Access
- Leather Steering Wheel- Front Cupholder- Rear Cupholder- Compass
- Remote Keyless Entry w/Integrated Key Transmitter, Illuminated Entry and Panic Button
- Proximity Key For Doors And Push Button Start - Garage Door Transmitter
- Cruise Control w/Steering Wheel Controls- HVAC -inc: Underseat Ducts
- Dual Zone Front Automatic Air Conditioning- Illuminated Locking Glove Box
- Full Cloth Headliner
- Interior Trim -inc: Piano Black Instrument Panel Insert, Cabback Insulator and Chrome Interior Accents
- Leather Door Trim Insert- Leather Gear Shifter Material
- Front Heated Leather-Trimmed Bucket Seats -inc: 8-way power adjustable driver including power lumbar, 6-way power adjustable passenger including power lumbar and driver and passenger manual reclining seats
- Day-Night Auto-Dimming Rearview Mirror
- Driver And Passenger Visor Vanity Mirrors w/Driver And Passenger Illumination, Driver And Passenger Auxiliary Mirror
- 3 12V DC Power Outlets
- Full Overhead Console w/Storage, 3 12V DC Power Outlets and 1 120V AC Power Outlet
- Fade-To-Off Interior Lighting- Front And Rear Map Lights
- Full Carpet Floor Covering -inc: Carpet Front And Rear Floor Mats
- Pickup Cargo Box Lights- Smart Device Remote Engine Start- Tracker System
- FOB Controls -inc: Cargo Access
- SYNC 3 -inc: enhanced voice recognition communications and entertainment system, 8" LCD capacitive touchscreen in center stack w/swipe capability, pinch-to-zoom capability included when equipped w/voice-activated touchscreen navigation system, AppLink, 911

- Assist, Apple CarPlay and Android Auto compatibility and 2 smart charging USB ports
- Instrument Panel Bin, Dashboard Storage, Driver / Passenger And Rear Door Bins and 2nd Row Underseat Storage
- Power 1st Row Windows w/Driver 1-Touch Up/Down- Delayed Accessory Power
- Power Door Locks w/Autolock Feature- Trip Computer- Systems Monitor
- Redundant Digital Speedometer- Outside Temp Gauge- Digital/Analog Appearance
- Manual w/Tilt Front Head Restraints and Manual Adjustable Rear Head Restraints
- 2 Seatback Storage Pockets- Rear Center Armrest
- Securilock Anti-Theft Ignition (pats) Engine Immobilizer- Perimeter Alarm
- 3 12V DC Power Outlets and 1 120V AC Power Outlet

Exterior

- Wheels: 18" Machined Alum w/Stealth Gray Pockets- Tires: P265/60R18 A/T BSW
- Regular Box Style- Steel Spare Wheel
- Full-Size Spare Tire Stored Underbody w/Crankdown- Clearcoat Paint
- Body-Colored Rear Step Bumper
- Body-Colored Front Bumper w/Body-Colored Rub Strip/Fascia Accent and 2 Tow Hooks
- Black Side Windows Trim and Black Front Windshield Trim
- Body-Colored Wheel Well Trim- Body-Colored Door Handles
- Body-Colored Power Heated Side Mirrors w/Power Folding and Turn Signal Indicator
- Sliding Rear Window w/Defroster- Variable Intermittent Wipers- Deep Tinted Glass
- Galvanized Steel/Aluminum Panels- Front License Plate Bracket- Chrome Grille
- Tailgate Rear Cargo Access- Tailgate/Rear Door Lock Included w/Power Door Locks
- Cargo Lamp w/High Mount Stop Light- Front Fog Lamps- LED Brakelights
- Headlights-Automatic Highbeams
- Autolamp Auto On/Off Projector Beam Led Low/High Beam Auto High-Beam Daytime Running Lights Preference Setting Headlamps w/Delay-Off
- Perimeter/Approach Lights

Safety

- Driver Seat- Passenger Seat
- Full Folding Bench Front Facing Fold-Up Cushion Rear Seat
- Manual Tilt/Telescoping Steering Column
- Gauges -inc: Speedometer, Odometer, Voltmeter, Oil Pressure, Engine Coolant Temp, Inclinometer, Transmission Fluid Temp, Trip Odometer and Trip Computer
- Power Rear Windows- FordPass Connect 4G Mobile Hotspot Internet Access
- Leather Steering Wheel- Front Cupholder- Rear Cupholder- Compass
- Remote Keyless Entry w/Integrated Key Transmitter, Illuminated Entry and Panic Button
- Proximity Key For Doors And Push Button Start - Garage Door Transmitter
- Cruise Control w/Steering Wheel Controls- HVAC -inc: Underseat Ducts
- Dual Zone Front Automatic Air Conditioning- Illuminated Locking Glove Box
- Full Cloth Headliner
- Interior Trim -inc: Piano Black Instrument Panel Insert, Cabback Insulator and Chrome Interior Accents
- Leather Door Trim Insert- Leather Gear Shifter Material
- Front Heated Leather-Trimmed Bucket Seats -inc: 8-way power adjustable driver including power lumbar, 6-way power adjustable passenger including power lumbar and driver and passenger manual reclining seats
- Day-Night Auto-Dimming Rearview Mirror
- Driver And Passenger Visor Vanity Mirrors w/Driver And Passenger Illumination, Driver And Passenger Auxiliary Mirror
- 3 12V DC Power Outlets
- Full Overhead Console w/Storage, 3 12V DC Power Outlets and 1 120V AC Power Outlet
- Fade-To-Off Interior Lighting- Front And Rear Map Lights
- Full Carpet Floor Covering -inc: Carpet Front And Rear Floor Mats
- Pickup Cargo Box Lights- Smart Device Remote Engine Start- Tracker System
- FOB Controls -inc: Cargo Access
- SYNC 3 -inc: enhanced voice recognition communications and entertainment system, 8" LCD capacitive touchscreen in center stack w/swipe capability, pinch-to-zoom capability included when equipped w/voice-activated touchscreen navigation system, AppLink, 911 Assist, Apple CarPlay and Android Auto compatibility and 2 smart charging USB ports
- Instrument Panel Bin, Dashboard Storage, Driver / Passenger And Rear Door Bins and 2nd Row Underseat Storage
- Power 1st Row Windows w/Driver 1-Touch Up/Down- Delayed Accessory Power
- Power Door Locks w/Autolock Feature- Trip Computer- Systems Monitor
- Redundant Digital Speedometer- Outside Temp Gauge- Digital/Analog Appearance
- Manual w/Tilt Front Head Restraints and Manual Adjustable Rear Head Restraints
- 2 Seatback Storage Pockets- Rear Center Armrest
- Securilock Anti-Theft Ignition (pats) Engine Immobilizer- Perimeter Alarm
- 3 12V DC Power Outlets and 1 120V AC Power Outlet

Mechanical

- Engine: 2.3L EcoBoost -inc: auto start-stop technology
- Transmission: Electronic 10-Speed SelectShift Auto - 3.73 Axle Ratio- GVWR: 6,050 lbs
- 50-State Emissions System- Transmission w/Driver Selectable Mode
- Electronic Transfer Case- Part-Time Four-Wheel Drive- 150 Amp Alternator
- 80-Amp/Hr 800CCA Maintenance-Free Battery w/Run Down Protection
- Towing Equipment -inc: Trailer Sway Control - Trailer Wiring Harness
- 1560# Maximum Payload- Gas-Pressurized Shock Absorbers- Front Anti-Roll Bar
- Electric Power-Assist Speed-Sensing Steering- 18 Gal. Fuel Tank
- Single Stainless Steel Exhaust- Auto Locking Hubs
- Short And Long Arm Front Suspension w/Coil Springs
- Leaf Rear Suspension w/Leaf Springs
- 4-Wheel Disc Brakes w/4-Wheel ABS, Front Vented Discs, Brake Assist and Hill Hold Control

Option Packages

Factory Installed Packages

-
ENGINE: 2.3L ECOBOOST
-inc: auto start-stop technology