

askjorgelopez.com
(866) 773-1396
22702 Tomball Parkway
Tomball, TX 77375

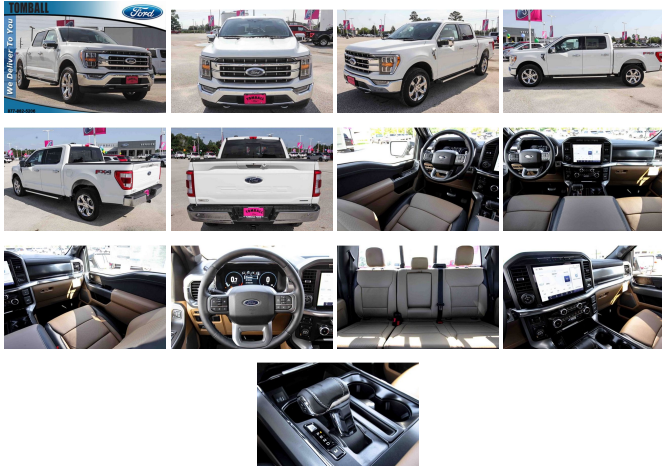
Ask Jorge Lopez

2022 Ford F-150 LARIAT

View this car on our website at askjorgelopez.com/7111097/ebrochure



877-882-5206
22702 Tomball Pkwy
Tomball, TX 77375



Our Price **\$68,345**

Retail Value **\$70,095**

Specifications:

Year: 2022
VIN: 1FTFW1E86NFC13889
Make: Ford
Stock: FC13889
Model/Trim: F-150 LARIAT
Condition: New
Body: Pickup Truck
Exterior: STAR WHITE METALLIC TRICOAT
Engine: ENGINE: 3.5L V6 ECOBOOST
Interior: LEATHER BUCKET SEATS W/CONSOLE
BAJA TAN Leather
Mileage: 3
Drivetrain: 4 Wheel Drive
Economy: City 17 / Highway 23

"Take the worry out of buying with this dependable 2022 Ford F-150. Tire Specific Low Tire Pressure Warning, Side Impact Beams, Safety Canopy System Curtain 1st And 2nd Row Airbags, Reverse Sensing System Rear Parking Sensors, Rear Child Safety Locks. *Fully-Loaded with Additional Options*TRAILER TOW PACKAGE -inc: Towing capability up to TBD lbs, Integrated Trailer Brake Controller, Pro Trailer Backup Assist, LARIAT CHROME APPEARANCE PACKAGE -inc: 2 chrome front tow hooks, Chrome Single-Tip Exhaust, 6" Bright Polished Running Board, Chrome Door & Tailgate Handles w/Body-Color Bezel, Wheels: 18" Chrome-Like PVD, Chrome 2-Bar Grille w/4 Minor Bars, painted silver surround and background mesh, Chrome Skull Caps on Exterior Mirrors,, FX4 OFF-ROAD PACKAGE -inc: Off-Road Tuned Front Shock Absorbers, Skid Plates, fuel tank, transfer case and front differential, Monotube Rear Shocks, Rock Crawl Mode, 4x4 FX4 Off-Road Bodyside Decal, Hill Descent Control, Electronic Locking w/3.31 Axle Ratio, BED UTILITY PACKAGE -inc: BoxLink, 4 premium locking cleats, LED Box Lighting, Tailgate Step w/Tailgate Work Surface, Power Tailgate, STAR WHITE METALLIC TRI-COAT, LARIAT CHROME APPEARANCE PACKAGE -inc: 2 chrome front tow hooks, Chrome Single-Tip Exhaust, 6" Bright Polished Running Board, Chrome Door & Tailgate Handles w/Body-Color Bezel, Wheels: 18" Chrome-Like PVD, Chrome 2-Bar Grille w/4 Minor Bars, painted silver surround and background mesh, Chrome Skull Caps on Exterior Mirrors,, INTERIOR WORK SURFACE, FX4 OFF-ROAD PACKAGE -inc: Off-Road Tuned Front Shock Absorbers, Skid Plates, fuel tank, transfer case and front differential, Monotube Rear Shocks, Rock Crawl Mode, 4x4 FX4 Off-Road Bodyside Decal, Hill Descent Control, Electronic Locking w/3.31 Axle Ratio, FRONT LICENSE PLATE BRACKET -inc: Standard in states requiring 2 license plates, optional to all others, EXTENDED RANGE 36 GALLON FUEL TANK.* Visit Us Today *Test drive this must-see, must-drive, must-own beauty today at Tomball Ford, 22702 Tomball Parkway, Tomball, TX 77375."

2022 Ford F-150 LARIAT

Ask Jorge Lopez - (866) 773-1396 - View this car on our website at askjorgelopez.com/7111097/ebrochure

Our Location :



2022 Ford F-150 LARIAT

Ask Jorge Lopez - (866) 773-1396 - View this car on our website at askjorgelopez.com/7111097/ebrochure

Installed Options

Interior

- Leather-Trimmed 40/20/40 Front Seat -inc: heated and ventilated 10-way power driver and passenger w/power lumbar and memory driver's seat
- Driver Seat- Passenger Seat
- 60-40 Folding Split-Bench Front Facing Fold-Up Cushion Rear Seat
- Manual Tilt/Telescoping Steering Column
- Gauges -inc: Speedometer, Odometer, Voltmeter, Oil Pressure, Engine Coolant Temp, Tachometer, Transmission Fluid Temp, Trip Odometer and Trip Computer
- Power Rear Windows- FordPass Connect 4G Mobile Hotspot Internet Access
- Leather/Metal-Look Steering Wheel- Illuminated Front Cupholder- Rear Cupholder
- Compass
- Remote Keyless Entry w/Integrated Key Transmitter, Illuminated Entry and Panic Button
- Keypad- Proximity Key For Doors And Push Button Start
- Remote Releases -Inc: Keyfob Cargo Access- Cruise Control w/Steering Wheel Controls
- HVAC -inc: Underseat Ducts- Dual Zone Front Automatic Air Conditioning
- Locking Glove Box- Full Cloth Headliner- Urethane Gear Shifter Material
- Interior Trim -inc: Metal-Look Instrument Panel Insert, Cabback Insulator, Metal-Look Door Panel Insert and Chrome/Metal-Look Interior Accents
- Day-Night Auto-Dimming Rearview Mirror
- Driver And Passenger Visor Vanity Mirrors w/Driver And Passenger Illumination
- Mini Overhead Console w/Storage and 1 12V DC Power Outlet
- Fade-To-Off Interior Lighting- Front And Rear Map Lights
- Full Carpet Floor Covering -inc: Carpet Front And Rear Floor Mats
- Pickup Cargo Box Lights- Smart Device Remote Engine Start
- Memory Settings -inc: Door Mirrors and Pedals
- FOB Controls -inc: Cargo Access and Remote Engine Start
- SYNC 4 Connected Navigation Integrated Navigation System w/Voice Activation
- SYNC 4 w/Enhanced Voice Recognition -inc: 12" LCD capacitive touchscreen w/swipe capability, information on demand panel, wireless phone connection, cloud connected, Applink w/App catalog, 911 Assist, Apple CarPlay and Android Auto compatibility, digital owners manual, conversational voice command recognition and connected navigation.

Note: Navigation services require SYNC@4 and FordPass Connect (optional on select vehicles), complimentary connect service and the FordPass app (see FordPass Terms for details), Customer receives a complimentary 90-day trial of navigation services when an eligible vehicle is added to a member's FordPass account, Trial period begins on the new vehicle warranty start date, At the end of the complimentary period, navigation service will terminate, Connected service and features depend on compatible AT&T network availability, Evolving technology/cellular networks/vehicle capability may limit functionality and prevent operation of connected features, FordPass App, compatible w/select smartphone platforms, is available via a download, Message and data rates may apply

- Instrument Panel Bin, Dashboard Storage, Interior Concealed Storage, Driver / Passenger And Rear Door Bins, Locking 1st Row Underseat Storage and 2nd Row Underseat Storage
- Power 1st Row Windows w/Driver And Passenger 1-Touch Up/Down
- Delayed Accessory Power- Power Door Locks w/Autolock Feature
- Power Adjustable Pedals- Outside Temp Gauge- Redundant Digital Speedometer
- Trip Computer- Digital/Analog Appearance- 2 Seatback Storage Pockets
- Manual Adjustable Front Head Restraints and Manual Adjustable Rear Head Restraints
- Seats w/Leatherette Back Material
- Front Center Armrest w/Storage and Rear Center Armrest
- Securilock Anti-Theft Ignition (pats) Engine Immobilizer- Perimeter Alarm
- 1 12V DC Power Outlet- Air Filtration

Exterior

- Wheels: 18" Machined-Aluminum -inc: magnetic painted pockets
- Tires: 275/65R18 BSW A/T- Regular Box Style- Steel Spare Wheel
- Full-Size Spare Tire Stored Underbody w/Crankdown- Clearcoat Paint
- Chrome Rear Step Bumper
- Chrome Front Bumper w/Body-Colored Rub Strip/Fascia Accent and 2 Tow Hooks
- Black Side Windows Trim- Body-Colored Door Handles
- Body-Colored Power Heated Side Mirrors w/Driver Auto Dimming, Power Folding and Turn Signal Indicator
- Power Rear Window w/Defroster- Variable Intermittent Wipers- Deep Tinted Glass
- Aluminum Panels- Black Grille w/Chrome Accents- Tailgate Rear Cargo Access
- Tailgate/Rear Door Lock Included w/Power Door Locks
- Cargo Lamp w/High Mount Stop Light- Front Fog Lamps- Perimeter/Approach Lights
- Headlights-Automatic Highbeams
- Ford Co-Pilot360 - Autolamp Auto On/Off Aero-Composite Led Low/High Beam Auto High-Beam Daytime Running Lights Preference Setting Headlamps w/Delay-Off
- LED Brake Lights

Safety

- Leather-Trimmed 40/20/40 Front Seat -inc: heated and ventilated 10-way power driver and passenger w/power lumbar and memory driver's seat
- Driver Seat- Passenger Seat
- 60-40 Folding Split-Bench Front Facing Fold-Up Cushion Rear Seat
- Manual Tilt/Telescoping Steering Column
- Gauges -inc: Speedometer, Odometer, Voltmeter, Oil Pressure, Engine Coolant Temp, Tachometer, Transmission Fluid Temp, Trip Odometer and Trip Computer
- Power Rear Windows- FordPass Connect 4G Mobile Hotspot Internet Access
- Leather/Metal-Look Steering Wheel- Illuminated Front Cupholder- Rear Cupholder
- Compass
- Remote Keyless Entry w/Integrated Key Transmitter, Illuminated Entry and Panic Button
- Keypad- Proximity Key For Doors And Push Button Start
- Remote Releases -Inc: Keyfob Cargo Access- Cruise Control w/Steering Wheel Controls
- HVAC -inc: Underseat Ducts- Dual Zone Front Automatic Air Conditioning
- Locking Glove Box- Full Cloth Headliner- Urethane Gear Shifter Material
- Interior Trim -inc: Metal-Look Instrument Panel Insert, Cabbage Insulator, Metal-Look Door Panel Insert and Chrome/Metal-Look Interior Accents
- Day-Night Auto-Dimming Rearview Mirror
- Driver And Passenger Visor Vanity Mirrors w/Driver And Passenger Illumination
- Mini Overhead Console w/Storage and 1 12V DC Power Outlet
- Fade-To-Off Interior Lighting- Front And Rear Map Lights
- Full Carpet Floor Covering -inc: Carpet Front And Rear Floor Mats
- Pickup Cargo Box Lights- Smart Device Remote Engine Start
- Memory Settings -inc: Door Mirrors and Pedals
- FOB Controls -inc: Cargo Access and Remote Engine Start
- SYNC 4 Connected Navigation Integrated Navigation System w/Voice Activation
- SYNC 4 w/Enhanced Voice Recognition -inc: 12" LCD capacitive touchscreen w/swipe capability, information on demand panel, wireless phone connection, cloud connected, AppLink w/App catalog, 911 Assist, Apple CarPlay and Android Auto compatibility, digital owners manual, conversational voice command recognition and connected navigation, Note: Navigation services require SYNC@4 and FordPass Connect (optional on select vehicles), complimentary connect service and the FordPass app (see FordPass Terms for details), Customer receives a complimentary 90-day trial of navigation services when an eligible vehicle is added to a member's FordPass account, Trial period begins on the new vehicle warranty start date, At the end of the complimentary period, navigation service will

- terminate, Connected service and features depend on compatible AT&T network availability, Evolving technology/cellular networks/vehicle capability may limit functionality and prevent operation of connected features, FordPass App, compatible w/select smartphone platforms, is available via a download, Message and data rates may apply
- Instrument Panel Bin, Dashboard Storage, Interior Concealed Storage, Driver / Passenger And Rear Door Bins, Locking 1st Row Underseat Storage and 2nd Row Underseat Storage
 - Power 1st Row Windows w/Driver And Passenger 1-Touch Up/Down
 - Delayed Accessory Power- Power Door Locks w/Autolock Feature
 - Power Adjustable Pedals- Outside Temp Gauge- Redundant Digital Speedometer
 - Trip Computer- Digital/Analog Appearance- 2 Seatback Storage Pockets
 - Manual Adjustable Front Head Restraints and Manual Adjustable Rear Head Restraints
 - Seats w/Leatherette Back Material
 - Front Center Armrest w/Storage and Rear Center Armrest
 - Securilock Anti-Theft Ignition (pats) Engine Immobilizer- Perimeter Alarm
 - 1 12V DC Power Outlet- Air Filtration

Mechanical

- Engine: 2.7L V6 EcoBoost w/o 52X-inc: auto start-stop technology
- Transmission: Electronic 10-Speed Automatic -inc: selectable drive modes: normal, ECO, sport, tow/haul, slippery, deep snow/sand and mud/rut
- 3.55 Axle Ratio- GVWR: 6,600 lbs Payload Package- Electronic Transfer Case
- Automatic Full-Time Four-Wheel Drive
- 70-Amp/Hr 610CCA Maintenance-Free Battery w/Run Down Protection
- 200 Amp Alternator- Towing Equipment -inc: Trailer Sway Control
- Class IV Trailer Hitch Receiver -inc: towing capability up to TBD lbs, on 3.3L V6 PFDI engine (99B) and 2.7L EcoBoost engine (99P) or up to TBD lbs, on 3.5L EcoBoost engine (998) and 5.0L V8 engine (995), 7/4-pin connector, class IV trailer hitch receiver, smart trailer tow connector (BLIS w/trailer tow coverage where BLIS is available) Ordering the Trailer Tow Package does not include Integrated Brake Controller (67T). Integrated Brake Controller (67T) is a standalone option and must be ordered separately.
- 1760# Maximum Payload- HD Shock Absorbers- Front Anti-Roll Bar
- Electric Power-Assist Speed-Sensing Steering- Single Stainless Steel Exhaust
- 26 Gal. Fuel Tank- Auto Locking Hubs
- Double Wishbone Front Suspension w/Coil Springs
- Leaf Rear Suspension w/Leaf Springs
- 4-Wheel Disc Brakes w/4-Wheel ABS, Front And Rear Vented Discs, Brake Assist, Hill Hold Control and Electric Parking Brake

Option Packages

Factory Installed Packages

-	
ENGINE: 3.5L V6 ECOBOOST	
-inc: auto start-stop technology, GVWR: 7,050 lbs Payload Package, 3.31 Axle Ratio	\$1,540
-	
Option Packages Total	\$1,540

Ask Jorge Lopez
askjorgelopez.com
 (866) 773-1396

22702 Tomball Parkway
 Tomball, TX 77375

© 2022 AutoRevo - All rights reserved. - Powered by AutoRevo