

2020 Nissan NV2500HD SV

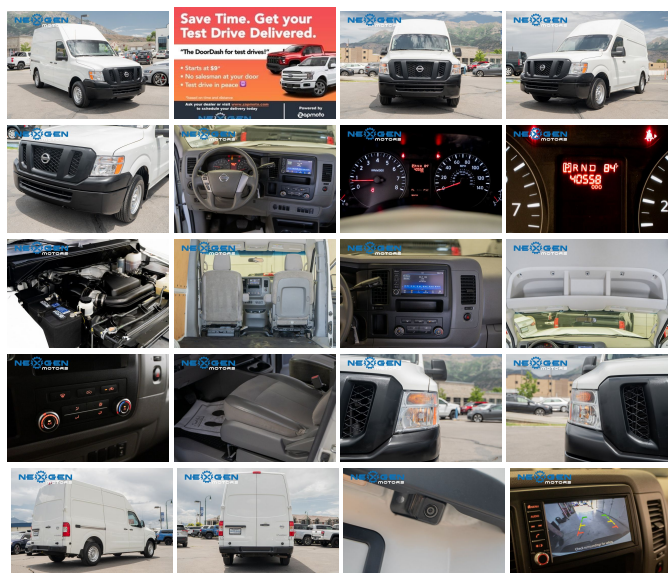
View this car on our website at nexgenmotorsutah.com/7110957/ebrochure



Our Price **\$31,500**

Specifications:

Year:	2020
VIN:	1N6BF0LYXLN804707
Make:	Nissan
Stock:	804707
Model/Trim:	NV2500HD SV
Condition:	Pre-Owned
Body:	Minivan/Van
Exterior:	Glacier White
Engine:	Engine: 4.0L DOHC 24-Valve V6
Interior:	Grey Cloth
Mileage:	40,549
Drivetrain:	Rear Wheel Drive



2020 Nissan NV2500HD SV

Nexgen Motors - 801-874-3747 - View this car on our website at nexgenmotorsutah.com/7110957/ebrochure

Our Location :



2020 Nissan NV2500HD SV

Nexgen Motors - 801-874-3747 - View this car on our website at nexgenmotorsutah.com/7110957/ebrochure

Installed Options

Interior

- Front Bucket Seats -inc: driver's and passenger's 4-way manual seats and fold-down passenger seat w/seat back tray table
- Driver Seat- Passenger Seat- Manual Tilt Steering Column
- Gauges -inc: Speedometer, Odometer, Voltmeter, Oil Pressure, Engine Coolant Temp, Tachometer, Transmission Fluid Temp, Trip Odometer and Trip Computer
- Front Cupholder- 2 12V DC Power Outlets
- Remote Keyless Entry w/Illuminated Entry and Panic Button
- Cruise Control w/Steering Wheel Controls- Manual Air Conditioning- Glove Box
- Driver Foot Rest- Interior Trim -inc: Metal-Look Interior Accents - Front Cloth Headliner
- Urethane Gear Shifter Material
- Premium Cloth Seat Trim -inc: water-repellant feature w/vinyl wear bolsters
- Partial Floor Console w/Locking Storage, Full Overhead Console w/Storage, 2 12V DC Power Outlets and 2 120V AC Power Outlets
- Front Map Lights- Fade-To-Off Interior Lighting- Front Only Vinyl/Rubber Floor Covering
- Vinyl/Rubber Mat- Cargo Space Lights
- Instrument Panel Bin, Driver And Passenger Door Bins and 1st Row Underseat Storage
- Power 1st Row Windows w/Driver 1-Touch Up/Down- Delayed Accessory Power
- Power Door Locks w/Autolock Feature- Systems Monitor- Trip Computer
- Outside Temp Gauge- Analog Appearance- Manual Adjustable Front Head Restraints
- Front Center Armrest- 2 12V DC Power Outlets and 2 120V AC Power Outlets

Exterior

- Wheels: 17" Silver Steel- Tires: LT245/70/R17 AS
- Wheels w/Silver Accents w/Hub Covers- Steel Spare Wheel
- Full-Size Spare Tire Stored Underbody w/Crankdown- Clearcoat Paint
- Black Front Bumper- Black Rear Step Bumper
- Black Side Windows Trim and Black Front Windshield Trim - Black Door Handles
- Black Power Side Mirrors w/Convex Spotter and Manual Folding- Light Tinted Glass
- Grand Canyon Variable Intermittent Wipers- Fully Customized Steel Bumpers- Black Cilia

- Speed Sensitive variable intermittent wipers- Fully Galvanized Steel Panels- Black Grille
- Sliding Rear Passenger Side Door- Split Swing-Out Rear Cargo Access
- Tailgate/Rear Door Lock Included w/Power Door Locks
- Aero-Composite Halogen Daytime Running Headlamps

Safety

- Front Bucket Seats -inc: driver's and passenger's 4-way manual seats and fold-down passenger seat w/seat back tray table
- Driver Seat- Passenger Seat- Manual Tilt Steering Column
- Gauges -inc: Speedometer, Odometer, Voltmeter, Oil Pressure, Engine Coolant Temp, Tachometer, Transmission Fluid Temp, Trip Odometer and Trip Computer
- Front Cupholder- 2 12V DC Power Outlets
- Remote Keyless Entry w/Illuminated Entry and Panic Button
- Cruise Control w/Steering Wheel Controls- Manual Air Conditioning- Glove Box
- Driver Foot Rest- Interior Trim -inc: Metal-Look Interior Accents - Front Cloth Headliner
- Urethane Gear Shifter Material
- Premium Cloth Seat Trim -inc: water-repellant feature w/vinyl wear bolsters
- Partial Floor Console w/Locking Storage, Full Overhead Console w/Storage, 2 12V DC Power Outlets and 2 120V AC Power Outlets
- Front Map Lights- Fade-To-Off Interior Lighting- Front Only Vinyl/Rubber Floor Covering
- Vinyl/Rubber Mat- Cargo Space Lights
- Instrument Panel Bin, Driver And Passenger Door Bins and 1st Row Underseat Storage
- Power 1st Row Windows w/Driver 1-Touch Up/Down- Delayed Accessory Power
- Power Door Locks w/Autolock Feature- Systems Monitor- Trip Computer
- Outside Temp Gauge- Analog Appearance- Manual Adjustable Front Head Restraints
- Front Center Armrest- 2 12V DC Power Outlets and 2 120V AC Power Outlets

Mechanical

- Engine: 4.0L DOHC 24-Valve V6- Transmission: 5-Speed Automatic- 3.36 Axle Ratio
- GVWR: 9,100 lbs
- Transmission w/Driver Selectable Mode, Sequential Shift Control and Oil Cooler
- Rear-Wheel Drive- Engine Oil Cooler
- 70-Amp/Hr 650CCA Maintenance-Free Battery w/Run Down Protection
- 130 Amp Alternator- 2980# Maximum Payload- Front And Rear Anti-Roll Bars
- HD Shock Absorbers- Hydraulic Power-Assist Speed-Sensing Steering
- 28 Gal. Fuel Tank- Single Stainless Steel Exhaust
- Double Wishbone Front Suspension w/Coil Springs
- Leaf Rear Suspension w/Leaf Springs
- 4-Wheel Disc Brakes w/4-Wheel ABS, Front And Rear Vented Discs and Brake Assist
- Brake Actuated Limited Slip Differential

Nexgen Motors

nexgenmotorsutah.com

801-874-3747

986 N State St.

Orem, UT 84057

© 2023 AutoRevo - All rights reserved. - Powered by AutoRevo