

# 2018 Subaru Forester Premium

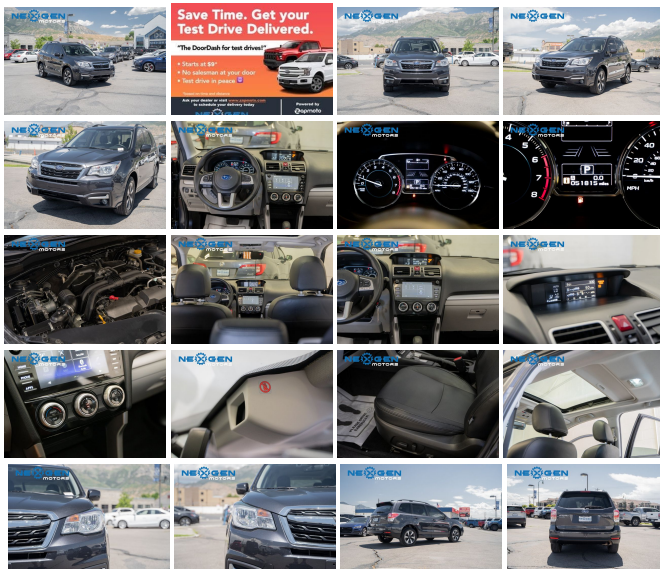
View this car on our website at [nexgenmotorsutah.com/7109271/ebrochure](http://nexgenmotorsutah.com/7109271/ebrochure)



Our Price **\$23,000**

## Specifications:

<b>Year:</b>	2018
<b>VIN:</b>	JF2SJAGC3JH577444
<b>Make:</b>	Subaru
<b>Stock:</b>	272417A
<b>Model/Trim:</b>	Forester Premium
<b>Condition:</b>	Pre-Owned
<b>Body:</b>	SUV
<b>Exterior:</b>	Dark Gray Metallic
<b>Engine:</b>	Engine: 2.5L 4 Cyl DOHC 16V w/VVT -inc: Active Valve Control System (AVCS) variable valve timing
<b>Interior:</b>	gray Cloth
<b>Mileage:</b>	51,795
<b>Drivetrain:</b>	All Wheel Drive
<b>Economy:</b>	City 26 / Highway 32



2018 Subaru Forester Premium

Nexgen Motors - 801-874-3747 - View this car on our website at [nexgenmotorsutah.com/7109271/ebrochure](http://nexgenmotorsutah.com/7109271/ebrochure)

## Our Location :



2018 Subaru Forester Premium

Nexgen Motors - 801-874-3747 - View this car on our website at [nexgenmotorsutah.com/7109271/ebrochure](http://nexgenmotorsutah.com/7109271/ebrochure)

## Installed Options

### Interior

- Front Bucket Seats -inc: 10-way power driver's seat w/power lumbar support, height and tilt adjustable front head restraints and passenger front seat back pocket
- 8-Way Driver Seat- 4-Way Passenger Seat -inc: Manual Recline and Fore/Aft Movement
- Cruise Control w/Steering Wheel Controls- HVAC -inc: Underseat Ducts
- Automatic Air Conditioning- Locking Glove Box- Driver Foot Rest
- Interior Trim -inc: Metal-Look Instrument Panel Insert, Metal-Look Door Panel Insert, Metal-Look Console Insert and Metal-Look Interior Accents
- Full Cloth Headliner- Cloth Door Trim Insert- Urethane Gear Shifter Material
- Cloth Upholstery- Day-Night Rearview Mirror
- Driver And Passenger Visor Vanity Mirrors w/Driver And Passenger Illumination, Driver And Passenger Auxiliary Mirror
- Full Floor Console w/Covered Storage, Mini Overhead Console w/Storage and 3 12V DC Power Outlets
- Front Map Lights- Fade-To-Off Interior Lighting
- Full Carpet Floor Covering -inc: Carpet Front And Rear Floor Mats- Carpet Floor Trim
- Cargo Area Concealed Storage- Cargo Space Lights- FOB Controls -inc: Cargo Access
- Tracker System- Instrument Panel Bin, Driver / Passenger And Rear Door Bins
- Power Door Locks- Power 1st Row Windows w/Driver And Passenger 1-Touch Up/Down
- Systems Monitor- Trip Computer- Outside Temp Gauge- Digital/Analog Appearance
- Seats w/Cloth Back Material- Manual Adjustable Rear Head Restraints
- Rear Center Armrest- Perimeter Alarm
- 60-40 Folding Bench Front Facing Manual Reclining Fold Forward Seatback Rear Seat
- Manual Tilt/Telescoping Steering Column
- Gauges -inc: Speedometer, Odometer, Tachometer, Trip Odometer and Trip Computer
- Power Rear Windows and Fixed 3rd Row Windows- Front Cupholder- Rear Cupholder
- Valet Function
- Remote Keyless Entry w/Integrated Key Transmitter, 2 Door Curb/Courtesy, Illuminated Entry, Illuminated Ignition Switch and Panic Button
- Remote Releases -Inc: Mechanical Fuel- Engine Immobilizer- 3 12V DC Power Outlets

- Air Filtration

## Exterior

- Black Side Windows Trim and Black Front Windshield Trim - Body-Colored Door Handles
- Body-Colored Power Side Mirrors w/Manual Folding
- Fixed Rear Window w/Fixed Interval Wiper and Defroster- Variable Intermittent Wipers
- Deep Tinted Glass- Galvanized Steel/Aluminum Panels- Grille w/Chrome Bar
- Lip Spoiler- Liftgate Rear Cargo Access
- Tailgate/Rear Door Lock Included w/Power Door Locks- Roof Rack Rails Only
- Auto Off Aero-Composite Halogen Daytime Running Headlamps- LED Brake Lights
- Black Bodyside Cladding- Body-Colored Rear Bumper w/Black Rub Strip/Fascia Accent
- Body-Colored Front Bumper
- Express Open/Close Sliding Glass 1st And 2nd Row Sunroof w/Power Sunshade
- Clearcoat Paint- Compact Spare Tire Mounted Inside Under Cargo- Steel Spare Wheel
- Tires: P225/60R17 98H All-Season
- Wheels: 17" x 7.0J Black Machine Finish Alloy -inc: Aluminum

## Safety

- Front Bucket Seats -inc: 10-way power driver's seat w/power lumbar support, height and tilt adjustable front head restraints and passenger front seat back pocket
- 8-Way Driver Seat- 4-Way Passenger Seat -inc: Manual Recline and Fore/Aft Movement
- Cruise Control w/Steering Wheel Controls- HVAC -inc: Underseat Ducts
- Automatic Air Conditioning- Locking Glove Box- Driver Foot Rest
- Interior Trim -inc: Metal-Look Instrument Panel Insert, Metal-Look Door Panel Insert, Metal-Look Console Insert and Metal-Look Interior Accents
- Full Cloth Headliner- Cloth Door Trim Insert- Urethane Gear Shifter Material
- Cloth Upholstery- Day-Night Rearview Mirror
- Driver And Passenger Visor Vanity Mirrors w/Driver And Passenger Illumination, Driver And Passenger Auxiliary Mirror
- Full Floor Console w/Covered Storage, Mini Overhead Console w/Storage and 3 12V DC Power Outlets
- Front Map Lights- Fade-To-Off Interior Lighting
- Full Carpet Floor Covering -inc: Carpet Front And Rear Floor Mats - Carpet Floor Trim
- Cargo Area Concealed Storage- Cargo Space Lights- FOB Controls -inc: Cargo Access
- Tracker System- Instrument Panel Bin, Driver / Passenger And Rear Door Bins
- Power Door Locks- Power 1st Row Windows w/Driver And Passenger 1-Touch Up/Down
- Systems Monitor- Trip Computer- Outside Temp Gauge- Digital/Analog Appearance
- Seats w/Cloth Back Material- Manual Adjustable Rear Head Restraints
- Rear Center Armrest- Perimeter Alarm
- 60-40 Folding Bench Front Facing Manual Reclining Fold Forward Seatback Rear Seat
- Manual Tilt/Telescoping Steering Column
- Gauges -inc: Speedometer, Odometer, Tachometer, Trip Odometer and Trip Computer
- Power Rear Windows and Fixed 3rd Row Windows- Front Cupholder- Rear Cupholder
- Valet Function
- Remote Keyless Entry w/Integrated Key Transmitter, 2 Door Curb/Courtesy, Illuminated Entry, Illuminated Ignition Switch and Panic Button
- Remote Releases -Inc: Mechanical Fuel- Engine Immobilizer- 3 12V DC Power Outlets
- Air Filtration

## Mechanical

- 4-Wheel Disc Brakes w/4-Wheel ABS, Front Vented Discs, Brake Assist and Hill Hold Control
- Double Wishbone Rear Suspension w/Coil Springs
- Strut Front Suspension w/Coil Springs- Permanent Locking Hubs
- Single Stainless Steel Exhaust- 15.9 Gal. Fuel Tank- Electric Power-Assist Steering
- Front And Rear Anti-Roll Bars- Gas-Pressurized Shock Absorbers
- Battery w/Run Down Protection- Full-Time All-Wheel GVWR: 4,480 lbs- 3.70 Axle Ratio
- Transmission: Lineartronic CVT -inc: low shift mode, X-mode and hill descent control (HDC)
- Engine: 2.5L 4 Cyl DOHC 16V w/VVT -inc: Active Valve Control System (AVCS) variable valve timing

