

2003 Saturn VUE 5 SPEED MANUAL

View this car on our website at starfire-auto.com/7106855/ebrochure

MORE PICS/DETAILS: STARFIRE-AUTO.COM BY APPT ONLY NO WALK INS!

5 SPEED MT!



CARFAX ADVANTAGE DEALER

PAY WITH CRYPTO
We accept cryptocurrency payments.



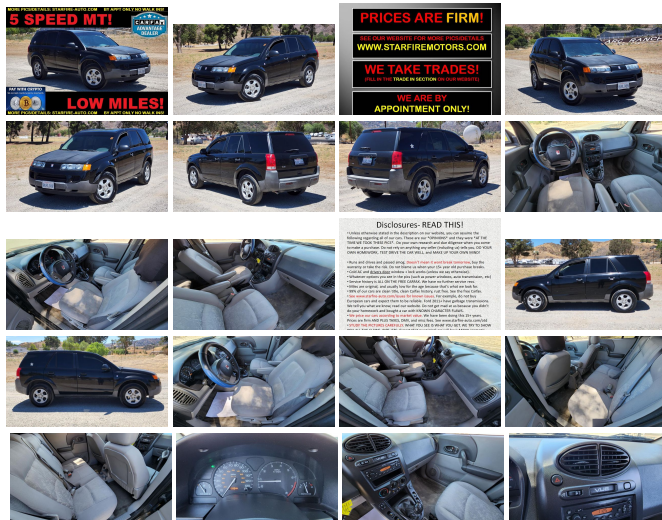
LOW MILES!

MORE PICS/DETAILS: STARFIRE-AUTO.COM BY APPT ONLY NO WALK INS!

Our Price **\$3,990**

Specifications:

Year: 2003
VIN: 5GZCZ23D23S832069
Make: Saturn
Stock: DF6202781S
Model/Trim: VUE 5 SPEED MANUAL
Condition: Pre-Owned
Body: SUV
Exterior: Black
Engine: 2.2L (134) DOHC SEFI 16-VALVE L4 ALUMINUM ENGINE
Interior: Grey Cloth
Transmission: 5-SPEED MANUAL TRANSMISSION W/4TH & 5TH GEAR OD
Mileage: 137,244
Drivetrain: Front Wheel Drive
Economy: City 23 / Highway 28



PLEASE READ THIS SECTION!

- A SIMPLE 5 SPEED MANUAL 4 CYLINDER SUV
- BE AWARE THAT THESE HAVE RATHER CLUNKY FRONT SUSPENSIONS. YOU CAN REPLACE THE SWAY BAR CONTROL LINKS (ABOUT \$50), BUT THEY WILL JUST DO IT AGAIN SOON. ITS NOT DANGEROUS, JUST ANNOYING OVER BUMPS. ITS...CLUNKY...
- A LIGHT WEIGHT GAS SAVING SUV
- THESE CAN BE FLAT TOWED BEHIND AN RV
- FUEL EFFICIENT CHAIN DRIVEN 4 CYLINDER ENGINE
- POWER WINDOWS AND LOCKS
- ADD ~15% TO THE PRICE TO GET THE

ADD 15% TO THE PRICE TO GET THE
TOTAL AFTER TAXES/DMV FEES

**EVERYTHING WE KNOW IS ON
OUR FAQ PAGE:
WWW.STARFIRE-
AUTO.COM/FAQ**

**WE ARE BY APPOINTMENT
ONLY.**

**OUR PRICES ARE NOT
NEGOTIABLE!**

2003 Saturn VUE 5 SPEED MANUAL

Starfire Auto Inc - 661-513-4959 - View this car on our website at starfire-auto.com/7106855/ebrochure

Vehicle History Report : as Of 04/16/2024

CARFAX

Snapshot

2003 SATURN VUE



No accidents or damage reported to
CARFAX



2 Service history
records



2 Previous owners



Personal
vehicle



Last owned in
California



137,250 Last reported odometer
reading



FREE CARFAX Report

See the full CARFAX Report for additional information

*carfax Snapshot is a reflection of available information on the date the report was pulled. carfax is constantly being updated with new information and is subject to change at any time.

Our Location :



Installed Options

Interior

- 70/30 split folding rear seatbacks - Air conditioning w/dust & pollen filter
- Anti-lockout feature- Carpeted cargo area w/light & liftgate loading lamps
- Center console w/cup holders, storage bin & front/rear 12-volt pwr outlets
- Cloth seating surfaces- Cut-pile passenger compartment area carpet
- Day/night rearview mirror- Door entry lamps- Dual visor vanity mirrors
- ETR AM/FM stereo w/4-speakers- Electric rear window defogger w/timer
- Engine immobilizing anti-theft system
- Fold-flat front passenger seatback w/scuff resistant back
- Heat/ventilation system w/4-speed fan, windshield defroster & illuminated heater/defroster controls
- Height adjustable drivers seat- Height adjustable steering wheel
- Instrument panel gauges-inc: 130 MPH speedometer w/digital trip odometer, 8000 RPM tachometer, oil-life monitor, coolant temp, fuel level gauge
- Laser etched VIN plate- Rear cargo organizer
- Reclining front bucket seats w/2-way adjustable head restraints & inboard fold-down armrests
- Remote hood/tailgate release- Theft deterrent steering column lock
- Two position reclining rear seats
- Warning chimes: headlamps-on, key-in-ignition, driver safety belt, door open, battery, oil pressure, check engine
- Warning lights-inc: low fuel, low brake fluid, low washer fluid, airbags, driver safety belt, liftgate ajar, battery, oil pressure, check engine

Exterior

- Daytime running lamps- 4-way hazard warning flashers- Back-up lamps
- Cargo area privacy glass- Center high mounted stop lamp
- Exterior break-away manual mirrors- Galvanized steel hood, roof & liftgate
- Halogen headlamps w/flash-to-pass feature- Integrated roof rails
- Intermittent windshield wipers- One-piece rear liftgate
- Polymer front fenders, door panels, rear quarter panels & bumper facias
- Rear window intermittent wiper w/washer- Side marker lamps & reflectors- Solar glass

Safety

- 70/30 split folding rear seatbacks - Air conditioning w/dust & pollen filter
- Anti-lockout feature- Carpeted cargo area w/light & liftgate loading lamps
- Center console w/cup holders, storage bin & front/rear 12-volt pwr outlets
- Cloth seating surfaces- Cut-pile passenger compartment area carpet
- Day/night rearview mirror- Door entry lamps- Dual visor vanity mirrors
- ETR AM/FM stereo w/4-speakers- Electric rear window defogger w/timer
- Engine immobilizing anti-theft system
- Fold-flat front passenger seatback w/scuff resistant back
- Heat/ventilation system w/4-speed fan, windshield defroster & illuminated heater/defroster controls
- Height adjustable drivers seat- Height adjustable steering wheel
- Instrument panel gauges-inc: 130 MPH speedometer w/digital trip odometer, 8000 RPM tachometer, oil-life monitor, coolant temp, fuel level gauge
- Laser etched VIN plate- Rear cargo organizer
- Reclining front bucket seats w/2-way adjustable head restraints & inboard fold-down armrests
- Remote hood/tailgate release- Theft deterrent steering column lock
- Two position reclining rear seats
- Warning chimes: headlamps-on, key-in-ignition, driver safety belt, door open, battery, oil pressure, check engine
- Warning lights-inc: low fuel, low brake fluid, low washer fluid, airbags, driver safety belt, liftgate ajar, battery, oil pressure, check engine

Mechanical

- P215/70SR16 all-season touring SBR BSW Bridgestone Dueler H/T tires w/built-in wear indicators
- 15.5 gallon fuel tank- 16" x 4" spare steel wheel- 16" x 6.5" steel wheels w/wheel covers
- 2.2L (134) DOHC SEFI 16-valve L4 aluminum engine - 4.41 axle ratio
- 5-speed manual transmission w/4th & 5th gear OD
- Electric pwr-assisted rack & pinion steering- Front wheel drive
- Full stainless steel exhaust system

Option Packages

Factory Installed Packages

2.2L (134) DOHC SEFI 16-VALVE L4 ALUMINUM ENGINE

5-SPEED MANUAL TRANSMISSION W/4TH & 5TH GEAR OD

FULL CLOTH SEAT UPHOLSTERY

- 1.0L stainless steel exhaust system
- Galvanized steel spaceframe w/front/rear vibration isolating subframe
- Independent front strut-type suspension w/coil springs & stabilizer bar
- Independent rear three lateral link suspension w/coil springs & stabilizer bar
- Maintenance-free battery Pwr-assisted ventilated front disc/rear drum brakes
- T155/90D16 Bridgestone compact spare tire

Prices shown exclude government fees and taxes, any finance charges, any dealer document preparation charge, and any emission testing charge. All vehicles are subject to prior sale. Prices shown are for PAYMENT IN FULL VIA CERTIFIED FUNDS. PAPER CASH HAS A 1% SURCHARGE ADDED TO THE PRICE, ALL CREDIT CARD/DEBIT CARD PURCHASES ARE SUBJECT TO LIMITS AND HAVE A 3.5% SURCHARGE ADDED TO THE PRICE. ZELLE OR CERTIFIED CHECKS HAVE NO FEE AND ARE STRONGLY ENCOURAGED. ALL INFORMATION PROVIDED ON OUR WEBSITE IS OUR NON-BINDING OPINION AT THE TIME THE VEHICLE WAS PUT UP FOR SALE. STARFIRE AUTO IS NOT RESPONSIBLE FOR THE VALIDITY OF ANY OF THESE OPINIONS, THE BUYER IS RESPONSIBLE FOR THEIR OWN INSPECTION AND TO DRAW THEIR OWN CONCLUSIONS FOR THE CONDITION OF THE VEHICLE AT THE TIME OF PURCHASE

Starfire Auto Inc

starfire-auto.com

661-513-4959

29753 Bouquet Canyon Rd

Santa Clarita, CA 91390

© 2024 AutoRevo - All rights reserved. - Powered by AutoRevo